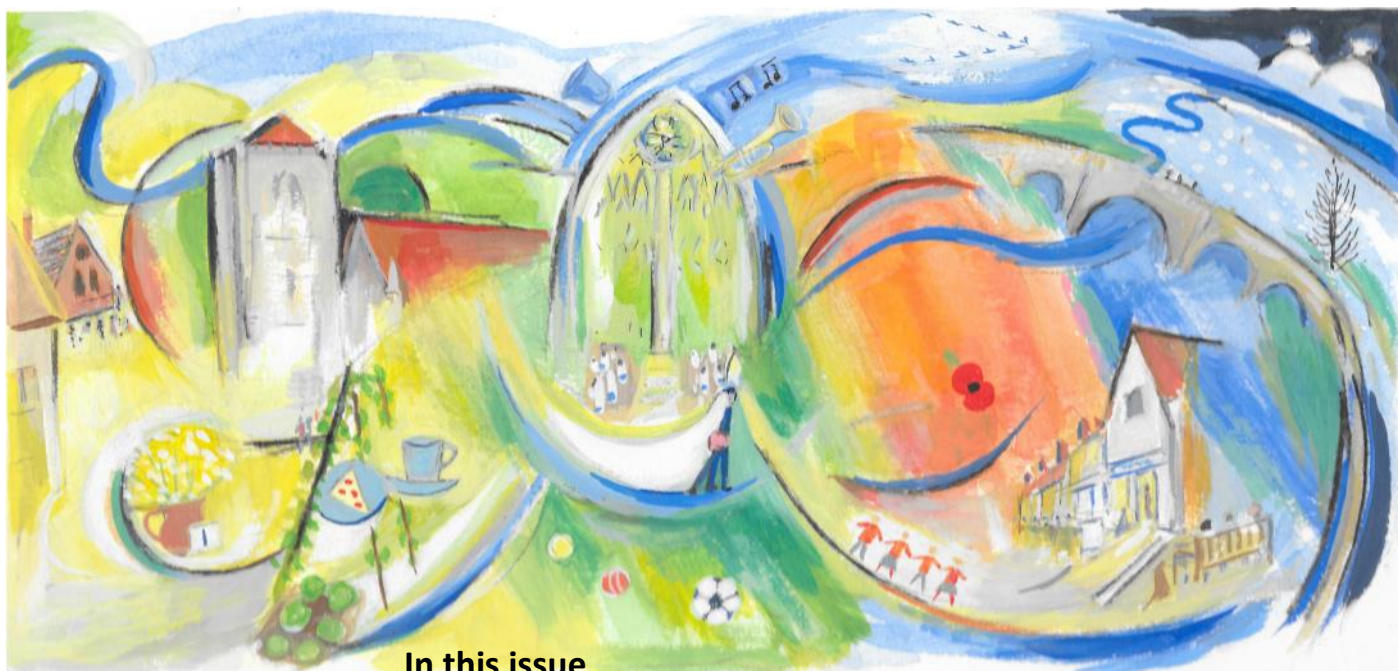


Dorchester News

Free to every home in the parish

May 2021





In this issue

Dorchester Abbey

Farewell	3
...and a Job Opportunity	3
Services	3
Talking Point	3
Cross erected in Cloister Garden	4
VaccinAid	4
Dorchester Abbey Museum News	5

Clubs, Societies and Sports

DADS	5
Hempcroft Allotments	5
Warborough and Shillingford WI	7
Royal British Legion	9
Tennis Club	10

Village news/articles

Henge 21	5
Attack by dog	7
Bus services from Dorchester	13, 30
Sights and Seasons in DoT	14
A Spring Village	16
DoT Open Gardens	18
DoT Safari Supper	18
Ecohydrology—what is it?	19

Art Music and Entertainment

Art Weeks	9
Crossword No 16	21
Need a good read? (Book reviews)	21

Community and Charities

Wallingford Food Bank	4
Footsteps	22
Hedgehog Awareness Week	22

Tributes

John Bridgman	11
Roy Whiting	11

Local and national government

From your Parish Council Chairman	23
Parish Council Notices	23
From your District Councillor	25
Better Broadband for Oxfordshire	27

Schools and education

St Birinus School	7
-------------------	---

Wallingford

Wallingford Garden Club	29
Wallingford Museum News	29
Wallingford Historical Society	29

Advertising

Advertising in Dorchester News	7
Index of advertisers	31

Cover picture: The buttercups on Wittenham Clumps look down on the Thames.

Photo by Fabiola Pinheiro

Deadline for June Dorchester News



email:

dorchesternews@dorchesteronthames.co.uk

DoT view

Remarkably there was a good covering of snow on the ground this morning, which no one appears to have predicted, but the sun has been out and now it has all gone.

A metaphor perhaps for emerging from covid restrictions during the coming two months, but only if we, like the sun, behave as we should at the right moments

If all goes well we shall be able to meet inside again during May, and not just in our homes but in public houses, hotels and restaurants. How we are all looking forward to that and to supporting once again the Fleur, the George and The White Hart; all essential parts of what makes this village live.

During May it is likely that Church Services will expand, so watch the websites for information on that, and there will be Art Weeks and activities returning to the Village Hall—again watch the websites for news of that.

During the lockdowns of the last year, many of us have been reading more books than previously. I am delighted to be able to add a book review section in Dorchester News, courtesy of Karen of Wallingford Bookshop, now re-opened and to which I am very happy to give a plug. Note that Karen is happy to deliver books to Dorchester residents. The benefits of Amazon whilst supporting a local business!

Ian Brace

Editorial Team

Ian Brace, Gillian Johnson

Distribution Co-ordinator

Maurice Day

Printed by

Artisan Print Solutions

My dear friends

I have been moved and encouraged by your good wishes for my Sabbatical and am writing this short message days before it starts. In our clergy letter my new colleague Paul Wignall writes of the creativity that has emerged in communities during Lockdown – that has certainly been true here in Dorchester with all kinds of individual achievements and the wonderful gathered creativity marked by ‘Spoonville’ and the Easter Trail. There is much to regret about the past year but much to celebrate and much on which to build in our own community and elsewhere. God Bless, Rev Sue

Here’s the first verse of my favourite Easter hymn (written by Michael Forster and sung to the Battle Hymn of the Republic):

*From the very depths of darkness springs a bright and living light;
out of falsehood and deceit a greater truth is brought to sight;
in the halls of death, defiant, life is dancing with delight!
The Lord is risen indeed!*

Of course it’s been a tough twelve months, and the hard times aren’t really over yet. Many people have been in difficult places, a lot are still there.

There’s been denial and confusion, there’s been amazing patience, skill and a great many people have had to work up to and beyond exhaustion. Dark times indeed. But shot through with light as families and strangers, friends and neighbours, expected and unexpected, have stepped forward and made a difference.

One thing that’s struck me is just how creative individuals and communities have been, as though lockdown has unlocked imagination and social distance has revealed our common existence. One day we must find a way of saying thank you to the unsung heroes and the silent heroines, who weren’t looking to make a fast buck or be the object of praise; they simply got on and made a difference.

So I’m heartened by the creative imagination of so many. But I shouldn’t really be surprised. It’s how people are when they are given a chance to be their best. It’s how human society works. It’s how the world works. It’s how (let me say it) God works: simply open up a space for things to happen, and they will – not all will be good things, but some will, and, in the long run, they will win out. If that wasn’t true there wouldn’t be a world, or a town, a field or a house,

a book, painting or even a kiss. We sometimes talk about God making things, but that’s not really how the Bible puts it. In the beginning God made a space and then said, ‘let there be...’ light, dark, sun, moon, fishes, animals, birds, trees and humans. Or as a Jewish tradition has it, ‘God... made the world make itself.’

We aren’t the passive channels of creation, we are its instruments: making things happen in the great spaces of life where everything is possible. If we learn that from the past twelve months, then anything is possible – new ways of living in community, in family, on this beautiful blue-green planet. So just give life a chance – your life and the life of the world – then things will happen, and, one way or another, they will be, as the creative God pronounces, ‘good... good... very good.’

Or as the poet e.e.cummings writes:

(laugh dance cry sing) for it’s
Spring...
you and i may not hurry it...
but nobody will stop it
With All The Policemen In The
World

Services

We anticipate that a regular pattern of 10.30am services will gradually return during May assuming that the Government plans and local infection rates continue to develop as at the time of going to press. We expect that we will need to continue to invite people to register in advance for services – as this makes track and trace requirements simpler and safer but we do not expect a capacity problem. If you would like to register for the weekly information about services or have any queries about services please contact the Parish Office.

2 nd May	8am BCP Holy Communion
9 th May	8am BCP Holy Communion
16 th May	8am BCP Holy Communion
23 rd May	8am BCP Holy Communion
30 th May	8am BCP Holy Communion

Farewell

After 20 years dedicated service to the Dorchester Team Hilarie Rogers is retiring from her post as Administrator at the end of June. I know that you will want to join me in saying thank you and goodbye and we will make an opportunity to do this properly.

– and a Job Opportunity!

We are looking actively for someone friendly, helpful and efficient to take on the role of Administrator from early July. This role involves working from the office in Dorchester at least two days per week – hours can be worked flexibly around an essential presence between 9am and 12noon and in consultation with your colleague Kate Herbert. As we are coming out of Lockdown we anticipate that the role will begin at 10-15 hours per week but with potential to increase. Training will be given. Whilst familiarity with and sympathy for the work of village parish churches is not a requirement it would be very desirable. Please contact the office for a role description. Jobshare proposals considered.

Cross erected in Cloister Garden

Many Hands make light work

Thank you to the very many people who contributed to the re-erection of the cross in the cloister garden ready for Easter including: Mark Pratt (who fashioned the supporting steel from salvage), Tim Fisher, Lara Fernández de Marcos, Jon and Thomas Francis, Dan Garside, Dan Johnson, Ed Shrimpton and Mark and Florence Townson, most of whom are pictured here—except the photographer, Mark Townson.



VaccinAid

UNICEF UK has launched VaccinAid, encouraging people to 'Give the World a Shot' by donating towards Covid-19 vaccinations for the most vulnerable communities around the world. The Archbishop of Canterbury has backed this initiative which offers a simple, practical way for people to give thanks for the vaccinations for themselves or a loved one.

Please ask Rev Rachel if you want any further information. Here is the link: www.vaccinaid.org

Wallingford Food Bank

During March the food bank gave help to nearly 200 people including some Easter treats for families which were very welcome.

Your donations are still needed and are greatly appreciated by both volunteers and recipients. If too much of one item is received the surplus will go the Oxford Food Hub to be distributed amongst charities giving food to the hungry in Oxford.

We deliver all donations to the Wallingford centre once a week. Tinned vegetables and hot dogs are always welcome.

Please leave any items in the yellow box in my garage at 26 Manor Farm Road. There are also collection points in Waitrose stores in Abingdon and Wallingford.

Gifts of money are always welcome and enable the purchase of items which are needed but may not have been donated. If you wish to help with a gift of money please go to the website for Wallingford Emergency Food Bank where you will find the necessary information.

Thank you all for your continued generosity.

Judy Parker



Dorchester Abbey Museum News

**We're opening again very soon!
Come in and see us!**

We're reopening the Museum on

Saturday 22 and Sunday 23 May, 2.00-5.00pm

(subject to government guidelines)

After that, we'll be open every **Wed, Thurs, Sat and Sun, 2.00-5.00pm** until the end of September, as well as **bank holiday Mondays**.

So please do come in to say hello and have a look at the exhibits and the wide selection of greeting cards and small gifts in our shop.

Volunteers needed!

Please come and join our friendly team of volunteers who welcome visitors to the Museum. It's a great way of meeting people from the village and visitors from afar. You don't need detailed knowledge of our collection; you'll get plenty of support. Time commitment is not extensive, just an afternoon session a couple of times a month, until the end of September.

For a look round the Museum and a chat about what's involved in volunteering please contact:

Candy Madeley e-mail candymadeley@hotmail.com or tel **01865 341490**.

Edith Stedman

To mark the 60th anniversary of the Museum's first opening by Edith, we have a new display board celebrating the major contribution she made to Dorchester Abbey and the village, for which she was awarded an OBE.

We are also reissuing Edith's charming and amusing account of Dorchester life in the 1950s and 1960s, *A Yankee in an English Village*, with added photos and explanatory notes. Further details in next month's *Dorchester News*.



DADS New Nights for DADS Play Readings

Dorchester Amateur Dramatics Society

Monday evenings are now taken up

by our rehearsals for *Wind in the Willows* which we will be performing in the Abbey's Cloister Garden from **22 to 24 July**. This means that our play reading evenings will be less frequent and on different nights. This month our play readings will be held on **Wednesday 5 May** and **Thursday 27 May**. More information and registration links can be found on our website www.dads.org.uk.



Hempcroft Allotments May

May can be a difficult month on the allotment and how you get through May can set the scene for the next few months. May is a month when you can get caught out by mini droughts and heat waves. The biggest threat is to any young plants that have recently been transplanted into the open ground and any freshly emerging seedlings need to be taken care of; be sure to keep all of them well watered. On the other hand, May can be a complete disaster month bringing damaging frosts, cold winds with heavy rain or hail, so be prepared to take steps to protect plants if it is necessary.

Sowing and planting

Plant Dwarf and climbing French beans, runner beans, sweet corn, outdoor cucumbers, courgettes, pumpkins, squashes, in pots or trays under glass, – all which can be planted out next month.

Savoy cabbage, winter cabbage, endive, kale and sprouting broccoli can all be sown in the open ground now, ready to be planted out next month.

Continue making direct successional sowings in the soil of lettuce, radish, spinach, turnips and beetroot. The leeks, Brussels sprouts and French beans that you may have sown last month under glass, can now be planted out.

This is also your last opportunity to sow peas and parsnips this year.

Edward Metcalfe
edmetcalfe@yahoo.co.uk



Save These Dates

The HENGE21 performance will take place during the evening of the Autumn Equinox 2021 on:

- **Friday 24 September** in the Dyke Hills- Dorchester on Thames,
- **Saturday 25 September** in Dorchester Abbey.

Further details of the Writer's Workshop and the Artist's Challenge will be found on

www.facebook.com/HengeFestival/

Instagram: [henge.21](https://www.instagram.com/henge.21)

HENGE21 is a non-profitmaking Community Arts Event.

Adrian Brooks



250 varieties and colours of basket & patio plants all grown on the nursery

Bury Baskets Nursery trading as:

Purely Plants

Seasonal Opening:
April-July & September-November
7 days a week - See website for details

HANGING BASKET SPECIALISTS

BEDDING & CONTAINER PLANTS

VEGETABLES & HERBS

PERENNIALS, CLIMBERS & SHRUBS

e: andy@purelyplants.co.uk 01491 833 831 w: www.purelyplants.co.uk
Purely Plants Nursery, 142a Wantage Road, Wallingford, Oxfordshire OX10 0LU

ROY PASSEY BUILDERS

Interior and Exterior Builders and Decorators

Ashcroft, High Street, Benson, Wallingford, Oxon. OX10 6RP
Tel: 01491 838797 • Mob: 07860 890925
Email: roypassey@btconnect.com
www.roypasseybuilders.co.uk

AKT | **Planning+Architecture**
Chartered Town Planners and Architects

AKT is an established local practice in South Oxfordshire with a wealth of experience in all aspects of planning and architecture. We pride ourselves in providing a professional and bespoke service for our clients in and around Dorchester on Thames.

Contact Sarah or Paul for a free informal chat.
Tel: 01865 891497
www.archkingtech.co.uk

A member of the
Royal Town Planning Institute
+
Royal Institute of British Architects

RTPI

RIBA

Wallingford
— TILES & BATHROOMS —

Showroom Design Advice

Call Now 01491 377272
wallingfordtilesandbathrooms.co.uk

In House
Sales & Lettings
We value your home

Locally owned, we offer preferred rates to fellow Dorchester residents!

Whether you are thinking of selling, letting or just value curious, call us on

01491 839999

www.inhouseestateagents.co.uk

Attack by dog

On Sunday 28 March my wife Josephine was attacked and badly bitten by a black mongrel dog much like a Labrador. My wife who is an invalid and was walking using her trolley, was bleeding badly and had her trouser leg torn and ruined. She is now under her doctor and is having to report every two days. The attack took place on the path from Martins Lane down to the bypass. We have reported this to the police.

Roy Holliday

This should act as a warning to all dog owners to ensure that their dog is under control at all times.—Editor



Warborough & Shillingford WI

The April Members meeting was a historical talk on The Founding Hospital by John Caldicott.

'No More Violence' WI Walking with Women – at 6.00pm on Friday 16 March, 15 women, three men and a dog started walking quietly around Warborough and Shillingford with lanterns and placards to highlight the need for safety on our streets for everyone but especially women of all ages. Many people put lighted lanterns outside their doors or in their windows as gestures of support, which was much appreciated. The police had been notified.

A Community Project to Combat Loneliness at Easter. On Good Friday, 16 volunteers from W&S WI and the village distributed 46 home cooked little simnel cakes to 46 villagers who live alone as a token of friendship and solidarity when we cannot socialise as we used to.

At Tea and Chat on Zoom on 23 March, Caroline Prance and Julia Dionian from the recently formed Oxford Prostate Cancer Support Group came to talk about how women can support men with the disease at all stages. This is their very helpful website www.opcsg.org/homepage

The Walking Group has resumed! The first meeting was Friday 9 April.

An exciting new programme of talks, events and visits is now underway.

The Oxfordshire Federation of WI's held its Annual General Meeting on Zoom for the first time. This is a challenging time for many organisations (financially and functionally) and the OFWI is having to be very flexible to move into this new normal and thanks to the ingenuity of its members it is getting there.

Dorchester residents thank you to those of you who have been in touch about topics or joined our WI – we are delighted. So if you are reading this and feel that you would like to join us or comment on any of our activities, please get in touch with me. There are already six Dorchester residents and we would love more of you to join us! And when we start to meet in the Hall again there will be lifts available. Please call Ann Wells a Dorchester resident on **01865 341246** if you would like more information.

Pat Norman, Secretary, pnorman87@btinternet.com tel **07717 295165**



St Birinus School News

We had a busy end of term with all the children back in school after the long lockdown and we are really looking forward to a more stable and settled summer term.

We enjoyed a wonderful end of term Easter service in our bubbles at the Cloister Gardens in the Abbey and the children were very appreciative of the chocolate eggs they received. The last week of term also saw Easter hunts, baskets and decorated crosses as we talked about the significance of the Easter festival for Christians.

There is a definite sense of hope and optimism in the air and this is reflected by what we have planned in school. We hope to be able to start using the new pickleball equipment and we're looking at ways to open this opportunity up to the public. Teachers are busy planning exciting topics for the children to return to in the summer term and we hope we can run some kind of sports activity in summer. Watch this space!

If you were previously a volunteer at the school but have not been back since lockdown, or if you are keen to volunteer for us by hearing readers then please do give me a call. We are able to start welcoming more visitors now that some of the restrictions are more relaxed.

If you are interested in helping us with our fundraising and would like an added opportunity to win some money then please support us through the South Oxfordshire Charitable Lottery. Tickets are only £1 per week and you could win up to £25,000 in addition to helping our school raise funds for much needed technology. Please go to

www.socharitable.co.uk and search for St Birinus School. Many thanks!

Jo Staples
Headteacher

Advertising in Dorchester News

Costs per issue are for an eighth of a page £11.75 mono, £12.75 colour; quarter page £23.50 mono, £25.50 colour; half page £35.25 mono, £38.50 colour and full page £47.00 mono, £51.00 colour. There are ten issues per year.

Please send artwork to
dorchesternews@dorchesteronthames.co.uk
one week before the deadline for editorial copy given on page 2.

One-time adverts, please send a cheque, payable to 'Dorchester Abbey PCC', to
Nick Forman,
Willoughby House,
73 High Street,
Dorchester-on-Thames,
OX10 7HN.

RECRUITING NOW

Successful 'business mum' is seeking 5 working partners to work part-time from home, alongside & without compromising family commitments or current career.

If you have a supervisory, managerial, sales, marketing, recruitment or self-employed background, or you wish to develop an extraordinary lifestyle

**text More Info
or call Diana Page
07747 086518 • 01235 533362**

Looking for something to do for a few hours per month?

B H Lee Consultants provides advice to businesses and as our previous Administrator has recently retired we need help in our local home office on a mutually agreed basis for a few hours each week. No particular specialised experience is necessary and the working times can be flexible and agreed on a mutual time-table.

Experience of filing correspondence and the use of a laptop or desktop computer with Gmail would be helpful but only basic programmes for letters and spreadsheets are used. Training required is available and offered. Payment will be by agreement and settled on a monthly basis in arrears.

Free car parking is available on site. Your own work can be largely carried out in your own home if preferred.

This position would suit anyone who has an interest in part-time working in a very relaxed environment, and is prepared to take part in a small business organisation. The two occupants of these premises have already had the two vaccines required.

Please telephone **01865 340 320** or email **brainlee1@gmail.com** (note my name is Brian but the email is BRAIN in lower case) and suggest dates and times that you would like to discuss this position.

DORCHESTER FIREPLACES & INTERIORS

*Visit our unique showroom, opposite the beautiful
Dorchester Abbey in one of Oxfordshire's most picturesque
villages, Dorchester on Thames.*

- We offer a complete in house service from design to installation
- SIA Ecodesign ready stoves for 2022 legislation
- Our team of in-house professional fitters are all fully qualified and HETAS registered
- Complimentary home or site visit
- Showroom open 10am to 4pm Tuesday – Saturday
- Woodsure Kiln dried bags of logs, Kindling & Flamers sold here

Tel: 01865 341452 or E-mail
enquiries@dorchesterfireplaces.co.uk



WOODBURNING STOVES FOR THE 21ST CENTURY

Design

Build

Maintain

Make horted Your Choice
Landscaping

www.horted.co.uk

t: 01865-965131 m: 07565979689



Art Weeks is back!

Two addresses in Dorchester will be open to visitors. Tracy Lester will be showing her vibrant oil paintings: still lives, nature studies and portraits at **4, Martins Lane** (Venue 209). Sophia Stewart-Liberty's watercolours, alongside her sister Olivia's Buddha collages can be seen at **66, High Street** (Venue 208). Both addresses will be open on **May 15, 16, 20, 21, 22 and 23**. From 12noon to 5.00pm. with original pictures and greetings cards for sale.

Much thought has gone into making the venues covid safe: windows will be open, masks should be worn please, indoors numbers limited and hand sanitiser provided.

We look forward to welcoming you in! More information from www.artweeks.org



**Royal British Legion
Dorchester and District
Branch**

Legion Centenary Celebrations

The Royal British Legion celebrates its 100th anniversary year in 2021. It was founded on the 15 May 1921 by a merger of the four veterans associations of the First World War. Its aims then, as today, were to provide help to veterans and their families in need, to campaign for the welfare of the entire Armed Forces community and to champion Remembrance to honour the fallen.

In May 1921, the Legion President, Earl Haig, announced that he wished Armistice Day (the 11 November) to be known henceforth as Remembrance day. The red Flanders poppy, one



of the few flowers to grow on the bomb blasted former battlefields, became the national symbol to raise funds for veterans relief. For the first time, 1921 brought together all of the symbols and ceremonies of

Remembrance – The Cenotaph, Unknown Warrior, Two minutes silence, Remembrance day and the Poppy.

Later this year, Dorchester will also celebrate the anniversary of our own war memorial to the fallen from our community, which was inaugurated on the 16 October 1921.

We sincerely hope that this anniversary year will enable us both to celebrate and support the ongoing work of the Royal British Legion. Their work includes ongoing remembrance within the magnificent setting of the National Arboretum. In addition, they have pledged over £50 million to the Battle Back Centre supporting serving and ex-serving personnel who have been injured or lost limbs in more recent conflicts. This rehabilitation has been a key delivery partner of team UK for the Invictus games.

We hope, as pandemic restrictions lift, to be able to organise local Legion centenary celebrations, such as a day trip to the National Arboretum and other fundraising social activities. Until this is possible we encourage villagers to join the Royal British Legion to expand our local Branch membership. Membership is open to all (not restricted to serving or ex-military personnel) and the RBL is particularly keen to welcome families and younger advocates to carry this important work into the future. Further details can be found on the website: www.britishlegion.org.uk

Andy Pay and Charlotte Bennett
Secretary, Dorchester and District RBL branch
341959

www.iwm.org.uk/history/ © IWM (EPH 2313)



Dorchester Tennis Club

Junior Tennis Lessons

Every Wednesday Evening
Commencing 9th June for 6 weeks
£6 per session

4:30 - 5:15

4-7 Year Olds

5:15 - 6:00

6-9 Year Olds

6:00 - 6:45

9-11 Year Olds

6:45 - 7:30

12+ Year Olds

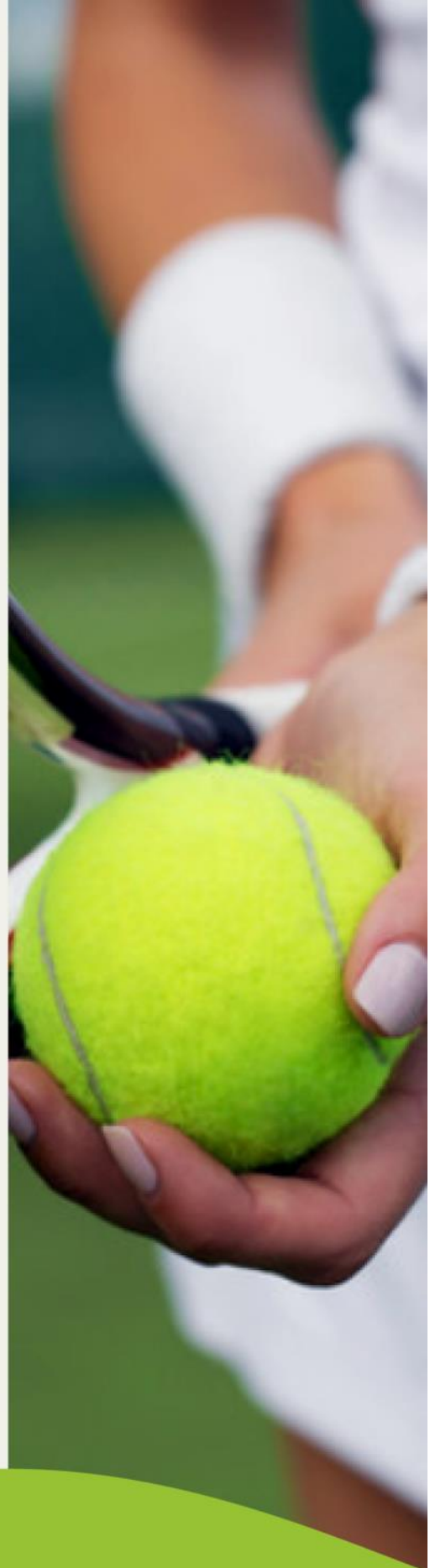
Open Day:

Sunday 30th May 10:30-12:30

Adults and Juniors Welcome

BOOK ON:

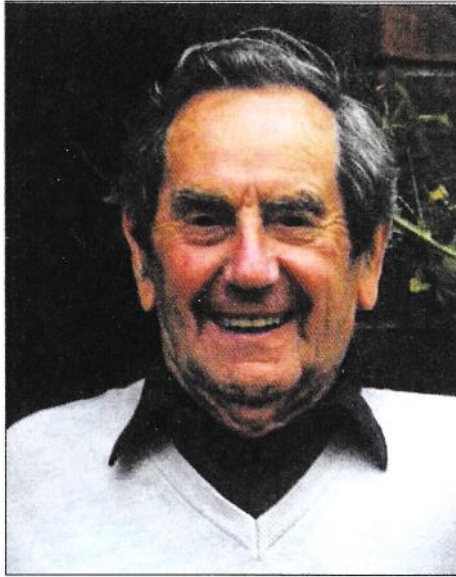
Email Andy at andy@aatennis.co.uk



John Orlando Bridgman

10 April 1929 - 12 March 2021

John Orlando Bridgman was born on the Wirral, the third of six siblings, and is outlived by a sister in the United States. Their father was a retired naval officer and the family lived in a lovely house, Rockliffe Hall - a marvellous place to grow up and which engendered in John a love of all things rural that he retained throughout his life. As Jean says - 'He was a countryman at heart and remained so all his life'. John attended the local school Caldey Grange Grammar school and was called up aged 17 and served in the army.



John and Jean met through mutual friends in Leicester - meeting once and then not again for two years. That second meeting led to marriage in Caxton Hall in London. Theirs was a modest wedding - they told few others and held a simple ceremony with witnesses followed by beer and sandwiches in the pub. At the time of the wedding John was working for the agricultural company Allens of Oxford selling tractors, and he had a business appointment in Devon for which he was able to use the company car - so Devon was the place that John and Jean spent a working honeymoon. At this stage they had nowhere to live and, stopping in Henley on Thames rented a house in St Marks Road.

John continued to work for Allens until his empathy with the farming community and knowledge of the industry led to his being retained by Mercedes Benz to sell their new and revolutionary 'Unimog' farm machine. This led to an international career and John travelled with Mercedes Benz to Australia and elsewhere throughout the world bringing his easy relationships with farmers and enthusiasm for the Unimog together.

However exciting international travel is there comes a time when home beckons and for John that happened when he was offered a local job in Henley as Managing Director of the Henley Standard, a post he held until retirement. His was a new position as his duties were previously the responsibility of John Luker, who was then company chairman and whose family has owned the business since 1900. While John was in post, Higgs Group was the first company in Britain to be recognised for its high standards by the newly-formed Printing Industries Quality Group. Henley MP Michael Heseltine, then also deputy prime minister, presented him with the organisation's quality verification certificate a few months before his retirement.

In retirement John spent time walking in the Chilterns and also learned the craft of silversmithing, leaving some beautiful mementos of his skill. John and Jean moved to Herringcote in retirement and John was involved in a number of village activities including stewarding in the Abbey and helping in the Museum.

A Tribute to My Friend Roy Whiting

Roy sadly passed away, after a short illness, on Thursday 11 March 2021, aged 76.

Our thoughts are with his wife, Ann, sons, David and Johnathon, and all of his family.

He was born and grew up in Dorchester on Thames, where he met and married Ann before moving to Benson.

Rest in peace dear friend.

Roy Passey

I knew Roy for nearly 50 years. We started playing football together and then he went on to become Manager of both Benson and Dorchester Football Clubs. We had a lot of success and even had a mention in The News of The World on one occasion. We also played darts together for the local team at The Crown, Benson.

When I first set up my business, Roy started working for me as a decorator one day a week and then joined me full time. He worked for me for 45 years, but he was not just a work colleague, he was a very close friend. Even when he stopped working, he would often call into the office for a cup of tea and we would reminisce about old times, often looking at old photos. He also enjoyed joining us on our annual Christmas trip to Ascot Races, where he was always the life and soul of the party. He will be sadly missed by myself and all his work colleagues.



Roy Whiting on left with Roy Passey



Q SELF STORAGE

www.qselfstore.co.uk

(by 'H' Café, Berinsfield & Dorchester roundabout)

We store:

- * 20ft secure units for household and business-----£31.06 inc. VAT per week
- * 10ft secure units for household and business-----£21.40 inc. VAT per week
- * Caravan, trailers and RV's -----£672.00 inc. VAT per year
- * Fenced open storage with or without 20ft container-----POA

*** Access: 24/7-365 days

*** Electronic coded gate

*** Padlock supplied

*** Excellent access, straight to unit doors

*** HIAB collections for larger commercial items

*** Household removal quotes

*** Entrance barrier

*** Tracking CCTV

*** HGV access

Tel 01235 847164 any time to view or book



Here to help you find and book the perfect holiday....



Arranging a holiday can be very frustrating and challenging. But with Full Circle Travel, it doesn't need to be.

- We are a local, independent travel agent with mature, professional and well-travelled consultants.
- You do not pay more for our service but get a lot more than booking direct.
- You can book with your favourite tour operator but book locally.
- We are ABTA and AITO members and ensure your money is safe in an uncertain world.
- We listen, we care and are passionate about finding you the perfect holiday.
- Search 'Full Circle Travel' at www.trustpilot.co.uk to read what our clients say about us.

A selection of operators you can book with us at no extra cost to booking directly:

Club Med - Cox and Kings - Abercrombie and Kent - Mark Warner - Audley Travel - Explore - The Adventure Travel Company
 Royal Caribbean - Carrier - Western & Oriental - If Only - Beachcomber - Exodus - Kuoni - Viking River Cruises - Seabourn
 Riveria Travel - Silversea - Regent Seven Seas - Classic Collection - Prestige Holidays plus many more - please just ask.

Full Circle Travel, 59 St Marys Street, Wallingford, OX10 0EL

www.fullcircletravel.co.uk

T: 01491 833227

E: holiday@fullcircletravel.com

BUS SERVICES FROM DORCHESTER



and Wednesdays, start from the Abingdon Road and then pick up at all stops in the village and additionally outside the entrance to Herringcote. The first journey leaves Herringcote at 10.10, followed by a second journey at 10.45. You have a choice of journeys back from Wallingford Market Place at 12.15 or 12.50. If you want to go to LiDL, the 10.45 journey will take you there and you can be picked up at 12.10 (from the stop on the north side of Lupton Road, just across from LiDL).

And there's more good news - because all these journeys are scheduled public bus services, there is no need to book in advance - you can just turn up and go! Also, Concessionary Bus Passes can be used so if you have one you can have free journeys! For anyone who doesn't

Did you know that Going Forward Buses, a local community interest (not for profit) company based in Goring, has been running buses through Dorchester Village for over three years now? From this April, we are revising our timetable and now run a service every Monday to Didcot via Long Wittenham, dropping off at Tesco Extra (also for B&M), Aldi, Broadway, Parkway station and the Orchard Centre taxi rank. The bus leaves from the War Memorial stop at 09.53, and will observe all bus stops in the village - plus anywhere else it is safe to stop. You just need to give a clear hand signal to the driver. The return journey starts from Tesco Extra at 12.00 and picks up at the same stops as the outward journey, getting back to Dorchester at 12.26. It then goes on to Wallingford. On Wednesdays, there is a service to Wallingford Market Place departing from the War Memorial at 09.50, returning from Wallingford Market Place at 12.00.

But the exciting news for Dorchester residents is that Going Forward Buses will be running a replacement service for the Dorchester Flyer every Friday, starting on **9 April**. There are two return journeys which, like the other services on Mondays

have a pass, the fare to Wallingford is £3 single or special offer £4 return, Didcot £4 singles or special offer £6 return. Children aged 5-18 travel at half fare. We can only accept cash payments (sorry we don't yet have the technology to accept contactless payments!) And unfortunately we cannot give change so please have the exact fare available or offer any change as a donation towards helping to keep the bus running. We don't receive any subsidy from the County Council so are dependent on people using the bus so that we can cover our running costs. Some of our drivers are volunteers. If you are interested in helping with the driving do get in touch using the details below.

Full details of the new service are on our website goingforwardbuses.com and at the bus stops. Copies of the timetable will also be available on the bus. Our phone number for enquiries is **07484 605888**. We look forward to welcoming you on board!

Mike Ward

Managing Director Going Forward Buses CIC

GOING FORWARD BUSES					
DORCHESTER FLYER			Fridays from 9th April 2021		
Towards Wallingford			From Wallingford		
WALLINGFORD, Market Place	09:55	10:30	Wallingford LiDL	12:10	
Burcot, Abingdon Road Junction	10:04	10:39	WALLINGFORD, Market Place	12:15	12:50
Dorchester by-pass			Dorchester War Memorial	12:25	13:00
Dorchester Herringcote	10:10	10:45	Dorchester Herringcote	12:27	13:02
Dorchester War Memorial	10:13	10:48	Dorchester by-pass		
WALLINGFORD, Market Place	10:28	11:02	Burcot, Abingdon Road Junction	12:30	13:05
Wallingford LiDL		11:06	WALLINGFORD, Market Place	12:45	13:19
CONCESSIONARY PASS HOLDERS TRAVEL FREE ON ALL OUR SERVICES					
Adult single to Wallingford £3, return £4			Adult single to Didcot £4, return £6		
Child 5-15 half fare					
All services subject to change at short notice			Advance booking not required		
Please check our website goingforwardbuses.com or call 07484 605888 for latest news					

For other Going Forward services, see page 30.

Sights and Seasons in Dorchester-on-Thames

Local Artist Sophia Stewart-Liberty interviewed by Melinda Powell

This year, the Easter message of new life born of sacrifice, so beautifully evoked in the Abbey's display of 'The Empty Tomb' in the Cloister Gardens, holds new layers of meaning as we begin to leave four seasons of lockdown behind. The spring brings a special spirit of renewal as we look forward to resurrecting our lives anew both individually and collectively.



Sophia with her dog, Louis

This year, Oxfordshire's May Festival of Art Weeks marks the re-opening of our lives by offering over 250 venues for exhibits alongside hundreds of virtual art shows (www.artweeks.org/festival). Dorchester resident Sophia Stewart-Liberty will be taking part, and so I took the opportunity to ask her more about her artwork – its connection to the sights and seasons of Dorchester-on-Thames, and to the creative spirit alive in Nature and each of us.

When did you move to Dorchester-on-Thames and, as an artist, what drew you here?

I moved here from a teaching job in London in 2016. For artistic inspiration I wanted to be near hills, water and woodlands; and so Dorchester was perfect. I'd been through the village a couple of times previously on walks and had been really wowed by it.



Early morning on the Hurst

Tell us about a bit how you work, your preferred medium, and something about your creative processes.

I am obsessed by anything luminous. I work in watercolours because the white of the paper can glow through layers of translucent colour and help achieve the luminousness I'm after. Once I've found what I'm looking for in the landscape (usually an arresting view with sweeping lines and special light) then I

take some photos on my phone and make a rudimentary sketch to remind myself why it's worth working on. I find paintings definitely seem to work better if I begin them, at the very least, in my sketchbook that same day; the original idea stays fresh in my mind. Written notes can help too. The paintings take several days to complete, as each layer has to dry, and I need to keep looking at them to check I'm still on track.

What was your earliest memory of taking pleasure in making art? When did you think you'd like to be an artist?

I can't remember a time when I didn't want to be an artist. I've always drawn and painted. My mum is art-trained and an excellent draughtswoman, and my beloved great aunt was a brilliant painter, whose wisdom about the placement and speed of execution of each brush stroke and about the importance of movement within a painting still echoes in my mind: her still-life apples looked like they were whirling around in a twister – so exciting.



Thame River

Tell us about your background as an artist. How have you learned your craft, what other artists have influenced your work and how?

Both my undergraduate and postgraduate degrees were in fine art printmaking. I mainly used lithography at art school in a similar way to the way I use watercolour now, veils of translucent colour, each allowing the colour below to show through. As a hangover from litho days, I still sometimes use stencils and occasionally printing (nowadays with potatoes!) in my work.

The artists I love are Monet for his colours and the insubstantial ethereality of his forms: unsurpassed magic, to be able to make a canvas disappear like he could, as if in a cloud of mist.

Ivon Hitchens: so bold! So economical! His colours are wonderful: dark chocolate brown with ochre and mauve, all put on together in one stroke, alongside a sweep of violet-blue. Fantastic sense of place, too.

I love Winifred Nicholson. Her paintings are best known as greeting cards, but this does her a disservice. She was second to none for her depiction of light: sun shining through the delicate petals of flowers on a windowsill, the myriad colours in a shadow. She taught herself to paint at speed: a single mother of three very young children. Domestic and feminine, perhaps, but should not be considered less important for that.

I admire Rothko's paintings, and the almost transcendental state that they can evoke in a viewer. It is incredible that a canvas and some paint can change a human's emotional state so profoundly. Something to aim for!

How has your life experience influenced your art?

It must have, I suppose, but I might be too close to see. I know I have always been drawn to landscape and those moments of timelessness and one-ness with the universe that can be experienced when outside, and particularly when alone. I want to be there at that magic moment, hearing the cuckoo, glimpsing the kingfisher, seeing the shoal of minnows and watching that ray of sunlight falling and illuminating things unexpectedly, picking out previously unimagined colours and patterns, making you gasp with excitement at that moment of fleeting beauty.



Broken Ice, Overy Mead Piece

For this interview, you've shared five artworks that portray scenes in and around Dorchester-on-Thames through the seasons. Would you tell us the story of one of these artworks? If the painting could speak, what would it say?

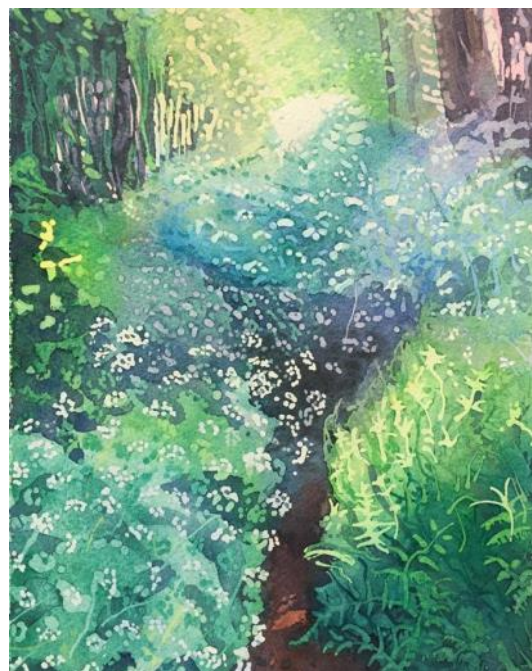
The most recent of the paintings shown in this article is the one from Overy Mead Piece, 'Broken Ice'. It is from February 2021 during the second 'Beast From The East'. If it could speak to me it would say, 'Why did you make that shape so tall?! Where's that lovely turquoise you meant to put in? That bit at the back hasn't quite translated, has it?' However if it could speak to someone else, I hope it would keep its nasty snippy criticisms to itself and say, 'Did you see the ice when it looked like this? Were you, too, amazed by the variety of colours as the light shone through and reflected off it? Were these your footsteps? Don't you love my glitter? Can you hear my cracks and creaks?'



Frosty Morning Fruit Cage

Since moving to Dorchester-on-Thames, you've taken part in many local art projects. Tell us what you're involved in now and what you would like to paint in future.

I've opened every year for Art Weeks and have shown in Oxford with the Oxford Art Society. Presently, I've got a couple of paintings in an online OAS members show. I'm opening in May for Art Weeks, showing with my sister, Olivia, here in Dorchester. I'll also be taking part in Adrian Brooks's project 'Henge 21' in and around the village this September. In future, I'd like to paint more of the same but better: less representational, more magical, more moving, more arresting and more luminous.



Cow Parsley Path

Website address: sophiastewartliberty.com
Contact info: sophiastewartliberty@gmail.com
(Commissions welcomed)

Contact Melinda Powell at DRimelinda@ccpe.org.uk, if you have a topic you would like written up or if you would like to be included in a 'newcomer' article.

A Spring Village 3 to 5 April.

The Flower Show Committee would like to thank everyone who helped to make our show with a difference – A Spring Village – such a success. More than 50 different households took part and the overall effect was wonderful. One of our stalwart supporters from Drayton St Leonard even brought over a planter full of blooms to help with the decorations. Special thanks to those who decorated public areas as well as their own houses – you know who you are.

Whether it was during the balmy sunshine of Easter Sunday, or in the freezing blasts on other days, there always seemed to be people exploring the village with maps in their hands, and having a great time doing so. Let's do it again sometime, but let's also hope that this Autumn we'll be able to return to the Village Hall for a traditional show.

The Flower Show gives occasional donations to various organisations, and this time we will be making a donation to the Abbey.

The Committee

A clear blue sky on Easter Day meant a bright and sunny day for those tracking down the Spring Village displays. And what was on show was very varied: from flowers, real or not, to Easter bunnies, eggs on trees, knitted flower pots, and decorated cars. They were not just in gardens and windows but on street signs, on cars and, of course, decorating the bus shelter. Here is a selection of some of the pictures taken by our Spring Village photographers.



Photo: David Wilkinson



Photo: David Wilkinson



Photo: Gaynor Roberts



Photo: David Wilkinson



Photo: Gaynor Roberts



Photo: Janet Delaine



Photo: Gordon Roberts



Photo: David Wilkinson



Photo: Gordon Roberts



Photo: Gordon Roberts



Photo: Gordon Roberts



Photo: Gordon Roberts

Dorchester Open Gardens

Saturday June 26th 2pm-5pm



We are looking for new gardens!
Could you open your garden to
help us raise money for the Abbey?

Your garden does not have to be
perfect, large or finished,
just interesting!

*Also looking for any donations of spare
plants or seedlings for a plant stall*

Contact Steph Forman
01865 340434
steph@forman.org.uk

Dorchester Safari Supper

Saturday 3rd July

£25 per person incl all food & 3 glasses of wine
Fundraising for Dorchester Abbey

7pm drinks & canapes

Main course (at a house in Dorchester)

Pudding (at another house in Dorchester!)

Coffee (at Dorchester Rectory)

Tickets from:
Steph Forman
steph@forman.org.uk
340434

‘Ecohydrology – what is it? And why should I care?’

As residents of Dorchester we are surrounded by rivers, streams and lakes, a *Hydropolis*, in Leland's 1545 epic poem. The ancient history of settlements around us and the well being of the people who lived in them were connected to either controlling the flood waters, or harnessing them for food and fisheries. The Dykes, the Overy Mill, the sluice and weir at Buckpool Spinney are a legacy of this long history. Today we see these waters differently – from the aesthetic and the environmental perspectives. 2020-21, ‘the years of COVID’ left many residents appreciating the peace and serenity of the standing or flowing waters – even when in flood. Perhaps, looking at these scenes, residents also pondered about the organisms that live in these waters – this, in a nutshell, is ‘ecohydrology’! It's the science of the flowing waters (hydrology), and of the living organisms – from minute microbial organisms in sandy beds, through to the grasses and other plants (ecology) that we see within the channels and across the meadows. In Dorchester we are very fortunate to have this science turn into action around the Old Bridge Meadow and on the Hurst Meadow. New ponds and backwaters will be constructed during the late summer of this year. We will then be able to see ecohydrology in practice!

Why should we care about ecohydrology? Over the last few centuries there has been a global worsening of water quality, a loss of natural fisheries, and a destruction of meadows with their flowers and diverse insect life. Even so, it is refreshing to note that in recent years such losses are being gradually reversed. Flood plain meadows, such as the ones around Dorchester, are in the process of being returned to an enhanced ecohydrology around the world. Organisations such as the Floodplain Meadows Partnership, working across the UK sponsoring such improvements, have made ecological observations in our meadows around Dorchester. The visionary purchase of the Hurst in 1996 for this purpose, led by Peter Pritchard, is a proud testament to this.

With the enthusiastic prompting from Andrew Clements and Peter (in 2015), and drawing on the science, I formulated a modest ‘ecohydrology vision’ for our meadows. It covers the stretch from the weir at Buckpool to the confluence of the river Thame with the Thames. Noting this, Earth Trust included the Old Bridge Meadow into their much acclaimed River of Life II project - through which we gain a new pond and a small backwater. At the same time with another small grant, the old dry channel on the Hurst will be modified to create several small ponds.

How do these efforts enhance our local ecohydrology? On the aesthetic side, we will see more ponded areas, filling in the winters, and drying out much later than usual in summers. Wetting the land in this way encourages the natural emergence of new plants and wild flowers. Less visible to the naked eye, we can expect to find an increase in microbial organisms in the water and soil, which are essential nourishment for insects, soil borers, mayflies, caddis flies, dragon flies and a host of other invertebrates, increasing biodiversity. In addition, through increasing the wet areas of the flood plain, we get more carbon capture. Bringing all of these together increases what is called the ‘natural capital’ of the flood plains. This is a way of accounting for the value of natural assets and the benefits that we gain. Monetary values can be ascribed to such assets. In the case of flood plain meadows, per hectare, they amount to



£192 for ‘water’, £203 for ‘sense of place’ and £499 for ‘biodiversity’. The ‘sense of place’ is a means of monetising social history, enhancement of landscape, its intrinsic appeal, not forgetting enjoyment of the outdoors, health and well being. The figures come from a very detailed analysis at Chimney Meadows National Nature Reserve (www.bbwt.org.uk/nature-reserves/chimney-meadows) which is a few miles west of Abingdon.

The meadows and the flood plains around Dorchester are small in area. Nonetheless they are undoubtedly of very high value to the local residents. Although in monetary terms more modest than Chimney Meadows, with the construction of the new ponds and backwaters, and in the years to come, they would increase significantly.

Ecohydrological enhancements work best when applied along the full length of rivers. Fortunately, the ‘ecohydrology vision’ has encouraged the River Thame Conservation Trust and Environment Agency to pursue a plan to install a ‘fish pass’ on the weir at Buckpool Spinney. Such passes enable fish to spawn in upstream pristine areas. This enhances the aquatic ecology of waterways. Fish passes are also the means for a myriad of water organisms, essential for ecology, to freely move up and down rivers.

All in all these modest, but environmentally invaluable ecohydrological activities in the vicinity of our flood plains are worthy of pride for the residents of Dorchester!

Shammy Puri
Dorchester on Thames



Ecohydrology – the blue arrows show the flow of water in the river, and in the ground. The white arrows depict the inter-change of organisms. The dotted area is the sandy bottom of the stream, the ‘home’ for micro organisms – the hyporheic zone.

More information https://en.wikipedia.org/wiki/Hyporheic_zone

The White Hart

Dorchester on Thames
01865 340074



Market Menu

Available Monday to Friday Lunchtime
Early Dinner Weekdays 6pm-7pm

Come along to the White Hart and enjoy a delicious two course menu for only £15 (three courses £18). This special menu is available Monday to Friday for early dining with orders taken before 7pm and at lunchtimes.

(Restaurant Club discount not applicable)

www.white-hart-hotel-dorchester.co.uk

your
Home
your safe place



Bluebird Care South Oxfordshire

Call our friendly team today to see how we can tailor a care package for you.

01491 225 046

southoxfordshire@bluebirdcare.co.uk
bluebirdcare.co.uk/south-oxfordshire



ARBOCARE TREE SURGERY LTD

Tree surgery
Landscaping
Grounds Maintenance



**Qualified, insured,
experienced arborists**

- Contractors to the National Trust
- Surveys & reports
- Patios & Decking
- Turfing & Fencing

For more details contact us on:

Freephone **0808 155 5815**

Mobile **07778 811136**

Email mharvey31@gmail.com

www.arbocare.co.uk



Great News

BERINSFIELD LIBRARY IS NOW OPEN

Please note the slight change in opening hours.

Monday - closed

Tuesday 2.00-5.00pm

Wednesday 10.00am-12.30pm & 2.00-5.00pm

Friday 10.00am-12.30pm & 2.00-5.00pm

Saturday 10.00am -12.30pm

Our community activities are all on hold for the moment but we will be back.

Pop in and see us.

We will meet and greet you, have a one-way system, and books are quarantined for 72 hours. All welcome.

**Visit Your Local Library and See
What We Have on Offer**

www.oxfordshire.gov.uk/libraries

@OxonLibraries

Oxfordshirelibraries



Need a good read?

It is so incredibly good to be able to say that The Wallingford Bookshop is back open after the long lockdown. There's nothing so good as having people come in to browse the shelves and chat about their latest reads. Do come and see us. We're happy to deliver for free, too. **Karen** ([instagram.com/bookreaderkaren/](https://www.instagram.com/bookreaderkaren/)) lives in the village and frequently brings books back to Dorchester for customers. To order, or ask for recommendations, give us a call on **01491 834383** or email us at **books@wallingfordbookshop.com**.



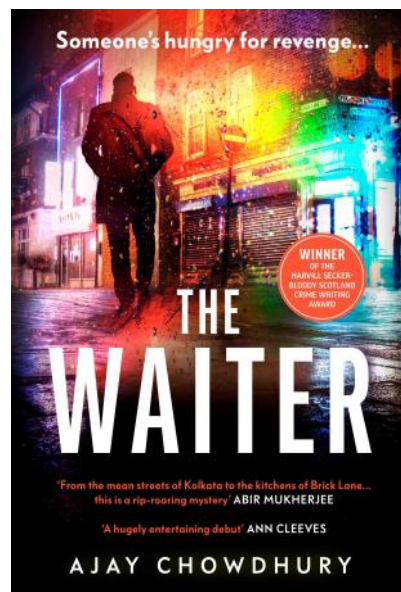
For adults:

Lean Fall Stand by Jon McGregor (HB, published 29 April). Doc is a veteran Antarctic fieldworker, working alongside two younger scientists. When a brutal storm descends, the men become separated in the whiteout. Their thoughts are frantic; their panic, visceral. Then, all is calm and quiet. Doc wakes to find himself in a Chilean hospital, having suffered a stroke. His wife, Anna, arrives from England to find him unable to fully understand or use language. Doc's supervisors keep contacting him, wanting to find out what went wrong at the isolated polar station. But Doc can't even say the word 'no', let alone form a sentence. When Doc returns home, Anna has to adapt to her new life as a carer whilst still holding on to her sense of self. Frustrations and wry humour result, because the right words are always just out of reach.

The Waiter by Ajay Chowdury
(HB, published 27 May).

Life hasn't exactly gone to plan for former detective, Emil. Having left his hometown of Kolkata in disgrace due to messing up the murder investigation of an A-list Bollywood actor, he's somehow ended up waiting tables in the curry

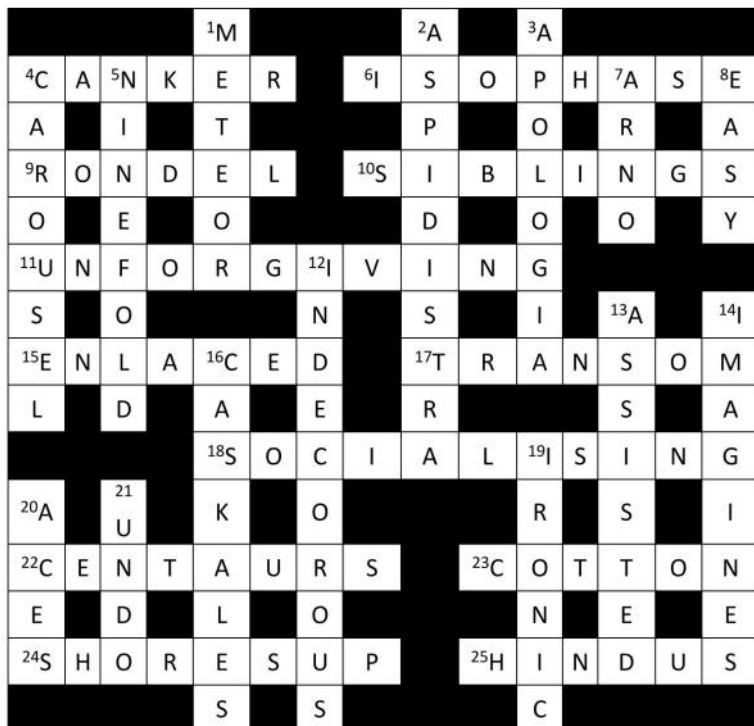
houses of London's Brick Lane. Life is quiet but simple (and overflowing with delicious Bengali food!), until his boss's multi-millionaire best friend is found dead: bashed over the head with a whisky bottle and floating in his swimming pool. Likeable and witty Emil spots a chance to redeem his career, only to find the backstreets of Kolkata catching up with him. This Winner of the Harvill Secker-Bloody Scotland Crime Writing Award is an intriguing and easy read, sprinkled with characters not above a bit of sarcasm.



Dorchester News Crossword No.16

Solution Compiled by Slider

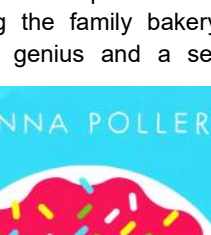
Compiled by Slider



For children:

Monster Doughnuts by Gianna Pollero
(PB, published 15 April).

Everyone knows that monsters love cakes, right? Ten-year-old Grace and her big sister, Danni, definitely do. Since their parents went missing, Danni has been running the family bakery. There, Danni uses her baking genius and a secret weapon – exploding baking powder - to make very special cakes that can quite literally make monsters explode. So, watch out, Bath Dwellers, Button Gobblers, Messer Uppers and Snack Snafflers, because next time you snatch a jam tart you might get more than you bargained for. This fabulously funny story is for 5 to 8 year olds.



despite the national restrictions our essential services have been running continuously, with plenty of safety precautions in place. We are very pleased to be able to help disabled children on the path to mobility and parents have expressed how relieved they are that we have not had to close, as disabled children need really regular physiotherapy to ensure they don't lose progress.

Rohan's Footsteps



Nine-year old Rohan Fateh has the rare genetic condition Aicardi-Greubere Syndrome. His family bring him to Dorchester for therapy fairly regularly – around twice a year since they found the Footsteps Centre in 2018. I asked Rohan's dad what motivates them to come so often.

'We have noticed lots of improvements in Rohan's ability with Footsteps. He was unable to sit up on his own and we used to have to spoon feed him. Now he can balance himself to sit up, and his fine motor control has really improved, meaning he can feed himself. He's also walking about 200m with a walker at home and school. He wasn't able to walk with it at all before and then he could maybe manage 10-15m, so this is a big increase. Rohan didn't always like coming to Footsteps to start with, and he can seem a bit reluctant, but as time goes on, he has realised that he is able to do more things and so it's worth it.'

Rohan goes to a mainstream school which has funding for SEND and they make a big effort to include him. He joins in with normal lessons and is doing well. The school also have separate classes for the 'talking i-pad' group. This is special voice software on his i-pad, provided by the NHS. This allows Rohan to string a sentence together from individual pre-recorded words, meaning he can communicate and get his point across. They do some physio at the school, once per week and Rohan has a private physio at home as well as enjoying swimming & horse-riding (pre-lockdown). So he keeps very active and busy day-to-day. At Footsteps, Rohan is working on his core strength, walking and sitting up. He's also having orofacial therapy, helping him get used to eating more solid food

His dad tells us: *'We are so proud of him, he's come a long way, doesn't get upset with change and new things as much as he used to and his mobility has greatly improved.'*

Footsteps Fundraising Does your company or school raise money for a Charity of the Year? Are you interested in doing a challenge event such as a bike ride or running race in 2021? Or perhaps you want to host a tea party or BBQ fundraiser now that we can congregate in gardens! We rely on supporters like you to keep our valuable work going. Please speak to maggie@footstepsfoundation.com if you have an idea for helping Footsteps Foundation to help disabled children.

Hedgehog AWARENESS WEEK

02-08 May 2021



Hedgehog Awareness Week runs from **2 to 8 May 2021**, it is organised by the British Hedgehog Preservation Society (BHPS) and takes place every year. It aims to highlight the problems hedgehogs face and how you can help them.

This year the Charity is asking people to create their very own hedgehog haven! Gardens are a stronghold for hedgehogs, and we can make their lives so much easier with very little effort!

There are many things we can all do to help hedgehogs; here are just a few:

- Make sure hedgehogs can access your garden with a 'Hedgehog Highway' a 5" x 5" (13 x 13cm) square gap in the bottom of fences or walls should do it! Once created you can log these on the BIG Hedgehog Map at www.bighedgehogmap.org
- Create a log pile that will offer shelter and food
- Build a Hedgehog Home (see plans at www.britishhedgehogs.org.uk/hedgehog-homes)
- Move piles of rubbish to a new site on the day you are burning it.
- Check areas carefully before mowing or strimming.
- Ensure netting is kept at a safe height.
- Check compost heaps before digging the fork in.
- Stop using pesticides and poisons.
- Cover drains or deep holes.
- Ensure there is an easy route out of ponds & pools.

Hedgehog AWARENESS WEEK

02-08 May 2021

You can donate to the 2021 #HEDGEHOGWEEK appeal at www.justgiving.com/campaign/HAW21



For further details visit our website...

www.britishhedgehogs.org.uk

British Hedgehog Preservation Society, Hedgehog House, Dhustone, Ludlow, Shropshire, SY8 3PL Tel: 01584 890801

Parish Council Notices

Change to Arrangements for Monthly Meeting

Government approval for Parish Council meetings to be held remotely has not been extended beyond Friday 7 May.

The May Parish Council meeting will therefore take place via Zoom on **Wednesday 5 May**, one week earlier than normal. It will follow the Annual Parish Meeting which will also take place via Zoom commencing at 7.30pm.

The Agendas will be posted on Village noticeboards and on the Parish Council section of the Village website at least one week (Parish Meeting) and three clear days (Council Meeting) in advance.

Parish Council meetings are open to the public and any resident who wishes to raise any matter of concern is welcome to do so at the start of the meeting. Please contact the Clerk no later than 3.00pm on the afternoon of the meeting so that the necessary access arrangements can be made.

Meetings from June

According to the Government's 'Roadmap' it is hoped that all legal limits upon social contact will be removed from 21 June. It is therefore possible that the June Parish Council meeting will be delayed until **23 June**. Please see next month's Dorchester News for confirmation of what has been decided and details of the arrangements that will be made regarding such things as seating and the handling of papers.

Contacting the Parish Council

The Parish Clerk is Geoffrey Russell of The Pigeons (next to The Fleur de Lys), 5-7 High Street, Dorchester-on-Thames OX10 7HH Telephone (during normal office hours, please, unless an emergency) **07745 311439**. Texts are always welcome. e-mail: parishclerk@dorchesteronthames.co.uk

Cllr Mark Williams, the Chairman, can be contacted via chairman@dorchesteronthames.co.uk

For information about the Parish Council go to www.dorchester-on-thames.co.uk/parish-council/

This includes the minutes of all Parish Council Meetings and financial information such as monthly bank balances and payments as well as a record of all planning matters upon which the Parish Council has been consulted and regular reports from our County and District Councillors.

From the Chairman of the Parish Council



As a warm few days and a sunny, if chilly, Easter, head us towards summer I hope we are all looking towards a bright, lively and 'socially engaged' time as lockdown eases. As we go through the various stages of this easing please do continue to respect each other's space and ensure that all our residents and visitors feel comfortable as things return (hopefully) to normal.

To follow on from the litter picking, fairy doors, Spoonville (over 140 spoons when I counted last week!) we have now had the creativity across the village of the alternative Spring Flower Show. Thanks go to the committee and congratulations to all those who made the village more colourful over Easter. And then we've had the delight of all the lambs and, I believe, baby alpacas (Google tells me its a 'Cria') to come in due course, with more fun to come I'm sure with more events in the months ahead. So lots more to keep us all out and about whilst we contemplate holidays further afield.

Stay safe and take the jab!

Mark Williams
Chairman DoT Parish Council

WILL O'LEARY - Letters in Stone



www.willoleary.co.uk ~ will@willoleary.co.uk ~ 07971 062372



Culham
Garden Services

Local, Reliable and Professional

James Rockall
13 High Street
Culham
OX14 4NB

Available for all aspects of garden
maintenance and clearance

Call: 07857383069

james@culhamgardenservices.co.uk

Regular maintenance. One-off services. Public liability insured.
References available. Est.2012



L B Plumbing

Toilets, taps, immersions,
showers, leaks and more,
no job too small

Fully insured, free estimates,
no call out charge

Call Lee 01491 834484/
07981642688

Larkmead
VETS



We're working hard during the current UK situation to continue to provide a service to patients that need essential care in line with Government Guidelines.

We can provide video consultations directly with one of our vets to discuss options.



The situation can change rapidly so we are trying to keep our website and social media up to date with latest info!
www.larkmead.co.uk



Online booking available
<http://bit.ly/bookthevets>



01491 651379 | Cholsey | Benson | 01235 814991
Didcot | Great Western Park | Sutton Courtenay

The Landscape Group Oxford

GARDEN, GROUNDS & PROPERTY MAINTENANCE

Based in Stadhampton we deliver:

- Garden and Grounds Maintenance, including tidying, pruning & mulching
- Fencing, Turfing, Lawn Repairs
- Hedge Cutting and Tree Work
- Drives, Patios and Landscaping
- House and Garden Clearance
- Property Maintenance, inside & out

Give your garden a Spring Clean!

£10 million Public Liability Insurance. Trading Standards Approved.
Safecontractor Accredited. NPTC & Lantra Qualified.



'QUALITY, SERVICE & VALUE'

Tel: 01865 341750

e: lee@tlgo.co.uk
w: www.tlgo.co.uk



T: 01865 890548

F: 01865 890198

E: info@fourwindsgarage.com

**Local, Professional
Vehicle Technicians**

- MOT's
- Servicing
- Repairs
- Diagnostics
- Bodywork
- Welding
- Free collection and delivery
- All makes covered



From your District Councillor... ...Robin Bennett



Local Elections, 6 May 2021

Although there are no normal SODC elections this year, we will still be going to the polls to elect our new County Councillor and the new Police and Crime Commissioner. Thanks to the heroic efforts of our elections staff and volunteers, polls will be open from 7.00am to 10.00pm on **Thursday 6 May**. For information about the measures we are putting in place to help keep our polling stations Covid-safe, please visit the polling stations page on our website: www.southoxon.gov.uk

A new joint Local Plan

South Oxfordshire and the Vale of the White Horse District Councils have now agreed to develop a joint Local Plan, which would take the Councils through to about 2040/41, rather than producing new individual plans. There should be significant cost savings from taking this route, in gathering evidence, the development of policies and the inspection process. There is also strong logic in working together on issues such as the development of Didcot, affordable housing and on environmental policies and practices. Final decision-making would still lie with the individual Councils in order to ensure local accountability, and the importance of Neighbourhood Plans is unaffected.

Recycling Success and Litter Picking

You will have seen the good news about South Oxfordshire coming second in the table of 'top recyclers' across the country, with 64% of household waste being sent for recycling. Our next challenge is to focus on reducing the waste we produce in the first place through Repair Cafés and such like. We are also pleased that SODC is now able to support community litter picks once more.

Recent Council Motions

Our most recent Council meeting had a packed agenda, and lasted a full four hours! Amongst other matters, there were 8 motions on the table, all of which related directly to two of the themes within our Corporate Plan (Theme One: protect and restore our natural environment and Theme Four: improve economic and community well-being.)

All eight motions were passed, including ones to take action to reduce light pollution and the undergrounding of high voltage power lines, one to work closely with Clinical Commissioning Groups to ensure adequate provision of health facilities in our growing communities, one to support a pilot project for a Universal Basic Income in South Oxfordshire, one to establish the principle of community wealth-building in major new developments like Berinsfield and Didcot, one to ensure that developers provide adequate leisure facilities, one to extend the existing policies on diversity and inclusion to cover neurodiversity and finally one to provide as much support as possible for rural pubs as community assets.

New cycle hub at Didcot Parkway opens

Didcot Parkway Station has just opened its new cycle hub with

space for an extra 600 bikes. The hub caters for standard and non-standard bikes to be securely parked. It is fitted with CCTV, motion sensor LED lighting and bike repair stands.

Affordable Housing - Government drops plans to raise small sites threshold

The Government has confirmed that it will not be pursuing a plan to change the threshold for affordable homes to be provided on new housing sites. We had raised concerns about the resulting loss of affordable housing, so are pleased at this result.

The first phase of leisure centre opening from 12 April

Following government advice that leisure centres can start to reopen from 12 April, we are working with our contractor GLL on a phased approach to re-opening our centres. We recently agreed to offer a financial support package to GLL. The leisure industry has been hit really hard by the pandemic having spent much of the last year closed or running to a limited capacity. Centres, facilities and activities are only opening where it is possible to do so and maintain social distancing. The capacity and procedures in place will be kept under constant review.

We will also be re-opening the outdoor pool at Riverside in Wallingford. Last year the pool remained shut as a result of the lockdown restrictions, but this year the plan is to open for the summer season. As ever, the most up to date information will be at www.better.org.uk

Restart Grants

The Restart Grant is a one-off grant for rate paying businesses that predominantly deliver in-person services for the general public. It will pay up to £6,000 for non-essential retail businesses, and up to £18,000 for hospitality businesses, accommodation, leisure, personal care and gym or sport business premises. We will send out details on how to apply via our South and Vale Business Support newsletter, and applications will be open until 30 June 2021. www.svbs.co.uk

Test and Trace £500 payments

The government recently expanded the scheme – it now includes eligible parents and guardians who lose income if their kids are sent home from school due to positive cases among students or staff. A revised application form will be available on our website soon.

Town and parish forum

I'm very pleased that this year's event for towns and parish councils will be on the climate emergency: **'Climate Action – how can we take action together?'**. The event will be an opportunity to hear about the climate action work in South Oxfordshire, to feed back on the themes of the Council's draft Climate Action Plan, and to discuss how we can work with our communities to meet our climate targets. Attendees will also hear about biodiversity and nature work in our communities.

Robin.Bennett@southoxon.gov.uk
tel. 01865 858680
m. 07979 646815

Bell Motors

Behind H Cafe at the Berinsfield roundabout

MOT's while you wait

£15 discount on MOT's when you quote this advert

On site MOT bay and Workshops.

All makes and models catered for

Need a service give us a call.

Electronic diagnostics:~ engine management, ABS, air bags all undertaken.

Need a SERVICE. (**10 % discount** when you quote this advert)

We supply and fit exhausts, brakes, batteries

We will carry out any MOT work required. (tyres and air con please call for quote)

**Free collection of your vehicle,
or we will take you home and collect you upon completion.**

We will come out for breakdowns/recovery as needed.

Welding, you break it we will try and repair it, and not just your car!!

Garden machinery not starting we may be able to help?

All credit and debit cards welcome.

**MOT's 01865 341039
WORKSHOP 01865 341155
MOBILE 07931970392**

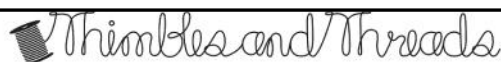
FOR A BEAUTIFUL GARDEN

Choose from our wide range of quality garden services: design and construction, plants and maintenance. We tailor-make our service for you.

For a free, no-obligation visit and written estimate from RHS qualified staff, call **01865 891634**,

or email info@brannfordsgardens.co.uk

Full details at www.brannfordsgardens.co.uk



Bespoke Curtains and Blinds

Based locally I am able to make and/or supply:

- Quality handmade curtains, roman blinds & cushions
 - A huge selection of fabrics
 - Pelmet & Headboards
 - Poles and curtain tracks
- Roller, vertical & venetian blinds
 - Plantation Shutters
- Bed valances & Bespoke lampshades
- Full professional measure and fit offered

Enquiries welcome please call Sharene on 07811 296 454 for a free initial consultation

Email info@thimblesandthreads.co.uk

www.thimblesandthreads.co.uk

St Mary's Dental Practice

Dr Ash Ratti (BDS Hons) Kings College London
www.stmarysdental.co.uk

21a St Mary's Street
Wallingford Oxon OX10 0EW
Tel **01491 825252**

We are a family orientated Practice located in the centre of Wallingford providing care and consideration from all members of my team to help provide you with all aspects of your dental requirements.

For further information, or make an appointment, please call my Receptionist on **01491 825252**

STEVE WILKINSON & SON

Est 1990

Property maintenance in
Dorchester area

**Painting: Interior and Exterior,
Plastering, Stonework,
Patios, Repointing brick & stone,
Fencing.**

**Telephone: 01865 891554
Mobile: 07885 538514**



Jenks Oxford are based here in Dorchester and so are convenient for all your tree needs.

Ask for a free site consultation and quotation on our full range of general and specialist services from our qualified professional staff.

Tree felling & removal - Pruning - Tree surveys - Diseased or unstable trees - Stump removal - Hedge cutting... and much more, just ask, and with £10 million public liability insurance for peace of mind.



**FREEPHONE
0800 458 3328**
info@jenksgroup.co.uk www.jenksgroup.co.uk

Proud to sponsor **FOOTSTEPS**
and DOT Under 10's football team

County Council approved. Arboricultural Association Approved. NPTC & Lantra Qualified. **WHICH?** Approved.

Better Broadband' Delivery Completed Across Oxfordshire!

'The Digital Infrastructure team are delighted to confirm that our 'Better Broadband for Oxfordshire' programme has completed its rollout of superfast broadband across Oxfordshire! Whilst we are underway with additional projects to deliver full fibre broadband across the county, this briefing summarises the key successes of 'Better Broadband.'

Background of 'Better Broadband for Oxfordshire.'

Better Broadband was initiated in 2013 as a partnership between Oxfordshire County Council, BT Digital, and Department for Digital, Culture, Media and Sport, with the objective of providing superfast broadband to 64,500 premises in Oxfordshire by 2015 to reach 90% coverage.

Phase two then evolved, and by the end of 2017 coverage had extended to 95% with a further 11,000 premises enabled due to co-funding from various sources.

At the end of 2018 the final phase commenced with coverage extended to a further 2,400 premises, raising coverage to 98% across the county. This phase was funded entirely by contract savings achieved to date and from £2.56m of gainshare funding received from BT due to the high take-up of superfast broadband.

The Digital Infrastructure Programme (previously known as Better Broadband) is a partnership of Oxfordshire County Council, Oxford City Council, local and district councils and local enterprises.

What Sort of Connection Speeds Can I Access?

Fibre-to-the-Cabinet (FTTC) can provide you with speeds up to 80Mbps, dependent on the distance of your property from the new fibre cabinet. The closer you are to the cabinet, the higher your connection speed will be. In some cases Openreach has further upgraded the infrastructure with a technology called Gfast, which offers speeds up to 330Mbps. If you are in a Fibre-to-the-Premise (FTTP) enabled area, you could benefit from ultrafast connection speeds up to 1000Mbps. FTTP provides a fibre optic connection all the way from the telephone exchange to your premises and offers lightning speeds to improve the performance of your internet connection.

How Do I Place an Order?

Please note that you will not be automatically upgraded to fibre-enabled broadband! When superfast / ultrafast / gigabit broadband is available, you will need to contact your chosen Internet Service Provider (ISP) to request an upgrade or use a comparison website to find the best package available to suit your needs. There is also a list available on the Openreach website showing FTTC and FTTP Internet Service Providers:
FTTC: www.openreach.com/fibre-broadband/fttc-providers
FTTP: www.openreach.com/fibre-broadband/fttp-providers

Do remember to check the terms and conditions carefully with your existing Internet Service Provider as there may be cancellation charges if you switch supplier.

Coverage Statistics for Dorchester Parish Council

Broadband Speed Bands	Outcome
Total <15Mbps premises	0
Total 15-23.9Mbps premises	0
Total superfast premises (>24Mbps) but <30Mbps	22
Total superfast premises (>30Mbps) Including FTTP premises	499 35
Percentage of premises in the parish with superfast (>24Mbps) coverage in 2020	100.00
Number of premises planned for delivery under BiRO	10

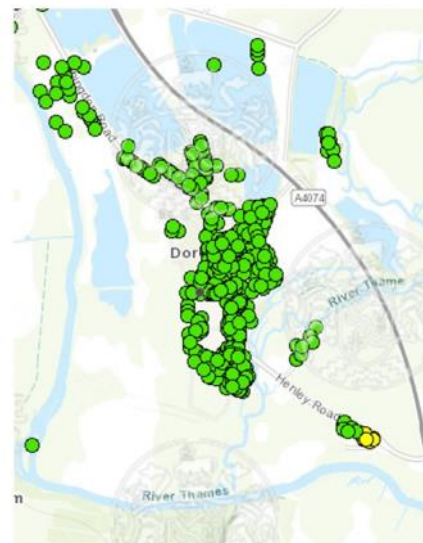
FTTP – Fibre-to-the-Premise

BiRO – 'Businesses in Rural Oxfordshire' Project

Interactive Map of connections Dorchester on Thames 11 April 2021

Green has superfast available (24 Mbps or more),
Yellow are in plan for delivery,

<https://digitalinfrastructureoxfordshire.co.uk/progress-so-far/coverage-map>
11 April 2021



BRYANS LOCK SERVICES

Phone: 01865 340138. 01491 520820.
01235 420742

Locks Supplied-Fitted-Serviced-Opened-Replaced for
Timber- Aluminium- Steel, PVCu doors & windows.
Keys cut to pattern.

Keys to number for office furniture.
Supply Safes, Document & Media Cabinets & Files
Locks to Insurance Company Specifications.

Master Locksmiths Association Approved Company.
Reg. No. 002623



Professional Building Advice

Home Surveys • RICS Regulated • Local Oxfordshire Based
Advice on renovation work, extensions and building defects
Construction Project Management
Chartered Surveyors 30 yrs experience

Mark G Bristow MRICS, MAPM, Cert Mgt BSc Hons
M 07912 476 636 T 01865 340 286
info@markbristow.co.uk



Gardening Service
by RHS qualified female gardener
Garden design / Plans / Landscaping / Planting
Demonstrations / Consultations / Pruning / beds and borders...

Call 07814 691040

email: sundaycarrigan@gmail.com
www.gracefulgardens.vpweb.co.uk

Quotations by appointment References available
Wallingford and surrounding villages covered

HOWARD CHADWICK FUNERAL SERVICE

A caring family owned and managed Funeral Service

- Dedicated Private Chapel of Rest •
- Golden Charter Pre-Paid Funeral Plans •
- Specialists in Memorial Stones and Designs •

Benson Lane, Crowmarsh Gifford
Wallingford OX10 8ED

Tel: 01491 825222

www.chadwickfuneralservice.co.uk



JOHN L. FISHER

CARPENTRY,
FITTED WARDROBES,
BOOKCASES & OFFICES

01865 343511
07860 505447
johnfisher19@icloud.com

The Acupuncture Barn

Acupuncture for Families

Appointments now available for:

Acupuncture, Facial Acupuncture, Moxa and
Cupping treatments

Chinese Medicine 5-Elements approach to treating you as a whole
Body, Mind & Spirit

Licensed Treatment Room:

High Street, Chalgrove, OX44 7ST

07879 403800

acupuncturebarn.co.uk



Flexible times by appointment



SAAC Member



Logs for Sale

Martin Drew

01865 343378 or 07774 170727



T.W Hayden Heating Services

Tel: 01865340720

Mobile: 07813904055

E-mail: Twhayden@tiscali.co.uk

All plumbing and heating works undertaken.
Free estimates.

**15 Fane Drive, Berinsfield,
Wallingford, Oxford, OX10 7NB**



Wallingford Museum News

Wallingford Museum is now actively planning for new openings and activities.

All planning is subject to government guidelines for Covid-19 prevention, please check the web site for confirmation www.wallingfordmuseum.org.uk in all cases.

Museum Bookshop

The good news is that the bookshop will open from **Friday 16 April 2021**.

We have an excellent selection of good second-hand books (both fiction and non-fiction) at sensible prices. We'll be open from then every Friday from 10.30 to 3.00, and every Saturday from 10.30 to 1.00.

We look forward to seeing you - it's free to browse!

Town and Castle guided tours

Wallingford Museum's experienced team will take bookings only for historical tours of the town or castle starting from April 12th - with social distancing in place throughout and any other necessary precautions. (Please read the essential guidance on the web site before booking)

To Book a tour

- All bookings are via email: pburton6@talktalk.net or via the website
- Request a day and time to suit you and we will do our best to arrange it.
- Request either a Town or a Castle walk.
- You will be contacted by email to confirm or adjust arrangements.

Arrangements

- Tours will meet beneath the Town Hall in Wallingford Market Place.
- You will be in a group of no more than 6 people (incl Guide) on any tour.
- Cost is £10 per head, for a tour lasting between 90-120 mins.
- Payment must be made in cash on the day.
- Exact money must be handed to the guide in an open envelope on which you have written a name and phone number for each participant, to allow compliance for Track and Trace. We shall look forward to hearing from you.
- For General Museum enquiries please contact the curator on **01491 651127**

www.wallingfordmuseum.org.uk

Museum Opening

We anticipate that the new scale model of Wallingford Castle will be on view in the museum from June.

In the meantime we invite you to browse the new Wallingford Museum web site:

www.wallingfordmuseum.org.uk to discover more about the model and the castle by checking out our video clips, some filmed on the site of Wallingford Castle.



The Wallingford Historical and Archaeological Society

Zoom talks for members

Please see the web site for further details:

www.twhas.org.uk/meetings-programme.html

12 May (Weds)

Richard Oram: update on local archaeology

9 June (Weds)

Elizabeth Popescu: *'Excavation of the cemetery of St Augustine's, Stoke Quay, Ipswich'*

Featured in recent Current Archaeology magazine.

14 July (Weds)

Steve Capel-Davies: *'The River Thames - How it Shaped our Region'*

18 April 2021 marks the Museum's 40th anniversary, entirely created and run by volunteers since 1981. What an achievement!

Have a browse on the website to discover the museum going from strength to strength.

www.wallingfordmuseum.org.uk



Wallingford Garden Club News

During the Covid epidemic WGC has not disappeared! We have not been able to meet but as you would guess like many, we have been active in our gardens tending and nurturing them despite the always changing weather conditions.

Our first club activity of 2021 will be our annual **Plant Sale Saturday 8 May 2021 from 09.30 to 12.30** in the Wallingford Town Square. (With Covid compliance)

Our members are and have been busy sowing and propagating a wide range of flowers and vegetable plants, feel free to come and browse.

Keep an eye on our web site (www.wallingford-gardening-club.com) and Facebook (Wallingford Gardening Club South Oxford) for news of our summer garden visits which will enable us to meet safely and re-establish those friendly links.

You can also find useful gardening tips and information on these sites.

We are happy to answer your gardening questions by email gardenswallingford@gmail.com



A choir of crocuses!

Day by day

Sun 8.00am
2 May Holy Communion (1662) *

Wed Parish Council Meeting
5 May 7.30pm
On line

DADS
Play reading
On line

Thurs Local Elections
6 May 7.00am-10.00pm
Village Hall

Sun 8.00am
9 May Holy Communion (1662) *

Sat Oxfordshire Art weeks
May 15 12noon to 5.00pm
Various addresses (see page 9)

Sun 8.00am
16 May Holy Communion (1662) *

Oxfordshire Art weeks
12noon to 5.00pm
Various addresses (see page 9)

Thurs Oxfordshire Art weeks
20 May 12noon to 5.00pm
Various addresses (see page 9)

Fri Oxfordshire Art weeks
21 May 12noon to 5.00pm
Various addresses (see page 9)

Weekly events at the Village Hall

See
[dorchesteronthamesvillagehall.org.uk/
#calendar](http://dorchesteronthamesvillagehall.org.uk/#calendar)
for forthcoming events.



Sat Oxfordshire Art weeks
22 May 12noon to 5.00pm
Various addresses (see page 9)

Abbey Museum
Reopens
2.00-5.00pm

Orchestra of St Johns
Concert
6.00pm and 8.00pm
Dorchester Abbey

Sun 8.00am
23 May Holy Communion (1662) *

Oxfordshire Art weeks
12noon to 5.00pm
Various addresses (see page 9)

Abbey Museum
Open
2.00-5.00pm

Thurs DADS
27 May Play reading
On line

Sun 8.00am
30 May Holy Communion (1662) *

* For current information about other services
at Dorchester Abbey see
www.dorchester-abbey.org.uk

For St Birinus RC Church go to:
www.stbirinus.co.uk

Parish Registers

Funerals

24 March John Orlando Bridgman

Weekly events

Tuesday Coffee Morning
10.30am
Online

Wednesday Mobile Post Office
2.00-3.00pm but may vary due to
Covid 19
Outside Co-op

See also the Parish Council's website:
www.dorchesteronthames.co.uk

GOING FORWARD BUSES	
SERVICES FROM DORCHESTER VILLAGE	
Mondays from 12th April 2021	
Towards Didcot	
WALLINGFORD, Market Place	09:45
Shillingford Hill Home Park	09:48
Dorchester War Memorial	09:53
Long Wittenham, The Plough	10:05
DIDCOT Tesco (for B&M/Halfords)	10:08
DIDCOT Aldi	10:09
DIDCOT Broadway	10:11
DIDCOT Parkway Station E4	10:19
DIDCOT Orchard Centre Taxi Rank	10:23
From Didcot	
DIDCOT Tesco (for B&M/Halfords)	12:00
DIDCOT Broadway	12:02
DIDCOT Parkway Station E4	12:06
DIDCOT Orchard Centre Taxi Rank	12:08
DIDCOT Aldi	12:09
Long Wittenham, The Plough	12:15
Dorchester War Memorial	12:26
Shillingford Hill Home Park	12:32
WALLINGFORD, Market Place	12:40
Wednesdays from 7th April 2021	
Towards Wallingford	
Berinsfield Health Centre	09:45
Dorchester War Memorial	09:50
Shillingford Hill Home Park	09:56
WALLINGFORD, Market Place	10:05
From Wallingford	
WALLINGFORD, Market Place	12:00
Shillingford Hill Home Park	12:03
Dorchester War Memorial	12:08
Berinsfield Health Centre	12:15
WALLINGFORD, Market Place	12:30

For the Friday 'Dorchester Flyer'
times, see page 13

BODY CONTROL PILATES®

BCP level 3 certified teacher specialising in back & joint care,
sports rehab, pre & post natal and
Parkinsons Disease
Beginners and Mixed Ability Classes in Benson
and Dorchester On Thames
121 sessions available for personalised
programmes

To book contact Claire on 07801 298 978
www.millstreampilates.co.uk
claire@millstreampilates.co.uk



CHIMNEY SWEEPING COMPANY LTD

★ NO FUSS ★
★ NO MESS ★
★ NO PROBLEM ★

Oxford
Stadhampton
Deddington
Mobile

01865 772 996
01865 400244
01869 337500
07711 443050

CONTACTING THE POLICE

To report a non-emergency crime, or to give information to Thames Valley Police, call **101**. Alternatively, call Crimestoppers anonymously on **0800 555111**. In the event of an emergency dial **999**.

HEALTH SERVICES

DIRECT LINE TO URGENT LOCAL HEALTH SERVICES

Dial **111** to access urgent local NHS health care services. Where possible, they will book you an appointment or transfer you to the people you need to speak to or send an ambulance if they think you need one. For non-urgent health needs you should contact your GP in the usual way.

MINOR INJURIES

The Minor Injuries Unit at Abingdon Hospital, Marcham Road, daily from 10.00 am to 10.30 pm: **01865 903476**.

A&E

The nearest A&E units are at the John Radcliffe Hospital in Oxford (**01865 741166**) and the Royal Berkshire in Reading (**01183 225111**).

SURGERIES

Berinsfield Health Centre: **01865 340558**
Clifton Hampden: **01865 407888**
Millstream Benson: **01491 838286**

ROOM HIRE

ABBEY GUEST HOUSE BOOKINGS

To hire the Abbey Guest House for private functions, meetings, exhibitions, etc, contact Kate Herbert on **01865 340007**, email admin2@dorchester-abbey.org.uk

HIRE OF DORCHESTER VILLAGE HALL

To hire our Village Hall, contact Emma Shrimpton bookings@dotvh.org.uk or **01865 689452**.

Please telephone at least 24 hours in advance to arrange collection of the key.

FAULTS AND COMPLAINTS

POTHOLE, STREET OR ROAD PROBLEMS

Abandoned vehicles, dog fouling, flyposting or graffiti, flytipping or litter, street cleaning, such as broken glass in a cycle lane, unlit lampposts, potholes can be reported on fixmystreet.oxfordshire.gov.uk. In an emergency, call **0345 310 1111**.

BLOCKED DRAINS

Ring Thames Water for blocked drains on **0800 316 9800**. Callers will be asked for the postcode of the address where the drains are blocked.

REFUSE COLLECTION

If your rubbish is not collected on the due date contact the contractor direct. Call **03000 610610** and the website: www.morerecycling.co.uk

POWER CUTS

If you suffer a power cut call **105** to get National Grid who will put you through to the network operator.

BERINSFIELD LIBRARY

Green Furlong, Berinsfield **01865 340771**
Free Internet access. DVDs can be ordered.

OPENING HOURS

Mon - closed
Tues, Wed, Fri 10.00am -12.30pm
Tues 2.00-5.00pm
Weds, Thurs 2.00-5.00pm
Fri 2.00-5.00pm
Sat 10.00am - 12.30pm

ANIMAL WELFARE

RSPCA (wildlife): **0300 123 0206**
St Tiggywinkles animal rescue: **01844 292292**
Swan Lifeline: **01753 859397**

Useful Information

TRANSPORT

DORCHESTER FLYER

See pages 9 and 30.

OTHER BUS SERVICES

Services X38, X39 X40 go every 20 minutes from the bypass at the end of Drayton Road to Oxford and Wallingford. Information about bus services, both local and national, is available from www.traveline.info, and **0871 200 2233**. Reduced services currently being run.

AGE UK

The UK's largest charity working with older people For help and advice etc. go to www.ageuk.org.uk

WALLINGFORD VOLUNTEER CENTRE

WVC Volunteers provide help for the elderly, disabled or vulnerable, especially by giving lifts to medical appointments at hospitals in Oxford, Abingdon and Reading. You need to register as a client. Contact the Centre for more information. **01491 836345**

www.wallingford.volunteercentre@gmail.com

CONTACTING THE PARISH COUNCIL

The Parish Clerk is Geoffrey Russell of The Pigeons (next to The Fleur de Lys), High Street, Dorchester on Thames OX10 7HH; **07745 311439** (during normal office hours, please, unless an emergency); parishclerk@dorchesteronthames.co.uk.

MOBILE POST OFFICE

The Mobile Post office stops outside the Co-op every Wednesday between 2.00 and 3.00pm but may vary

RAF BENSON

For information on flying schedules and night flying, www.raf.mod.uk/our-organisation/stations/raf-benson/documents/raf-benson-flying-programme/.

USEFUL CONTACTS

ANGLICAN PRIEST

Dorchester Rectory
Revd. Canon Sue Booy
01865 340007

ABBEY E-MAIL:

admin@dorchester-abbey.org.uk

Contact details for Church Wardens and other Abbey information are on the notice board in the Abbey.

ABBEY WEBSITE

www.dorchester-abbey.org.uk

VILLAGE WEBSITE

www.dorchesteronthames.co.uk

ROMAN CATHOLIC PRIEST

The Presbytery
Fr. John Osman
Bridge End
01865 340417
www.stbirinus.co.uk

Dorchester Abbey Museum E-mail
museum@dorchester-abbey.org.uk



REFUSE COLLECTIONS

Sat 8 May **Green**

Fri 14 May **Black**

Fri 21 May **Green***

Fri 28 May **Black**

Green* : Plus extra garden waste for brown bin customers

Weekdays from 7.00am


Saturdays from 6.00am

Weekly: food waste (in bio-degradable starch-based bag or wrapped in newspaper, in green caddy).

The recycling centre at Oakley Wood (off the A4130) is open 8.00am - 5.00pm seven days a week. Check website www.oxford.gov.uk/

Index of advertisers

	Page
Acupuncture Barn	28
AKT Planning	6
Arbocare	20
B H Lee	8
Bell Motors	26
Bluebird Care	20
Brannfords Garden Makers	26
Bristow	28
Bryan's Locks	27
Culham Garden Services	23
Diana Page	8
Dorchester Fireplaces	8
Dorchester Tennis Club	10
Dorchester Window cleaning	28
Four Winds	24
Full Circle	12
Graceful Gardens	28
Horted	8
Howard Chadwick Funerals	28
In House	6
JEM chimney sweep	30
Jenks	26
John L Fisher	28
Larkmead Vets	24
LB Plumbing	23
Martin Drew Logs	28
Millstream Pilates	30
Purely Plants	6
Q Self storage	12
Roy Passey Builders	6
St Mary's Dental	26
Steve Wilkinson	26
T W Hayden	28
The Landscape Group	
Oxford	24
Thimbles and Threads	26
Wallingford Tiles and	
Bathrooms	6
White Hart	20
Will O'Leary	23



Glazunov
Intermezzo Romantico
Faure
Four Songs
Coleridge-Taylor
Danse Negre
Wagner
Siegfried Idyll

Ilona Domnich

Orchestra of St John's
at Dorchester Abbey

Saturday 22 May
6pm and 8pm

osj

Tickets £15
osj.org.uk