

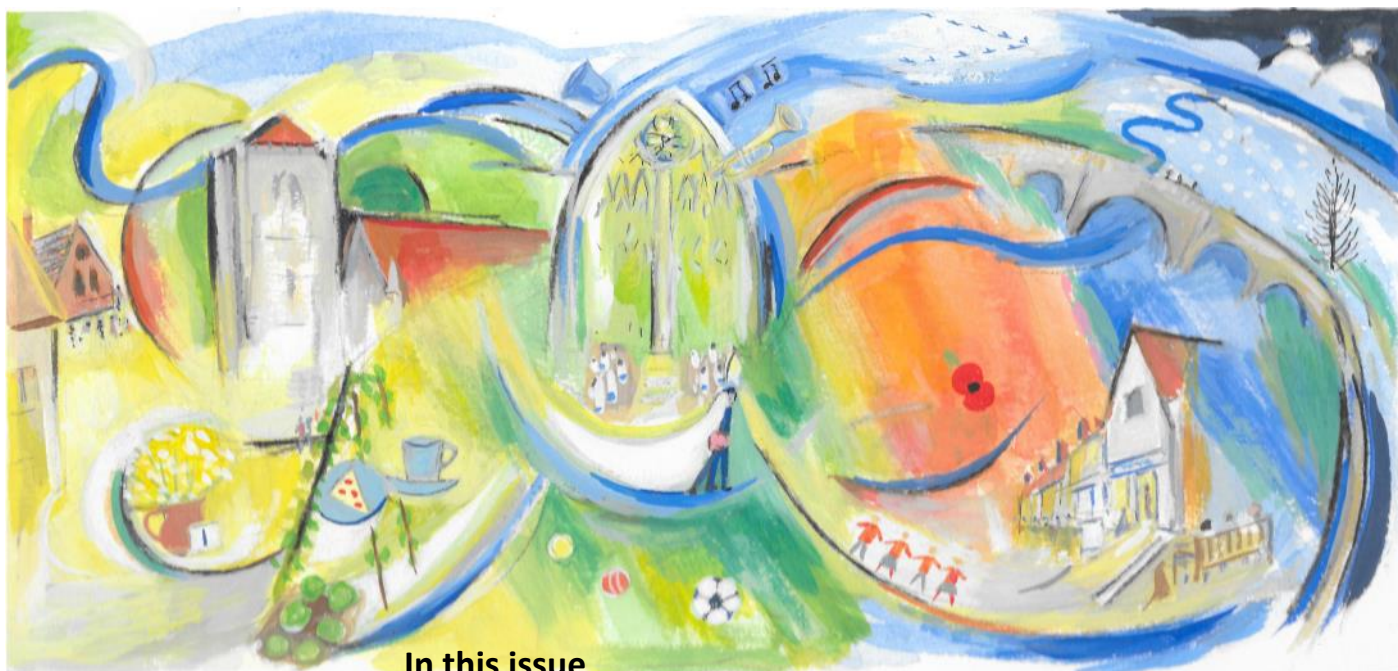
# ***Dorchester News***

*Free to every home in the parish*

*July/August 2019*

---





## In this issue

### **Dorchester Abbey**

|                         |    |
|-------------------------|----|
| Comings and goings      | 3  |
| Confirmation            | 3  |
| Harvest                 | 3  |
| Morning Service 1 Sept  | 3  |
| Morning Service 4 Aug   | 3  |
| Talking Point           | 3  |
| Heavenly Angels return  | 4  |
| Ride and Stride         | 14 |
| Items wanted for Narnia | 23 |

### **Clubs, Societies and Sports**

|                      |    |
|----------------------|----|
| Hempcroft Allotments | 4  |
| Hurst Water Meadow   | 7  |
| DADS Pantomime       | 14 |
| Dorchester Cricket   | 14 |

### **Village news/articles**

|                          |    |
|--------------------------|----|
| Key found in Hurst       | 4  |
| Professor Malcolm Airs   | 4  |
| Dorchester Gardens (NGS) | 8  |
| Home Library Service     | 8  |
| Kingdom of Wessex Trail  | 9  |
| Autumn Flower Show       | 11 |

### **Festival**

|                      |       |
|----------------------|-------|
| Festival Thank You   | 16    |
| Fun Run Winners      | 17    |
| Style Acre Thank You | 17    |
| Romeo and Juliet     | 18,19 |

### **Art and Entertainment**

|           |    |
|-----------|----|
| Henge     | 4  |
| Crossword | 24 |

### **Schools and education**

|                        |   |
|------------------------|---|
| Pre-School             | 5 |
| St Birinus School      | 5 |
| Summer Concert         | 5 |
| Pre-school summer fete | 8 |

### **Tributes**

|                        |    |
|------------------------|----|
| Irene Mary Osborn-King | 13 |
| John Mills             | 15 |
| Meg Tapley             | 22 |
| Muriel Ann Hill        | 23 |

### **Local and national government**

|   |    |
|---|----|
| Councillor Chris Hill                   | 20 |
| From the Chairman of the Parish Council | 25 |
| Parish Council                          | 25 |
| From your District Councillor           | 27 |
| From your MP                            | 29 |

### **Community**

|            |    |
|------------|----|
| Speedwatch | 25 |
|------------|----|

### **Wallingford**

|                            |    |
|----------------------------|----|
| Corn Exchange              | 31 |
| Wallingford Historical Soc | 32 |
| Wallingford Museum         | 32 |
| Wallingford U3A            | 32 |

### **Advertising**

|                                |    |
|--------------------------------|----|
| Advertising in Dorchester News | 28 |
| Index of advertisers           | 35 |

Cover picture: A summer rainbow over the Thames by David Wilkinson

## **DoT view**

Writing this in mid-June it seems that we have not had a day without rain for weeks. How fitting then is the marvellous cover photograph by David Wilkinson of the double rainbow over the Thames in a summer storm.

Let us hope that the weather improves for July and August and we can at least get a taste of summer.

There is still plenty going on. The Historical Society will welcome good weather for their visit to Salisbury on 6 July, and the Pre-School Summer Fete on 13 July would love, I am sure, to have a beautiful sunny day for their fun and games.

Should it continue to rain, then indoors there is what promises to be a delightful concert put on by the staff and parents, past and present, of St Birinus School, in Dorchester Abbey on 23 July. Proceeds from this will go to help music-making in the school, so well worth supporting.

Or you can get along to the auditions for the DADS pantomime, to be presented in November. What fun that promises to be. It doesn't matter what age you are. Even if you think your future is behind you, oh no it isn't.

But most of all we want good weather to get our plants to their prime for the Autumn Flower Show in September. Imagine, already thinking about that!

**Ian Brace**

### **Editorial Team**

Ian Brace, Gail Thomas

### **Distribution Co-ordinator**

Maurice Day

### **Printed by**

Artisan Print Solutions

## **Deadline for September Dorchester News**



email:

[dorchesternews@dorchesteronthames.co.uk](mailto:dorchesternews@dorchesteronthames.co.uk)



Plastic!

In the early 1980s we always seemed to have a sack of plastic milk bottles on our doorstep! If you know me you might think I was collecting for some kind of craft activity—I wasn't! In fact we collected plastic bottles as part of an early experiment into plastic recycling. Once we let it be known that we were interested in collecting bottles for this purpose there was a constant—almost overwhelming supply on our doorstep.

Although we didn't then have the full picture of the appalling damage plastic was wreaking on our planet we were seriously concerned about overproduction and the problem of disposal. This early project proved and developed the ability to recycle plastic. In the 1980s little plastic was recycled and I can remember the excitement of seeing products made from recycled plastic for the first time and the gradual introduction of labelling for recycling. Today recycling at some level is part of 'normal' for the majority

of households and is an important part of our care for the environment. We are a long way from getting plastic right but greater awareness, paying attention to the small things, not using plastic unless you have to and being well informed are all important environmental steps that anyone can take. Did you know for example that 'non' recyclable black trays used for food packaging are usually made of plastic that has been recycled more than once?

Care for the environment makes sense—practically it represents our best hope for the future and spiritually it affirms the value of creation and is a way of giving thanks to the Creator. The Church of England is part of the move to value creation throughout the country—nationally, as leaders in the challenge to the oil industry and locally in churches where people are joining campaigns, installing solar panels, turning lights off or down and switching away from plastic whenever possible.

#### *Talking about environmental issues*

At the Festival Service we were privileged to hear from a number of younger members of the community around the subject of the Environment and Climate Change – much more careful use of our resources is all part of this whole. For members of the worldwide Anglican Church care for the environment and creation is the fifth mark of mission. I plan to hold a 'Talking it through' evening on these issues in the near future – please let me know if you would like an invitation.

### Morning Service

#### Sunday 4 Aug

The story behind some favourite hymns ...The Rector will explore the background stories to some well-known hymns – if you would like to nominate a hymn please get in touch

### Morning Service

#### Sunday 1 Sept

We shall be delighted to welcome Canon Maranda St John Nicolle. Maranda is the Christian Concern for One World officer in the Diocese which includes holding the 'Environment' brief. She is also the Secretary to the Diocesan Link Committee and knows a great deal about our 'Burning Bush' project and has visited more recently than any of us.

### Confirmation

The Right Reverend Humphrey Southern, the Principal of Cuddesdon will join us for a Team Service on **29 September** at 4.00pm in the Abbey during which there will be a Confirmation. If you would like to consider being confirmed please speak to the Rector or any of the other clergy.

### Harvest

Please look out for details of the annual Harvest Celebrations in Church in the September Dorchester News.

### Comings and Goings...

In the Dorchester Team. I am delighted to report that we have appointed a new Team Vicar who will work mostly in Berinsfield, Drayton St Leonard and the Baldons. The Reverend Teresa Stewart-Sykes is currently working in the 'other' Dorchester Team and we look forward to her joining us in the Autumn. Sadly Michael Lakey will leave the Bridge Group of parishes for Chalgrove – a great move for him and the family – we wish them well! Jon Roberts and Jennifer Morton have completed their curacies – this means that Jon now has to look for a move to a non Curate role and Jennifer was Licensed to serve in the Dorchester Team on Wednesday 12 June.



Reverend Jennifer Morton with the Bishop of Dorchester

## Congratulations Professor Malcolm Airs OBE

Congratulations to Professor Malcolm Airs of High Street, Dorchester, and occasional contributor to Dorchester News, who was appointed an Officer of the Most Excellent Order of the British Empire (OBE) in the Queen's Birthday Honours List in June. It has been awarded for 'services to the historic environment, to conservation and to education.'

Geoff Russell on behalf of the Parish Council adds: 'Over a considerable period, the Parish Council has been fortunate to have the benefit of advice from Professor Airs based upon his accumulated knowledge and many years of experience. He continues to make himself available to assist the Council and for this we are very grateful.'

## Key found in the Hurst



A key, with the number N121 on it, has been found in the Hurst. To claim it please contact Gillian Johnson **01865 340925**.

## Heavenly Host Angels return for 2019, Following the Star...

The much-loved Heavenly Host Angels will be returning to Dorchester this year, arriving in December. The project, begun in 2017, provides handmade angels for keen-eyed people to discover in the village and to place in their homes during the Advent and Christmas seasons.

This year's Angels will be signalling the 'Follow the Star' Advent initiative, which will be the Abbey's theme during Advent and Christmas.



If you have yarn to donate it would be most welcome. Please leave a message for Denise Line on **07596 524335**.

If you are a crafter there will be yarn and patterns available at the back of the Abbey for you to collect from September.

A date for your diary – **Sunday, 29 September**, 10.30 service at the Abbey will include the launch of Heavenly Host (Follow the Star) 2019.

Visit the Heavenly Host Facebook page for updates.

## HENGE

A sense of place



**Inspired by the ancient landscape  
surrounding Dorchester-on-Thames**

Artists, printmakers, photographers and painters.

Poetry, especially written and performed.

Installation, with a theatrical twist.

Music, specially composed and performed.

St Birinus School, workshops and exhibition.

Exhibitions and performance in the Guest House.

**Save These Dates:**

Installation and Performance, the Hurst Water Meadow :  
**Friday 20 September.**

Exhibition and Performance, the Guest House  
**Saturday 21, Sunday 22 September**

## Hempcroft Allotments July



### Diseases and pests

July is the start of the potato blight season and if the weather is wet and humid in July then your potato crop could be at risk. You can use fungicides containing copper to help protect growing crops from blight and spraying should be from June onwards if the weather still continues to be unsettled. Note that crop rotation the following year is advisable. An infected plot will have a watery rot on its leaves causing them to collapse. Infected material should not be composted and should be incinerated or removed from the site.

Pests such as aphids, cabbage white butterfly caterpillars and pea moth can also start to try to share your emerging produce with you. Spray to control aphids and pea moth with an insecticidal soap bought in the garden centre.

Talking of pests, the Association of Leisure Gardeners and Allotment Holders is now holding courses on the responsible and effective control of rodents. It appears that rats on allotments are a common problem across the country. Before we have to resort to poisoning and all the controls and difficulties that this entails we can do a few things to help such as never bringing household food waste on the allotments to put into compost bins and also maintaining a tidy plot.

**Ed Metcalfe**





## St Birinus Primary School News

The Year 6 children had a busy week taking their SATs. I would like to congratulate all the Year 6 children for their positivity throughout the week and their determination to do their best. We have also had a relaxed time by sharing breakfast together each morning, which is always a brilliant way to start the day (they certainly can eat!). I am proud of all them and have really enjoyed these sessions with them.

Farmer Gow's was the destination for Hedgehog class, they certainly couldn't have asked for better weather – which has not continued. All the children had a great time watching and feeding the animals as well as some egg hunting. A super day out!

Our annual Music Evening was held on just before half term, which is a great showcase for our musicians and gives them valuable experience performing in front of an audience. This year, the whole of Fox Class have been learning the violin so it was especially exciting to watch them perform—I was so impressed with how far they have come since September. Well done to all our musicians and thank you to their music teachers who work with the children to achieve their great performances especially Jill Lloyd (violin teacher) for supporting us on the night.

This year was our sponsored walk, which was a great day with the weather I had ordered especially. I was very impressed with the children's behaviour and determination to keep going, particularly the Foundation children who managed the whole walk this time with great enthusiasm. Well done everyone! Thank you to the PTA who met us with very welcome ice pops at the Dyke Hills. All we have to do now is to wait for the sponsor money to come in to see the total raised.

We welcomed Hugh Warwick in to school for an assembly to talk to us about hedgehogs – which linked to our sponsored walk and with World Environment Day. Thank you to Megan Bennett for organising this for us.

Don't forget the forthcoming musical concert with staff and parents performing in the Abbey on **23 July** – look out for the poster with this edition of the Dorchester News – I look forward to seeing you there.

**Russell Leigh**  
Headteacher  
Dorchester St Birinus  
CE Primary School

### Tuesday 23 July, 6.30pm in Dorchester Abbey A Summer Concert with a Difference



Do please support our Summer Concert in the Abbey. Performers will be known to you, we are all staff, parents and governors, past and present, of our village school. Many of us are bravely leaving our comfort zones! Performances will include classical, jazz and popular music, Indian dance and poetry reading. There will also be refreshments. Proceeds will support music within school.



With the half term holidays out of the way, we are now well into the final term of the school year and the final countdown has started for Freya, Isla, Paige, Raffaella, Blaise, Arthur, Benji, Rufus and Thomas who will be leaving Dorchester Pre-School to go to big school this September. We wish them all the best of luck!

A big thank you goes to all the staff for

making sure their time here was happy and enjoyable, and for preparing them for this milestone. I'm sure a few tears will be shed by parents on graduation day on the **16 July**.

We have welcomed two lovely new starters Finlay S and Finlay W who are revelling in all the fun activities, from arts and crafts to bird watching and everything else in-between.

## Pre School

We have some exciting fundraising planned, including taking over the Tea Room at the Abbey, and also a Summer Fete planned for **Saturday 13 July** (11.30am - 3.00pm) on the school grounds. The proceeds from both will be used for much needed improvements to the playground.

Please come along and support us, everyone is very welcome and there will be lots of fun activities on offer and hopefully some sunshine too.

The latest Managers Awards have been bestowed on Raffaella, Thomas and Rufus for both being incredibly kind and helpful at Preschool and working really hard in preparation for school in September. Well done all of you and keep it up!

Summer holidays officially commence on the **19 July** at 3.00pm. I'm sure we are all looking forward to that, especially the children and the staff who have earned a well deserved break.

With thanks to Helen, Zoe, Jess, Val and Elsa, our wonderful preschool staff.

**Lauren Collett**  
Secretary  
Dorchester Pre School





# Here to help you find and book the perfect holiday....



Arranging a holiday can be very frustrating and challenging. But with Full Circle Travel, it doesn't need to be.

- We are a local, independent travel agent with mature, professional and well-travelled consultants.
- You do not pay more for our service but get a lot more than booking direct.
- You can book with your favourite tour operator but book locally.
- We are ABTA and AITO members and ensure your money is safe in an uncertain world.
- We listen, we care and are passionate about finding you the perfect holiday.
- Search 'Full Circle Travel' at [www.trustpilot.co.uk](http://www.trustpilot.co.uk) to read what our clients say about us.

A selection of operators you can book with us at no extra cost to booking directly:

Club Med - Cox and Kings - Abercrombie and Kent - Mark Warner - Audley Travel - Explore - The Adventure Travel Company  
Royal Caribbean - Carrier - Western & Oriental - If Only - Beachcomber - Exodus - Kuoni - Viking River Cruises - Seabourn  
Riveria Travel - Silversea - Regent Seven Seas - Classic Collection - Prestige Holidays plus many more - please just ask.

Full Circle Travel, 59 St Marys Street, Wallingford, OX10 0EL

[www.fullcircletravel.co.uk](http://www.fullcircletravel.co.uk)

T: 01491 833227

E: [holiday@fullcircletravel.com](mailto:holiday@fullcircletravel.com)

## Keep it local, keep it In House.



Did you know In House is owned and run by a Dorchester resident, which is why we offer fellow residents a discounted selling or letting fee!

So if you are thinking of selling, letting or just value curious, call In House on

# 01491 839999

**In House...Your local property experts!**





# THE HURST WATER MEADOW TRUST

## WANTED: secure covered storage for Hurst equipment.

For many years the Hurst Water Meadow Trust has benefited from the use of Mrs Osborn-King's garage to house its lawn tractor, trailer and other equipment. She was very generous as the only obligation was to ensure that there were no spider webs in the windows. We now need to find a suitable alternative which is secure and dry.

## Does anyone have a suitable storage site, please?

We need housing for the lawn tractor in particular (at least 8 x 4 feet) and preferably for the trailer as well. A lockable unused garage where everything can be kept together would be ideal. We are happy to consider paying rent; or keeping spiders away from windows.

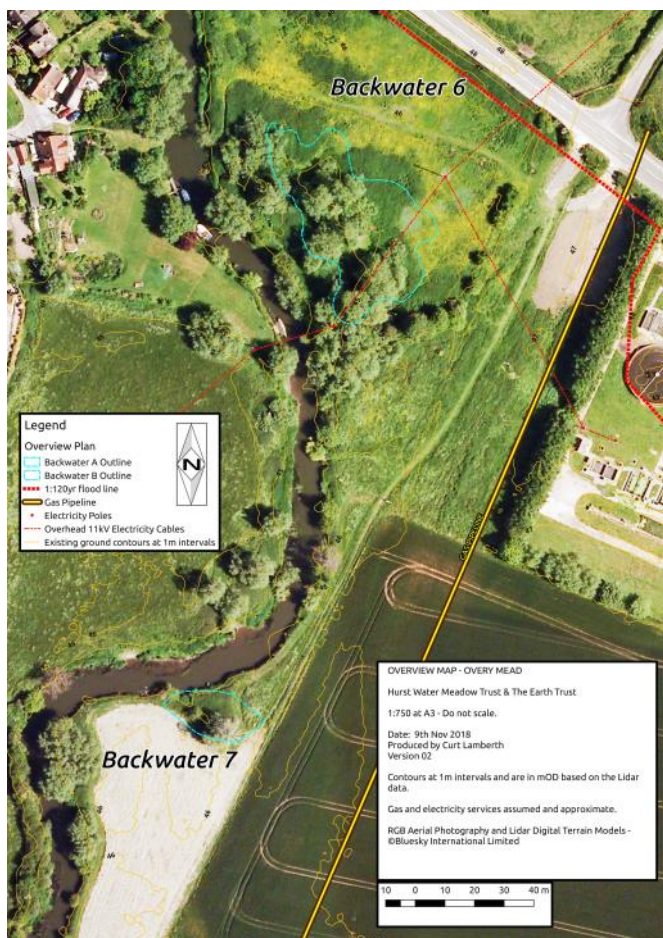
### Wetlands Project: River of Life II

In June's Dorchester News we announced the new River of Life II project, instigated by the Earth Trust and its partners, proposing new backwaters in Old Bridge Meadow and Overy Mead Piece.

These are the meadows beside the river Thame from Dorchester Bridge to the Thames confluence. The proposed wetland sites are shown on the aerial photograph as backwaters 6 and 7, outlined with turquoise dashes. Walkers in those meadows may have noticed a small auger rig being used to take sub-soil samples to map the local soil, geology and hydrology. Four locations were tested, revealing clayey sand with cobbles and pebbles which appear at 1m to 2m depth (see photo). This information will help to finalise the design of the backwaters and will support the planning application.

Trustee Shammy Puri, who is responsible for 'ecohydrology', will be pleased to explain the project in more detail to anyone who is interested. Please send any enquiries to Gillian who will pass them on to Shammy: [hurstwatermt@gmail.com](mailto:hurstwatermt@gmail.com) T.01865 340925. Or contact Ruby Glasspool, Earth Trust Communications Manager, [ruby.glasspool@earthtrust.org.uk](mailto:ruby.glasspool@earthtrust.org.uk), T.01865 409422.

**Gillian Johnson (Hon. Secretary)** 01865 340925  
**Richard Farrant (Chairman)** 01865 340923  
[hurst-water-meadow.org.uk](http://hurst-water-meadow.org.uk)



CHURCH  
FARM  
PARTNERSHIP



Hydro-Logic  
Services



The European Agricultural Fund  
for Rural Development:  
Europe investing in rural areas



# DORCHESTER PRE-SCHOOL SUMMER FETE

BBQ, Refreshments, Tea, Cakes  
Bouncy Castle  
Games  
Facepainting  
Stalls - Plants, Crafts, Usbourne books  
Raffle and Tombola

**Saturday 13th July 11.30 - 3pm**  
Dorchester Pre School, Queen St,  
Dorchester on Thames

Proceeds to Dorchester Pre School for  
improvements to our playground



## Home Library Service

Help for people who are unable to visit the library themselves

### How it works:

Through the help of volunteers we bring our library service to you at home.

- We will discuss your requirements and arrange for a volunteer to visit
- Volunteers wear identification badges and are DBS checked
- Your library materials will be delivered and collected every three weeks
- The service is offered to people of any age who are housebound and can't get to the library due to disability illness or full-time caring responsibilities
- This includes people who might need the service on a short-term basis following debilitating illness or hospitalisation.

The Home Library Service offers FREE of charge:

Fiction and non-fiction  
Books in Large Print  
Audio books on CD  
Music CDs  
DVDs

No charge for late returns or reservations

To register for this service or for further information:

- Call Berinsfield Library **01865 340771**
- E-mail berinsfield [library@oxfordshire.gov.uk](mailto:library@oxfordshire.gov.uk)



NATIONAL GARDEN SCHEME  
Gardens Open For Charity

## Dorchester Gardens

Dorchester-On-Thames,  
Wallingford,  
OX10 7HZ

26 Manor Farm Road • 6 Monks Close •  
7 Rotten Row

**Sunday 7 July**  
**2 - 5pm**

Combined entry £5 Children free



TEAS WHEELCHAIR ACCESS

More information at [ngs.org.uk](http://ngs.org.uk)

## BERINSFIELD LIBRARY

VISIT YOUR LOCAL LIBRARY AND SEE WHAT WE HAVE ON OFFER

### Space Chase

Get set to blast-off in our FREE reading challenge at  
your local library...

**13<sup>th</sup> July to 14<sup>th</sup> September**

**August 4<sup>th</sup> Face Painting afternoon 2.30pm**  
**August 28<sup>th</sup> Story and Craft afternoon 2.30pm**

Rhymes for the Under 5s  
Wednesdays 10.30am

Storytime Wednesdays 3.45pm  
IT Drop in Thursdays 2.00pm

Knit and Natter 2.30pm  
Tuesday 2<sup>nd</sup> July & 6<sup>th</sup> August

Reading Group 2.00pm  
Thursday 11<sup>th</sup> July & 8<sup>th</sup> August

Coffee Morning 10.30am  
Tuesday 16<sup>th</sup> July & 20<sup>th</sup> August

**All Welcome**

[www.oxfordshire.gov.uk/libraries](http://www.oxfordshire.gov.uk/libraries)



@OxonLibraries



OxfordshireLibraries



OXFORDSHIRE  
COUNTY COUNCIL



# The Kingdom of Wessex Trail

## Launching the Kingdom of Wessex Trail

### *Celebrating the untold Anglo-Saxon history of south Oxfordshire*

The early Anglo-Saxon period of history is not well-known, while the story of the birth of the Kingdom of England in the Upper Thames valley is virtually unknown even among local communities. The incredible discovery, in 2016, of a large Anglo-Saxon house, the House of Wessex, dating from the 7th century in Oxfordshire, on land owned by an environmental charity, provides a unique opportunity to reconstruct this building and tell this amazing story.

The Kingdom of Wessex Trail is a walking trail that enables people to follow in the footsteps of Anglo-Saxons. The walk, between Dorchester Abbey and Sutton Courtney via the Anglo-Saxon House, is in a landscape rich in Anglo-Saxon heritage. A leaflet provides information about the walk and highlights some of the key historic features. There is also a web page giving more detailed background to the untold Anglo-Saxon history of the area.

[sylva.org.uk/wessex](http://sylva.org.uk/wessex)

### **Open weekend 6 and 7 July, 10.00am-4.00pm**

Perfect for families, no entrance fee. Watch the final shaping of timbers with axes, and the raising of the building. A variety of traditional techniques will be used to carry the timbers to the site and raise the timber frame. Meet members of the Wulfheodenas — a living history society — and see Anglo-Saxon crafts, play traditional games, learn about bone-carving, cookery skills and much more. A specialist thatcher will provide demonstrations of traditional skills, and even

some breadmaking from the old wheat variety used to thatch the roof. It will be a great family-friendly weekend and a major milestone in the project. You can sign up as a volunteer, and during a one-day course you will receive training, and help with the reconstruction. Sylva Foundation is offering a range of one-day courses during July and August.

More information about the project and how to sign up to a course:

[sylva.org.uk/wessex](http://sylva.org.uk/wessex)



A beautiful 15<sup>th</sup> century coaching inn set in an idyllic location

We have a new chef and a new menu, offering a variety of exotic dishes and a traditional Sunday roast served with our signature Yorkshire pudding.

20% off ala carte menu at lunch times for senior citizens Monday to Saturday

We serve food Monday – Saturday 12-2.30pm and 6pm-9pm and Sunday 12-9pm



[www.georgehoteloxfordshire.co.uk](http://www.georgehoteloxfordshire.co.uk)

To reserve your table please call 01865 340404

Anderson Orr  
Architects



Contact us for a free and informal discussion about your project. Our offices are in Wheatley and Henley-on-Thames.

01865 873936

info@andersonorr.com

[www.andersonorr.com](http://www.andersonorr.com)



**Culham**  
Garden Services

Local, Reliable and Professional

James Rockall  
13 High Street  
Culham  
OX14 4NB

Available for all aspects of garden  
maintenance and clearance

Call: 07857383069

[james@culhamgardenservices.co.uk](mailto:james@culhamgardenservices.co.uk)

Regular maintenance. One-off services. Public liability insured.  
References available. Est.2012

## Emmanuel Christian School

*A diverse community  
full of life and learning  
on the edge of Oxford  
Quality affordable  
independent education  
for children aged 3 to 11*



Sandford Road,  
Littlemore, OX4 4PU  
(01865) 395236  
[ecschoo.co.uk](http://ecschoo.co.uk)

Ben Smith

Carpentry & Building

07803533163 01865 361171 07884103142

[Enquiries@bscarpentry.co.uk](mailto:Enquiries@bscarpentry.co.uk)

Carpentry, Joinery & Building Contractors

Suppliers & Installers of  
Windows, Doors & Conservatories

Purpose Made Joinery Products  
Kitchen Furniture

We undertake all building works,  
Including the design through to  
local authority approval if  
required.



References Available Upon Request



VAT REG NO:  
212 6529 30



## The White Hart

Dorchester on Thames

01865 340074



## Market Menu

Available Monday to Friday Lunchtime  
Early Dinner Weekdays 6pm-7pm

*Come along to the White Hart and enjoy a delicious two  
course menu for only £15 (three courses £18). This  
special menu is available Monday to Friday for early  
dining with orders taken before 7pm and at lunchtimes.*

(Restaurant Club discount not applicable)

[www.white-hart-hotel-dorchester.co.uk](http://www.white-hart-hotel-dorchester.co.uk)





## RULES

1. The Show is open to any person residing in Dorchester-on-Thames, Burcot, Drayton St Leonard and Berinsfield, or with a Dorchester allotment.

2. No exhibitor may exhibit more than one exhibit in each class, excepting Classes 21, 26 and 27, where three entries may be made.

3. The **number** of exhibits in Class 1 must be the same as in the corresponding class **where applicable** and **in a container**.

**4. All entry forms and fees to be submitted no later than 7.00 pm on the Wednesday evening before the show.**

5. All exhibits in classes 1-40 must have been grown by the exhibitor. All exhibits in classes 41-55 must be home produced by the exhibitor. All pot plants must have been owned for a minimum of 4 months.

6. Exhibitors must provide their own dishes, stands etc. Every care will be taken of the exhibits but the committee will not be held responsible for loss or damage.

7. On the relative merits of the exhibits, the opinion of the judges shall be final, but the committee reserves to itself the decision on any other points in dispute.

8. The Committee reserves the right to inspect any competitor's garden or allotment before or after the day of the show.

**9. All exhibits for competition must be staged between 9.00 am and 10.15 am on the day of the show.**

10. All competitors must leave their exhibits on show until after the Prize giving and raffle and **clear immediately afterwards**.

11. Any protests must be made in writing before 3.00 pm on the day of the Show.

12. Any exhibitor infringing any of these rules will be disqualified.

## DORCHESTER-ON-THAMES AUTUMN FLOWER SHOW

and  
**Plant Sale/Raffle**

in  
**DORCHESTER VILLAGE HALL**

on  
**Saturday 14th September 2019**

Staging 9.00 am -10.15 am

Viewing 2.30 pm - 4.00 pm

Raffle draw and  
presentation of prizes from 3.40 pm

Exhibitors will be competing for:  
The Amey Rose Bowl, The Rose Plate,  
The Amey Tankard, The Fruit Plate,  
The R Belcher Onion Cup,  
The Floral Art Cup, The Runner Bean Plate,  
The Britain in Bloom Cup, The Best Vegetable Award,  
Vegetable Collection Plate,  
The Best Kept Allotment, The Pat Cheese Potato Cup,  
Victoria Sandwich Award, The HC Smith Dahlia Cup,  
The Blackwell Photography Cup  
The Jerry Nudds Fruit Cake Plate and  
The Jenny Nudds Tomato Cup

### Section 1 - Vegetables

- 1) Collection of 4 different types of vegetables (see rule 3)
- 2) Potatoes 5 white
- 3) Potatoes 5 coloured
- 4) Carrots 3, foliage 3" max
- 5) Parsnips 3, foliage 3" max
- 6) Onions 5 from sets
- 7) Onions 5 from set/seed max 3" dia
- 8) Shallots 7
- 9) Beetroot 3
- 10) Runner Beans 5
- 11) Longest Runner Bean
- 12) French Beans 5
- 13) Any other beans 5
- 14) Marrow 1, fit for table (up to 12" long)
- 15) Peppers 2
- 16) Tomatoes 5
- 17) Tomatoes, Cherry type 7
- 18) Cucumbers 2
- 19) Courgettes 3 (4-6" long)
- 20) Herbs - 4 bunches in water (space 12"x12")
- 21) Any other vegetable (see rule 2)
- 22) Squash 2
- 23) A disaster vegetable

### Section 2 - Fruit

- 24) Apples, Cooking 5
- 25) Apples, Dessert 5
- 26) Berry Fruit (see rule 2)
- 27) Any other fruit (see rule 2)

### Section 3 - Flowers

- 28) Flowering plant in pot, pot not to exceed 8" diameter
- 29) Foliage plant in pot, pot max 8" dia
- 30) Dahlia - 1, 6" diameter and over
- 31) Dahlias - 3, 3" to 6" diameter
- 32) Rose - 1 bloom any type
- 33) Roses - 3 stems, one variety or mixed
- 34) Flowering shrub - 3 stems, one variety
- 35) Berried shrub, including hips - 3 stems, one variety
- 36) Michaelmas daisies - 3 stems
- 37) Annuals - 3 stems, one variety
- 38) Annuals - 5 stems, all different plant families
- 39) Biennials or Perennials - 3 stems, one variety
- 40) Biennials or Perennials - 5 stems, all different plant families

### Section 4 - Flower Arrangements

- 41) Bonfire Night (max 46x46x46cm/18x18x18")
- 42) Single colour arrangement, foliage allowed (max 20x20x20cm/8x8x8")

### Section - 5 Domestic

- 43) Bakewell Tart
- 44) Gentleman's Fruit Cake
- 45) Victoria sponge, caster sugar topping, jam filling
- 46) Granary loaf
- 47) Ginger biscuits - 5
- 48) Pot of Jam - sealed with plain screw top lid
- 49) Pot of Jelly, sweet or savoury - sealed with plain screw top lid

**Section 6 - Photography and Art** - All unmounted, not exhibited previously. Classes 50 & 51: Conventional or digital camera (*must not be manipulated or enhanced in any way*) Max 8" x 6"

- 50) 'The Hurst'
- 51) Subject beginning with "D"
- 52) Manipulated photograph, any subject - up to A4
- 53) An unframed painting or drawing - max dimension 46cm/18"

**Section 7 - Children** All own work please - state age on exhibit

- 54) Age 9 and over: A monster made from recycled materials
- 55) Age 8 and under: A monster made from recycled materials

### ENTRY FORM

Please return no later than **7.00 pm Wednesday, 11 Sept** to: Christina Stores, 55 High Street (post through letterbox please)

Class Nos .....

**Full name of Exhibitor** ..... Telephone no.....

Address..... Entry fee 10p per class.....

Email address (for Flower Show reminders and schedule only).....



## T.W Hayden Heating Services

Tel: 01865340720  
Mobile: 07813904055  
E-mail: [Twhayden@tiscali.co.uk](mailto:Twhayden@tiscali.co.uk)

All plumbing and heating works undertaken.  
Free estimates.

15 Fane Drive, Berinsfield,  
Wallingford, Oxford, OX10 7NB



Beauty Salon in Drayton St. Leonard, with plenty of free parking

I have over 10 years experience and specialise in manicures & pedicures, gel nails tanning, waxing, tinting and eyebrow treatments.

Hot stone massage, sports massage and acupuncture also available.

As a welcome treat, enjoy a complimentary file and polish.

I look forward to welcoming you!

**Paige**  
07584 665790  
[paige@willowcottagebeautycabin.co.uk](mailto:paige@willowcottagebeautycabin.co.uk)

## St Mary's Dental Practice

Dr Ash Ratti (BDS Hons) Kings College London  
[www.stmarysdental.co.uk](http://www.stmarysdental.co.uk)

21a St Mary's Street  
Wallingford Oxon OX10 0EW  
Tel 01491 825252

We are a family orientated Practice located in the centre of Wallingford providing care and consideration from all members of my team to help provide you with all aspects of your dental requirements.

For further information, or make an appointment, please call my Receptionist on 01491 825252

## FOR A BEAUTIFUL GARDEN

Choose from our wide range of quality garden services: design and construction, plants and maintenance. We tailor-make our service for you.

For a free, no-obligation visit and written estimate from RHS qualified staff, call **01865 891634**,

or email [info@brannfordsgardens.co.uk](mailto:info@brannfordsgardens.co.uk)  
Full details at [www.brannfordsgardens.co.uk](http://www.brannfordsgardens.co.uk)



T: 01865 890548

F: 01865 890198

E: [info@fourwindsgarage.com](mailto:info@fourwindsgarage.com)

## Local, Professional Vehicle Technicians

- MOT's
- Servicing
- Repairs
- Diagnostics
- Bodywork
- Welding
- Free collection and delivery
- All makes covered





## Irene Mary Osborn-King 1923-2019

I wrote this largely as Mumsy was dying peacefully before my brother and me in the JR. So in some respects it has her approval!

Born in 1923 Irene was 96 years young! At 96 all out she knew and we know she had a glorious, unbelievably long, solo innings at the crease with her beloved Bill leaving far too soon for the Pavilion. Only a few weeks ago in a marvellous conversation she said that she had enjoyed a wonderful, wonderful life and was ready to go. Then she lightened the hour and my distress by asking 'don't forget to fill the birdbath' as I left the house!!

I make no attempt to paraphrase Mum's long life but rather grab this opportunity to say a colourful farewell.

Mum was the elegant and strong foil that Dad needed; the perfect Swann to his Flanders. The mother of three children: Roger, our sister Carole and myself the youngest. Mum was always especially mindful of my sister Carole - the smallest up to then surviving baby ever born at the Radcliffe Infirmary.

Irene herself was the only child of Jean and Stan and was born in Chingford. Yep, she was an Essex Girl! Money and times were tight as her Dad had been swindled in business in the rag trade yet she managed to get a scholarship and made the most of it.

Mum and Dad first locked eyes coming over London Bridge during an air raid and discovered they were each making their way to Guy's Hospital where she was a radiographer and he was training to be a dentist. They struck up a conversation and were instantly smitten. Mum told me only a month ago that Dad asked a passing policeman where the nearest park was.... 'with long grass'... once enlightened off they went!

After marrying, Mum and Dad came to Oxford where his family were. They



bought a property in Banbury Road; he put up his dental plate and waited for patients. This was helped enormously by the newly created National Health Service. Dad became President of the local Dental Association and of the Clarendon Club situated on the High Street in Oxford whilst Mum was the perfect attractive, vivacious hostess. They threw open their beloved garden at Bagley Wood in Kennington for summer parties. Mum drove one of the earliest Minis as its inventor Alec Issigonis was one of Dad's patients. Off we would all speed to the newly created Cowley Centre to visit the first supermarket in Oxfordshire!

Dad succumbed to septicaemia in 2002 and it simply stunned her. But in her stoic fashion she closed that book and proceeded to live as happily as was possible, albeit always annoyed with Dad that she was doing so alone, another full 17 years at their beloved Orchard Haven.

She saw all her three children marry and have, in turn, grandchildren visit her. Natalie,

Susanne, Alexander and Simon. She adored them all equally and their visits were the highlights of her later life. Her neighbours were so very kind to her and so very thoughtful towards her.

She was an independent feisty soul, lately for several years with a shattered pinned backbone of steel. Steely she was and no loss to the diplomatic service with her 'it has to be said'....

Apart from her wonderful cleaner and her husband Brian Mum would not entertain homecare - Sam was always 'coming in the morning' and she saw hospital short stays as no more than an annoying 'pick me up' weekend breaks - paid for by the NHS! None of us children dared suggest a care home!

Her conversations were always fun and reflective, not self-centred and she kept her lively interest in everything to the end. She never laboured or moaned about herself whilst all the while physically falling apart.

At our very last natter at Orchard Haven I read out a cutting from a newspaper article about John McCarthy's captivity at the hands of the Jihad. We both laughed exceedingly as, when he was thrown by his captors into a very small cell he found that the darkness was already inhabited by the Church's envoy Terry Waite. Apparently John remarked: '*Christ, there's not much room in here*', to which Waite (who had not spoken to anyone for over four years) replied: '*Well, there was...until you arrived*'

Well Mum I don't expect to hear you make the same complaint when you re-join Dad. Indeed, I imagine the first words you will be saying to Dad are '*Move over Darling*'

She loved life her family, her friends, her birds, her garden and was always proud of what others had achieved and where their travels had amazingly taken them.

**Graham Osborne-King**



### Graceful Gardens DESIGN

**Gardening Service  
by RHS qualified female gardener**

*Garden design / Plans / Landscaping / Planting  
Demonstrations / Consultations / Pruning / beds and borders...*

**Call 07814 691040**  
**email: [sundaycarrigan@gmail.com](mailto:sundaycarrigan@gmail.com)**  
**www.gracefulgardens.vpweb.co.uk**

*Quotations by appointment      References available  
Wallingford and surrounding villages covered*

### -Victoria Dyde-

**Bespoke Curtains & Soft Furnishings**

A well established local family business with 30 years experience

- ❖ Handmade Curtains, Pelmetts, Roman and Roller Blinds etc.
- ❖ A wide range of fabric samples
- ❖ Track and Pole supply and fitting
- ❖ The complete service available - from measuring to hanging (if required)

Please contact Victoria Dyde:  
Tel: 01865 407197  
Email: [mcknight1967@gmail.com](mailto:mcknight1967@gmail.com)  
Website: [www.victoriadydecurtaindesign.co.uk](http://www.victoriadydecurtaindesign.co.uk)



## Dorchester Cricket Club

### Results, Division 3

#### Dorchester

11 May 2019:

Dorchester v Hook Norton

Hook Norton won by 7 wickets.

Dorchester 89 all out, Hook Norton 92 for 3

18 May 2019

Wantage v Dorchester

Wantage won by 2 wickets

Dorchester 204 for 9, Wantage 206 for 8

25 May 2019

Dorchester v Brill

Brill won by 5 runs

Dorchester 136 all out, Brill 141 all out.

1 June 2019

Dorchester v Risinghurst

Risinghurst won by 5 wickets

Dorchester 166 all out, Risinghurst 167 for 5

8 June 2019

Dorchester v Marcham

Dorchester won by 1 wicket

Dorchester 105 for 9, Marcham 102 all out.

15 June 2019

Kidlington v Dorchester

Match abandoned

### Results, Division 6

#### Dorchester II

11 May 2019:

Dorchester

Swinbrook v Dorchester II

Swinbrook won by 113 runs

Dorchester II 135 all out, Swinbrook 229 for 5

18 May 2019

Dorchester II v Chesterton

Dorchester II won by 9 runs

Dorchester II 155 all out, Chesterton 146 all out

1 June 2019

Kidlington II v Dorchester II

Kidlington II won by 5 runs

Dorchester II 171 for 9, Kidlington II 176 all out

15 June 2019

Dorchester II v Steventon II

Steventon II won by six runs

Dorchester II 166 for 9, Steventon II 172 for 7

Ahoy there me hearties - all aboard for the adventure of a lifetime! Long John Silver and his fearsome crew may think that the treasure is within their grasp, but they've reckoned without the ladies of the Smugglers Cove Women's Institute!

Filled with mischief, custard pies, songs and laughter, this is a voyage into panto mayhem that you definitely do not want to miss!

# Treasure Island

20-23 November 2019

Read-through/Singalong : Monday 1st July - 7.30 pm  
Auditions : Thursday 4th July - 7.30 pm

Dorchester Village Hall, Queen Street, OX10 7HR

For more info contact Ann :  
[pantotreasure@gmail.com](mailto:pantotreasure@gmail.com)

**DADS**  
Dorchester Amateur Dramatics Society



Oxfordshire Historic Churches Trust

(Registered Charity No 235644)

## LOOKING FORWARD TO

# RIDE + STRIDE for Churches 2019

The date to remember is

**Saturday 14<sup>th</sup> September.**

Ride + Stride is a **FUN** draising day out!

In previous years we have welcomed walkers, cyclists, two red tractors, two tandems & even two vintage silver Rolls Royces to the Abbey!



Ride+Stride is an annual sponsored event to raise money for the Abbey & Oxford Historic Churches Trust.

**Would YOU like to Ride or Stride for the Abbey and OHCT?  
Do you know someone else who would like to join in?**

Further information will be available later on this month, including a list of participating churches, sponsorship forms and instructions for taking part.

For further information, please contact me: [rosemarybyrde@btinternet.com](mailto:rosemarybyrde@btinternet.com)



## John Mills

1943-2019

John Mills was born on 5 June. His father was overseas in the Army so, during the war years, John, an only child, was brought up by Viola, his mother, and Auntie Belle, her sister – John's beloved second mum.

When the war ended, there was a great shortage of housing, and John's father became part of a group of ex-servicemen who began work on building their own houses. While the building work was progressing, John and his parents lived in the small flat above his grandfather's sweet shop in Caversham Road. How many children would envy him that? But it was wasted on John – he never liked sweets.

At the age of 11, John went to Ashmead School, Reading – a newly-opened comprehensive school, which specialised in giving a more technical education. This was the perfect school for John, who was, even then, acquiring a fount of practical knowledge.

In the sixth form, the boys were allowed to bring motor bikes to school. This was when he became friendly with Colin Palmer and Sid Liddiard, also motor bike and car enthusiasts, and they had many happy outings together. John always remembered that they were at Brands Hatch when Stirling Moss's car flew off the track – a crash he survived, but which finished his racing career.

Amongst John's group of friends was the son of an undertaker, whose father gave them an old hearse. They lost no time in removing the shelf from the back and creating a large space for seating. No seatbelts or health and safety in those days!

They planned a holiday in Cornwall and arranged an early morning pick up for two of the boys in Reading at, appropriately, Cemetery Junction. As the boys waited, a police car came by and they were asked what they were doing. 'Waiting for a hearse', they chorused. Clearly suspicious, the police pulled into the curb further up the road and waited. Sure enough, along came the hearse!

John and Colin were also keen on rallying. John was the driver and Colin the navigator. To avoid other traffic on the roads, they often went rallying on a Saturday night in the hills of Wales. I'm not sure what the sleeping residents of any outlying villages thought of that.



John was a lifelong Arsenal supporter and a talented racket sports player. He played badminton, squash and tennis – all to a high standard – regularly playing against his good friend, John Warburton. John W. remembers John being the star player in Henley Squash & Badminton Club in his early 20s. The two Johns continued to play each other for over 50 years until John's recent stroke.

John also took up golf in his middle years and loved it. Keith Russell remembered the applications they both made to be accepted as members for Frilford Heath Golf Club. John, true to his relaxed personality, was not worried, confident in undergoing the 'trial by sherry'. Keith, however, sent a letter, purporting to be from the Club, which declined outright John's application. John was momentarily thrown when he opened the letter, but he soon realised that Keith was behind the joke. In due course, they were both accepted as members at Frilford, playing regularly thereafter for over 25 years.

John became a Member of the Royal Institution of Chartered Surveyors in 1971, and eventually a Fellow. He began work at Henley RDC, but then moved to the NHS in West London, where many of the good quality buildings, hospitals and health centres were due to John's excellent oversight of their design. He was particularly proud of his work in creating the new Heart Unit at Harefield Hospital for Professor Magdi Yacoub.

His colleague, Mike Bellamy, remembered that John was highly regarded amongst

the people he worked with – his easy-going, can-do approach was appreciated by many. Mike and a few work colleagues formed a social group which continue to have regular golf days. As a tribute to John, this group will, in future, play for the renamed Kennedy/Mills Trophy.

John met Rosemary at Henley RDC in 1971. They married in September 1972, and Alastair and then Catriona (Katie) were born in 1975 and 1976 respectively. He loved his family. He was devoted to them, and to Harry, their Golden Retriever. As his daughter said, 'He was a softie at heart, and loved all animals'.

John was a huge supporter of Rosemary and all her interests – regularly coming home early to look after the children so that she could attend her Dorchester Amateur Dramatics' rehearsals. Eventually, he masterminded the running of the bar for the DADS' performances.

John was always the go-to person for anything practical. He and Rosemary moved into Brook Garden in 1978, it was then a two-bedroom cottage. He set about raising the roof, and extending it, all in his spare time, and much of it on his own. He also built his own cars in his youth; the final one being an E-Type Jaguar – only selling this when two young children made it an impossible car for a family. His son and son-in-law always knew they could rely on him for help in anything to do with DIY in their homes, or problems with their cars.

John suffered a stroke at the age of 43, and was paralysed down his left side, but typically, he fought to regain full mobility, and was back on the squash and badminton courts within six months. His second stroke three years ago was much more severe. He was again determined to fight back to full health, but this time it was much more difficult. He had to give up playing sport and driving, both of which he missed hugely.

John was the proud grandfather of Anna, Tom and James. He doted on them and was always delighted to see them. Even in hospital, when he was very ill, he opened his eyes wide to see them before they left – kissing each of them.

Rosemary, Alastair and Katie were at John's bedside when he died peacefully.

# Thank you!



Together we raised almost

# £50,000!



Whether you organised a whole event or poured tea, moved stuff or took ticket money, cooked for artists, directed traffic, made cake, manned the bars, helped with marketing, abseiled, sponsored, made a scarecrow, danced on custard or simply came along and had fun—we couldn't have done it without you!



Take a look at the full photo gallery at  
**[www.dorchesterfestival.com](http://www.dorchesterfestival.com)** (and PLEASE email  
your photos and video to  
**[festival@dorchester-abbey.org.uk](mailto:festival@dorchester-abbey.org.uk)**)



Wow! Dorchester on Thames certainly knows how to put on a fantastic and fun festival!

Style Acre was delighted to be your charity partner for this year's festival, creating some amazing memories, meeting so many great people and with the bonus of raising a wonderful amount of money at the same time.

We thoroughly enjoyed working with Steph and Nick Forman and the whole festival team to put on such a spectacular range of events. We were particularly delighted that the people we support could play such an active role. Style Acre supports people with learning disabilities and autism across Oxfordshire through a range of housing and support services. We are passionate about being part of the communities we live and work in, and the festival was the perfect opportunity to put this into practice.

We do not have enough room to talk about everything, but some of our highlights include: great fun at the big bash selling wine and raffle tickets; a mix of people we support, people we employ, relatives and friends of Style Acre surviving the abseil down the tower; the fantastic atmosphere at the Folk Night. Our smoothie bike seemed to be a hit at the food fair and we certainly enjoyed judging the dog show!

So a massive thank you to you all, especially Steph, Nick and Sue for your support and welcome. We would love to continue the partnership with other events in the future and we welcome any ideas you may have. We would also be delighted to welcome you if you had any time on your hands and wanted something positive to do with it. We are always looking for volunteers to help with driving people to work placements, helping at our charity shop in Wallingford or our tearoom in Blewbury. We guarantee fun and a great fuzzy feeling that you can only get when working with the people we support.



If you want to get involved or find out more about what we do please visit [www.styleacre.org.uk](http://www.styleacre.org.uk) and get in touch via [community@styleacre.org.uk](mailto:community@styleacre.org.uk) or give us a call on **01491 838760**

With thanks and warm wishes

**Chris Ingram (CEO)**

**Anita Powell (Community Fundraiser)**

## 2019 Fun Run: The Winners

| Category              | No of entries | Winner                | Time  |
|-----------------------|---------------|-----------------------|-------|
| <b>Ladies 50 Plus</b> | 8             | Amanda Bicknell       | 28:49 |
| <b>Men 50 Plus</b>    | 9             | Mike Atkinson         | 21:36 |
| <b>Adult ladies</b>   | 30            | Eleanor Newbigin      | 24:20 |
| <b>Adult Men</b>      | 32            | Aaron Burgess         | 17:29 |
| <b>Under 18 Girls</b> | 10            | Evie Warren           | 23:36 |
|                       |               | Alice Hodges          | 24:23 |
|                       |               | Hannah Boyd           | 27:53 |
| <b>Under 18 Boys</b>  | 11            | Nat Gauden            | 20:38 |
|                       |               | Finn Gauden           | 21:05 |
|                       |               | Gabriel Munoz-Duckett | 23.36 |
| <b>Under 12 Girls</b> | 18            | Emily Channa          | 22:15 |
|                       |               | Jessica Boyd          | 31:20 |
|                       |               | Poppy Keller          | 32:17 |
| <b>Under 12 Boys</b>  | 7             | Theo Stephenson       | 21:24 |
|                       |               | William Walton        | 22:15 |
|                       |               | Oliver Evans          | 25:53 |
| <b>Under 8 Girls</b>  | 10            | Delilah Budd          | 29:29 |
|                       |               | Fern Andersson        | 33:25 |
|                       |               | Octavia Goodwin       | 40:17 |
| <b>Under 8 Boys</b>   | 8             | Fintan Spence         | 29:08 |
|                       |               | Charlie Barton        | 30:20 |
|                       |               | Kyran Sharma          | 32:45 |







Photo: Caroline Seed

*'We were utterly blown away - what an amazing production and cast.. You are all enormously talented.'*

Ros  
Jo

written  
William  
directed  
Caroline  
15, 16, 17  
Dorchester

Quotes sent in by



*'I was really impressed by the way the production used the space of the Abbey.'*





# meo uliet

by  
Shakespeare  
l by  
e Seed  
7, 19, June  
er Abbey

members of the audience.

*'A wonderful production with an outstanding cast.'*

Photo: Caroline Seed

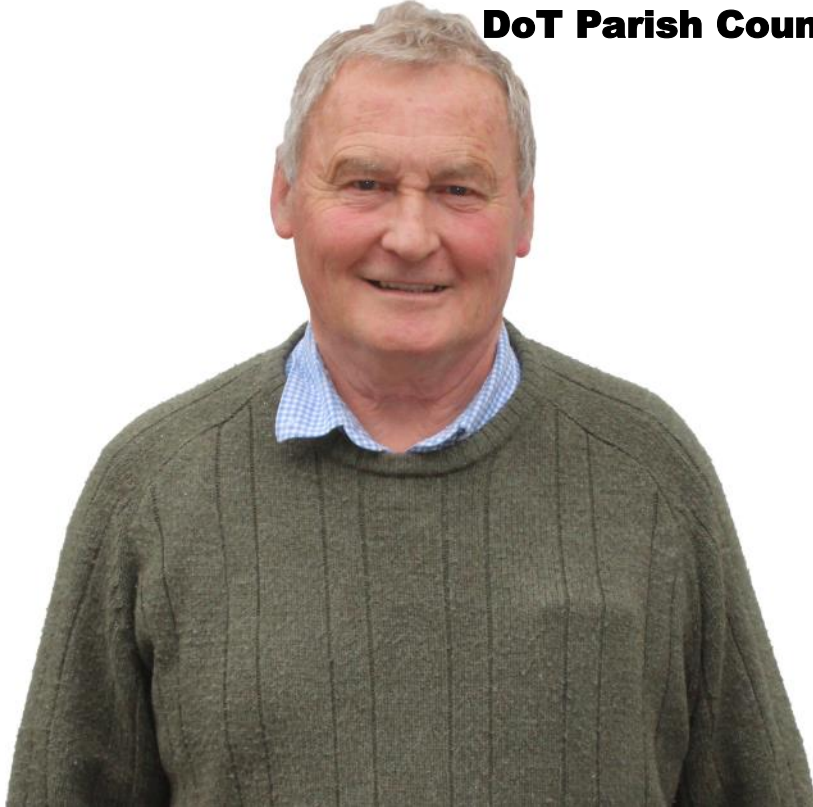


*'Masterfully directed by Caroline Seed'.*





## **Councillor Chris Hill** **on stepping down as Chairman of** **DoT Parish Council**



One of Chris's disappointments has been the Parish Council's inability to prevent the closure and demolition of Belcher Court to be developed as executive homes. Chris would have liked to have seen the building retained and reconfigured as one and two bedroom affordable homes, meeting the NDP's plan of creating affordable homes within DoT, in line with the covenant to keep the land in use for the residents of DoT in perpetuity. However, the limitations of parish council powers meant that the District Council was able to approve the development plans without reference to the Parish Council. This has led indirectly, though, to another of Chris's achievements which is the planned development at Allen's Pit which is to include affordable housing. The inclusion of affordable homes here came about through discussions between the Parish Council and the landowner, who had previously been unsuccessful in obtaining permission to build solely free market homes there.

In May of this year Councillor Chris Hill stood down as Chairman of Dorchester on Thames Parish Council, although he continues as a parish councillor. In our June issue we published an open letter from Richard Winslet thanking him for all he had done in his time as chairman. This month we follow that up with an interview with Chris, to find out what he feels his achievements have been, and what remains yet to be done.

Chris became chairman of the Parish Council in 2015, on the retirement of Margot Metcalfe and following the elections of that year. He had already been a councillor for 12 years, having been co-opted onto the council back in 2003, so he brought a wealth of experience to the position.

At the time, the Parish Council was producing the Neighbourhood Development Plan, and gravel extraction was the big issue of the day. Since then Bishop's Court Farm has been sold, attracting a number of other issues particularly with footpaths, the Demesne Field came under threat of building, the Oxford to Cambridge Expressway has emerged as a threat, and Belcher Court has been re-developed. So how does Chris feel that the Parish Council has managed all of these issues under his leadership?

One of his key successes, he feels is the completion of the Neighbourhood Development Plan.

Progress with this slowed down after the loss of some key members of the team working on it. Chris offered to become 'co-ordinator' of the team, declining to be termed chairman of it. 'I could see that being chairman would suggest it was going to be "my" project' he said 'and I wanted to avoid that and to keep it a team project.' This still, however, involved much hard work, getting the plan to fruition, getting it agreed by SODC and then by the government inspector and finally bringing it to a village referendum in March 2018, where it was overwhelmingly approved 398 votes to 17. Chris counts this as one his key achievements, which provides a framework for future development within DoT.

Whilst that was going on, the prospect was raised of building being allowed on the Demesne Field, between the village and the by pass, revoking its Green Belt status, and proposing up to 300 new houses. The Parish Council called a public meeting to which 150 people flocked. There, SODC retreated from what was believed to be its previous position on the issue and publicly stated that the risk of it happening was very small. Another success, Chris feels, for the parish council under him. The risk has not totally disappeared but with the NDP now in place, it has been made more difficult.

There are a number of other areas of which Chris is justifiably proud. These include the involvement of volunteers in activities such as the clearing of the underpass at Bridge End and clearing the area at the corner of Drayton Road, to improve the environment of the village; getting Wallingford Green Gym to clear the footpath at the rear of Page Furlong and Martin's Lane, and to reopen the footpath adjacent to Watling Lane. In his open letter last month, Richard Winslet complimented Chris on being 'hands on' and Chris has really got himself involved in these projects as well as clearing the cemetery and planting daffodils there. Chris said that he certainly would not ask other people to do jobs he would not be prepared to do himself. 'If I start an initiative, then I will be involved in it and "just get on with it"' he said.

There are other things that he wished he had been able to progress. The pavilion in the Recreation Ground, has not yet been developed into a multi-sports building with female changing facilities, still sadly lacking, but this was hampered by the lack of a co-ordinated sports body within the village. He would have liked to have been able to develop a working relationship the new owners of Bishop's Court Farm when it was sold in 2016, which, he feels, would have been mutually beneficial.





**Chris, switching on the Christmas tree lights in 2015**

to the new owners and the village and avoided issues that have arisen since then.

And there is a constant frustration in being hampered by the limits of the powers of a parish council: 'Often we are only mere consultees, only being able to express our view to the decision makers, SODC and OCC. Planning applications are an example of one such area.' But this is the lot of parish

councillors everywhere.

Chris is pleased, though, with the way that the parish council has run under his leadership. He preferred a consensual approach, he says, which allows people to express their views and still come to a harmonious decision, allowing disagreement but not confrontation, unlike some parish councils.

What does his successor have left to grapple with? The Oxford-Cambridge Expressway has not gone away entirely, nor has the issue of gravel extraction. Although both have receded from being an immediate threat within the bounds of DoT, both could still impact us through increase traffic, noise, and pressure to build. Chris feels that the ecology and archaeology of Dorchester are two of the main things that his successors must strive to protect, whilst at the same time improving the environment of the village for the benefit of residents, while avoiding detrimental developments.

What next for Chris? with more time on his hands, he'll be spending more time travelling in his motor home with his wife, Sheila, and already has trips lined up to the Isle of Wight and the Cotswolds.

He remains a councillor and still wants to play his part in developing and protecting DoT, because, he says, 'I love this village and want to continue to put something back.' He hopes that there are many other people who love living in Dorchester, and that they too will think about becoming a parish councillor and play an active part in the success of the village, as he has done.

*(The incoming Chairman of the PC, Mark Williams, outlines some of his priorities on page 25.)*

# ARBOCARE TREE SURGERY LTD

**Tree surgery  
Landscaping  
Grounds Maintenance**

## Qualified, insured, experienced arborists

- Contractors to the National Trust
- Surveys & reports
- Patios & Decking
- Turfing & Fencing

*For more details contact us on:*  
**Freephone 0808 155 5815**  
**Mobile 07778 811136**  
**Email mharvey31@gmail.com**  
**www.arbocare.co.uk**

## 250 varieties and colours of basket & patio plants all grown on the nursery

*Seasonal Opening:  
April-July & September-November  
7 days a week - See website for details*

**HANGING BASKET  
SPECIALISTS**

---

**BEDDING &  
CONTAINER PLANTS**

---

**VEGETABLES  
& HERBS**

---

**PERENNIALS,  
CLIMBERS & SHRUBS**

e: andy@purelyplants.co.uk **01491 833 831** w: www.purelyplants.co.uk  
 Purely Plants Nursery, 142a Wantage Road, Wallingford, Oxfordshire OX10 0LU

## L B Plumbing

Toilets, taps, immersions,  
showers, leaks and more,  
**no job too small**

Fully insured, free estimates,  
no call out charge

**Call Lee 01491 834484/  
07981642688**



## Meg Tapley

1927-2019

We all remember Meg for her wicked sense of humour, clever mind and her gentle, generous nature.

Meg was the firstborn of her green-grocer/flowerist mother and clerk father in Kings Lynn. Her brother Neville was born two and a half years later.

Meg won a scholarship to High School at the age of ten, where she met her best friend Betty, on whose family farm she spent time in her teens. Meg's mother taught piano, and her father and mother were members of the local amateur dramatic society, so she grew up with a love of music and literature. Meg was also a Girl Guide.

Meg won a scholarship to study BSc Zoology and Botany at Queen Mary College in wartime London. She was evacuated with four other girls to King's College, Cambridge where they were refused entry and had to find their own digs, but attended lectures and tutorials. She returned to London in 1945 and graduated in 1947.

Meg shared her love and wonder of the natural world with her future husband Bob. They met at Queen Mary's when Bob crashed into her whilst sliding down a banister! Both were members of the rowing club. During summer vacations they went potholing with friends. They married in 1948. They loved fell walking in the Lake District.

Meg became a Demonstrator at Chelsea Polytechnic teaching physiology to medics and subsequently Zoology lecturer at Acton Technical College.

In 1948 Bob obtained employment on a coffee research station on the southern



slopes of Mount Kilimanjaro; Meg followed and they started their family of four children in 1951, followed later by five grandchildren and two great-grandchildren.

Meg drove a school bus to the local town – a challenge in the rainy season on the dirt road. In between driving Meg attended the Commercial College for typing and shorthand, and taught biology.

A keen gardener, Meg created a 'museum' rose garden and grew, prepared and sold chrysanthemums and carnations to a shop in town.

Annual holidays included camping in the bush, or at the seaside with its white sands, coral reefs and surfing beach.

In 1966 the family moved back to the UK and settled in Cambridge, where Meg volunteered for Meals on Wheels and the Blind Society, was an active church member and joined the WI. She passed her City & Guilds in lace making and basketry, and taught corn dolly making. Meg was a founder member of the Lace-makers Guild and Basketmakers Guild, and became Editor of the Basketmakers Association magazine.

Meg and Bob bought a derelict cottage in Weardale, renovated it over the years, spending weekends and holidays in a caravan in the garden. They settled there in retirement, both being active in local museums. She was active in the WI and at various times was a PCC secretary, churchwarden and organist. She became computer literate and taught basket making. Meg and Bob loved and cherished their family, and their home became a favourite family holiday destination.

Following Bob's death, in 2009 Meg moved to Dorchester and led an active social life, attending the Abbey, Sheila Harman's group, WI, Book Club and Sewing Group. Meg helped making Mothers Day posies, shopped at the Co-op and went out to lunch several times a week with friends.

Towards the end of her life Meg took pleasure sitting in her chair by the window listening to the sparrows, watching spiders spinning their webs and getting fresh air among the daffodils with her daughter Jill.

We are all grateful for her love. Now she is resting in peace with her Bobby.

**Jill Eldridge**



### Bespoke Curtains and Blinds

Based locally I am able to make and/or supply:

- Quality handmade curtains, roman blinds & cushions
  - A huge selection of fabrics
  - Pelmet & Headboards
  - Poles and curtain tracks
- Roller, vertical & venetian blinds
  - Plantation Shutters
- Bed valances & Bespoke lampshades
- Full professional measure and fit offered

Enquiries welcome please call Sharene on 07811 296 454 for a free initial consultation

Email [info@thimblesandthreads.co.uk](mailto:info@thimblesandthreads.co.uk)

[www.thimblesandthreads.co.uk](http://www.thimblesandthreads.co.uk)

## Massage Matters

### Pregnancy and post-natal treatments

Massage is an excellent way to relax and ease muscle strain during your pregnancy. It can also be a welcome break for you in the demanding early months with your new arrival. Book a nurturing, soothing, and deeply relaxing treatment today from a fully qualified pregnancy therapist.

Based at The George Hotel, Dorchester. Entrance off the High Street.

To book please call **077250 62259** or email [massagematterstome@gmail.com](mailto:massagematterstome@gmail.com) – for more information visit [www.massagematters.me.uk](http://www.massagematters.me.uk)





## Muriel Ann Hill

1936-2019

Muriel Ann Hill 'Jane' was born on 5 Feb 1936 to Jack and Ann Laker. She had an unsettled childhood as her father was made a prisoner of war when she was three. She met him at the age of nine on Cholsey station. Her mother Ann died when Muriel was 10, leaving her and her sister Christine who was only 6 months old. Christine was adopted by Ann's sister Kit and her husband Jim, but Muriel had to live for periods of four months at a time with her grandmother and her Aunts, Kit and Vera, barely seeing her father.

She left Wallingford Grammar School at 15 and worked at Reynolds and Johnstones. Here she met Leo Hill, the man she was married to at the age of 18. For reasons unexplained, he chose to call her 'Jane'. They bought a cottage on Dorchester village green which had no water, power or toilet. They married on 24 April 1955. Their daughters Julia and Paula were born two and a half years apart. Life was happy and full, with many local friends

Jennifer and Jerry Nudds decided to sell their bungalow in Wittenham Lane and Leo and Jane snapped it up. It has remained the family home ever since.

Jane worked for a time in Exon's Bakery. The White Hart bought the bakery premises and turned it into a Tearoom, where Jane met and worked with Fred and Freda Strudwick. After a while Doreen Knipe offered Jane and Freda a small cottage in her garden, which they turned into a Tea-



room of their own. It was a happy and sociable place to be for the whole village.

By now Paula was married to Malcolm Elias and had given birth to Andrew. They also moved back to Dorchester from Oxford, so Jane was delighted to become a granny. Julia had a daughter, Amy and then soon after Paula had her second son Daniel. Julia had a second daughter, Anna. Jane was so proud and happy with them all living nearby.

Jane was President of the WI for nine years. She helped to form the Berinsfield Car Service with Dr Pritchard, which still runs today. She was involved with The Friendship Club and also began helping

at St Birinus School by listening to reading and helping with crafts.

After about six years, Jane and Paula started a business selling dried flowers at house parties.

This thrived so they took on a unit offered by the Kruzco family and started Decorations with a Difference. From this they progressed to wedding flowers and Julia also became involved.

Jane and Leo enjoyed many holidays and bought a touring caravan which they both enjoyed.

Leo retired in 1996 and they began to holiday more, sometimes alone, with the grandchildren or with Gill and Graham Howard. They annually visited lifelong friends, Gloria and Norman in St Mawes, Cornwall.

Sadly Leo died in 2003 which inevitably changed her life immeasurably. Jane began to enjoy long distance travel to places like South Africa, Oman and Morocco. She travelled with Paula and Julia and really enjoyed spreading her wings.

She had had even greater joy in recent years with the births of five great grandchildren: Andrew and Emily had Sebastian, Reuben and Eliza, Amy and Alex have Rafferty and Dan and Sarah have Leo, named after his great grandfather.

She passed away on 24 June this year in the JR after a long battle with cancer. She was blessed with a lifetime of love



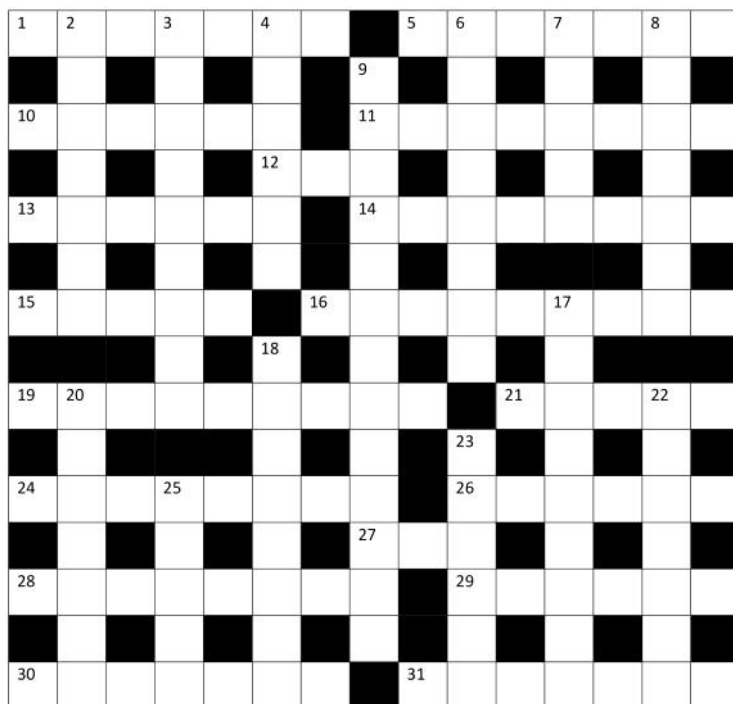
### Items wanted for 'Narnia'!!

Have you got any items just cluttering up your homes/ attics/garages that could be used for our *Narnia: The Lion, the Witch and the Wardrobe* exhibition at Dorchester Abbey? We'd be grateful for any/all donations listed below (please indicate if you would like them returned to you at the end of the exhibition). For further information and/or to discuss a possible donation please contact Margaret Craig the Education Officer on 01343 3164 or drop her an email on [education@dorchester-abbey.org.uk](mailto:education@dorchester-abbey.org.uk)

**We're looking for the following items:** an old fashioned wardrobe, old standard lamp, dressmaking 'dummies', old coats (real/faux fur if available!) and/or cloaks, old wintery themed decorations, children's table and chairs, white fairy lights, play crowns, foam/soft play swords/shields, small old hard-backed books, small table, small bookcase, armchair, bow and arrows, horn, quilting wadding and/or white polyester stuffing, AND old fashioned non-electric kettle!

# Dorchester News Crossword No. 9

Compiled by Slider



## Across

- 1 Cub most difficult to catch (7)
- 5 Incite a run in and get a foothold (5)
- 10 The man follows a street at the landing place (6)
- 11 Language on the radio? Take a gun to it - this is hard stuff! (8)
- 12 Lend it to get some of the crop (3)
- 13 A fossil entails digging in an old movie (6)
- 14 Dying together once without an article (8)
- 15 Payback in a pastime. Really? (5)

- 16 Current prisoner? I am inside and it will make some noise (9)
- 19 No lapsing - unique creatures are here (9)
- 21 Short download - six in full colour (5)
- 24 The Aspen king is sardonic? Partly, but the king is missing (8)
- 26 German and single? Ruined! (6)
- 27 Back to the old actor with no previous Romeo (3)
- 28 No exercise, I fret but I am expecting great things (8)
- 29 Take in what sounds funny (6)
- 30 In Scotland, since the railway holds gravity, there is a working together. (7)
- 31 The attraction about a drug is not working (7)

## Down

- 2 Bowled perhaps on the exterior (7)
- 3 Lack of hygiene perhaps - the group is caring. (9)
- 4 The good men are insignificant inside, mere confections in fact (6)
- 6 A potent polemic gives protective support (8)
- 7 Part of flight for one leaving the horizontal (5)
- 8 Open University scene is mad, no repeat advised (3,4)
- 9 Flowing a tad to the West this is generated continuously (9,4)
- 17 E.g in fridges could be where you find your breakfast. (5,4)
- 18 Sounds to be a light dynasty late in the day (8)
- 20 Article going to pot (7)
- 22 The religion I serve includes the means of purification (7)
- 23 Not many apply the tesserae - by the sound of it it's pointless. (6)
- 25 A Frenchman is backward in discovering this unpleasant stuff (5)

## Chiropodist

First and third Wednesdays of each month,  
11.30am - 4.00pm  
Village Hall (back room)  
Tel: **07850 196714**

## Marsh House Bed & Breakfast

Comfortable B&B in Shillingford.  
Please ring **01865 858496** for further details.

## The Acupuncture Barn

### Acupuncture for Families

Appointments now available for:  
Acupuncture, Facial Acupuncture, Moxa and  
Cupping treatments

Chinese Medicine 5-Elements approach to treating you as a whole  
Body, Mind & Spirit

Licensed Treatment Room:

High Street, Chalgrove, OX44 7ST

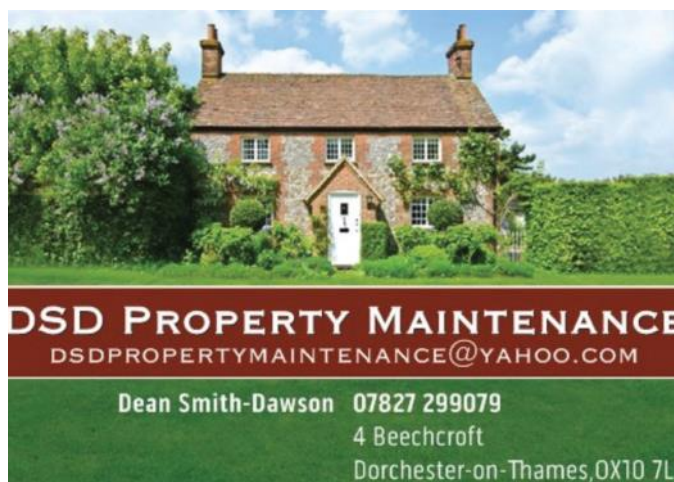
**07879 403800**

[acupuncturebarn.co.uk](http://acupuncturebarn.co.uk)

Flexible times by appointment

**COSMETIC**  
ACUPUNCTURE UK

College of Integrated  
CHINESE MEDICINE





### July and August Meetings

The July Meeting of the Parish Council will take place on **Wednesday 10 July** and the August Meeting will take place on **Wednesday 14 August**. The Meetings will take place in the back room of the Village Hall. The Agenda will be posted on Parish noticeboards and on the Parish Council section of the Village website – <https://www.dorchester-on-thames.co.uk/parish-council/> - three clear days in advance.

All Parish Council meetings are open to the public; a resident who wishes to raise any matter of concern is welcome to do so at the start of the meeting.

### Dorchester Festival

The Parish Council has written to Steph Forman to thank her and her team of dedicated helpers for all the hard work that they put into organising the Dorchester Festival. The memorable and enjoyable programme of events raises a significant sum of money for good causes. This is much appreciated and is an achievement in which the whole Parish should be very proud.

### Contacting the Parish Council

The Parish Clerk is Geoffrey Russell of The Pigeons (next to The Fleur de Lys), 5-7 High Street, Dorchester-on-Thames OX10 7HH

Telephone (during normal office hours, please, unless an emergency) **07745 311439**. Text messages are always welcome. email: [parishclerk@dorchesteronthames.co.uk](mailto:parishclerk@dorchesteronthames.co.uk)

For information about the Parish Council go to <https://www.dorchester-on-thames.co.uk/parish-council/> This includes the minutes of all Parish Council Meetings and financial information such as monthly bank balances and payments as well as a record of all planning matters upon which the Parish Council has been consulted and reports from our County and District Councillors.



### Speedwatch

We will be collecting information on motorist speed in the village over the summer period and are particularly keen to hear from anyone who may be willing to spare an hour or two to help us with collecting this important data.



We know that many villagers are concerned about motorist speed through the village. St Birinus Primary School are particularly concerned about safety for the children and support our proposal to install a speed limit of 20 mph through the High Street and around Queen Street and Martins Lane.

The Parish Council will use our information and villager opinions to consider the proposal for a 20mph zone and the installation of two permanent speed indicators similar to the one in Burcot on Meadside and Abingdon Road. If approved, we will be seeking support from our County Councillor, as funding will be needed to arrange for new Speed Limits and Speed Indicators. It may also be of interest to note that Warborough are the latest of nearby villages to set up a Speedwatch group.

To volunteer to help with Speedwatch 2019 please contact: [parishclerk@dorchesteronthames.co.uk](mailto:parishclerk@dorchesteronthames.co.uk)

### From the Chairman of the Parish Council



What is your parish council for? Well time for me, as your new Chairman to explain what we do. Before I do so though, I'd like to pay tribute to my predecessor, Chris Hill, who has led our parish council with distinction for the past few years. Thank you Chris.

So, on to what we are for. Well we don't do schools, bins, roads or footpaths. What does that leave? You'd be surprised. One thing we do is provide a distinct Dorchester voice with our District and County councillors on the decisions those bodies make that do affect our village and our lives. But in addition we get a chance to make a difference to the things that can make Dorchester just that bit better, that bit more special.

Over the past couple of years we have spent a lot of our effort on looking after Dorchester's interest with the Oxford to Cambridge Expressway and where gravel extraction might take place as well as improving things like our cemetery and bus service. But with a new council, this month, we took the opportunity to discuss what we'd like to do in our village over the next couple of years. The themes round the table were ones I hope are familiar to you; smartening up the footpaths, verges and flower beds around the village; doing more on cycle racks and links to the X39/40 bus; doing more to develop more affordable housing; and more.

You may agree or disagree with these priorities. Either way I'd love to hear from you. It's not everybody's cup of tea to attend a council meeting in the village hall on a Wednesday evening to tell us what you think, but if not, don't be shy, tell me what you think and would like your council to do for our village. You can contact me on [chairman@dorchesteronthames.co.uk](mailto:chairman@dorchesteronthames.co.uk)

I'll keep you updated as the months go by on how we get on and hopefully hear from some residents with your views.

**Mark Williams**

**Chairman of DoT Parish Council**



**CHIMNEY SWEEPING  
COMPANY  
LTD**

★ NO FUSS ★  
★ NO MESS ★  
★ NO PROBLEM ★

Oxford  
Stadhampton  
Deddington  
Mobile

01865 772 996  
01865 400244  
01869 337500  
07711 443050



Jenks Oxford are based here in Dorchester and so are convenient for all your tree needs.

Ask for a free site consultation and quotation on our full range of general and specialist services from our qualified professional staff.

Tree felling & removal - Pruning - Tree surveys - Diseased or unstable trees - Stump removal - Hedge cutting... and much more, just ask, and with £10 million public liability insurance for peace of mind.



**FREEPHONE**  
**0800 458 3328**  
info@jenksgroup.co.uk www.jenksgroup.co.uk

Proud to sponsor **FOOTSTEPS**  
and DOT Under 10's football team

County Council approved. Arboricultural Association Approved. NPTC & Lantra Qualified. **WHICH?** Approved.

## STEVE WILKINSON & SON

Est 1990

Property maintenance in  
Dorchester area

**Painting: Interior and Exterior,  
Plastering, Stonework,  
Patios, Repointing brick & stone,  
Fencing.**

*Telephone: 01865 891554*

*Mobile: 07885 538514*

## Logs for Sale

**Martin Drew**

**01865 343378 or 07774 170727**



## **Q** SELF STORAGE

[www.qselfstore.co.uk](http://www.qselfstore.co.uk)

at  
Dorchester-on-Thames  
and  
Steventon



### We store:

- \* Secure units for household and business---£31.06 inc. VAT per week
- \* Caravan, trailers and RV's -----£600.00 inc. VAT per year
- \* Fenced open storage with or without 20ft container-----POA

- \*\*\* Access: 24/7 - 365 days
- \*\*\* Entrance barrier
- \*\*\* Electronic coded gate
- \*\*\* Tracking CCTV
- \*\*\* Padlock supplied
- \*\*\* Excellent access, straight to unit doors
- \*\*\* HGV access
- \*\*\* HIAB collections for larger commercial items
- \*\*\* Household removal quotes

**Tel 01235 847164 any time to view or book**



# From your District Councillor... ...Robin Bennett



## New District Council Appointments and Plans

As part of the new South Oxfordshire administration, I have been appointed the cabinet member for Development and Regeneration, which is an exciting and busy portfolio, with responsibility for many areas including the Berinsfield scheme.

A press release containing information on all the new Cabinet and Committee appointments is on the SODC website:

<http://www.southoxon.gov.uk/news/2019/2019-05/new-leader-cabinet-and-chairman-south-oxfordshire-district-council-appointed>

I have established a positive relationship with the new leader and our partners, and I look forward to working alongside them to represent the people of Dorchester-on-Thames.

Our first priority is to take a long, hard look at the emerging Local Plan (2011-2034), currently sitting with the government inspectors, and assess what we might be able to do to turn it into something acceptable to our communities. As a result, we have already set in motion a major information-gathering exercise, which included a full Council briefing by SODC Officers, and will be forming a

working group to research and review all options at our disposal. This is not a trivial undertaking, given the huge amount of work that has already gone into the development of the LP2034, but we are committed to doing everything in our power to reduce the impact of new housing on the environment and on our Green Belt. We are also determined to provide more truly affordable housing in our District and we need to be creative about new ways to do this.

We want to make it very clear that this review has no bearing on the validity or enforceability of the existing Neighbourhood Development Plans, or those currently under development.

We also urgently need to return SODC finances to better health, seeking innovative ways to increase revenue and manage all costs effectively and efficiently without continuing to dip into SODC reserves to prop up the operating budget. And of course we will be seeking ways to put our money where our mouth is by examining ways in which SODC itself can operate in a more environmentally-friendly way. This will include how we specify and build the new South and Vale Council offices in Crowmarsh.

The new Council was pleasantly surprised to find that the outgoing Council, at its last meeting in April, passed a motion declaring a climate emergency, exhorting the Council not to wait for the national Government to change its policies before seeking ways to reduce carbon emissions and to be mindful of environmental concerns in all aspects of its operations and decisions. We will be looking at how to turn this declaration into a plan of action.

South Oxfordshire was recently ranked in a DEFRA survey as the top recycling district in the South East of England, and third nationally, recycling 63% of its waste. Well done to all our residents who diligently separate their waste and use the facilities provided to ensure we minimise the rubbish we send to landfill. Keep up the good work!

If residents do experience any problems with their bins not being collected by Biffa, to whom the Council outsources rubbish collection, they should report this online by visiting [southoxon.gov.uk/missedbins](http://southoxon.gov.uk/missedbins) before midnight on the next working day after the collection was due, or by calling **03000 610610** before 5.00pm on the next working day.

[Robin.bennett@southoxon.gov.uk](mailto:Robin.bennett@southoxon.gov.uk)

## BODY CONTROL PILATES®

**BCP level 3 certified teacher specialising in back & joint care, sports rehab, pre & post natal and Parkinsons Disease**

Beginners and Mixed Ability Classes in Benson and Dorchester On Thames  
121 sessions available for personalised programmes

To book contact Claire on 07801 298 978  
[www.millstreampilates.co.uk](http://www.millstreampilates.co.uk)  
[claire@millstreampilates.co.uk](mailto:claire@millstreampilates.co.uk)

## ALTOM TREE CARE LTD



For a reliable, professional service  
Mob: 07958 759747  
**01844 339 833**  
FULLY INSURED & FREE QUOTATIONS  
Email: [altomtree@gmail.com](mailto:altomtree@gmail.com)  
[www.altomtrecare.co.uk](http://www.altomtrecare.co.uk)



Tree Felling  
Height Reductions  
Stump Grinding  
Landscaping • Fencing  
Grass/Hedge Cutting  
Patios • Turfing  
Maintenance Contracts  
**SEASONED LOGS FOR SALE**

## The Landscape Group Oxford

GARDEN, GROUNDS & PROPERTY MAINTENANCE

We are a local business delivering:

- Garden and Grounds Maintenance
- Fencing and Turfing
- Hedge Cutting and Tree Work
- Drives, Patios and Landscaping
- House and Garden Clearance

Following their closure, we have taken on the customers, equipment and staff of Berinsfield Community Business and offer the same quality and value.

£10 million Public Liability Insurance. Trading Standards Approved. Safecontractor Accredited. NPTC & Lantra Qualified.



**'QUALITY, SERVICE & VALUE'**

Tel: 01865 341750

e: [lee@tlgo.co.uk](mailto:lee@tlgo.co.uk)  
w: [www.tlgo.co.uk](http://www.tlgo.co.uk)

**AKT**

**Planning+Architecture**

Chartered Town Planners and Architects

AKT is an established local practice in Dorchester on Thames with a wealth of experience in all aspects of planning and architecture. We pride ourselves in providing a professional and bespoke service and look forward to discussing your project.



Contact Sarah or Paul  
for a free informal chat.  
Tel: 01865 340989  
[www.archkingtech.co.uk](http://www.archkingtech.co.uk)

A member of the  
Royal Town Planning Institute  
+  
Royal Institute of British Architects



## BRYANS LOCK SERVICES

Phone: 01865 340138. 01491 520820.  
01235 420742

Locks Supplied-Fitted-Serviced-Opened-Replaced for  
Timber- Aluminium- Steel, PVCu doors & windows.

Keys cut to pattern.

Keys to number for office furniture.

Supply Safes, Document & Media Cabinets & Files  
Locks to Insurance Company Specifications.

Master Locksmiths Association Approved Company.  
Reg. No. 002623

## Dorchester Window Cleaning Service

We provide a friendly reliable service every 5-6 weeks.  
Free quote—no obligation. Est 1990

Contact Craig Taylor

Tel: 01235 512881. Mob: 07778 661548

[www.elitewindowcleaningservice.com](http://www.elitewindowcleaningservice.com)

A bill can be left for postal payment if you are not home.

Online payment also welcome.

Other services include: Conservatory roof cleaning; Fascia cleaning; Gutters unblocked & cleaned out.

## Advertising in Dorchester News

Costs per issue are for an eighth of a page £11.75 mono, £12.75 colour; quarter page £23.50 mono, £25.50 colour; half page £35.25 mono, £38.50 colour and full page £47.00 mono, £51.00 colour. There are ten issues per year.

Please send artwork to  
[dorchesternews@dorchesteronthames.co.uk](mailto:dorchesternews@dorchesteronthames.co.uk)  
one week before the deadline for editorial copy given on page 2.

One-time adverts, please send a cheque, payable to 'Dorchester Abbey PCC', to  
Nick Forman,  
Willoughby House,  
73 High Street,  
Dorchester-on-Thames,  
OX10 7HN.





# From your MP...

# ...John Howell

**I**n April I wrote about on some aspects of the working of Parliament. This was in response to questions about what MPs do. This month I will continue with this.

There are two debating chambers in the House of Commons – the Chamber, which is often seen as the main debating chamber on TV, and Westminster Hall. Much of the Government business takes place in the Chamber where statements from ministers on key current issues, questions to ministers on issues relating to the work of their department, and debates take place. Where there are differences on opinions among MPs there may be a vote at the end of a debate.

In Westminster Hall MPs can call for debates on any issues of concern or interest. It is a chamber for effective cross party working and robust debate. There are no votes on debates in Westminster Hall but a minister from the department to which the issue relates will be present and will respond on behalf of the Government at the end of the debate.

From time to time images do the rounds on social media suggesting that the Chamber of the House of Commons is packed full when issues that directly affect MPs are debated but empty when other issues are debated, in particular welfare issues. You may not be surprised to learn that this is a complete mis-representation. Debates in the Chamber can continue for several hours and there will inevitably be times when MPs have to go to other meetings. In any debate the Chamber is usually most full at the beginning for the opening speeches where the key ideas are set out and then again towards the end when the Minister sums up. If there is a vote anticipated the Chamber may well start to fill up as MPs have to be in the lobbies before the doors are locked for voting. So, in a debate if photos are taken at the beginning or at the end there will be a full chamber, in the intervening hours it may well look quite empty. This does not have any bearing on the subject matter, but simply reflects the competing demands on MPs' time which I mentioned in my article in April.

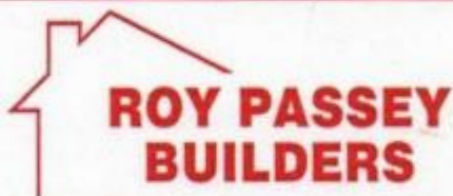
When voting MPs register their vote for or against the question by physically going into an area to one side or the other of the

debating chamber which is known as a 'lobby'. Hence a vote is called a 'division'. For MPs who are not in the Chamber when a vote is called a division bell will ring across the Parliamentary estate. This allows MPs who are in other meetings to know that there is a vote and they have 8 minutes to get to the division lobbies. If they are not inside the lobbies within 8 minutes they cannot vote. Those agreeing with the question will go through the Aye lobby and those against will go through the No lobby and their names are recorded as they pass through. The process takes about 15 minutes. Once they have voted MPs will either return to their meetings or go into the Chamber to hear the outcome of the vote. It is quite a dated system and in some Parliament's around the world electronic voting has been introduced. Proposals to adopt electronic voting here have been considered but no one alternative has been supported. The time in the lobbies is actually quite valuable time as it provides an excellent opportunity for MPs to speak to colleagues or lobby ministers on issues.

I often have constituents ask me to attend a specific debate on an issue that is particularly important to them. If I can do so I will, but as I hope you will appreciate from these articles, it is not always possible. However even if I cannot attend a debate I can still support issues by writing to ministers or taking other action as appropriate to the particular topic.

If you have an issue of concern relating to Parliament you can email me at [howelljm@parliament.uk](mailto:howelljm@parliament.uk) or write to me at the House of Commons (House of Commons, London, SW1A 0AA) or my constituency office (PO Box 84, Watlington, OX49 5XD).

If you would like to be on the circulation list for my e-newsletters and briefings please email me asking to be added to the circulation list. For more information about my work both in Westminster and in the constituency please do visit my website which is regularly updated. [www.johnhowellmp.com](http://www.johnhowellmp.com). You can also follow me on twitter @JHowellUK or on Facebook [www.facebook.com/JohnHowellOxfordshire](https://www.facebook.com/JohnHowellOxfordshire)



Interior and Exterior Builders and Decorators

Ashcroft, High Street, Benson, Wallingford, Oxon. OX10 6RP

Tel: 01491 838797 • Mob: 07860 890925

Email: roypassey@btconnect.com

www.roypasseybuilders.co.uk



## REMLOC PLUMBING & HEATING LTD

Trading Standards Approved  
Gas Safe & CIPHE Registered

- Boiler Servicing
- Central Heating Installation
- General Plumbing
- No Job too Small
- Free Estimates
- Emergency Call-outs

01235 536345 / 07709 961 655

[www.remloc.co.uk](http://www.remloc.co.uk) / email: [info@remloc.co.uk](mailto:info@remloc.co.uk)

## HOWARD CHADWICK FUNERAL SERVICE

A caring family owned and managed Funeral Service

- Dedicated Private Chapel of Rest •
- Golden Charter Pre-Paid Funeral Plans •
- Specialists in Memorial Stones and Designs •

Benson Lane, Crowmarsh Gifford

Wallingford OX10 8ED

Tel: 01491 825222

[www.chadwicksfuneralservice.co.uk](http://www.chadwicksfuneralservice.co.uk)



Golden Charter  
Funeral Plans



## Professional Building Advice

Planning to Building Completion • Domestic & Commercial

Construction Project Management

Chartered Surveyors 25 yrs experience

Mark G Bristow MRICS, MAPM, Cert Mgt BSc Hons

M 07912 476 636 T 01865 343552

[info@markbristow.co.uk](mailto:info@markbristow.co.uk)

## Larkmead VETS



Outstanding Care for Pets, Farm Animals &  
Horses throughout South Oxfordshire

- Open 7 days a week
- Ample parking and spacious reception rooms
- Extensive modern hospitalisation facilities, including orthopaedic surgery
- Sunday surgeries at Larkmead Didcot
- Regular Cat only Clinics at our Sutton Courtenay and Benson practices
- Personal emergency cover by Larkmead Vets, 24 hours a day, 365 days a year

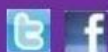
XLVETS

CHOLSEY & BENSON 01491 651379

DIDCOT & SUTTON COURTENAY 01235 814991

HORSES & FARM ANIMALS 01491 651479

[www.larkmead.co.uk](http://www.larkmead.co.uk)



## DORCHESTER FIREPLACES & INTERIORS

Visit our unique showroom, opposite the beautiful  
Dorchester Abbey in one of Oxfordshire's most picturesque  
villages, Dorchester on Thames.

- We offer a complete in house service from design to installation
- SIA Ecodesign ready stoves for 2022 legislation
- Our team of in-house professional fitters are all fully qualified and HETAS registered
- Complimentary home or site visit
- Showroom open 10am to 4pm Tuesday – Saturday
- Woodsure Kiln dried bags of logs, Kindling & Flamers sold here

Tel: 01865 341452 or E-mail

[enquiries@dorchesterfireplaces.co.uk](mailto:enquiries@dorchesterfireplaces.co.uk)



WOODBURNING STOVES FOR THE 21<sup>ST</sup> CENTURY





**Cinema:** All regular performances start at 7.30pm unless otherwise stated.  
 Tickets £8 for adults, £5 for under 15 unless otherwise stated.  
 Please look on [www.cornexchange.org.uk](http://www.cornexchange.org.uk) for further updates on screenings

#### July

|         |                       |
|---------|-----------------------|
| Mon 1   | <b>Tolkien</b> (12A)  |
| Tues 2  | <b>Booksmart</b> (15) |
| Wed 3   | <b>Booksmart</b> (15) |
| Thurs 4 | <b>Booksmart</b> (15) |
| Mon 22  | <b>Apollo 11</b> (U)  |
| Mon 29  | <b>Mug</b> (15)       |

#### LIVE SHOWS

**Wednesday, 17 July to Saturday, 20 July, 7:45pm**  
**Private Lives**  
**Tickets £12**

**Sinodun Players present Private Lives, Noel Coward's 1930 comedy of manners.**

'I think very few people are completely normal really deep down in their private lives. It all depends upon a combination of circumstances. If all the various cosmic thingummies fuse at the same moment, and the right spark is struck, there's no telling what one mightn't do.' Noel Coward

Elyot and Amanda are glamorous, rich, reckless...and divorced. Five years later, their love for one another is unexpectedly rekindled when they take adjoining suites of a French hotel while honeymooning with their new spouses, Victor and Sybil. Noel Coward's glorious wit and dramatic precision combine to form his 1930s masterpiece about modern romance. Here is Coward at his sparkling best as a modern dramatist and *Private Lives* continues to be one of his most performed and read works.

#### COMING SOON

**Thursday, 26 September 7.00pm**

**NT Live: One Man, Two Guvnors**

Tickets £12.50 (adults), £10 (seniors and under 18s)

Pre-recorded from 2011, the hit play by Richard Bean, based on 'The Servant of Two Masters' by Carlo Goldoni.

**Tuesday, 22 October 7.00pm**

**NT Live: A Midsummer Night's Dream**

Tickets £15 (adults), £12.50 (seniors), £10 (under 18s)

From the Bridge Theatre in London, filmed in front of an audience

#### LIVE SCREENINGS

**Saturday, 6 July, 8.00pm**

**Westlife – The Twenty Tour, Broadcast live from Croke Park Dublin**

**Tickets £12.50 (adults), £10 (under 18s)**

Westlife are back! It's been 20 years since the record-breaking boyband smashed into the charts with their first No. 1 single and now their highly anticipated reunion tour is coming to cinemas worldwide, broadcast live from Dublin's iconic Croke Park stadium. 'The Twenty Tour' will see Shane, Nicky, Mark and Kian perform their brand-new music, as well as all 14 of their UK No.1 hits.

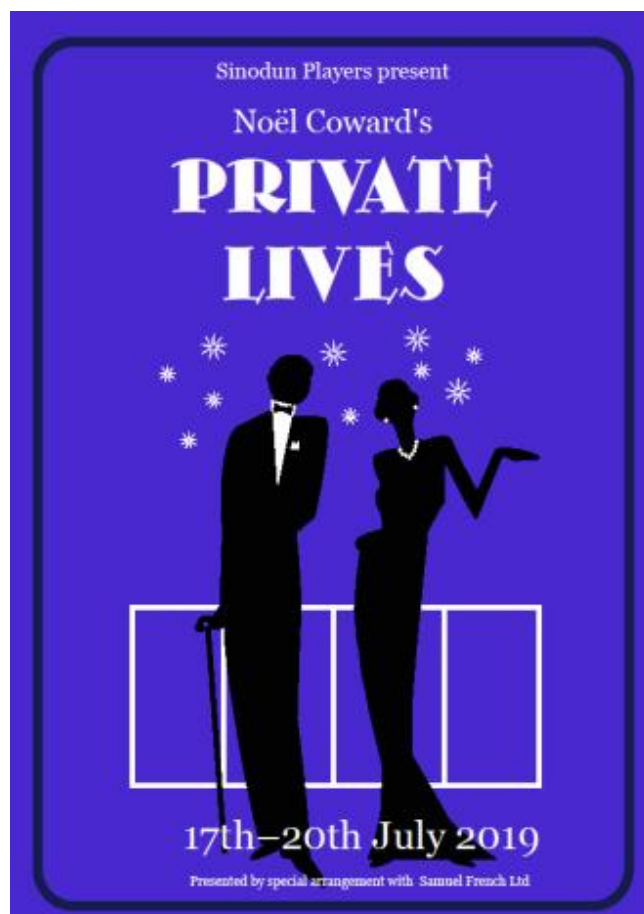
**Thursday, 25 July, 7.00pm**

**NT Live: The Lehman Trilogy**

**Tickets £12.50 (adults), £10 (seniors and under 18s)**

**Live by satellite from London's West End**

The story of a family and a company that changed the world, told in three parts on a single evening. Academy Award-winner Sam Mendes (*Skyfall*, *The Ferryman*) directs Simon Russell Beale, Adam Godley and Ben Miles who play the Lehman Brothers, their sons and grandsons. On a cold September morning in 1844 a young man from Bavaria stands on a New York dockside. Dreaming of a new life in the new world. He is joined by his two brothers and an American epic begins. 163 years later, the firm they establish – Lehman Brothers – spectacularly collapses into bankruptcy, and triggers the largest financial crisis in history. This critically acclaimed and five-time Olivier Award nominated play features stunning set design from Es Devlin (NT Live: *Hamlet*) and is broadcast live from London's West End as part of National Theatre Live's 10th Birthday season.





## What's on in Wallingford

### Family Archaeology Day

On Saturday **27 July** from 11.00am – 4.00pm, Wallingford Museum has organised another exciting Family Archaeology Day at the Museum.

This event will show the role that metal detecting can play, and see some results it has achieved in the Wallingford area. Meet local metal detectorists and see their favourite finds. Bring along your own finds for identification by our archaeological experts.

Bring along your fossils to show our expert, Steve Head, who will be on hand to identify anything you might have found. Steve will also be able to show you some of his own fossil collection from around the world.

You'll be able learn all about how archaeology is done and see the results of recent work carried out throughout Wallingford. Then you can find out how to begin to identify the sort of pottery that helps to date the finds from archaeology, and even try making your own pots for fun!

So there's plenty of family entertainment for this special archaeology day!

Entry is by Museum ticket at the door - £5 per adult (which gives unlimited entry until 30 November) but accompanied children are FREE.

Why not complement your visit by joining Wallingford's popular Guided Historic Town Walks, held on Saturdays starting from the Town Hall at 11.00am. The Walks are led by knowledgeable volunteers from Wallingford Museum, last 1 to 2 hours and cost £5 per head.

**Stu Darby**

[www.wallingfordmuseum.org.uk](http://www.wallingfordmuseum.org.uk)



### Queen's Award for Voluntary Service

We are immensely proud and happy to announce that The Wallingford Historical and Archaeological Society (TWHAS) has been granted a **Queen's Award for Voluntary Service** - the highest award a voluntary group can receive in the UK!

The announcement from Buckingham Palace appeared in the London Gazette for 2 June 2019, stating that the award has been given to TWHAS for 'Engaging the community with local history through research, archaeology, publications and its museum'

In due course we shall be invited to receive a signed certificate from Her Majesty The Queen and a crystal award with the award's logo insignia. These will be presented at a special ceremony by Tim Stevenson, the Lord Lieutenant of Oxfordshire, who is the Queen's representative in the county.

Congratulations everyone!!

**Judy Dewey**

(Founder member of TWHAS, and Wallingford Museum Curator)

[judy@piepowder.co.uk](mailto:judy@piepowder.co.uk)



### 'John Leland - A Tudor Traveller and what he saw'

Tim Porter will talk to The Wallingford Historical and Archaeological Society (TWHAS) about 'John Leland - A Tudor Traveller and what he saw'.

Tudor traveller John Leland is regarded as the father of local history. His extensive journeys round England and Wales were published in a series of books called the Itineraries. He described the towns and countryside he saw in some detail. One of his visits covered Berkshire, which contained the great castles of Windsor and Wallingford. Such eye witness evidence is invaluable. In this talk Tim Porter will look at John Leland in the context of his descriptions of the local area.

This talk will be held on **Wednesday 10 July**, 7.45 for 8.00pm, at St Mary's Church, Wallingford.

**Visitors (£4) are most welcome.**

**Katharine Keats-Rohan**

[www.twhas.org.uk](http://www.twhas.org.uk)

### Wallingford U3A

On **3 July** John Caldicott will talk about The Foundling Hospital. This will be interesting in its own right but also ties in with our projected visit to the Foundling Museum in September.

On **23 July** we go to Buckingham Palace: the State Rooms.

On **9 August** (a Friday) we are going to Millets Farm for an open air performance of *Comedy of Errors*. For more information about outings phone Hermione on **01865 858024** or check our website.

We are beginning to plan our holiday for 2020. These short holidays, usually five days or so and always in UK, are great fun for both singles and couples. For details check our website,

Our meetings are held at 2.00 pm on the first Wednesday of each month in Crowmarsh Village Hall. Visitors are always made welcome for the talk, tea and biscuits and the chance to meet and chat to people, about the talk or anything else that crops up. Come and join us.

For more information please visit our website

[u3asites.org.uk/Wallingford](http://u3asites.org.uk/Wallingford)

or phone Jill on **01491 835 994**

### Fishmonger

The travelling fishmonger comes to Dorchester every Monday and will stop at 3.30pm in High Street near the War Memorial.



## Day by day

|                 |   |
|-----------------|---|
| Mon<br>1 July   | <b>DADS</b><br>Treasure Island<br>Read through/Singalong<br>7.30pm<br>Village Hall  |
| Thurs<br>4 July | <b>Chiropodist</b><br>Village Hall (see p24)<br><br><b>Circle Dance</b><br>7.00pm<br>Dorchester Abbey<br><br><b>DADS</b><br>Treasure Island<br>Auditions<br>7.30pm<br>Village Hall                    |
| Sat<br>6 July   | <b>Historical Society</b><br>Outing to Salisbury<br>9.00am<br>Bridge End<br><br><b>Oxfordshire Cricket Association</b><br>Dorchester II v Swinbrook<br>Recreation Ground                              |
| Sun<br>7 July   | <b>Trinity 3</b><br>8.00am<br>Holy Communion (1662)<br>(Revd Jon Roberts)<br><br>10.30am<br>Morning Service with Revd Jen Brown<br><br><b>Dorchester Gardens</b><br>NGS Gardens open<br>2.00pm-5.00pm |
| Mon<br>8 July   | <b>Concert</b><br>Cranford House School<br>7.00pm<br>Dorchester Abbey   |
| Tues<br>9 July  | 10.15am<br>Short Communion  |
| Wed<br>10 July  | <b>Parish Council Meeting</b><br>7.30pm<br>Village Hall   |



|                  |  |
|------------------|--|
| Fri<br>12 July   | <b>Concert</b><br>Oxford County Music Services<br>7.30pm<br>Dorchester Abbey   |
| Sat<br>13 July   | <b>Oxfordshire Cricket Association</b><br>Dorchester II v Westcott II<br>Recreation Ground<br><br><b>Pre-School Summer Fete</b><br>11.30am-3.00pm<br>Dorchester Pre-school<br><br><b>Concert</b><br>Oxford County Music Services<br>7.00pm<br>Dorchester Abbey |
| Sun<br>14 July   | <b>Trinity 4</b><br>8.00 am<br>Holy Communion (1662)<br>(Canon Sue Booyo)<br><br>10.30am<br>Sung Eucharist   |
| Tues<br>16 July  | <b>DADS</b><br>Play reading<br>7.30pm<br>Village Hall  |
| Wed<br>17 July   | <b>Chiropodist</b><br>Village Hall (see p24)   |
| Thurs<br>18 July | <b>Classic Car Show,</b><br>1.00-4.00pm<br>George Hotel  |
| Sat<br>20 July   | <b>Oxfordshire Cricket Association</b><br>Dorchester v Wantage<br>Recreation Ground  |

Church services in Dorchester Abbey appear in red. More details can be found at:  
[www.dorchester-abbey.org.uk](http://www.dorchester-abbey.org.uk)

For details of services at St Birinus RC Church go to: [www.stbirinus.co.uk](http://www.stbirinus.co.uk)

|                 |  |
|-----------------|--|
| Sun<br>21 July  | <b>Trinity 5</b><br>8.00 am<br>Holy Communion (1662)<br>(Revd Jennifer Morton)<br><br>10.30am<br>Family Service<br><br>5.00pm<br>Choral Evensong |
| Tues<br>23 July | <b>Summer Concert</b><br>St Birinus School<br>6.00pm<br>Dorchester Abbey   |
| Sun<br>28 July  | <b>Trinity 6</b><br>8.00am<br>Holy Communion (1662)<br>(Revd Michael Lakey)<br><br>10.30am<br>Ordination   |

## Weekly events

|           |  |
|-----------|--|
| Monday    | <b>Tai Chi</b><br>2.00pm<br>Village Hall<br><b>Fishmonger</b><br>3.30pm by War<br>Memorial (page 32)   |
| Tuesday   | <b>Coffee in the Abbey</b><br>10.30am-12noon<br><b>Bellringing Practice</b><br>7.30pm Abbey  |
| Wednesday | <b>Holy Communion at Berinsfield Church</b><br>9.30am<br><b>Keep Fit Senior Circuits</b><br>10.00am<br>Village Hall<br><b>Mobile Post Office</b><br>10.30am<br>Outside Co-op |
| Friday    | <b>Choir Practice</b><br>7.00pm Abbey  |

Regular events also appear in the Parish Council's website:  
[www.dorchesteronthames.co.uk](http://www.dorchesteronthames.co.uk)

## Parish Registers

### Baptism

2 June Arthur Ray Norris

### Marriage

8 June Luke Smith and Chloe Smith

### Funerals

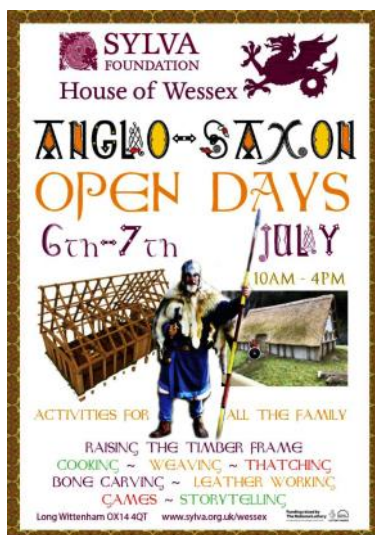
4 June Irene Osborn King

12 June Muriel Hill

### Memorial Services

17 May Margaret Tapley

10 June John Mills



## Day by day

|                 |   |
|-----------------|---|
| Thurs<br>1 Aug  | <b>Chiropodist</b><br>Village Hall (see p24)  |
| Sun<br>4 Aug    | <b>Trinity 7</b><br>8.00am<br>Holy Communion (1662)<br>(Canon Sue Booyes)<br><br>10.30am<br>Morning Service     |
| Sat<br>10 Aug   | <b>Oxfordshire Cricket Association</b><br>Dorchester II v Kidlington II<br>Recreation Ground                    |
| Sun<br>11 Aug   | <b>Trinity 8</b><br>8.00 am<br>Holy Communion (1662)<br>(Revd Rachel Carnegie)<br><br>10.30am<br>Sung Eucharist |
| Tues<br>13 Aug  | 10.15am<br>Short Communion  |
| Wed<br>14 Aug   | <b>Parish Council Meeting</b><br>7.30pm<br>Village Hall   |
| Thurs<br>15 Aug | <b>Classic Car Show,</b><br>1.00-4.00pm<br>George Hotel   |
| Sat<br>17 Aug   | <b>Oxfordshire Cricket Association</b><br>Dorchester v Kidlington<br>Recreation Ground                          |



Sun  
18 Aug **Trinity 9**  
8.00 am  
Holy Communion (1662)  
(Canon Sue Booyes)  
  
10.30am  
Family Service

Wed  
21 Aug **Chiropodist**  
Village Hall (see p24)

Sat  
24 Aug **Oxfordshire Cricket Association**  
Dorchester II v Watlington II  
Recreation Ground

Church services in Dorchester Abbey appear in red. More details can be found at:  
[www.dorchester-abbey.org.uk](http://www.dorchester-abbey.org.uk)

For details of services at St Birinus RC Church go to: [www.stbirinus.co.uk](http://www.stbirinus.co.uk)

Sun  
25 Aug **Trinity 10**  
8.00am  
Holy Communion (1662)  
(Revd Marcus Braybrooke)  
  
10.30am  
Sung Eucharist

Sat  
31 Aug **Oxfordshire Cricket Association**  
Dorchester v Radley  
Recreation Ground

## Weekly events

Monday **Tai Chi**  
2.00pm  
Village Hall  
**Fishmonger**  
3.30pm by War  
Memorial (page 32)

Tuesday **Coffee in the Abbey**  
10.30am-12noon  
**Bellringing Practice**  
7.30pm Abbey

Wednesday **Holy Communion at Berinsfield Church**  
9.30am  
**Keep Fit Senior Circuits**  
10.00am  
Village Hall  
**Mobile Post Office**  
10.30am  
Outside Co-op

Regular events also appear in the Parish Council's website:  
[www.dorchesteronthames.co.uk](http://www.dorchesteronthames.co.uk)



# STOPPED FOR A MINUTE OR MORE?



## Turn off your engine for cleaner air

[southandvale.gov.uk/turnitoff](http://southandvale.gov.uk/turnitoff)

## Beware of Doorstep Scammers

Rogue doorstep traders often take advantage of the warmer weather to offer home improvement services including gardening, window cleaning and gutter clearing. They will repeatedly offer their services at attractive rates and use persuasive and persistent sales techniques to encourage people into making rushed decisions. Scammers may conduct surveys just to get your personal details or as a cover to sell you goods or services you don't want or need.

- If someone knocks at your front door claiming to be from a company, first check their ID. If you're not happy, don't let them in.
- Never call the phone number on their ID card to check them out. Ask the salesperson to wait outside, shut the door and find the company number on the internet. If they're genuine, they'll understand.
- Never disclose your bank details.





## CONTACTING THE POLICE

To report a non-emergency crime, or to give information to Thames Valley Police, call **101**. Alternatively, call Crimestoppers anonymously on **0800 555111**. In the event of an emergency dial **999**.

## HEALTH SERVICES

### DIRECT LINE TO URGENT LOCAL HEALTH SERVICES

Dial **111** to access urgent local NHS health care services. Where possible, they will book you an appointment or transfer you to the people you need to speak to or send an ambulance if they think you need one. For non-urgent health needs you should contact your GP in the usual way.

### MINOR INJURIES

The Minor Injuries Unit at Abingdon Hospital, Marcham Road, daily from 10.00 am to 10.30 pm: **01865 903476**.

### A&E

The nearest A&E units are at the John Radcliffe Hospital in Oxford (**01865 741166**) and the Royal Berkshire in Reading (**01183 225111**)

### SURGERIES

Berinsfield Health Centre: **01865 340558**  
Clifton Hampden: **01865 407888**  
Millstream Benson: **01491 838286**

### ROOM HIRE

#### ABBEY GUEST HOUSE BOOKINGS

To hire the Abbey Guest House for private functions, meetings, exhibitions, etc, contact Kate Herbert on **01865 340007**, email [admin2@dorchester-abbey.org.uk](mailto:admin2@dorchester-abbey.org.uk)

#### HIRE OF DORCHESTER VILLAGE HALL

To hire our Village Hall, contact Kate Harris [bookings@dotvh.org.uk](mailto:bookings@dotvh.org.uk) or telephone **01865 689452**. Please telephone at least 24 hours in advance to arrange collection of the key.

## FAULTS AND COMPLAINTS

### STREET LIGHTING

Report any problems with a street light to **0800 317802**, available 24 hours a day. Callers will be asked for the address of the site and the nature of the fault.

### HIGHWAYS AND FOOTPATHS

Ring Oxfordshire Highways on **0845 3101111**, available five days a week, with a 24-hour answering facility. Complaints can also be sent via e-mail to [southernarea@oxfordshire.gov.uk](mailto:southernarea@oxfordshire.gov.uk).

### BLOCKED DRAINS

Ring Thames Water for blocked drains on **0800 316 9800**. Callers will be asked for the postcode of the address where the drains are blocked.

### REFUSE COLLECTION

If your rubbish is not collected on the due date contact the contractor direct. Call **03000 610610** and the website: [www.morerecycling.co.uk](http://www.morerecycling.co.uk)

### BERINSFIELD LIBRARY

Green Furlong, Berinsfield **01865 340771**  
Free Internet access. DVDs can be ordered.

### OPENING HOURS

Mon - closed  
Tues, Wed, Fri 10.00am - 12.30pm  
Tues 2.00-7.00pm  
Weds, Thurs 2.00-5.30pm  
Fri 2.00-5.00pm  
Sat 10.00am - 12.30pm

### MOBILE POST OFFICE

The Mobile Post office stops outside the Co-op every Wednesday between 10.30 and 11.30 am

## Useful Information

### ANIMAL WELFARE

RSPCA (wildlife): **0300 123 0206**  
St Tiggywinkles animal rescue: **01844 292292**  
Swan Lifeline: **01753 859397**

### TRANSPORT

#### DORCHESTER FLYER

The Dorchester Flyer runs every Friday from Dorchester to Wallingford at 10.00am and , returning at 12.00 noon. Tickets must be bought from Lily's in advance.

#### OTHER BUS SERVICES

Services X38, X39 X40 go every 20 minutes from the bypass at the end of Drayton Road to Oxford and Wallingford. Information about bus services, both local and national, is available from [www.traveline.info](http://www.traveline.info), and **0871 200 2233**.

#### OXFORDSHIRE TRAVEL ADVICE LINE

Free journey planning and advice for people over 65 and those needing a high level of support whilst travelling. **01865 323738**

### AGE UK

The UK's largest charity working with older people For help and advice etc. go to [www.ageuk.org.uk](http://www.ageuk.org.uk)

### WALLINGFORD VOLUNTEER CENTRE

WVC Volunteers provide help for the elderly, disabled or vulnerable, especially by giving lifts to medical appointments at hospitals in Oxford, Abingdon and Reading. You need to register as a client. Contact the Centre for more information. **01491 836345**  
[www.wallingford.volunteercentre@gmail.com](mailto:www.wallingford.volunteercentre@gmail.com)

### CONTACTING THE PARISH COUNCIL

The Parish Clerk is Geoffrey Russell of The Pigeons (next to The Fleur de Lys), High Street, Dorchester on Thames OX10 7HH; **07745 311439** (during normal office hours, please, unless an emergency); [parishclerk@dorchesteronthames.co.uk](mailto:parishclerk@dorchesteronthames.co.uk).

## USEFUL CONTACTS

### ANGLICAN PRIEST

Dorchester Rectory  
**Revd. Canon Sue Booy**  
**01865 340007**

### EDUCATION OFFICER

**Margaret Craig**  
**01865 343164**  
[education@dorchester-abbey.org.uk](mailto:education@dorchester-abbey.org.uk)

### ABBEY E-MAIL:

[admin@dorchester-abbey.org.uk](mailto:admin@dorchester-abbey.org.uk)  
Contact details for Church Wardens and other Abbey information are on the notice board in the Abbey.

### ABBEY WEBSITE

[www.dorchester-abbey.org.uk](http://www.dorchester-abbey.org.uk)

### VILLAGE WEBSITE

[www.dorchesteronthames.co.uk](http://www.dorchesteronthames.co.uk)

### ROMAN CATHOLIC PRIEST

The Presbytery  
**Fr. John Osman**  
Bridge End  
**01865 340417**  
[www.stbirinus.co.uk](http://www.stbirinus.co.uk)

Dorchester Abbey Museum E-mail  
[museum@dorchester-abbey.org.uk](mailto:museum@dorchester-abbey.org.uk)



## REFUSE COLLECTIONS

Fri 5 July **Green**  
Fri 12 July **Black**  
Fri 19 July **Green**  
Fri 26 July **Black**  
Fri 2 Aug **Green**  
Fri 9 Aug **Black**  
Fri 16 Aug **Green**  
Fri 23 Aug **Black**  
Sat 31 Aug **Green**

### Weekdays from 7.00am Saturdays from 6.00am

Weekly: food waste (in bio-degradable starch-based bag or wrapped in newspaper, in green caddy).

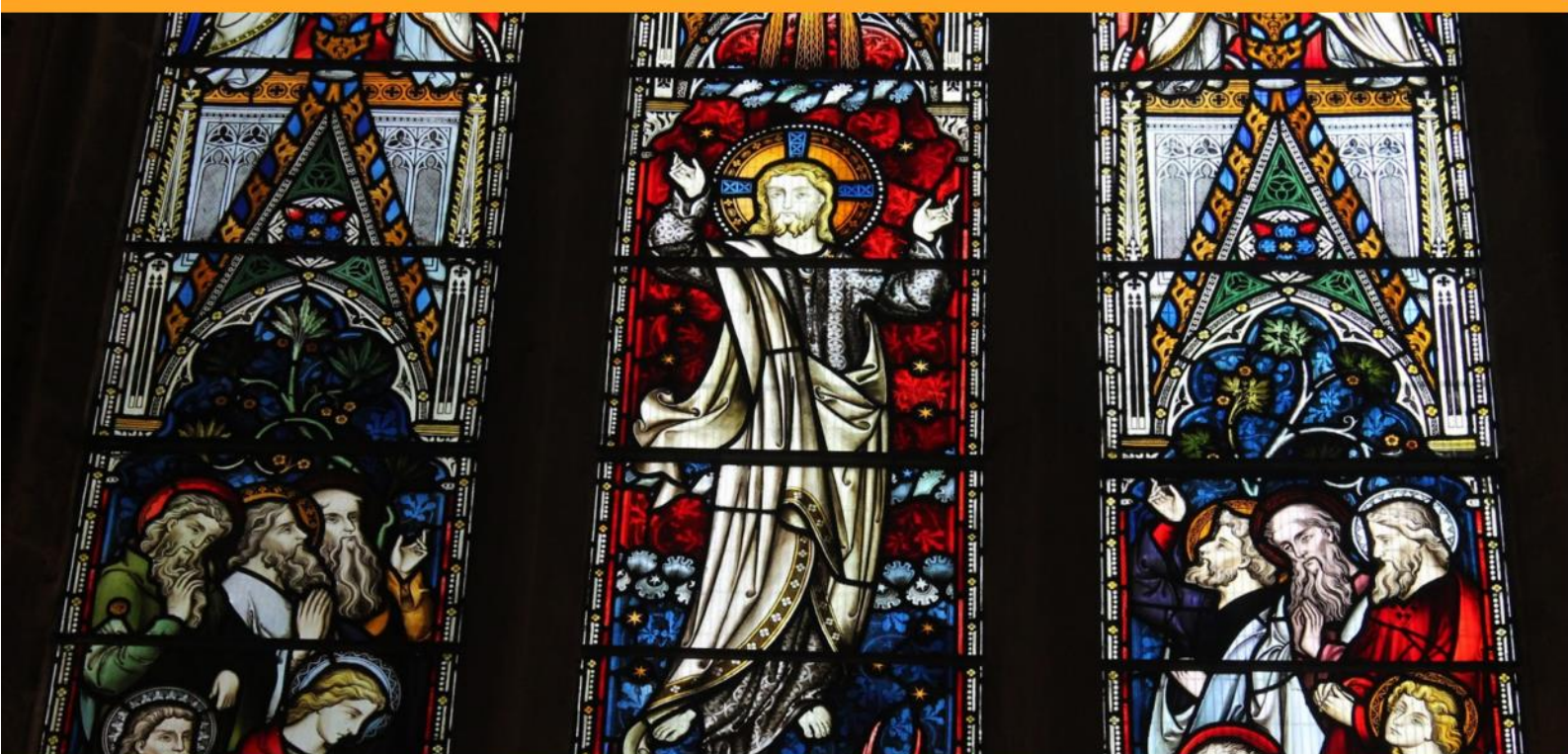
The recycling centre at Oakley Wood (off the A4130) is open 8.00am - 5.00pm seven days a week.

## Index of advertisers

|                             | Page |
|-----------------------------|------|
| Acupuncture Barn            | 24   |
| AKT Planning                | 28   |
| Altom tree care             | 27   |
| Anderson Orr                | 10   |
| Arbocare                    | 21   |
| Bell Motors                 | 28   |
| Ben Smith Carpentry         | 10   |
| Brannfords Garden Makers    | 12   |
| Bristow                     | 30   |
| Bryan's Locks               | 28   |
| Culham Garden Services      | 10   |
| Dorchester Fireplaces       | 30   |
| Dorchester Window cleaning  | 28   |
| DSD Property Maintenance    | 24   |
| Emanuel Christian School    | 10   |
| Four Winds                  | 12   |
| Full Circle                 | 6    |
| George Inn                  | 9    |
| Graceful Gardens            | 13   |
| Howard Chadwick Funerals    | 30   |
| In House                    | 6    |
| JEM chimney sweep           | 25   |
| Jenks                       | 26   |
| Larkmead Vets               | 30   |
| LB Plumbing                 | 21   |
| Marsh House B&B             | 24   |
| Martin Drew Logs            | 26   |
| Massage Matters             | 22   |
| Millstream Pilates          | 27   |
| Purely Plants               | 21   |
| Q Self storage              | 26   |
| Remloc Plumbers             | 30   |
| Roy Passey Builders         | 30   |
| St Mary's Dental            | 12   |
| Steve Wilkinson             | 26   |
| T W Hayden                  | 12   |
| The Landscape Group         |      |
| Oxford                      | 28   |
| Thimbles and Threads        | 22   |
| Victoria Dyde               | 13   |
| White Hart                  | 10   |
| Willow Cottage Beauty Cabin | 12   |



# A SUMMER CONCERT WITH A DIFFERENCE



**TUESDAY 23RD JULY 2019  
DORCHESTER ABBEY**

**A concert given by staff and parents, past and present,  
of Dorchester St Birinus School and featuring our  
head teacher, Mr Russell Leigh.**

**All welcome, proceeds will further support the  
excellent music provision within our school.**

**TICKETS £6 IN ADVANCE, £8 ON THE DOOR. CHILDREN UNDER 12 FREE. TICKETS  
FROM PARTICIPANTS, FROM SCHOOL AND FROM LILY'S TEA ROOM.**