

# ***Dorchester News***

*Free to every home in the parish*

***November 2017***







## In this issue

Abbey Christmas Cards	10
Abbey Guest House	4
Advent Carols	3
Advent Sleep Out	3
Advent Study Groups	3
Art Weeks Christmas Season	23
Berinsfield Library	33
Christmas at the Museum	4
Christmas services	3
Crossword	11
Culham Horticultural Club	4
DADS According to Rumour	18/40
Earth Trust	13
Felicity Anne Jarman	15
Football Results	13
Footsteps	18
From your County Councillor	29
From your MP	34
Heavenly Host Angels	5
Hempcroft Allotment News	5
Historical Society	4
Hosting with HOST UK	6
Janet Brindley Glover	16
Janet Turner	16
Langtree Sinfonia	36
Memorial Service	4
Neighbourhood Development	25
Oxford-Cambridge Expressway	32
Parish Council	25
Pre School News	6
Remembrance Day	4
Ride & Stride 2017	14
Royal British Legion	13
Save the Fleur de Lys	5
School Bingo Night	9
Shirlee Hazel	16
SODC coming home	34
Speedwatch	32
St Birinus School News	6
Swedish Christmas Table	6
Talking Point	3
Tennis Club Tournament/Quiz	13
Village Hall Draw	4
Volunteer Digital Skills	33
Wallingford Archaeological	35
Wallingford Corn Exchange	36
Wallingford Gardening Club	35
Wallingford Museum	35
Wallingford U3A	35
WI	5
Working parents	33

## Dorchester News November 2017 A DoT view

November: the clocks have gone back, and the dark is creeping into late afternoon as the days inevitably shorten. Is it to alleviate the gloom of the oncoming winter that so many things now spring into life during November?

The month kicks off with the Village Fireworks Display, which has become an instant institution since its return three years ago, masterminded by the Parish Council, and in particular Sue Graney. This year Footsteps have taken over the organisation, but you'll see many of the familiar features of the last two years and it promises to be another brilliant evening, providing the rain holds off.

There is indoor entertainment at the back end of the month with the DADS production of the farce *According to Rumour*. No panto this year (sorry kids) but this will entertain the grown ups and is, I am told, very funny. It is bound to be sold out, so get your tickets early.

There is also the school Bingo Night to raise funds for the PTA, and we start looking forward to Christmas, with the Abbey Museum holding a Christmas Shopping afternoon on the 12th and Art Weeks participant Emma Corry open for the weekend of 18th/19th. Benson Choral Society will perform in the Abbey on the 25th, always a prelude to Christmas, and the Realms of Angels event continues there throughout the month.

Early in the month, on the 9th, we'll get an update on the community bid for the Fleur de Lys. And I've achieved my ambition of having a crossword in Dorchester News. Thanks, 'Slider'. Who says November is gloomy?

Ian Brace

Cover: Fireworks on the Recreation Ground 2016



**Deadline for  
December/  
January  
Dorchester  
News**

email: [dorchesternews@dorchesteronthames.co.uk](mailto:dorchesternews@dorchesteronthames.co.uk)

## Editorial Team

Ian Brace, Gillian Johnson

## Distribution Co-ordinator

Maurice Day

## Copy Deadlines for Dorchester News

December/Jan 10 Nov

February 2018 12 Jan

March 2018 9 Feb

## Advert Deadlines for Dorchester News

One week before copy deadline. Items in electronic form may be sent via e-mail attachment to e-mail address at foot of page.

For newsletter for other churches in the Team send to [admin@dorchester-abbey.org.uk](mailto:admin@dorchester-abbey.org.uk) by the 9th of the preceding month.

## Advertising in Dorchester News

There are ten issues per year with double issues in July/August and in Dec/Jan. For an eighth of a page the cost is £11.75 mono, £12.75 colour; for a quarter page £23.50 mono, £25.50 colour; for a half page £35.25 mono, £38.50 colour and full page £47.00 mono, £51.00 colour.

All charges are put towards the cost of the paper, printing and postage of copies being sent outside the village.

To incorporate a logo or artwork, please supply a copy, preferably via e-mail: to address at foot of page or contact the editor.

One-time adverts, please send a cheque, payable to 'Dorchester Abbey PCC', to Nick Forman, Willoughby House, 73 High Street, Dorchester-on-Thames, OX10 7HN.

Printed by Higgs of Henley.



## Talking Point

## Revd David Haylett

I was intrigued to read in Church Times back in July a comment by the Revd Dr Alistair McGrath

*'My personal spiritual life is focused more on home and the parishes in which I minister and preach on Sundays, in a rural benefice on the western borders of Oxford Diocese. Leading worship in a 900 year old Cotswold church gives you a strong sense of tradition of faith – and an unsettling sense of responsibility for ensuring this continues in the future.'*

Revd Dr Alistair McGrath is a former Principal of Wycliffe Hall, a Professor of Science and Religion at Oxford University and has written and lectured refuting the ideas of atheist Richard Dawkins.

My interest was aroused because I often express a similar thought when I am welcoming congregations at 'occasional offices' in Long Wittenham. Standing beneath a chancel arch which has stood there for some 900 years sends a tingle down my spine and invokes a sense of continuity, history and tradition, I am a priest in a long line of priests who has stood on this spot and led worship and

officiated at major events in people's lives for nine centuries (longer if you count the Saxon church that was there before).

In our Team Ministry we are blessed (although at times we may feel burdened) with many historic churches which have witnessed to the glory of God for many centuries. We have inherited a tradition of faith and we are charged with a continuation into the future.

The question arises how do we ensure that continuation? A few weeks ago, I was invited to celebrate at Stadhampton when Caroline was on holiday. I have been to Stadhampton several times since it was converted into a dual purpose Church/Village Hall, but this was my first time leading worship since the conversion. I was delighted to hear how this conversion has brought new life to Stadhampton with the emergence of several new ventures and opportunities to build Village life.

With Dorchester Abbey we have a space where it is possible to introduce some flexibility for concerts, exhibitions and various events. In the "patch" I am most familiar with, the Bridge Group, at Long Wittenham a restoration some years ago revealed that the wooden floor of the North Aisle stood

directly on the earth and was dangerously rotten. So we replaced it with a concrete floor (a condition of the Faculty being that we used a specially formulated concrete so that if necessary it could be easily removed for archaeological investigation). This meant that the pews became moveable which created a more useable space.

As I look around other Church buildings I see many that are hampered with fixed furniture, usually Victorian pews which are rarely of any historic or artistic value (I suspect the Victorian Society, if it reads that, will add me to the list "iconoclasts") but for the majority of church buildings dating back to the Middle Ages, fixed pews are a recent addition, they are not sacrosanct. When I want to include young people in my "sermon" to encourage, involve and teach them, I need space to do it and in some of our churches that space does not exist.

So let us take a long hard look at our Churches, are they suitable for worship? Are they useable during the week for, possibly secular activities, which brings people across the threshold and into a space where they feel welcome and comfortable? Would that further the mission of the Church? I believe so.

## Advent Study Groups

Are you Contemplative? Compassionate? Courageous?

The Bishop of Oxford has prepared some special Advent study groups for parishes which help us to look at the things that were important about Jesus and how we can follow him – growing more Christ-like. These are opportunities to explore ideas about what it is like to follow Jesus and **everyone** is welcome – this is not a members only event!

There will be opportunities to join in these groups in Dorchester on Mondays, both afternoon and evening. There may be further opportunities – do get in touch to enquire!

## Advent Carols

Our Team Advent Carol Service on **Sunday 3 December** will take place in the Abbey at 6.00pm – please join us as we worship together and focus on preparing our hearts and minds for Christmas.

## Advent Sleep Out

The Church Urban Fund is raising money for Homeless people by inviting us to sleep out in our churches and be sponsored for doing so. If you would be interested in 'sleeping out' in Dorchester Abbey between 10.00pm and 7.00am on the night of **9/10 December** please get in touch with Revd Jon Roberts (**07980 929302**) who can provide more details.

## Christmas services

As you read this, preparations are being made for our special services in the Abbey to celebrate together at Christmas. We always love it when children come to the Crib service ready to join in the Nativity – which they can do 'on the night'. If anyone (usually over 10) would like a part that needs rehearsal please contact the office in the first instance. Our Candlelit service of Nine Lessons and Carols is on **December 17** – do please come yourselves and invite your families, friends and neighbours. Each year we invite people who represent different organisations, groups and businesses in the Dorchester Community. If you would like to propose someone to read – or if you would like to read yourself – please offer by calling the parish office on **01865 340007**.



**REMLOC PLUMBING & HEATING LTD**  
Trading Standards Approved  
Gas Safe & CIPHE Registered

- Boiler Servicing
- Central Heating Installation
- General Plumbing
- No Job too Small
- Free Estimates
- Emergency Call-outs

01235 536345 / 07709 961 655  
[www.remloc.co.uk](http://www.remloc.co.uk) / email: [info@remloc.co.uk](mailto:info@remloc.co.uk)



## Memorial Service Sunday 5 November

The season of All Saints and All Souls is a special time to remember and pray for those whom we love and who have been examples for us and who have died. Each year at this time I send a particular invitation to the families of those for whom we have hosted Funerals and Memorial Services in recent years. This year the service will be held on **Sunday 5 November** at 10.30am – a list of remembrance is read, prayers are said and there is an opportunity to light candles. Normally people receive a letter of invitation for five years. If there is someone important to you that you would like to be included in the list of remembrance who died longer ago or whose funeral service was held elsewhere you are most welcome to contact the office (**01865 340007**; [admin@dorchester-abbey.org.uk](mailto:admin@dorchester-abbey.org.uk)) or to sign the list which will be on the large table at the back of the Abbey.

## Remembrance Day Sunday 12 November

**Remembrance Day** is the week after the Memorial Service. I am delighted to tell you that The Chaplain in Chief of the Royal Air Force, The Venerable (Air Vice Marshall) Jonathan Chaffey has accepted an invitation to give the sermon at the Remembrance service in the Abbey and will join us at the War Memorial.

## Culham & District Horticultural Club

Meetings are held at the Abbey Guest House, Dorchester-on-Thames at 7.30pm



### Wednesday 15 November 2017

Julian Sutton will give an illustrated talk :

*'Beneath the trees: non woody plants for the woodland garden'*

Membership is open to all those who have a keen interest in horticulture (annual subscription £15) and visitors are welcome at the meeting

(suggested donation £2). For more details telephone **01235 850381** or email [judy@tiggercat.me.uk](mailto:judy@tiggercat.me.uk)



## Dorchester Village Hall 200 Club Prize Draw

Congratulations to the winners of the September draw.

1st Prize	£75	No. 134	Mrs C Moore
2nd Prize	£45	No. 88	Mrs P Fletcher
3rd Prize	£25	No. 45	Mr A Staniforth

The next draw will be in December, with a first prize of **£100** so join now for a chance to win!

The 200 Club is a quarterly prize draw to raise funds for the village hall. There are only 200 tickets and some are still available at £12 for the year (4 draws from when you join). To join, contact Elaine Moore on **340441** or email [admin@dotvh.org.uk](mailto:admin@dotvh.org.uk) for a form. Good luck!

## Abbey Guest House Extension

As reported last month, over the last couple of years Dorchester Abbey has been examining ways of improving and extending the toilet facilities at the Abbey and improving the administrative accommodation. The latest proposal will go on display in the Abbey from **8 November**. Groups with specific interests, and anyone else, will be invited to find out more information and make comments on the proposals.

## Christmas at the Museum Sunday 12 November

Please come to our Special Sunday Christmas Stocking Fillers on the **12 November** The museum will be opening from 2.00pm to 5.00pm with mulled apple juice and sweet cakes. The museum shop season will end that day and we will be offering lots of end of season offers.

**Sunday November 12, 2.00-5.00pm**

## Dorchester on Thames Historical Society

**Wednesday 22 November 2017, 7.30pm,**

Abbey Guest House (note change of venue)

Members free, Visitors welcome (£3)

**Ben Ford** on: *'Westgate Oxford: Initial results from Oxford's largest excavation - a prehistoric floodplain, a medieval Friary, Civil War defences and Victorian terraces'*

In 2016 Westgate Oxford won 'Archaeological Project of the Year'. This richly illustrated talk will bring you up to date with the ongoing work from the largest archaeological endeavour to have been undertaken in the City of Oxford. Ben Ford will discuss the changing landscape on the southern edge of the Oxford promontory, where the city meets the Thames Floodplain and how it was used and changed by human and natural action over the last 3000 years. The talk will touch on possible prehistoric and Late-Saxon activity, deal in depth with the extensive structural and artefactual remains of the Greyfriars complex (1244 - 1538), before revealing evidence from the Civil War, and the more recent Victorian terraces of St Ebbs.

Ben Ford - Director of the Westgate Oxford Excavations is a Senior Project Manager at Oxford Archaeology, who, for the last 20 years, has specialised in the excavation of urban environments, a passion that was first ignited whilst scampering around on the Roman bath-house excavations at an early age in his home town of Dorchester in Dorset. Since then Ben, has led many of the largest excavations to have taken place in some of Southern England's most significant towns and cities including Bristol, Reading, Winchester and Oxford, as well as undertaking large scale investigations at Hampton Court Palace, the Royal Arsenal in Woolwich, and Montpellier in southern France.





Hello Everyone,  
May I introduce myself as  
the new Chairperson of  
the Dorchester Allotments  
committee. My name is

Stuart Poole, I have lived in the village  
for just over a couple of years now and  
have spent most of my career in Horti-  
culture/Viticulture but until I came to live  
here I had never rented an allotment! So  
here I am with two allotments now to  
work on. Initially my wife and I took one  
on as we had been used to a large gar-  
den and we have absolutely loved it.  
Getting to know people while chatting  
about their latest crop successes (and  
failures!) has been lovely. Trading tips  
and sharing produce is wonderful and  
even though I have worked on some  
very large estates over the years as  
Head Gardener, I still say that there is  
always something I can learn when it  
comes to growing things. Thank you to  
all of you that have made me feel very  
welcome.

That said, I would like to say a big  
'Thank you' to Ed for his work as Chair  
over the years and to Mark for his work  
as Treasurer. We now have a new com-  
mittee of myself, Jon Rosby (Treasurer),  
Kate Watson and Bill Downey with Mark  
Townson and Ed Metcalfe staying on the  
committee.

I intend to send out a newsletter by  
email/mail to all allotment holders once a  
quarter to keep you up to date with what  
the committee is working on as well as  
some useful tips for your plot. I love to  
share my experiences but I want to hear  
other peoples suggestions too, so please  
email me or phone me if you wish to  
share something, see below for details. I  
also intend to update the website with  
the allotment rules and committee infor-  
mation etc.

On my plot at the moment we are trying  
to keep the dahlias going and hoping our  
late sowing of Florence fennel will get  
large enough before any frosts. Our  
pumpkins are ripening off nicely and  
other than dig up the rest of the pota-  
toes, we are having a big clear up and  
covering the ground.

Plots are available: just give me a call.

**Stuart Poole,**  
**Tel: 01865 340119**  
**M:07565 979689**  
**Email: [stu@horted.co.uk](mailto:stu@horted.co.uk)**

## Save the Fleur de Lys Public meeting Thurs 9 Nov

### Save the Fleur de Lys Calling for pledges

The campaign has moved into its next  
phase of collecting non-binding pledges.  
Every house in the village has received a  
form explaining the project and asking for  
non-binding pledges of financial sup-  
port. Residents of nearby villages are  
also being contacted

If you have not received a form, or  
wish to make a non-binding pledge, do  
please visit the campaign website  
[www.friendsofthefleur.com](http://www.friendsofthefleur.com) or contact  
[info@friendsofthefleur.com](mailto:info@friendsofthefleur.com).

### Public meeting

By the time you read this we will have  
a better idea of where the future lies.  
To find out the latest news come along  
to the **public meeting in Dorchester  
village hall at 7.30pm on Thursday,  
9 November.** Meet the project team,

find out more about the community bid for  
the Fleur, how the pub would be run if the  
bid succeeds, and the business case for  
it. Give us your ideas and priorities on  
how the Fleur could better serve the com-  
munity.



## Dorchester on Thames

Dear Readers,  
This month Greg Stores from the village  
gave us an interesting talk about Charles  
Dickens from a different angle. He fo-  
cused on Dickens interest in medicine  
and diagnosing conditions as well as his  
ways of advocating for the poor. Greg  
told us about how Dickens showed that  
interest in his stories.

On the 5 October we had a very enjoya-  
ble evening hosted by Wallingford WI at

the Cholsey Pavilion, a get together with  
supper for the whole of the Shillingford  
Group of WI. This includes Wallingford,  
Dorchester, Warborough & Shillingford,  
Cliften Hampden & Burcot, and Benson.  
Jonty Hearndon thoroughly entertained  
us with anecdotes and an antiques quiz  
defined by items that members had  
brought with them for information and  
valuation by Jonty.

For General information ,  
[www.thewi.org.uk](http://www.thewi.org.uk).

Please call Pauline on **340746**, Susan on **341066** or Hayley on **340119**. We  
meet on the second Thursday of the month at 2.30pm

## 'Heavenly Host' comes to Dorchester...

Would you like to make an **Angel or two**  
for the Abbey's "Heavenly Host" Project  
which will run from Advent to Epiphany?  
**Angels** will be placed around the village  
from December 4 onwards, for people to  
discover.

Please take a pattern (knitting, crochet,  
or simple yarn winding for non-crafters)  
from near the Bishops' Table at the rear  
of the nave. There are yarn kits if you  
need one to start off with, but do feel free  
to use any colours or design, as long as  
the total height is no more than 4 inches.

Please include a loop or tie so that the  
Angel may be put somewhere safely,  
ready to be found ...

The **Heavenly Host Angels** need to be  
at the Abbey by **10.15am** for the  
10.30am Advent Sunday Service, on **3  
December**; they may also be left in the  
"Heavenly Host" box in advance.

If you are not a crafter, do look out for  
the 'Heavenly Host' around the village  
from 4 December onwards ...  
**info 07596 524335**



## St Birinus Primary School News

The first half term seems to have moved very quickly, here are some of the highlights.

There was a musical flourish near the beginning of term for Amelie, Tabitha, Tommy, Tom, Charlie, Orvil, Joshua, Carys, Leo, Annabelle, Toby, Phoebe, Daniel and Cecily, who joined Mrs Flinders and me for a trip to see 'The Magic Flute' at the Royal Opera House, London. This was a special schools' matinee production and it was great to see the opera house full of excited children. As always, the children's behaviour and conduct was excellent – it was a great day! It certainly set me up for the term.

At the end of September we held our Harvest Festival, which for the last few years has been with the congregation of the Abbey during their Sunday service, however this year we returned to our own service. It was great to see the children leading the service and especially our new Foundation Stage children taking part with their pictures and homemade bread. During the festival, we had an amazing donation of food to give to the Wallingford Food Bank.

The current Foundation children have been the first group to experience our new Forest School curriculum following Mrs Harding's recent training. The children in their new water proofs, with money that was kindly donated by the Parish Council (for which we are extremely grateful) have spent several mornings on the Hurst Water Meadow for their first experience of learning out of the classroom. An exciting development for the school.

**Russell Leigh**  
Headteacher

**Dorchester St Birinus CE Primary School**



## Pre School News

The Pre-School children have been enjoying Autumn themed activities like painting with conkers. They have been working on the main board collage based on the book 'Owl Babies', adding feathers and leaves.

When this goes out we will have had the Pre School AGM and will have said goodbye to three of our valued committee members – Caroline Kilby, Amanda Budd, and our Chair Matthew Kestner. We would like to extend our warmest best wishes and gratitude to them for their invaluable contribution to the Pre-School over the last few years. We will also have welcomed some new members to the committee and thank them for giving a little bit of their time to helping the Pre-School provide the best early years education possible for their children. If you are still interested in helping out but can't commit to the committee then there is plenty of scope for helping out with gardening, DIY or fundraising activities. Just let manager Helen Morris or one of the committee members know. Thank you in advance.

**Louisa Margison**  
Pre School Secretary



## Swedish Christmas Table 'Julbord' Supper Clubs 1<sup>st</sup>, 2<sup>nd</sup> and 3<sup>rd</sup> December Dorchester Abbey Guest House

I'm looking forward to returning to the Abbey Guest House this December for the Swedish Christmas Table 'Julbord' Supper Club for the fourth year running!

If you have not been before you can expect a fantastic smorgasbord of hot and cold dishes - lots of cured, pickled and smoked fish, amazing cured venison, Swedish cheeses, meatballs and comforting potato and cabbage dishes, all home-cooked using traditional Swedish recipes. Swedish beer and snaps is available to purchase or you may bring your own wine.

Tickets can be purchased in advance by contacting me by email. You are very welcome to book as an individual, couple or group of friends. The company is always as good as the food and the beautiful candlelit Guest House creates a warm and friendly atmosphere.

£35 per head, including glass of fizz on arrival, three courses and coffee.

Friday 1<sup>st</sup> December 7.30pm

Saturday 2<sup>nd</sup> December 7.30pm

Sunday 3<sup>rd</sup> December 12.30pm (children welcome for a reduced price of £20 per head)

**Claire Andersson**

[Claire@claireandersson.co.uk](mailto:Claire@claireandersson.co.uk)  
[www.claireandersson.co.uk](http://www.claireandersson.co.uk)

## Hosting with HOSTUK 2017-18

**Do not neglect to show hospitality to strangers, for thereby some have entertained angels unawares. Hebrews 13:2** How true such advice can be. Hospitality is an equal partnership, the feel-good factor of offering it and the delight in receiving it.

HOST UK is a charity whose mission is to give a welcome to international students in British homes for friendship and cultural exchange. We operate *all* year round including Christmas and New Year when being welcomed into a home is vastly preferable to lonely halls of residence.

Hospitality can be offered for one day (daytime only), three days and two nights at the weekend, or at New Year, or four days and three nights during the Christmas festive period.

The choice is yours. **And remember...your offer can be made at any time of the year.**

If you should like to know more please look at our website:

[www.hostuk.org](http://www.hostuk.org)

Or email us on: [info@hostuk.org](mailto:info@hostuk.org)

Or telephone us on: **020 7739 6292**





# REALMS OF GLORY

## A CELEBRATION OF ANGELS

22ND OCT 2017 - 6TH JAN 2018

### AT DORCHESTER ABBEY



EXHIBITION, CONCERT, CHILDREN'S WORKSHOPS AND TRAIL

[www.dorchester-abbey.org.uk](http://www.dorchester-abbey.org.uk)

### REALMS OF GLORY A CELEBRATION OF ANGELS

Dorchester Abbey will be hosting a Celebration of angels with an exhibition, interactive family themed workshops and a Celebration of Angels in Music concert which is open to everyone. The exhibition will be open from **22 October** until **6 January** between 9.00am to 4.30pm, excluding services.

Central stage will be given to a series of hanging angel painting reproductions with kind permission from the National Gallery in London. An angels trail will lead the visitor through the Abbey, exploring the role of angels in the journey of life.

Half term fun can be had at daily angel themed craft workshops geared towards primary school age children. A choice of afternoon sessions are available to keep the kids entertained and happy including make your own; trumpets, stained glass angels plus wings and halos.

A draw your own guardian angel competition is open to all ages. The concert will be held on **Wednesday 29 November** at 6.30pm. Check the Dorchester Abbey website for more information: [www.dorchester-abbey.org.uk](http://www.dorchester-abbey.org.uk)

### Workshops

**Half-Term, 1.30-3.30pm**

22/23 Oct: Angelic Angels

24/25 Oct: Stained Glass Angels

26/27 Oct: Angelic Trumpets

**Saturdays, 1.30-3.30pm**

28 Oct/25 Nov: Wings & Haloes

4 Nov/2 Dec: Angelic Angels

11 Nov/9 Dec: Stained Glass Angels

18 Nov: Angelic Trumpets





# Have you seen the signs?

According to rightmove , In House sell more Dorchester properties than any other agent!

Owned and run by a Dorchester resident, In House are pleased to offer discounted selling or letting rates to fellow residents!

Call **01491 839999** or visit our website to book your free valuation

[www.inhouseestateagents.co.uk](http://www.inhouseestateagents.co.uk)



Anderson | Orr  
Architects



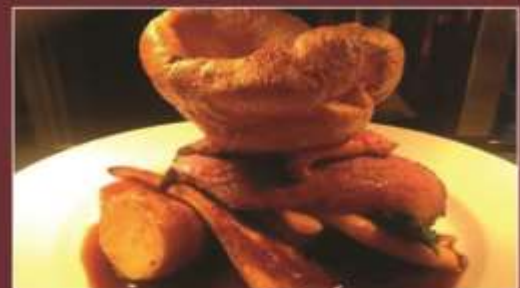
Contact us for a free and informal discussion about your project

01865 873938

[info@andersonorr.com](mailto:info@andersonorr.com)

[www.andersonorr.com](http://www.andersonorr.com)

## A 'Harty' Sunday



Enjoy a super Sunday Lunch  
at The White Hart  
in delightful Dorchester on Thames  
SERVED FROM 12 NOON THROUGH TO 8PM

*A choice of three roasts as well as fish, chicken  
and vegetarian options - £18 for two courses.*



**10% off when you join the  
Oxfordshire Hotels restaurant club**



White Hart Hotel Restaurant  
Dorchester on Thames, Oxfordshire

**01865 340074**

[www.white-hart-hotel-dorchester.co.uk](http://www.white-hart-hotel-dorchester.co.uk)





---

# Dorchester St Birinus School Family Bingo Night!

## Friday 24th November

Dorchester school hall

BBQ, great prizes, raffle, bar  
&

**B I N G O**

Everybody welcome!

Doors open 6pm  
Eyes down 7pm

Tickets £3 per person from Lily's Tea Room and the Co op  
Price includes entry, raffle and meal voucher!  
(£1 tickets for entry and raffle only)

Bingo cards £5 on door

raising funds for Dorchester School PTA

# The 2017 Dorchester Abbey Christmas Cards Sold in aid of Dorchester Abbey

© Nick Forman



Victorian wall painting of the Annunciation from the Lady Chapel 9 x 20cm

These cards are sold with envelopes in packs of 10 for £4.50 and are colour printed on glossy quality card with 'Happy Christmas' inside and 'Sold in aid of Dorchester Abbey' on the back.



© Frank Blackwell

To buy your cards please complete the form below and send it with payment to:  
Steph Forman, 73 High St, Dorchester-on-Thames, OX10 7HN  
**(01865 340434) [steph@forman.org.uk](mailto:steph@forman.org.uk)**

Nativity scene from the East End window 17.6 x 12.5cm

Orders received by the end of October will be delivered by mid Nov.  
Cards can be pre-printed with personal or company information for a small additional fee if ordered by 25 Oct.

Cards can also be bought from the back of the Abbey and the Museum from November onwards. Previous years' cards are also available

I would like to order ..... packs of 10 Annunciation paintings & envelopes @ £4.50 + p&p\*  
I would like to order ..... packs of 10 Nativity Scene & envelopes @ £4.50 + p&p\*

Please deliver to the address below:

Name ..... Contact telephone no:.....

Address .....

Email .....

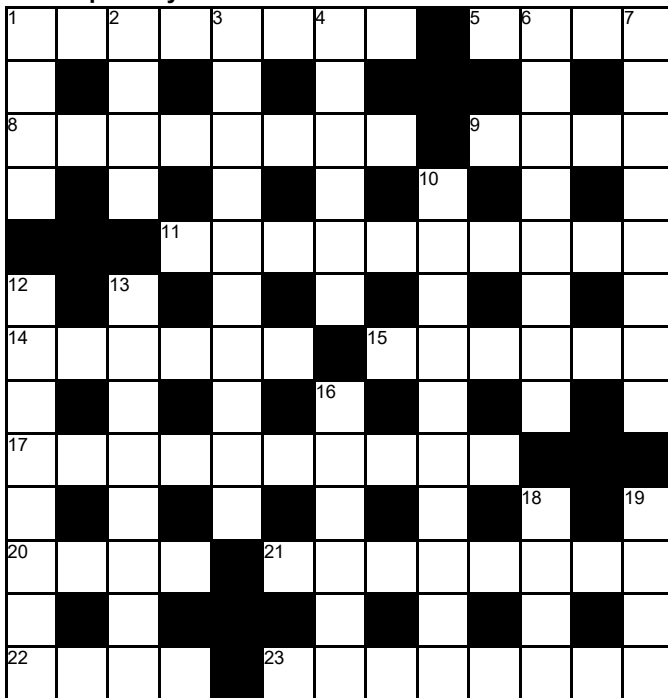
I enclose a cheque/cash for £.....  
Cheques should be made payable to 'Dorchester Abbey PCC'

\*Delivery in Dorchester-on-Thames free of charge.  
Postage for 1-3 packs - £2    4-8 packs - £3    9-20 packs - £13



# The Dorchester News Crossword

Compiled by Slider



Across

- 1 Not so good when you are old - some backchat may help. (7)  
 5 Business and work - useful for everybody in Dorchester! (2-2)  
 8 This will put you to sleep an Easterner was heard to say (8)

- 9 Tired but not unknown, still tire. (4)  
 11 Get in the altogether in the Abbey? (10)  
 14 Like one missing from the case- Heavenly. (6)  
 15 Seem to arrive before the judge. (6)  
 17 Certainly not big-time early on. (5,5)  
 20 A star's article on the greenstuff. (4)  
 21 Heard to get together before a period at sea (8)  
 22 Baccarat excites somewhat and has a hidden cost. (4)  
 23 Despoiled, mixed up after losing drug and unbalanced. (8)

Down

1. Quiet please - the graduate is going ahead to hit the party.... (4)  
 2 ...or maybe two parties, and now the bird has disappeared. (4)  
 3 An associate after a race across the land. (10)  
 4 The dragon man is a boozier! (6)  
 6 Edward followed Norma and worked in the theatre. (8)  
 7 Make a bit of a mistake with the last of one formal garden. (8)  
 10 i.e. a trap set to break up genteel gatherings (3 - 7)  
 12 Next question finished and saved long ago. (8)  
 13 A good man with an article in hand, honest! (8)  
 16 Unproductive hunting for the island. (6)  
 18 Berlin's song was not true. (4)  
 19 Wander with purpose. (4)

## Dorchester Window Cleaning Service

We provide a friendly reliable service every 5-6 weeks.  
 Free quote—no obligation. Est 1990

Contact Craig Taylor

Tel: 01235 512881. Mob: 07778 661548

[www.elitewindowcleaningservice.com](http://www.elitewindowcleaningservice.com)

A bill can be left for postal payment if you are not home.

Online payment also welcome.

Other services include: Conservatory roof cleaning; Fascia cleaning; Gutters unblocked & cleaned out.

## FOR A BEAUTIFUL GARDEN

Choose from our wide range of quality garden services: design and construction, plants and maintenance. We tailor-make our service for you.

For a free, no-obligation visit and written estimate from RHS qualified staff, call 01844 279430,

or email [info@brannfordsgardens.co.uk](mailto:info@brannfordsgardens.co.uk)

Full details at [www.brannfordsgardens.co.uk](http://www.brannfordsgardens.co.uk)



## ALTOM TREE CARE LTD



Tree Felling  
 Height Reductions  
 Stump Grinding  
 Landscaping • Fencing  
 Grass/Hedge Cutting  
 Patios • Turfing  
 Maintenance Contracts  
**SEASONED LOGS  
 FOR SALE**

For a reliable, professional service

Mob: 07958 759747

**01844 339 833**

FULLY INSURED & FREE QUOTATIONS

Email: [altomtreetree@gmail.com](mailto:altomtreetree@gmail.com)

[www.altomtreetree.co.uk](http://www.altomtreetree.co.uk)

## BODY CONTROL PILATES®

BCP level 3 certified teacher specialising in back & joint care, sports rehab, pre & post natal and Parkinsons Disease

Beginners and Mixed Ability Classes in Benson and Dorchester On Thames

121 sessions available for personalised programmes

To book contact Claire on 07801 298 978

[www.millstreampilates.co.uk](http://www.millstreampilates.co.uk)

[claire@millstreampilates.co.uk](mailto:claire@millstreampilates.co.uk)

**Here to help you find and book the perfect holiday....**



Arranging a holiday can be very frustrating and challenging. But with Full Circle Travel, it doesn't need to be.

- We are a local, independent travel agent with mature, professional and well-travelled consultants.
- You do not pay more for our service but get a lot more than booking direct.
- You can book with your favourite tour operator but book locally.
- We are ABTA and AITO members and ensure your money is safe in an uncertain world.
- We listen, we care and are passionate about finding you the perfect holiday.
- Search 'Full Circle Travel' at [www.trustpilot.co.uk](http://www.trustpilot.co.uk) to read what our clients say about us.

A selection of operators you can book with us at no extra cost to booking directly:

Club Med - Cox and Kings - Abercrombie and Kent - Mark Warner - Audley Travel - Explore - The Adventure Travel Company  
Royal Caribbean - Carrier - Western & Oriental - If Only - Beachcomber - Exodus - Kuoni - Viking River Cruises - Seabourn  
Riveria Travel - Silversea - Regent Seven Seas - Classic Collection - Prestige Holidays plus many more - please just ask.

Full Circle Travel, 59 St Marys Street, Wallingford, OX10 0EL

[www.fullcircletravel.co.uk](http://www.fullcircletravel.co.uk)

T: 01491 833227

E: [holiday@fullcircletravel.com](mailto:holiday@fullcircletravel.com)



# Beauty Essentials

Indulge yourself  
in a full range of  
Beauty Treatments  
& Therapies

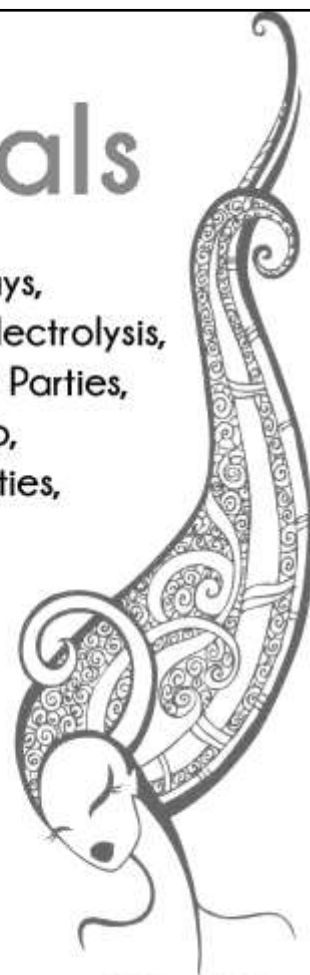
Manicures & Pedicures, Gel Overlays,  
Facials & Eyelash Tints, Waxing & Electrolysis,  
Massage & Spray Tanning, Pamper Parties,  
Bridal & Special Occasion Makeup,  
Children's Glitz & Glam Sparkle Parties,

GIFT VOUCHERS & REGULAR SPECIAL OFFERS  
VISIT OUR WEBSITE FOR DETAILS

Beauty Essentials, Rear of 81 High Street,  
Wallingford, OX10 0BX

[www.beautyessentialsoxon.co.uk](http://www.beautyessentialsoxon.co.uk)

07583 371198







### Autumn Tournament winners



Congratulations to Sue Graney and Jordan Lyne, pictured with Chris Smith, on winning the Autumn Tournament.

Well done to Rachel Marriott and Alan Woodley for winning the doubles ladder, which was played throughout the summer.

### Tennis Club Quiz Night

Thank you everyone who attended the Quiz Night on Saturday 14<sup>th</sup> Oct in the village hall. 11 teams battled it out through 11 rounds with the eventual winners being 'Lambshank Redemption', closely followed by 'Fizzy Fridays' and 'The Late Comers'. We raised £680 on the night which will go towards the upkeep of the courts, specifically the playing surface next season. Thank you to all the helpers, cooks and contributors.

Remember, if you would like a game of tennis, the club plays on Sunday morning – everyone welcome.

Mark Jones



### Earth Trust November events

#### Hedgelaying

**Saturday 18 and Sunday 19 November, 9.30am to 4.00pm each day**

A very practical, hands-on two days learning to lay a Midland style hedge with expert Clive Leeke. Find out all about this traditional skill on the job. All specialist tools and equipment provided. For beginners and those who wish to gain more experience. £75; booking essential: book online (incurs a fee) or call **01865 407792** during office hours.

Online bookings can be made at [www.earthtrust.org.uk](http://www.earthtrust.org.uk) and may be subject to a booking fee.

As always, more information can be found on our website [www.earthtrust.org.uk](http://www.earthtrust.org.uk). All events take place at the Earth Trust, Little Wittenham, OX14 4QZ unless otherwise stated.



### Football Results Oxford City League First Division



16/09/2017	Thame United Churches First	0	6	Dorchester First
23/09/2017	Florence Park	6	1	Dorchester First
7/10/2017	Dorchester First	0	1	East Oxford First
14/10/2017	Dorchester First	3	6	Original Swans First



### Royal British Legion

This is the final call for volunteers to join the committee of the Dorchester and District branch of the Royal British Legion.

The branch was established in 1952 and has been raising money for the charity and supporting ex service personnel from the poppy appeal and local events for the past 65 years.

The remaining committee members have been busy running the branch for the past 30 years.

Due to diminishing membership and a lack of volunteers willing to serve on the committee and act as officers for the various roles, it has been decided that we can no longer continue as a full independent branch. If the branch closes, we can no longer hold the Remembrance Sunday Service with the parade and band at the War Memorial as these activities would not be permitted under the RBL Standard.

We can, however, continue to fund-raise and hold the Remembrance Sunday Service if we become a sub-branch of another branch e.g. Benson RBL Branch.

If we get some volunteers for the committee then the branch can remain as it is, if we do not receive any volunteers then our only alternative is to become a sub branch of the Royal British Legion which will permit us constitutionally to hold the Remembrance Service with band and Standard at the War Memorial. The Benson branch has agreed to be our parent organisation in that event.

The AGM will be held at the White Hart Hotel, Dorchester at 7.00pm on **Friday 17 November 2017** to formalise the decisions that need to be made for the future.

Remembrance Sunday Service at the Abbey followed by the service at the War Memorial is on **Sunday 12 November**, see Dorchester News for details.

Should anybody be interested in joining the committee please contact me on **07831 392343** or [simoncmadden@gmail.com](mailto:simoncmadden@gmail.com), you do not need to be ex service to join.

**Simon Madden.**  
Chairman

**T**iger prawns; tempura; opium poppies; soya beans. Are we in Asia? Geoffrey's Chaucer's daughter; medieval alms houses; open field systems; squealing piglets running free; perambulating 'The Ladies' Walk'; Martin Luther nailing his religious objections to the church door; harvest festival decorations? Is this medieval England? No, its Ride & Stride day 2017 style - and all in a day's walk between churches around Dorchester.

Being drowned out on last year's walk did not put us off; Susan Jupp, Judy Parker and Richard Farrant recruited David Parker and Hugh Farrant to join them in walking to the churches of Dorchester, Ewelme, Swyncombe, Britwell Salome, Cuxham and Brightwell Baldwin.

We started well, registering early at the Abbey lychgate in perfect walking weather. More frustrating was the securely locked door to the entrance of the catholic church. We debated nailing a Martin Luther style condemnation of late waking hours on a Saturday, but decided *He above* would be aware of the situation and would take care of it for us. Anyway we had no nails, pencil or paper, and it would be a pity to damage the paintwork.

By the time we reached it, Ewelme church was ready for us. She's a beauty, spacious without being big, wonderfully lit by a range of clerestory windows, and adjoining the medieval alms houses and school, the whole range of buildings climbing the hillside into which it nestles. Geoffrey Chaucer's granddaughter was instrumental in its building and is buried in a lovely tomb there. Thankfully not much has changed since, apart from the luxuries of heating and electric light.

The walk to Swyncombe took us up the dry valley out of Ewelme into the Chilterns, much of it labelled 'The Ladies Walk'. The imagination runs wild as to the source of the name - the reality is that it is just a pleasant uphill grind through farmland. Compared with Ewelme, Swyncombe church is older (Norman), darker and tiny. Hardly surprising when you consider it has no village near it; yet it remains in use. Apart from the signpost you would not realise you were passing it on the road above, so deeply is it buried in the valley. The old rectory next to the church is a larger and more luxurious building, telling us something about the status of clergymen in the 18th and 19th century.

## Ride & Stride 2017



On a flat map, the next section of the walk looked easy. On the ground, Swyncombe's position meant it was a steep uphill to crest the scarp of the Chilterns to get to Britwell Salome. Its church is also isolated, but in this case there is a village and perhaps for this reason the church is less modest. It is also much less ancient,

**Over £1000 raised by  
Dorchester's Ride & Striders**

having been largely rebuilt in gothic revival style in the mid 19th century. Like Swyncombe, there is a much more impressive rectory next door, this time 17th century remodelled in Georgian times. All gorgeous red brick and sash windows, it looks down over the church as a cat looks down on a mouse - with interest, but knowing who's boss.

I confess by now my main interest in Britwell was lunch at the Red Lion. Greeted at the door in French by the proprietor, I foolishly responded in kind and was immediately overwhelmed by a blizzard of more French, forcing a humiliating retreat back to English. After that things could only get better, and they did. Could tempura tiger prawns really be as good as they sounded? Yes they could. Our initial modest intention just to have a starter morphed into a full blooded meal as we all succumbed to the delicacy of the food. Fortunately we had arrived quite early; we certainly left late.

The path to Cuxham was easy enough. We were full and happy, and even the rain shower seemed no more than an inconvenience. We were also able to study at

close hand the field of cultivated poppies, no doubt grown under heavily regulated conditions for medical purposes. Britwell hardly seemed the place for drug trafficking.

The Ride & Stride banner at Cuxham was attached to the former school house for a very good reason - this was where the tea and cakes were. Lunch was only a couple of miles back, but it suddenly seemed much further! The school house itself may be of modest interest, but it has a fascinating series of information boards about Cuxham's history, including maps of the medieval open field system, all sourced from the archives of Merton College, Oxford, which acquired the

Manor of Cuxham in 1270. The church, when we finally turned to it, is a typical village church; old in most parts (14th century with a Norman stubby tower). The interior was decorated ready for harvest festival in the traditional way: small vegetables on every horizontal surface, and strawbales and small sacks of corn seed surrounding the font. It was charming - but not for everyone. Next to a seed pile was a primed mousetrap - are mice not qualified to enjoy the bounties of harvest?

Cuxham to Brightwell Baldwin is no more than an easy 1/2 mile. Brightwell is a delight, tiny, very rural but well formed. The church is surprisingly large for such a small village. We did not dally, as we were scheduled to return for an evening meal in the Lord Nelson there once we had finished the walk back to Ewelme.

Walks tend to become less interesting as the afternoon stretches out and the landscape certainly seemed to become less varied. Then coming out of a copse we found ourselves walking alongside a very large pig field. Every sow had its own sty in the middle of its own patch of quagmire, and its own litter of marauding, squealing piglets quite undaunted by the surrounding electric fences which they simply ran under. There were hundreds, perhaps thousands of animals. Factory farming with charm.

So there you have it. A walk in the English countryside. Maybe not an exciting prospect, but in the event often more interesting. Definitely worth doing, and that's before you consider that you are raising over £1,000 for a good cause.

**Richard Farrant**



## Felicity Anne Jarman 1924-2017

My very dear cousin and godmother, Felicity, was born at Marcham in 1924. She was a farmer's daughter - the middle one of three children with an older sister, Pauline, and the youngest, her brother, Christopher, always known as Chris.

The family soon moved to East Challow where her parents, Walter and Alice Long, ran a farm, keeping dairy cows and selling the milk locally.

It was a very happy rural childhood. Felicity was rather a tomboy; a champion climber of trees, a persistent winner of running races. This athleticism continued when, after her first school years at St Katherine's Wantage, Felicity won a scholarship to Christ's Hospital Girls' School, then based at Hertford, where her talent for games was encouraged. She was appointed Captain or Vice Captain for several sports – cricket, netball and hockey but gymnastics also got a look in and she regularly won the high jump on sports days.

In her final year, she was appointed Head Girl but, leaving school before the end of World War II, was unable to take up the offer of a place at Westfield College, London to read Modern Languages as her call-up date fell due before the University term began.

Felicity volunteered for the WRNS. I asked her once why she had chosen the Senior Service – 'oh, the colour and a Wren's uniform was by far the smartest', she said. After basic training and then a writer's course, she was posted to Devonport and began secretarial duties in the commodore's office.

Some of the naval discipline proved irksome but the work was enjoyable with its demands for accuracy and timeliness, of doing a proper job, dotting the i's and crossing the t's with a vengeance. The recommendation for a commission was not taken up and Felicity returned to civilian life, eventually beginning a job in Oxford that of Secretary to the Organiser of the Oxfordshire Association of Boys' Clubs, Leslie Bickerton.

Family was always precious to Felicity. A great sadness and shock had been in 1938, when, at the age of only sixteen, her sister Pauline died suddenly of peritonitis. By the end of WWII, her parents had retired from the farm at East Challow and had bought a house at Eynsham. Chris had left home at the start of his agricultural career.

Spending weekends at Eynsham with her parents, Felicity lived in a variety of rented rooms in Oxford until she accepted an offer of lodgings with Leslie and Rene Bickerton and in January 1948 moved with them to Tudor Cottage.

This marked the beginning of her long association with this village. Working in Oxford meant catching the early morning bus at seven o' clock - a long working day - but Felicity found time to join the Tennis Club and umpired netball matches on the Recreation Ground, enjoying making new friends and worshipping at the Abbey.

In 1960, Felicity took up the post as Headmaster's Secretary at Southfield School, then a Boys' Grammar School and helped to organise the merger of Southfield with the City of Oxford High School – to form Oxford School in 1966.

For a while, she left Tudor Cottage to help care for her mother in her final illness and continued to live with her father at Eynsham until the decision was made for her beloved father to

move to Canada to live with Chris and his family. It was hard to say goodbye.

With the Eynsham house sold, a Red Letter Day came in September 1968 when Felicity bought her bungalow in Haven Close. So many of us know that address by heart!

Taking early retirement in 1978, gave Felicity time to immerse herself in village life. She had been looking forward to this. Opportunities abounded for differing hobbies and pastimes especially for such a kind and loyal person with a quick brain, a conscientious nature and good organisational skills – she was a stalwart helper at the Abbey Tearooms, an ever-willing assistant at the village Lunch Club, a co-ordinator of regular lunches for groups of friends, an oiler of wheels behind the scenes.

It was a delight when, after some time of growing friendship, Felicity Long and Tony Jarman married in 2002 and here was more family to care for her and to be cared for in return. It was sad that this happy marriage lasted so short a time for Tony died in 2006.

There was more sorrow when her brother Chris died some two years ago. Felicity was distressed not to be well enough to travel to Canada for his funeral.

Felicity's Christian faith was her life-long mainstay. She loved this great Abbey and taking part in parish life. She loved living in this village.

We all have special memories – of her kindness and gentleness, her sense of humour and her steadfastness. She was self-effacing, never sought the limelight and valued her privacy. She appreciated the absurdities of Life and rejoiced in simple things – dark chocolate, cryptic crossword puzzles (the more cryptic the better), a glass of red wine, good company. She was a keeper of confidences and a rememberer of birthdays.

A country girl at heart, Felicity loved the natural world, delighting in its many aspects. The ever changing view from her sitting room window was a continuing pleasure – particularly in recent years when Life became an increasing struggle for her.

How aptly did her parents name her – Felicity – that is the state of being happy, a Blessing, Appropriateness.

'Do as you would be done by', an old family saw, echoes down the years. A lifetime of Love and Service to others.

Felicity Anne Jarman – a very special lady.

*Written and read by Jenny Charter at Felicity's funeral in Dorchester on Thames Abbey, 26 September 2017*

### T.W Hayden Heating Services

Tel: 01865340720

Mobile: 07813904055

E-mail: Twhayden@tiscali.co.uk

All plumbing and heating works undertaken.  
Free estimates.

15 Fane Drive, Berinsfield,  
Wallingford, Oxford, OX10 7NB

## Shirlee Hazell 1936-2017

With Shirlee Hazell's death, one more link with old Dorchester is broken. She was born in Dorchester on 13 November 1936 and lived in Dorchester for almost her whole life, until at the last she was cared for at a kindly nursing home in Burford.

Shirlee was part of a large family. Her parents, Albert Edward and Beatrice May Hazell had four sons: Keith, Michael, and David and Peter, who were twins, and three other daughters, Pearl, June and Linda.

Shirlee went to Dorchester infant and secondary schools, which were then in what is now the Village Hall. She remembered going, every Sunday, to the sweet shop with her siblings, for a bag of sweets, which was supposed to last them

for the whole week.

When she was older she had a job in engineering at Joe Pratt's Forge in the village. She went on to join the army in November 1956 and served in it for seven and a half years. She then worked for several years at RAF Benson.

Shirlee was a big Tottenham Hotspur Fan; she also loved her dogs, Cindy, Carla her favourite and Ninca. She used to take her sister Linda's children, Simon, Julie, and Jane fishing and swimming in the Thames. She played darts a lot and was very good at it.

She lived for some years in Tenpenny

and in her later years was often out and about on her scooter, up by the bridge chatting to friends about old times. As one friend said, 'She was a warm, welcoming person and who took an interest in other people.' At one time she ran a small bookshop outside the tearoom at the Abbey to raise funds for it.

Towards the end of her life, she slipped and broke her ankle and then had a knee operation. Her health never really recovered and she spent her last two years in Burford.

Parting is always a sad time, but through the centuries people have gathered in this Abbey to say good bye, but also to take comfort from their belief that just as Jesus rose from the dead on Easter Day, so we too will share a new life with Him.

## Janet Brindley Glover 1955-2017

Jan grew up in the Lake District with her sister, Sarah, and brother, Tim. She was a determined and mischievous child whose early years were spent walking, cycling, sailing, fishing and swimming in the lakes.

Jan and Richard were married in Cartmel Priory on 2 October 1982. Five years later William was born, and Victoria two years after. The family spent 23 happy years living in Newington.

Her determination, focus and hard work meant she excelled at everything she undertook – notably in sport where she played lacrosse for Scotland and, of course, golf.

Jan joined the Oxford Ladies Golf Club nine years ago and, as with everything else, threw herself fully into the game. By 2015 she was Lady Captain with a single figure handicap and an extensive range of silverware. She is remembered for her warmth and energy, with so much fun and laughter both on and off the golf course.

Jan was as optimistic as possible when she became unwell; she didn't really want people to know about it because she wanted everyone to treat her as they always had - and she faced the illness with absolute courage.

## Janet Turner

Janet Turner, who lived in Dorchester-on-Thames with her late husband Doug from 1997 to 2011, has died at Autumn Lodge, Brighton aged 80.

Janet was resident in Chesterfield, Derbyshire for 30 years, where she taught at several primary schools, and finished her career as a Headteacher. Janet and Doug moved to Queens Close, Dorchester-on-Thames, following Janet's retirement 20 years ago and spent 13 very happy years in the village. Janet and Doug became actively involved in the life of the Abbey and in many other village activities such as the Festival.

Following Doug's death in 2011, Janet moved to Brighton to live near her daughter Kate, and continued to have fond memories of her time in the village.

Janet leaves a daughter Kate, son Richard, sister Susan and step-children Mark, Clare, Simon and Sarah. Janet's funeral took place on Monday 2 October in Brighton. Donations to The Lewy Body Society, c/o Sussex Funeral Services, 230 Eastern Road, Brighton, BN2 5JJ (tel. **01273 670066**)



**CHIMNEY SWEEPING  
COMPANY  
LTD**

★ NO FUSS ★  
★ NO MESS ★  
★ NO PROBLEM ★

Oxford	01865 772 996
Stadhampton	01865 400244
Deddington	01869 337500
Mobile	07711 443050

**AKT | Planning+Architecture**  
Chartered Town Planners and Architects

AKT is a small established local practice based in Dorchester with a wealth of experience in all aspects of planning and architecture. We pride ourselves in providing a personal and bespoke service and have experience with listed buildings and conservation areas.

Contact Sarah or Paul King for an informal chat to discuss your ideas or projects.  
Tel. 01865 340989



www.archkingtech.co.uk



A member of the Royal Town Planning Institute and Royal Institute of British Architects





**IT'S BACK WITH A BANG...**

**Dorchester on Thames  
Village Firework Display  
Sunday 5th November  
at the Recreation Ground**



**Food and drink served from 5.30pm**  
Locally sourced burgers and hot dogs, Winter Pimms  
and tray bakes and much more

Bring the family for tea and enjoy a selection of stalls  
*Lighting of the bonfire at 6pm*

Entrance by voluntary  
donation with all profits  
going to FOOTSTEPS



(Please...NO SPARKLERS)

## According To Rumour: It's A Farce!

22 to 25 November

Dorchester-on-Thames Amateur Dramatics Society (DADS) are bringing Robert Scott's fast-paced comedy *According To Rumour* to South Oxfordshire this November.

When Carter Sutton wakes on his sofa with no memory of the night before, he doesn't realise that things are going to get much worse! He's soon reeling from discovering a very large sum of money in his fridge and a stream of unexpected, and unwanted visitors. But this is only the start. This will be 24 hours that none of the participants will ever forget.

Written by award winning playwright Robert Scott, *According To Rumour* provides all the classic ingredients that you would expect from a farce: mayhem, misunderstandings, hilarity and a whole lot of confusion. First published in 2015, *According To Rumour* is fast becoming an international success, the play has already been performed as far afield as Australia.

Rachel Winslet-Morris, Director says, 'I reviewed quite a few plays but, as soon as I read *According To Rumour* I knew that our audience would love it. It's funny to read but, in rehearsal the cast are developing their roles in ways that are bringing

even more comedic depth to the story as it unfolds. It's been great to welcome some new talented actors to the group as well as work with some of our more experienced members.'

*According To Rumour* will run from **Wednesday 22 to Saturday 25 November** in Dorchester on Thames Village Hall. More information and tickets are available at [www.dads.org.uk](http://www.dads.org.uk)



## Footsteps Foundation

Hello to all our Dorchester readers. I hope that everyone is enjoying the wonderful autumn colours and that you are looking forward to the festive season. Here at Footsteps we have some promotions for Christmas. We are selling some organic hand-knitted soft toys, specially made for us by the wonderful village business Chunki Chilli – we are in love with the bunny toy and monkey hand puppets wearing Footsteps t-shirts! Please see our new merchandise section on the website, or pop into Footsteps.

We will also be holding a raffle to win a luxury Christmas hamper full of edible goodies and drink – please see our website [www.footstepscentre.com/footsteps-foundation/](http://www.footstepscentre.com/footsteps-foundation/) and Facebook page for more details in late November.

Would you like to donate to Footsteps Foundation and see your donation doubled? Any donations we get from the general public for the month of December will be doubled, as a kind donor has offered to match any gifts coming in this Christmas!

Many thanks to all our supporters who have helped disabled children to get the specialist physiotherapy they need, right here in the heart of beautiful Dorchester!







# THE SPRINGS GOLF CLUB

## A remarkable venue for golfers

The Springs sits in a beautiful part of the Oxfordshire countryside, nestled alongside the River Thames, and has become the second golf club in the Darwin Escapes portfolio of holiday parks. The beautiful club house combined with the challenging and picturesque course, made The Springs an ideal acquisition for Darwin, and we will be utilising our expertise and experience to ensure that the golf and leisure facilities at The Springs are amongst the best in the area.

TO DISCOVER MORE VISIT:  
[www.thespringsgc.co.uk](http://www.thespringsgc.co.uk)

- Golf Course designed by Ryder Cup Legend Brian Huggett MBE
- 133 acres of parkland in an Area of Outstanding Natural Beauty
- Competitive Golf Membership Packages
- Golf Days available for Non-Members
- Luxury Tudor Style Clubhouse on-site
- 240 yard Practice Range



[www.darwinescapes.co.uk](http://www.darwinescapes.co.uk)



**The Springs Golf Club**

Wallingford Road, North Stoke, Wallingford, Oxfordshire OX10 6BE  
 Telephone: 01491 827 300 Email: [thesprings@darwinescapes.co.uk](mailto:thesprings@darwinescapes.co.uk)





**MEMBERSHIP  
PACKAGES**  
AVAILABLE FROM  
**£356**

Darwin Escapes recently acquired The Springs Golf Club in Wallingford, Oxfordshire and have quickly invested in some fantastic on course equipment to further enhance our Brian Huggett MBE designed golf course.

We are just about to take delivery of a brand new Sprayer for our greenkeeping staff to use on the golf course to further enhance our playing surfaces and are in talks with major golf course turfcare companies to invest in a brand new fleet of on course greenkeeping machinery.

Other on course additions have seen new bunker rakes, ball washers, bins and tee markers, as well as new flags, pins and hole cups to further enhance the golfing experience when teeing it up at The Springs!

A brand new fleet of golf buggies are now in position, available for hire for both members and visitors. We have also invested in a full time Golf Team as well as increasing our Grounds Team.

Over the next few months you will see a refurbished golf shop stocking some of the best brands such as Callaway Golf, Taylormade, Ping, Motocaddy, Odyssey, Under Armour, Nike and Glenmuir.

**WINTER WARMER  
GOLF PACKAGE**  
1st Oct 2017 - 28th Feb 2018

**Bacon roll, tea or  
coffee, followed by  
18 Holes of Golf**

**ONLY  
£19.00**  
PER PERSON

“Come and play at The Springs on the banks of the River Thames in beautiful Oxfordshire. This sporty challenging course was designed for the club golfer. Good golfing!”

**Brian Huggett MBE**

The Springs Golf Club  
Wallingford Road, North Stoke, Wallingford, Oxfordshire OX10 6BE  
Telephone: 01491 827 300  
Email: [thesprings@darwinescapes.co.uk](mailto:thesprings@darwinescapes.co.uk)

All bookings must be made in advance and are valid 7 days a week. Subject to availability To book please call us on 01491 827300 or email: [thesprings@darwinescapes.co.uk](mailto:thesprings@darwinescapes.co.uk)





# FESTIVE CELEBRATIONS

AT  
THE SPRINGS  
GOLF CLUB



## FESTIVE BANQUET NIGHT

9TH AND 16TH DECEMBER

Perfect for celebrating with colleagues, companions, family and friends

### STARTERS

Homemade Apple and Parsnip Soup topped with Crème Fraîche and Truffle Oil

Traditional Prawn Cocktail served with Brioche Croutons, Lettuce and Fresh Bread

Goat's Cheese and Caramelised Red Onion Tart served with a Balsamic Reduction

### MAINS

Roast Breast of Turkey served with Cranberry and Tarragon Stuffing, Pigs in Blankets, Goose Fat Roasted Potatoes, Honey Glazed Vegetables, Gravy and Bread Sauce

Honey and Orange Glazed Salmon on a bed of Braised Red Cabbage served with Goose Fat Roasted Potatoes and a Ginger Reduction

Wild Mushroom and Chestnut Wellington served with Honey Glazed Vegetables and a Mushroom Sauce

### DESSERTS

Christmas Pudding served with a Homemade Brandy Sauce and Cream

Dark and White Chocolate Mousse served with Hazelnut Praline and Caramel Sauce

Vanilla Panna Cotta served with a Passion Fruit Coulis and Fresh Mango

**£29.95**  
PER PERSON

7:00pm Glass of fizz on arrival  
7:30pm Dinner is served  
Carriages at midnight

Deposit £5.00 per person  
Pre-Order Required at time of booking  
Minimum of 6 guests per booking

## FESTIVE FEAST PARTY NIGHT

AVAILABLE FOR PRIVATE FUNCTIONS

Dance the night away with friends and family

### BUFFET INCLUDES

Bacon Stuffed Sausage Rolls  
Turkey and Cranberry Sandwiches  
Beef and Horseradish Sandwiches  
Brie and Cranberry Sandwiches  
Chicken Skewers and Sweet Chilli Dip  
Rosemary and Garlic Potato Wedges  
Smoked Salmon and Cream Cheese Pinwheels  
Tomato, Mozzarella and Basil Bruschetta  
Mini Cheesecakes  
Mince Pies

**£21.95**  
PER PERSON

7:00pm Glass of fizz on arrival  
7:30pm Dinner is served  
Carriages at midnight

Deposit £5.00 per person  
Minimum 30 guests per booking

**TO BOOK EITHER THE FESTIVE BANQUET  
NIGHT OR A FESTIVE FEAST PARTY NIGHT**

PLEASE CALL  
THE SPRINGS ON: 01491 827300



The Springs Golf Club  
Wallingford Road, North Stoke, Wallingford, Oxfordshire OX10 6BE  
Email: thesprings@darwinescapes.co.uk

#### Dietary Requirements:

When placing your order please make us aware of any food allergies or intolerances you may have.





## SUNDAY CARVERY

12TH NOVEMBER  
12.00 - 3.00PM

2 COURSE

£17.95

3 COURSE

£20.95

## BRUNCH LUNCH

EVERY SATURDAY

ONLY

£8.00

SPECIAL

NEW DISHES WEEKLY

## QUIZ NIGHT

17TH NOV

ONLY

£15.00

INCLUDES A SMALL GLASS OF WINE OR BEER,  
BEEF GOULASH, COFFEE AND PETIT FOURS

## OUR CLUB HOUSE IS OPEN TO ALL DAILY...

WHY NOT  
POP IN FOR  
A COSTA  
COFFEE  
OR A BITE  
TO EAT?

## FESTIVE CELEBRATIONS

AT  
THE SPRINGS  
GOLF CLUB

Why not enjoy some Festive Fayre  
with our Festive Menu and book a  
table at The Springs Clubhouse.  
Running daily from 15th November  
– 30th December

3 COURSE

£24.95

PER PERSON

2 COURSE

£20.95

PER PERSON

PRIVATE FUNCTIONS ALSO AVAILABLE

If you are looking to host  
a private event, why not  
enquire about our Festive  
Feast Party Nights?

£21.95

PER PERSON

MINIMUM  
NUMBERS 30

Please call to enquire

Excluding 9th, 16th December,  
Christmas Day and Boxing Day

The Springs Golf Club  
Wallingford Road, North Stoke, Wallingford, Oxfordshire OX10 6BE  
Telephone: 01491 827 300  
Email: thesprings@darwinescapes.co.uk







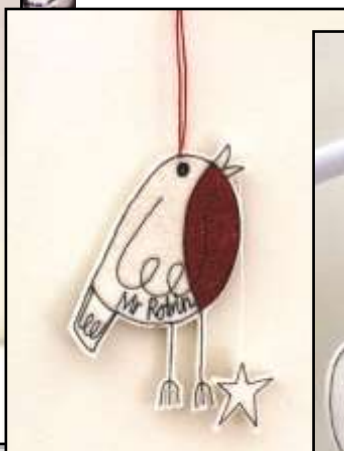
## Art Weeks Christmas Season 2017

Oxfordshire Artweeks artists and designer-makers are opening their doors and presenting pop-up exhibitions and festive craft shows to give you the chance to choose unique and unusual gifts for Christmas. Be delighted by locally-crafted jewellery, pottery, furniture, soft furnishings, paintings, limited edition prints made by hand, and cards for all your friends. Enjoy a mulled wine and a mince pie as you browse at more than seventy venues across the county.

In Dorchester, **Emma Corry** will be displaying and selling her work, some of which is shown here, on **18 and 19 November** at Carrick Cottage, 54 High Street. For a full brochure of all the artists taking part, go to:

[www.artweeks.org](http://www.artweeks.org)

The next Artweeks May Festival will take place from the 5 to 28 May 2018.



More of Emma's work can be seen at <https://folksy.com/shops/EmmaLouiseBlanch>



## Didcot Christmas Street Fair Thursday 30 November 4.00pm to 9.00pm



For all the fun of the fair, with side shows, rides, parades and food stalls, the Didcot Christmas Street Fair is an entertaining evening for all.

[www.didcotevents.co.uk/didcot\\_street\\_fair.html](http://www.didcotevents.co.uk/didcot_street_fair.html)



# PACT Carol Concert



PARENTS AND CHILDREN TOGETHER

Back by popular demand, PACT's annual carol concert is being held once again at Dorchester Abbey on **Sunday 10 December.**

Light refreshments will be served from 4.00pm-5.00pm with some fun activities for children. This will be followed by the carol concert at 5.00pm-6:30pm with performances from the Abbey Choir, Benson Military Wives Choir and professional soprano Erin Hughes, as well as lots of opportunities for the congregation to join in for classic Christmas carols.

The carol concert is free to attend but there will be a retiring collection to raise funds for PACT's award-winning therapeutic support services for adopted children.

We look forward to seeing you there and encourage you to bring friends and the whole family to join in the festivities and support PACT's vital work.

Tickets are free but must be booked in advance via PACT's website: [www.pactcharity.org/carols](http://www.pactcharity.org/carols)

**Tickets are limited so please don't delay and register for tickets today.**



Health and wellbeing for the over 60's

## Keep Fit Senior Circuits

**Dorchester Village Hall**

Wednesdays 10 am - 11 am

£4 per class



Improve bone density, balance and fitness!  
Wear Comfortable clothing

### To book contact:

Annalie Thomasson on 07766 991487  
[annalie.thomasson@southandvale.gov.uk](mailto:annalie.thomasson@southandvale.gov.uk)



## Is it about time you had a Fitness MOT?

GO Active Gold is offering free fitness check ups and activity advice to all aged 60+

Get in contact for your free Fitness MOT at one of our events.



Venue: Dorchester Village Hall  
Date: Tuesday 28 November 2017  
Time: 9.30 am - 11.30 am

### To book your free space, contact:

Annalie Thomasson 07766991487  
[annalie.thomasson@southandvale.gov.uk](mailto:annalie.thomasson@southandvale.gov.uk)





## Monthly Meeting - November

The meeting will take place in the back room of the Village Hall on **Wednesday 8 November** commencing at 7.30 p.m. The Agenda will be posted on Village notice boards and on the Parish Council section of the Village website – [www.dorchesteronthames.co.uk](http://www.dorchesteronthames.co.uk) - three clear days in advance of the meeting. All Parish Council Meetings are open to the public. A resident who wishes to raise any matter of concern is welcome to do so at the start of the meeting.

### Change to Food Waste Collections

Following the recent investment in new recycling collection vehicles, food waste is being collected by specialist teams who travel in smaller vehicles than before. This means that food waste caddy emptying does not happen at exactly the same time as the large green and grey bins are emptied. Discovering that only one of their bins has been emptied has caused some residents to believe that they have been 'missed out'. This is not the case – another vehicle will arrive soon.

### Village Notice Boards

The Parish Council notice boards are extremely popular and demand for display space is high. It would therefore be much appreciated if event organisers would produce notices which are A5 rather than A4.

### Contacting the Parish Council

The Parish Clerk is Geoffrey Russell of The Pigeons (next to The Fleur de Lys), 5-7 High Street, Dorchester on Thames OX10 7HH

Telephone (during normal office hours, please, unless an emergency) **07745 311439**. Texts are always welcome.

e-mail: [parishclerk@dorchesteronthames.co.uk](mailto:parishclerk@dorchesteronthames.co.uk)

Cllr Chris Hill, the Chairman of the Council, can be contacted via [chairman@dorchesteronthames.co.uk](mailto:chairman@dorchesteronthames.co.uk)

More information about the Village is available at [www.dorchesteronthames.co.uk](http://www.dorchesteronthames.co.uk)



## Neighbourhood Development Plan

Last month I reported that our plan is now with SODC for a six week consultation period. By the time you read this report that period will have ended and we should be into the next phase (the Examination period described in the second bullet point below). I thought it would be interesting for you to know the official and regulatory timescales by which the District Council will be guided. These have been detailed below. This process is entirely in the hands of SODC and we have no means of influencing it.

Once submitted the District Council has to Publicise the NDP for a minimum of six weeks.

- Examination by an Inspector is eight weeks (this is not regulated, it could be done quicker but it could also take longer).
- The District Council has five weeks to decide if the NDP should progress to a referendum once the examiner's report is published.
- Once the decision to progress to referendum is published the District Council has 56 working days to hold a referendum (there are exceptions to this). We have to publicise the notice of referendum for 28 working days within those 56 days.
- The District Council then has eight weeks to decide whether to adopt the plan following a positive referendum result.

For those that have not yet read it I would strongly advise that you to do so. There are online copies on the Dorchester on Thames web site but for those who would prefer to read the printed documents a copy is available in The George Hotel reception.

**Chris Hill**  
NDP Steering Group



**STEVE WILKINSON**  
PROPERTY MAINTENANCE

**Painting, Plastering, Stonework,  
Fencing, Patios, Repointing,  
Carpentry, Garden Tidying, Etc.**

*Telephone: 01865 891554  
Mobile: 07885 538514*

**BRYANS LOCK SERVICES**

Phone: 01865 340138. 01491 520820.  
01235 420742

Locks Supplied-Fitted-Serviced-Opened-Replaced for  
Timber- Aluminium- Steel, PVCu doors & windows.  
Keys cut to pattern.  
Keys to number for office furniture.  
Supply Safes, Document & Media Cabinets & Files  
Locks to Insurance Company Specifications.

Master Locksmiths Association Approved Company.  
Reg. No. 002623



## The George Hotel

DORCHESTER-ON-THAMES

*A beautiful 15th century coaching inn set in an idyllic location*

We offer a variety of modern British dishes, exotic treats and a senior citizen menu  
Join us on Sundays for traditional roasts served with our signature Yorkshire puddings

**Ala carte menu available 12-3pm and 6pm-9pm daily**

**Senior citizen menu available daily from 12pm-3pm at £5.95 per head**

*Enjoy four fine real ales in our olde worlde pub*



Christmas bookings now being taken

To reserve your table please call  
01865 340404

[www.thegeorgedorchester.co.uk](http://www.thegeorgedorchester.co.uk)



# Ringrose

Tree Services

**Tree care...we care**

Insured Qualified Experienced  
Telephone: 01865 735235  
[simon@ringrosetrees.co.uk](mailto:simon@ringrosetrees.co.uk)

"Your work has exceeded all our  
expectations and our beautiful old oak  
will now live on!"

Blagrove Lodge, Fox Lane  
Wootton, Nr Abingdon  
Oxfordshire OX13 6DE



## Bell Motors

Behind H Cafe at the Berinsfield roundabout

MOT's while you wait

**£15 discount on MOT's when you quote this advert**

On site MOT bay and Workshops.

All makes and models catered for

**Need a service give us a call.**

Electronic diagnostics:~ engine management, ABS, air bags all undertaken.

Need a SERVICE. (**10 % discount** when you quote this advert)

We supply and fit exhausts, brakes, batteries

We will carry out any MOT work required. (tyres and air con please call for quote)

**Free collection of your vehicle,  
or we will take you home and collect you upon completion.**

We will come out for breakdowns/recovery as needed.

Welding, you break it we will try and repair it, and not just your car!!

Garden machinery not starting we may be able to help?

All credit and debit cards welcome.

MOT's 01865 341039  
WORKSHOP 01865 341155  
MOBILE 07931970392





**BENSON** Choral Society

000  
0000  
000  
BENSON  
Choral Society

**RICHARD BLACKFORD**

**MIRROR of PERFECTION**

**HAYDN**

**THERESIENMESSE**

Lorena Paz Nieto : Soprano

Francesca Saracini : Mezzo Soprano

Nathan Vale : Tenor

Will Dawes : Baritone

**Dorchester Abbey**

**Saturday 25th November 2017 at 7.30pm**

**The Elgar Orchestra**

Christopher Walker - conductor

tickets : £18 + £15 (reserved) £12 unreserved  
available from [tickets.bensonchoral@gmail.com](mailto:tickets.bensonchoral@gmail.com) or 01865 407395





Jenks Oxford are based here in Dorchester and so are convenient for all your tree needs.

Ask for a free site consultation and quotation on our full range of general and specialist services from our qualified professional staff.

Tree felling & removal - Pruning - Tree surveys - Diseased or unstable trees - Stump removal - Hedge cutting... and much more, just ask, and with £10 million public liability insurance for peace of mind.



**FREEPHONE**  
**0800 458 3328**  
info@jenksgroup.co.uk www.jenksgroup.co.uk

Proud to sponsor **FOOTSTEPS**  
and DOT Under 10's football team

County Council approved. Arboricultural Association Approved.  
NPTC & Lantra Qualified. **WHICH?** Approved.



Interior and Exterior Builders and Decorators

Ashcroft, High Street, Benson, Wallingford, Oxon. OX10 6RP  
Tel: 01491 838797 • Mob: 07860 890925

Email: roypassey@btconnect.com  
www.roypasseybuilders.co.uk

## L B Plumbing



Toilets, taps, immersions,  
showers, leaks and more,  
**no job too small**

Fully insured, free estimates,  
no call out charge

**Call Lee 01491 834484 /  
07981642688**

## CP GROUNDWORKS

Colin Passey

Mini Digger/Skip Loader with Operator

**Footings, Oversites,  
Drainage, Patios,  
Driveways,  
Site Clearance, etc.**



Mob: 07853612505  
Tel: 01491 598856  
colin.passey@icloud.com

**"No job to big or too small"**



## Graceful Gardens DESIGN

Gardening Service

by RHS qualified female gardener

Garden design / Plans / Landscaping / Planting  
Demonstrations / Consultations / Pruning / beds and borders...

**Call 07814 691040**

email: sundaycarrigan@gmail.com  
www.gracefulgardens.vpweb.co.uk

Quotations by appointment References available  
Wallingford and surrounding villages covered



## Kes Furniture Restorers

Mobile: 07879 522 511  
Workshop: 01865 340173

River Mead, 12 Oxford Road,  
Dorchester on Thames, Oxford OX10 7LX

**www.kesfurniture.co.uk**

## Massage Matters



Massage is the perfect way to combat stress or muscular discomfort, whatever your age or lifestyle. Treat yourself or a loved one to a massage at our local salon.

Gift vouchers and evening and weekend treatments available.

Based at The George Hotel, Dorchester. Entrance off the High Street.



To book please call **077250 62259** or email  
massagematterstome@gmail.com – for more information visit  
www.massagematters.me.uk



## From your County Councillor... ...Lorraine Lindsey-Gale

### **Oxfordshire Growth Board backs infrastructure funding bid**

The Oxfordshire Growth Board\* has provided unanimous support for an application to the Government's Housing Infrastructure Fund (HIF) as part of a package of investment to deliver transport infrastructure. The funding bid for up to £500 million was submitted on 28 September by OCC as the county's transport authority. Money is sought to bring forward infrastructure investment to pump-prime three major development schemes:

**1. Didcot Garden Town** – £171m is bid for transport improvements including a Didcot Science Bridge and A4130 dual carriageway, a new river crossing at Culham and Clifton Hampden Bypass. This would support the delivery of over 22,000 homes in Didcot, Culham, Harwell and Berinsfield. Additionally up to £70m of cycle and other sustainable transport improvements are proposed for inclusion in the bid plan.

**2. West Oxfordshire Garden Village** – £135.4m is bid for further upgrades to the A40, building on existing schemes and based on the approved A40 Long Term Strategy including development of the Rapid Transit network and additional highway capacity on A40 transport corridor. This would support the delivery of over 10,000 homes in Witney & Carterton, and around Eynsham.

**3. North of Oxford** – £152m is bid for the development of Rapid Transit lines on upgraded A44 and A4260 corridors, a new Park & Ride, and strategic cycle infrastructure plus. Support is also sought for additional education requirements (as yet un-costed). This would support the delivery of 5,570 homes in Woodstock, Begbroke/Yarnton and the Northern Gateway.

The bids submitted to the £2.3 billion Housing Infrastructure Fund are ranked as above according to the Government's scoring method, with the guidance that the strongest bid be put first. The Oxfordshire Infrastructure Strategy, commissioned by the Growth Board, was used to identify infrastructure priorities that offered the prospect of a step-change in housing provision in a defined area. The Government will consider Oxfordshire's bids along with those from other areas and the highest ranking schemes will go through to a second stage in the Spring 2018, with final funding awards announced from Summer 2018.

The HIF funding bids complement other work being conducted by the Growth Board to secure investment in transport, schools, hospitals and other infrastructure needed to support the predicted growth in population, and meet the future needs of Oxfordshire families, their children and grandchildren in terms of jobs and homes across the county to 2040 and beyond. This includes discussions with the National Infrastructure Commission (NIC) over the proposed Oxford to Cambridge Growth Corridor. It also involves linked discussions with Government - supported by both Oxford Universities - over a Housing and Growth Package for Oxfordshire to help unlock the benefits of the county's strong and growing knowledge-intensive economy.

\*The Oxfordshire Growth Board comprises the six councils: Cherwell District Council, Oxford City Council, Oxfordshire

County Council, South Oxfordshire District Council, Vale of White Horse District Council and West Oxfordshire District Council, together with the county's Local Enterprise Partnership (OxLEP).

### **Tenth Public Health Annual Report published**

Oxfordshire's Director of Public Health has published his tenth Public Health Annual Report. It is an independent report about the state of health in Oxfordshire and the challenges facing the county and its residents. It is written in a very readable style and can be found here <http://mycouncil.oxfordshire.gov.uk/ieListDocuments.aspx?CId=148&Mid=5106>MORE

### **New era for daytime support in Oxfordshire**

A new system of delivering daytime support services in Oxfordshire came in to operation on 1 October. Eight new centres\*\* will provide support for more than 500 older people or people with a learning disability who have been assessed as having an eligible need and some other people who do not have an assessed need. The changes follow a consultation with service users and their families in late 2016 in which they were given the opportunity to have a wide-ranging input in to how the new service should take shape. Within the council's new £4.5m service there are 1,600 days of support per week (3,200 sessions) being provided across the eight locations. Each centre will have its own fleet of family-size vehicles, some of which will be adapted. These will be used to transport people to and from the centres and will be driven by staff from the Community Support Service. There will be a number of options for meals, including: staff supporting people to eat out at a local café, cooking as part of a small group, paying towards a group meal prepared by others, a simple hot meal prepared by staff, and people bringing in their own pre-prepared meal or light lunch if they wish to.

\*\*The centres are located at Audlett Drive, Abingdon; Neithrop Avenue, Banbury; Launton Road, Bicester; Britwell Road, Didcot; Agward Stone Road, Horspath Driftway, Oxford; High Street, Wallingford; Charlton Village Road, Wantage; and Moorland Road, Witney.

### **New Communities Fund**

The County Council has agreed to provide £250,000 one-off funding for a Communities Fund for communities to bid into for matched funding schemes or projects to supplement services following the recent changes and reductions, for example community transport schemes.

The fund has been allotted to individual councillors so that each has a sum of £5,000 to award. However if a proposed scheme crosses several local divisions a joint bid supported by multiple Councillors will be eligible. The closing date for bids is 31 December, and bids will be reviewed and decisions made at the next OCC Locality meeting on 19 January 2018.

Organisations can find out more details at [localities@oxfordshire.gov.uk](mailto:localities@oxfordshire.gov.uk) and can download an application form our website at [www.oxfordshire.gov.uk/cms/content/communities-fund](http://www.oxfordshire.gov.uk/cms/content/communities-fund).

In the first instance organisations need to discuss their idea with their County Councillor who will act sponsor. That's me on: [lorraine.lindsay-gale@Oxfordshire.gov.uk](mailto:lorraine.lindsay-gale@Oxfordshire.gov.uk)



T: 01865 890548

F: 01865 890198

E: [info@fourwindsgarage.com](mailto:info@fourwindsgarage.com)

## Local, Professional Vehicle Technicians

- MOT's
- Servicing
- Repairs
- Diagnostics
- Bodywork
- Welding
- Free collection and delivery
- All makes covered



### ARBOCARE LTD. TREE AND GARDEN SPECIALISTS



#### NATIONAL TRUST APPROVED ARBORIST

- Established 20 years
- Tree surgery & landscaping
- Tree survey / reports
- Grass & hedge cutting
- Fencing

Cert Arb RFS (Distinction)

**Freephone 0808 155 5815**

**Mobile 07778 811 136**

**[www.arbocare.co.uk](http://www.arbocare.co.uk)**



### St Mary's Dental Practice

Dr Ash Ratti (BDS Hons) Kings College London

[www.stmarysdental.co.uk](http://www.stmarysdental.co.uk)

21a St Mary's Street

Wallingford Oxon OX10 0EW

Tel 01491 825252

We are a family orientated Practice located in the centre of Wallingford providing care and consideration from all members of my team to help provide you with all aspects of your dental requirements.

For further information, or make an appointment, please call my Receptionist on 01491 825252



*Truly a Home from Home*

## Winterbrook Nursing Home

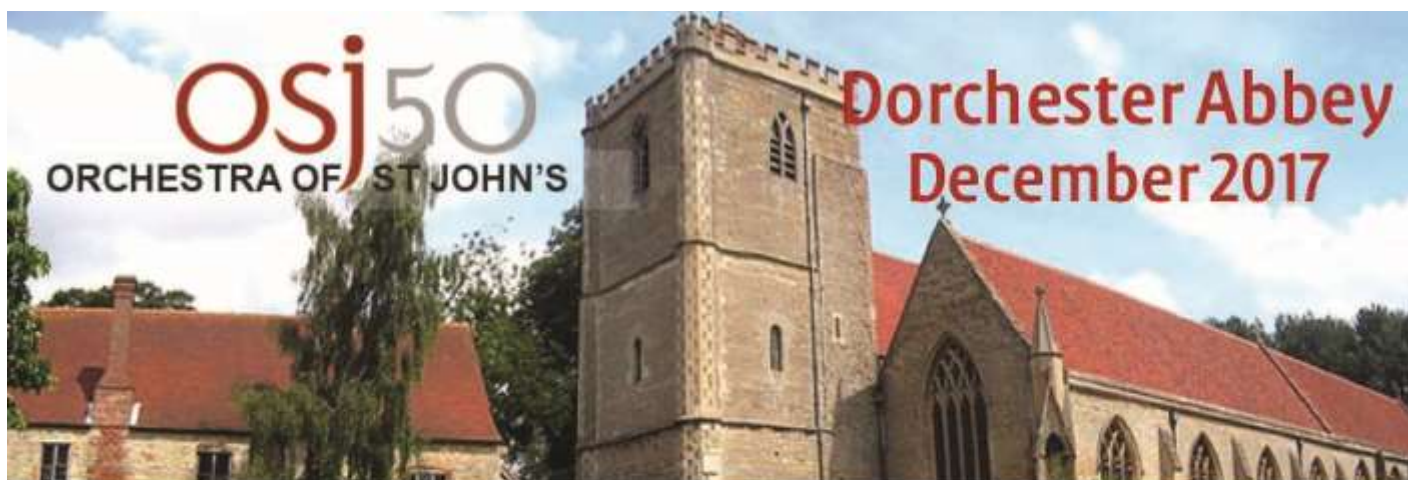
*Where Care comes first*

- Idyllic setting with picturesque gardens
- 24 hour professional nursing care
- Long & short term care • Convalescent care

**Wallingford (01491) 833922**

18 Winterbrook, Reading Road, Wallingford, Oxfordshire OX10 9EF





Saturday 9 December 7.30pm

## Handel's Messiah

Eline Vandenneede soprano

Tai Oney countertenor

John Findon tenor

Christian Valle baritone

Wednesday 13 December 7.30pm

The Ex Swingle Singers

Shillingford & Warborough choir

## 'Christmas carols plus'



Sunday 31 December 7.00pm

## Strauss Gala

Waltzes and Polkas and  
Songs

with brilliant young tenor

Christopher Turner

Tickets [osj.org.uk](http://osj.org.uk) 07775 904626

## Oxford to Cambridge Expressway update

At a meeting with the Expressway Action Group (EAG) on Tuesday 10 October it was revealed that some headway had been made to find out what has been happening so far in planning a new 'Growth Corridor' to link Oxford and Cambridge and, more important from our point of view, one of three published possible routes referred to as the 'Southern route'. The map was shown on Page 14 of the October issue of the Dorchester News. This was the second public meeting for some of the parishes close to Cuddesdon and Denton but the first for Dorchester as we only discovered the extent of the plan in the middle of September from our county councillor. More information is being sought from some of the reluctant organisations involved but they are remaining somewhat tight lipped.

The EAG are treating this possible route very seriously and are mounting a campaign to fight it as robustly as possible now, as by the time a consultation takes place they fear that a decision in principle will already have been made. Time is short and some decisions may be made before the Chancellors Autumn Statement.

### How could it affect Dorchester?

The southern route would intercept the A34 near Blewbury, pass South Moreton, Brightwell cum Sotwell, cross the hillside somewhere near Wittenham Clumps, cross the River Thames somewhere between Dorchester and Warborough, heading north using the Thame valley near Stadhampton, Denton, Cuddesdon Little Milton crossing the M40 and on towards Thame. This road is likely to be two or possibly three lanes with the occasional junction and the scale of the only map we have is such that the accuracy of the route is limited to about a mile. Perhaps of greater concern is the fact that the whole route which is 100 miles long is expected to deliver a possible 1m new houses. Given that the part of the route closest to us is about 10 miles long this could mean another 100,000 houses in South Oxfordshire.

Therefore, we are urging every resident to start lobbying now before any decisions are made that would be difficult to address later. The key points are listed below but we recommend you read the more detailed explanations and recommended recipients to lobby on the web site.



1. Any proposed Southern Route will cut through the heart of Oxford's Green belt, in contradiction of national and local planning policies

2. The Southern Route will cost over £400 million more than the Northern/A34 option (NIC and Highways England's own figures)

3. A Southern route would separate the Ox-Cam Expressway from the East-West Rail Link, preventing transfer from road to rail, and would deny easy access to Oxford Parkway, Bicester & other stations, generate MORE road traffic and city congestion and pressure on 'park & ride' services.

4. A Southern Route will leave the A34 through West Oxford unimproved and miss the opportunity for regeneration in that area

5. A Southern route will cut through a pristine Flood Plain environment and wildlife corridor: it would cause huge environmental damage

6. A Southern Route to M40 Junction 6,7 or 8 will prevent designated Growth Towns of Bicester, Witney, Banbury, Northampton etc. receiving the growth boost and advantages of the new Expressway. Any Southern Route would run on the 'wrong' side of Oxford for linking them to the Expressway.

7. A Southern route would deliver much-needed housing growth later than a Northern option, which would link existing growth towns which already have town centres, infrastructure, schools, surgeries, employment zones etc.

8. The Northern option via A34 and Bicester is closely aligned with the new Oxford - Cambridge Rail link: access from Expressway to Rail stations would allow faster 'last-mile' access to Oxford / Didcot and other Knowledge Spine Towns, and reduce road traffic pressure and congestion on Oxford City.

9. The Northern route along A34 would see junction improvements and improved flows all along the A34 to M40 at Junction 9, and especially at J9 itself, and would eliminate the daily traffic jams on the M40 there.

### The Parish Council

## Speedwatch

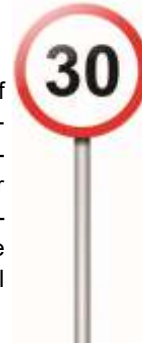


At the Meeting held on 12 July 2017, the Parish Council decided to determine if there is enough interest from councillors and residents for Dorchester to start running its own Speedwatch surveys. Having received e-mails and notes from several residents, on 11 October 2017 the Parish Council debated whether there is sufficient support. A friendly but robust debate between Council Members and three residents ensued. This was concluded with a Council vote in favour of commencing a Speedwatch trial programme. The programme will be for six months initially and will focus on Henley Road and High Street.

The Police have provided copies of the following documents which can be provided to you if you are considering becoming a

volunteer: Community Speedwatch Briefing - half day training syllabus, Speedwatch Briefing Notes - the instructions, Speedwatch Protocols - e.g. Minimum trigger speed no lower than 35mph in a 30 or 40 mph limit, Speedwatch Risk Assessment, Speedwatch Roadside Document, Thames Valley Police Indemnity Agreement. Note that the Parish Council signs the indemnity, not the volunteers.

Seven Volunteers have already put their names forward but **please make contact** with the Parish Clerk by **6 November** if you wish to Volunteer, preferably by email to [parishclerk@dorchesteronthames.co.uk](mailto:parishclerk@dorchesteronthames.co.uk) so that the documents can be sent to electronically.







**BERINSFIELD LIBRARY**  
 Visit your Local Library  
 and see what we have on offer  
**Christmas craft Afternoon**  
**Wednesday December 20<sup>th</sup> 3.45pm**

Rhymes for the Under 5's Wednesdays 10.30am

Storytime Wednesdays 3.45pm

Computer Lessons Thursdays 2.00pm

Knit and Natter  
 Tuesday 7<sup>th</sup> November & 5<sup>th</sup> December 2.30pm

Reading Group  
 Thursday 9<sup>th</sup> November & 14<sup>th</sup> December 2.00pm

Coffee Morning  
 Tuesday 15<sup>th</sup> November & 19<sup>th</sup> December 10.30am  
**All Welcome**

 Here to help

 [www.oxfordshire.gov.uk](http://www.oxfordshire.gov.uk)

**join in • explore • discover • log on**

## Don't miss out Working parents of 3 and 4 year olds

Working parents of 3 and 4 year old children may be entitled to 30 hours free childcare per week. This includes those who are self-employed and some parents on zero hours contracts.

To find out if you are eligible visit  
**[www.childcarechoices.gov.uk/](http://www.childcarechoices.gov.uk/)**.

To join those already benefiting apply by the beginning of December for a January start.

The Family Information Service has information about childcare providers in your area. Visit **[fisd.oxfordshire.gov.uk](http://fisd.oxfordshire.gov.uk)**  
 Children, Education and Families Directorate  
 Oxfordshire County Council



## Volunteers needed to teach digital skills

Your county council has launched a new campaign appealing for digital helper volunteers to teach basic digital skills to people in their community.

**What are digital helpers?** Digital helpers teach basic digital skills to people with little or no experience of using computers or the internet. They volunteer in libraries, providing one-to-one support and encouragement to boost confidence and help people to help themselves.

Digital helpers teach skills such as how to set up an email account, search for jobs, complete online forms, navigate the internet and find useful websites, and use e-learning courses.

**Why volunteer?** Teaching digital skills has lots of benefits. It enables others to access employment and training, use online services, become more independent and less isolated.

But starting to do anything online when you don't know how can be daunting. That's where digital helpers come in!



**Could you volunteer?** If you are patient, have good communication skills, enjoy working with learners of all ages and can spare a few hours a week, we want you! Schedules can work around you so that you can fit it around your busy life.

Visit **[www.oxfordshire.gov.uk/digitalhelper](http://www.oxfordshire.gov.uk/digitalhelper)** or contact your local library to find out about volunteering as a digital helper.



**HOWARD CHADWICK  
FUNERAL SERVICE**

*A caring family owned and managed Funeral Service*

- Dedicated Private Chapel of Rest •
- Golden Charter Pre-Paid Funeral Plans •
- Specialists in Memorial Stones and Designs •

**Benson Lane, Crowmarsh Gifford  
Wallingford OX10 8ED**  
**Tel: 01491 825222**  
**[www.chadwickfuneralservice.co.uk](http://www.chadwickfuneralservice.co.uk)**



**VERITY HICKMAN  
PRIVATE CARE**

**.....offering excellence in all manner of home care including personal care, medication management, dementia care, mobility problems, equipment and shopping. Live-in care can be arranged. Ring me, I can help.**

**Please phone 01865 891 481 or 07879 46 80 41**



## From your MP... ...John Howell

This month I write having just returned from a week deliberating at the Parliamentary Assembly of the Council of Europe in Strasbourg. The Council of Europe was set up in 1949 and currently includes 47 member states, 28 of which are in the EU. It looks after the rule of law, human rights and democracy in Europe. The Parliamentary Assembly consists of 324 members of parliament from the member states. It provides a democratic forum for debate, monitors elections and its committees play an important role in examining current issues. You may wonder why an MP elected in the UK should go to speak at such an organisation. One of the responsibilities of Parliament is foreign affairs. Being active members of the assembly is part of our international obligations and it is important that we have a voice in this international forum. If we had paid more attention to this we might, for example, have avoided the replacement of Colonel Gadaffi by a hard-line regime rather than the friendly liberal democracy we all hoped for.

The Parliamentary Assembly meets four times a year. In this session I spoke on a number of subjects directly relevant to us. The first of these was the attitude of the OECD to changing the rules on foreign aid to include the Caribbean islands so badly hit by the hurricanes. I won OECD support for this. I also took up the cudgels in the fight against Daesh, whose terrorist attacks we have suffered, to ensure a proper trial for their crimes against humanity. I participated in a debate on our support for Jordan which lies at the crossroads of Europe and the Middle East and questioned the President of Ukraine on whether there had been any inadvertent help from Ukraine to North Korea's missile programme. All of this contributes to our role in the world as a strong country with a clear vision.

Closer to home, there have been many questions over the number of new homes projected to be required in our area in the forthcoming plan period. The Government has started a consultation on the methodology for the assessment of housing need. It follows from the work of an independent committee set up by Government on which I sat. Amongst other things, we argued for a Central Government methodology for Strategic Housing Market Assessments (SHMAs). The result of the proposed new methodology means that this district sees a reduction of over 200 houses per annum which in turn would see the all-important five year housing land supply restored in the district. If this goes through it will be for the district council to decide how it uses this new freedom. One thing it also makes clear is that no Council will simply have to take the unmet need of neighbouring authorities.

If you would like to know more about my work please do look at my website [www.johnhowellmp.com](http://www.johnhowellmp.com) You can also sign up for my electronic newsletter by emailing me at: [john.howell@oxfordshireconservatives.com](mailto:john.howell@oxfordshireconservatives.com)



## South Oxfordshire District Council is coming home to Crowmarsh

South Oxfordshire District Council has announced it intends to move to a new building on its former site at Crowmarsh Gifford.

The council has been in temporary accommodation along with the Vale of White Horse District Council, since the fire that destroyed the offices the two councils shared in an arson attack in January 2015. They moved into a vacant building on Milton Park six months after the fire, where they have been ever since.

During that time the councils have investigated a wide range of options for their permanent home, and have now concluded that the most cost-effective solution is to move back to the site that is owned by South Oxfordshire District Council.

The councils will now work to prepare the site to build a new, smaller headquarters, which is more suited to their needs. The building will include a new council chamber for South Oxfordshire's committee meetings, while the Vale's committees will continue to take place in The Beacon in Wantage.

Cllr John Cotton, leader of South Oxfordshire District Council, said: 'Crowmarsh has been the home of our council more or less since its inception, and it's great news to be going back home. It's the right choice for the council, it's the right choice for our residents. We'll lead the way for councils up and down the country by building an excellent and efficient headquarters that we can be proud of.'

Cllr Matthew Barber, leader of the Vale of White Horse District Council, said: 'We have explored a range of options available for our permanent home, and there's no doubt now that Crowmarsh represents the best value for our residents, as it was before the fire.'

**VICTORIA DYDE**  
— Bespoke Curtains —

**Curtains & Soft Furnishings**  
Fabric samples and Track fitting service available

Challis Farm High Street, Long Wittenham, Abingdon, Oxon OX14 4QH  
T: 01865 407197 E: [mcknight1967@gmail.com](mailto:mcknight1967@gmail.com)

## Fishmonger

The travelling fishmonger comes to Dorchester every Tuesday and will stop between 9.30am and 9.50am (9.40am in winter months when weather bad, but 9.30am in summer months) in High Street near War Memorial.





## Your very last chance to see.....

There is a last chance to see this year's special exhibition 'Wallingford Castle - the Inside Story' at Wallingford Museum, as the Museum closes for the winter on the 30th November, to prepare for new major presentations in 2018.

'Wallingford Castle - the Inside Story' presents a closer look at different parts of the Castle as revealed in the new documentary research.

Alongside are two more exhibitions of local interest:-

- 'Pettits: past to present' exhibition gives a history of Wallingford's department store, and the family who have run it from its beginning in 1856 to the present day.

- 'Ways to Wallingford' describes how Wallingford has been an important crossing point on the Thames since the Saxon times.

There is also the 'Midsomer Murders' display and the growing 'At home with the Queen of Crime: Agatha Christie' where information has been presented that has been learned from several people in the town who came into contact with the famous crime writer.

The Museum is open until 30 November on Tuesdays to Fridays 2.00pm - 5.00pm, and Saturdays 10.30am - 5.00pm.

[www.wallingfordmuseum.org.uk](http://www.wallingfordmuseum.org.uk)



## 'Treasures with Tales'

Plans for next year's Wallingford Museum's exhibition 'Treasures with Tales' are just going 'live'!

Most of us keep treasured items - not because they are 'valuable' but because they have a special significance. So Wallingford Museum would like to ask you to share some of your 'Treasures with Tales' to create a very special exhibition for 2018. They are asking people to offer the loan of an object of any kind that they own that has a special significance, with a tale worth sharing. Objects can include anything, and certainly don't need to be intrinsically valuable! It might be a very simple thing - an ornament, souvenir, letter, picture, find, or a family heirloom - just so long as it has an interesting story behind it!

The Museum volunteers will select some for the exhibition, but will also display a file of details of everything which is sent in. They're hoping for a great response!

Please email your details to: [admin@wallingfordmuseum.co.uk](mailto:admin@wallingfordmuseum.co.uk) or post your photo and tale to 'Treasures', Judy Dewey, Wallingford Museum, 52 High Street, Wallingford OX10 0DB.

## Wallingford U3A

Our October speaker, George Verdon, treated us to a fascinating account of the production of whisky at one of Scotland's iconic distilleries, Springbank, in Campbelltown, in the West Highlands

On **November 1**, Alistair Lack will give us 'An Anecdotal History of Oxford University'.

Our Meetings are held at 2.00 pm on the first Wednesday of each month at Crowmarsh Village Hall. Visitors are always made welcome to the talk, tea and conversation afterwards. For more information on what we do check our website: Google: U3A Wallingford; or phone Jill on **01491 835994**

## What's on in Wallingford



## 'Blewbury - A Saxon surprise in a test pit and a Roman religious site on the Downs'

**Wednesday 8 November**

November's monthly talk at The Wallingford Historical & Archaeological Society (TWHAS) will describe: **'Blewbury - A Saxon surprise in a test pit and a Roman religious site on the Downs'**.

The talk will be given by local archaeologists, SOAG Chairman Dr David Carless and Lindsey Bedford, both project leaders of the Blewbury Big Dig. This is a joint venture by Blewbury Local History Group and SOAG to conduct a programme of test pits in the ancient village of Blewbury in search of the past that is missing in historical sources. The project led in 2015/16 led to the discovery of an early Saxon sunken featured building in someone's back garden, and another venture investigated crop marks on the Berkshire Downs, which English Heritage recorded as a possible Romano-British temple. The sunken featured building was cut into chalk, being well preserved and yielded some lovely finds and the possible Roman site delivered its own surprise in the form of a deep shaft. Both David and Lindsey also work on the TWHAS Urban Test Pit programme in Wallingford, so they will have lots of insights to share with us.

This talk will be held on Wednesday 8th Nov, 7.45 for 8pm, at St Mary's Church, Wallingford. Visitors (£4) are most welcome.

[www.twhas.org.uk](http://www.twhas.org.uk)



## Wallingford Gardening Club Autumn - looking forward to Spring!

**Thursday 9 November**

At the November meeting of the Wallingford Gardening Club, Paul Patton will present an illustrated talk 'Autumn - looking forward to Spring'.

Paul is a professional horticultural consultant, plant pathologist, writer and broadcaster. He will give tips on how to prepare a garden for next spring.

The talk will be held at Ridgeway Community Church, Wallingford at 7.30pm on **Thursday 9 November**.

Visitors very welcome £3.

Isabelle Darby

*Advance notice of future events :-*

*Thurs 14 December - AGM and quiz, followed by mince pies and wine*

**Isabelle Darby**  
**01491 836867**



## November

Work on refurbishing Wallingford's Corn Exchange progresses and in the final weeks until completion, filmgoers can still get their regular 'fix' of movies at The Great Hall in Cholsey Meadows (the location is on the site of the former Fairmile Hospital, off the Reading Road). The upcoming programme at CornExchange@TheGreatHall includes:

**Friday, 10 November: Despicable Me 3 (PG)**  
at 5.00pm. Adults £5, children £2.50.

**Friday, 10 November: Whisky Galore! (2017 version, 12A)**  
7.30pm. All tickets £5.

**Friday 24 November: The Graduate (12A)** at 7.30pm. Tickets £5

Friday 15 December: Stephen Sondheim's **Follies**, NT Live from the National Theatre. 7.00pm start. Please note there is no interval and the evening's programme will last around 2½ hours. Tickets £10.

Tickets for all performances can be booked online at [www.cornexchange.org.uk](http://www.cornexchange.org.uk) or bought for CASH on the door at The Great Hall. More information about upcoming films plus directions/map to The Great Hall are available on the web-site.

Major work at the Corn Exchange includes installing a new roof and undertaking vital improvements to the theatre's infrastructure. Once this is complete, the theatre will re-open with its usual exciting mix of films, theatre and comedy.

### STOP PRESS: Dates for the Diary

Sinodun Players' annual panto **Cinderella** will be performed at the Corn Exchange from **12 to 27 January 2018**. Watch this space for more details.

[www.cornexchange.org.uk](http://www.cornexchange.org.uk)

## Dorchester News online

Remember that Dorchester News is available to download from the Abbey website each month (go to the homepage at: [www.dorchester-abbey.org.uk](http://www.dorchester-abbey.org.uk) and click on Dorchester News) and from the village website (go to [www.dorchester-on-thames.co.uk](http://www.dorchester-on-thames.co.uk) and click on the Dorchester News tab).

Remind your friends and family who have moved away from the village that they can catch up with what's going on in Dorchester.

## Chiropodist

Third Wednesday of each month,  
1.00–4.00pm  
Village Hall (back room)  
**16 November**  
For an appointment, Jo Bennett,  
**07903 133469**  
Cost £15

## Langtree Sinfonia Autumn Concert 2017 11 November

The Autumn concert of the Langtree Sinfonia will be held in St Mary's Church, Wallingford on Saturday, 11 November at 7.30pm.

The evening starts with the 'A Midsummer Night's Dream' overture by Mendelssohn. Written when the composer was just 17 and a half years old it has been described as 'the greatest marvel of early maturity that the world has ever seen in music'. So, a good piece to start with, then.

This is followed by the concerto, which this time is *Beethoven's Third Piano Concerto*. Beethoven wrote this concerto in about 1800 and it he first performed three years later. It owes something to a Mozart concerto, but shows Beethoven giving greater weight to his ideas.

The soloist tonight is Diana Mathews who has often played with the Isis Orchestra in Oxford. Diana has a keen interest in contemporary music, and has had a number of new works dedicated to her. She has also played with the London Symphony Orchestra and the Orchestra of Royal Opera House

Rounding off the evening will be *Haydn's Symphony No 101, in D major*. Full of ebullient good humour and rhythmic subtlety, this piece is guaranteed to send the audience home in a good mood.

The orchestra began as a music class in adult education in 1971 and went on to establish itself as an independent orchestra to further its development. When the orchestra celebrated its 40<sup>th</sup> anniversary the orchestra combined with local choirs to perform *Beethoven's Choral Fantasy*, a work which combined vocal and instrumental soloists with the orchestra. Other works played have included *Brahm's Academic Festival Overture* and *Dvorak's 6<sup>th</sup> Symphony*.

Paul Cox conducts.

Tickets	Available at the door or from <b>01189 415498</b>
Adults	£10.00
Students	£5.00
Under 16s	free

# JEMINI

LET US DELIVER YOUR MESSAGE BY

HELIUM BALLOON

LUXURY CHOCOLATE DELIVERY

SOFT TOY DELIVERY

CHAMPAGNE & WINE DELIVERY

FLOWER DELIVERY

RING OUR CREDIT CARD HOTLINE

**OXFORD 01865 242726**

39-40 THE COVERED MARKET OXFORD



**Berinsfield**  
Community Business

GARDEN, GROUNDS & PROPERTY MAINTENANCE



**T 01865 343715** E [info@bcomb.co.uk](mailto:info@bcomb.co.uk)  
W [www.bcomb.co.uk](http://www.bcomb.co.uk)

QUALITY, SERVICE & VALUE

**The Acupuncture Barn**

**Acupuncture for Families**  
Appointments now available for:  
Acupuncture, Facial Acupuncture, Moxa and  
Cupping treatments  
Chinese Medicine 5-Elements approach to treating you as a whole  
Body, Mind & Spirit  
Licenced Treatment Room:  
High Street, Chalgrove, OX44 7ST

**07879 403800**  
[acupuncturebarn.co.uk](http://acupuncturebarn.co.uk)

Flexible times by appointment



**REVIVAL**  
BENSON

PAINTED FURNITURE • WALLPAPERS & FABRICS • ANNIE SLOAN PAINT •  
LADIES CLOTHING BOUTIQUE • SUSIE WATSON POTTERY • CUSHIONS •  
JEWELLERY • MIRRORS • CARDS & GIFT WRAP • CANDLES •  
PAINTING WORKSHOPS • INTERIOR DESIGN SERVICE

33B High Street, Benson, Wallingford, Oxfordshire OX10 6RP  
01491 832080 | [revivalshop@hotmail.co.uk](mailto:revivalshop@hotmail.co.uk) | [f/revivalbensonvillage](https://www.facebook.com/revivalbensonvillage)

**Logs for Sale**

**Martin Drew**

**01865 343378 or 07774 170727**



**DORCHESTER FIREPLACES**  
INTERIORS

*Visit our unique showroom, opposite the beautiful  
Dorchester Abbey in one of Oxfordshire's most  
picturesque villages, Dorchester on Thames.*

- We offer a complete in house service from design to installation
- Our team of professional fitters are all fully qualified and HETAS registered
- Complimentary home or site visit
- Showroom open 10am to 4pm Tuesday – Saturday

Tel: **01865 341452** or E-mail  
[enquiries@dorchesterfireplaces.co.uk](mailto:enquiries@dorchesterfireplaces.co.uk)



**CLEARVIEW**  
STOVES

**HETAS** REGISTERED

WOODBURNING STOVES FOR THE 21<sup>ST</sup> CENTURY

**Larkmead**  
VETS

*Outstanding Care for Pets, Farm Animals &  
Horses throughout South Oxfordshire*

- Open 7 days a week
- Ample parking and spacious reception rooms
- Extensive modern hospitalisation facilities, including orthopaedic surgery
- Sunday surgeries at Larkmead Didcot
- Regular Cat only Clinics at our Sutton Courtenay and Benson practices
- Personal emergency cover by Larkmead Vets, 24 hours a day, 365 days a year

**CHOLSEY & BENSON** 01491 651379  
**DIDCOT & SUTTON COURTENAY** 01235 814991  
**HORSES & FARM ANIMALS** 01491 651479

[www.larkmead.co.uk](http://www.larkmead.co.uk)



## Day by day

Sat 4 Nov	<b>Realms of Glory</b> Workshop Angelic Angels 1.30pm
Sun 5 Nov	<b>All Saints</b> 8.00am Holy Communion (1662) (Canon Sue Booyes)  10.30am Memorial Service  <b>Village Firework Display</b> From 5.30pm Recreation Ground
Wed 8 Nov	<b>Parish Council</b> Monthly meeting 7.30pm Village Hall
Thurs 9 Nov	<b>Save the Fleur de Lys</b> Public meeting 7.30pm Village Hall
Sat 11 Nov	<b>Realms of Glory</b> Workshop Stained Glass Angels 1.30pm
Sun 12 Nov	<b>Remembrance</b> 8.00 am Holy Communion (1662) (Canon Sue Booyes)  10.00am Remembrance  <b>Christmas at the Museum</b> 2.00-5.00pm Abbey Museum
Tues 14 Nov	10.15am Short Communion
Wed 15 Nov	<b>Culham Horticultural Society</b> Julian Sutton <i>'Beneath the trees: non woody plants for the woodland garden'</i> 7.30pm Abbey Guest House
Thurs 16 Nov	<b>Classic Car Show,</b> 1.00-4.00pm George Hotel  <b>Chiropodist</b> Village Hall (see p36)
Fri 17 Nov	<b>Royal British Legion</b> AGM 7.00pm The White Hart
Sat 18 Nov	<b>Realms of Glory</b> Workshop Angelic trumpets 1.30pm
Sun 19 Nov	<b>2 before Advent</b> 8.00 am Holy Communion (1662) (Rev'd Jennifer Morton)  10.30am Family Service  5.00pm Beauforest Evensong



Mon 20 Nov	<b>Service at The Close</b> 2.30pm
Wed 22 Nov	<b>Dorchester Historical Society</b> Ben Ford <i>'Westgate Oxford: Initial results from Oxfords largest excavation - a pre-historic floodplain, a medieval Friary, Civil War defences and Victorian terraces'</i> 7.30pm Abbey Guest House  <b>DADS</b> <i>According to Rumour</i> 7.45pm Village Hall
Thurs 23 Nov	<b>Service at the Cheshire Home</b> 11.30am  <b>DADS</b> <i>According to Rumour</i> 7.45pm Village Hall
Fri 24 Nov	<b>St Birinus School PTA</b> Family Bingo Night Dorchester School Hall Doors open 6.00pm  <b>DADS</b> <i>According to Rumour</i> 7.45pm Village Hall
Sat 25 Nov	<b>Realms of Glory</b> Workshop Wings and Haloes 1.30pm  <b>Concert</b> <b>Benson Choral Society</b> 7.30pm Dorchester Abbey  <b>DADS</b> <i>According to Rumour</i> 7.45pm Village Hall
Sun 26 Nov	<b>Christ the King</b> 8.00am Holy Communion (1662) (Canon Sue Booyes)  10.30am Sung Eucharist
Wed 29 Nov	<b>Realms of Glory</b> Concert 6.30pm Dorchester Abbey

## Weekly events

Tuesday	<b>Coffee in the Abbey</b> 10.30am-12noon <b>Bellringing Practice</b> 7.30pm Abbey <b>Fishmonger</b> 9.30am to 9.50am by War Memorial (p.34)
Wednesday	<b>Holy Communion at Berinsfield Church</b> 9.30am <b>Song School</b> Dorchester Abbey 5.00pm
Thursday	<b>Baby &amp; Toddler Group</b> 9.30am – 11.00am Village Hall: (term time only)
Friday	<b>Choir Practice</b> 7.00pm Abbey

Regular events also appear in the Parish Council's website:  
[www.dorchesteronthames.co.uk](http://www.dorchesteronthames.co.uk)

## Parish Registers

### Baptisms

10 Sept Alma Viviane Quirke-Tomlins

### Holy Matrimony

9 Sept Hugh Preston and Victoria Madeley  
23 Sept Tesfaye Asfaw and Georgina Phipps  
30 Sept Mark Osborn and Charlotte Lucas

### Funerals

20 Sept Janet Glover  
25 Sept Shirlee Hazell  
26 Sept Felicity Jarman

Church services in the Abbey appear in red.  
More details can be found at :

[www.dorchester-abbey.org.uk](http://www.dorchester-abbey.org.uk)

For details of services at St Birinus RC Church go to: [www.stbirinus.co.uk](http://www.stbirinus.co.uk)



26 November: Stir-up Sunday



## CONTACTING THE POLICE

To report a non-emergency crime, or to give information to Thames Valley Police, call **101**. Alternatively, call Crimestoppers anonymously on **0800 555111**. In the event of an emergency dial **999**.

## HEALTH SERVICES

### DIRECT LINE TO URGENT LOCAL HEALTH SERVICES

Dial **111** to access urgent local NHS health care services. Where possible, they will book you an appointment or transfer you to the people you need to speak to or send an ambulance if they think you need one. For non-urgent health needs you should contact your GP in the usual way.

### MINOR INJURIES

The Minor Injuries Unit at Abingdon Hospital, Marcham Road, daily from 10.00 am to 10.30 pm: **01865 903476**.

### A&E

The nearest A&E units are at the John Radcliffe Hospital in Oxford (**01865 741166**) and the Royal Berkshire in Reading (**01183 225111**).

### SURGERIES

Berinsfield Health Centre: **01865 340558**  
Clifton Hampden: **01865 407888**  
Millstream Benson: **01491 838286**

## ROOM HIRE

### ABBEY GUEST HOUSE BOOKINGS

To hire the Abbey Guest House for private functions, meetings, exhibitions, etc, contact Kate Herbert on **01865 343164**.

### HIRE OF DORCHESTER VILLAGE HALL

To hire our Village Hall, contact Tracey Francis; **bookings@dorchesteronthamesvillagehall.org.uk** or telephone **01865 340352**.

Please telephone at least 24 hours in advance to arrange collection of the key.

## FAULTS AND COMPLAINTS

### STREET LIGHTING

Report any problems with a street light to **0800 317802**, available 24 hours a day. Callers will be asked for the address of the site and the nature of the fault.

### HIGHWAYS AND FOOTPATHS

Ring Oxfordshire Highways on **0845 3101111**, available five days a week, with a 24-hour answering facility. Complaints can also be sent via e-mail to **southernarea@oxfordshire.gov.uk**.

### BLOCKED DRAINS

Ring Thames Water for blocked drains on **0800 316 9800**. Callers will be asked for the postcode of the address where the drains are blocked.

### REFUSE COLLECTION

If your rubbish is not collected on the due date contact the contractor direct. Call **03000 610610** and the website: **www.more recycling.co.uk**

## BERINSFIELD LIBRARY

Green Furlong, Berinsfield **01865 340771**  
Free Internet access. DVDs can be ordered.

### OPENING HOURS

Mon - closed  
Tues, Wed, Fri 10.00am - 12.30pm  
Tues 2.00-7.00pm  
Weds, Thurs 2.00-5.30pm  
Fri 2.00-5.00pm  
Sat 10.00am - 12.30pm

## Useful Information

### ANIMAL WELFARE

RSPCA (wildlife): **0300 123 0206**  
St Tiggywinkles animal rescue: **01844 292292**  
Swan Lifeline: **01753 859397**

### TRANSPORT

#### DORCHESTER FLYER

The Dorchester Flyer runs every Friday from Dorchester to Wallingford at 10.15am and 12.00noon, returning at 11.40am and 1.00pm. Tickets must be bought from Lily's in advance.

### OTHER BUS SERVICES

Information about bus services, both local and national, is available from **www.traveline.info**, and **0871 200 2233**, which also provides information about trains, London Underground and Overground and ferries throughout the UK.

### OXFORDSHIRE TRAVEL ADVICE LINE

Free journey planning and advice for people over 65 and those needing a high level of support whilst travelling. **01865 323738**

### AGE UK

The UK's largest charity working with older people For help and advice etc. go to **www.ageuk.org.uk**

## WALLINGFORD VOLUNTEER CENTRE

WVC Volunteers provide help for the elderly, disabled or vulnerable, especially by giving lifts to medical appointments at hospitals in Oxford, Abingdon and Reading. You need to register as a client. Contact the Centre for more information. **01491 836345**

**www.wallingford.volunteercentre@gmail.com**

## CONTACTING THE PARISH COUNCIL

The Parish Clerk is Geoffrey Russell of The Pigeons (next to The Fleur de Lys), High Street, Dorchester on Thames OX10 7HH; **07745 311439** (during normal office hours, please, unless an emergency); **parishclerk@dorchesteronthames.co.uk**.

## USEFUL CONTACTS

### ANGLICAN PRIEST

Dorchester Rectory  
**Rev. Canon Sue Booy**  
**01865 340007**

### EDUCATION OFFICER

**Margaret Craig**  
**01865 343164**  
**education@dorchester-abbey.org.uk**

### ABBEY E-MAIL:

**admin@dorchester-abbey.org.uk**  
Contact details for Church Wardens and other Abbey information are on the notice board in the Abbey.

### ABBEY WEBSITE

**www.dorchester-abbey.org.uk**

### VILLAGE WEBSITE

**www.dorchesteronthames.co.uk**

### ROMAN CATHOLIC PRIEST

The Presbytery  
**Fr. John Osman**  
Bridge End  
**01865 340417**  
**www.stbirinus.co.uk**

Dorchester Abbey Museum E-mail  
**museum@dorchester-abbey.org.uk**



## REFUSE COLLECTIONS

Fri 3 Nov **Black**  
Fri 10 Nov **Green**  
Fri 17 Nov **Black**  
Fri 24 Nov **Green**

**Weekdays from 7.00am.**  
**Saturdays from 6.00am.**

Weekly: food waste (in bio-degradable starch-based bag or wrapped in newspaper, in green caddy).

The recycling centre at Oakley Wood (off the A4130) is open 8.00am - 5.00pm seven days a week.

## Index of advertisers Page

Acupuncture Barn	37
AKT Planning	16
Altom Tree Care	11
Anderson Orr	8
Arbocare	30
Beauty Essentials	12
Bell Motors	26
Berinsfield Community	
Business	37
Brannfords	11
Bryan's Locks	25
CP Groundworks	28
Dorchester Fireplaces	37
Dorchester Window	
Cleaning	11
Four Winds	30
Full Circle	12
George Hotel	26
Graceful Gardens	28
Howard Chadwick	
Funerals	33
In House	8
JEM chimney sweep	16
Jemini	36
Jenks	28
Kes Furniture	28
Larkmead Vets	37
LB Plumbing	28
Martin Drew Logs	37
Massage Matters	28
Millstream Pilates	11
Remloc Plumbers	3
Revival	37
Ringrose	26
Roy Passey Builders	28
St Mary's Dental	30
Steve Wilkinson	25
T W Hayden	15
The Springs Golf Club	19-22
Verity Hickman	33
Victoria Dyde	34
White Hart	8
Winterbrook Nursing Home	30



# According To Rumour

A comedy by Robert Scott

One night to forget ...

50,000 reasons to remember



22-25th November 7:45pm | Doors: 7:30pm

Dorchester Village Hall

Wednesday £8 Thursday - Saturday £10

Tickets available from:

Dorchester Co-op | [dads.org.uk](http://dads.org.uk)

[tickets@dads.org.uk](mailto:tickets@dads.org.uk) | 01865 340792

## DADS

Dorchester Amateur Dramatics Society