

Dorchester News

Free to every home in the parish

April 2016



**Behind the scenes at the
Abbey Museum
English Music Festival
Helping refugees**



In this issue

Annual Parish Meeting	22
Burcot Wharf	26
Chiropodist	11
Culham Horticultural	7
DADS	36
Dorchester Diary	34
Dorchester Backwater	27
Dorchester Museum	18
Dorchester News 1984	27
DoT Historical Society	7
E Oxford Community Choir	13
Earth Trust	11
English Music Festival	17
Footsteps Foundation	28
Gardens Open Day	7
Hempcroft Allotment News	7
Hurst Water Meadow	11
John Cotton	23
John Masfield Swimathon	10
Letter to the editor	15
London Chorus	3
Lorraine Lindsay-Gale	22
May Morning	3
Migrant Crisis	10
Music at St Peter's	29
Neighb'h'd Development Plan	29
Oxon Artweeks	29
Parish Council	22
Peter Alan McCarthy	14
Photo tributes to Queen	8
Pollard and Willoughby Estate	26
Pre-school news	8
Queen's birthday celebration	8
Roy Hampton	15
'Royal Mail' scam	24
Spring Flower Show	5
St Birinus School news	9
St George's Day parade	3
Talking Point	3
Useful information	35
Village bus times	32
Wallingford Corn Exchange	32
Wallingford Country Market	31
Wallingford Gardening Club	31
Wallingford Historical Soc	31
Wallingford Museum	31
Wallingford U3A	32
WI	13
Wildlife garden	24

Dorchester News

April 2016

A DoT view

Within a few days the Spring Flower Show will be upon us; a real marker that winter should be over and the weather can only get warmer. We've already had lots of daffodils, as can be seen from this month's front cover, but from now on there should be a succession of colour in our borders and hedgerows, until the summer is over. Let's not go there until we have to but for the moment look ahead in enjoyable anticipation of what is to come.

To accompany the Blackthorn which should be coming out about now, the highlight is the Flower Show already mentioned. Take a look at the categories on page 5. There are thirty-nine and only twenty-four involve produce of any kind. So even if your daffs have gone over or you don't have onions that you've stored over winter, you can make a ginger cake or a swiss roll, or dig out that photograph that you are proud of having taken and make it fit a subject beginning with 'u'.

Later in the month we'll see the first Bluebells and can attend the official opening of Overly Mead Piece, when the Hurst Water Meadow Trust will celebrate this amenity of which we can all now take advantage (see page 11). They are even laying on tea.

Right at the end of the month, St Birinus School will be anticipating May with their May Dancing on 29 April, (page 9) just as the Lilac reaches its peak. Go and support the children. New colour, new life, another summer heading our way.

Ian Brace

Editorial Team

Ian Brace, Kathy Glass

Distribution Co-ordinator

Maurice Day

Copy Deadlines for Dorchester News

May edition 8 April
June edition 13 May
July/August edition 10 June

Advert Deadlines for Dorchester News

One week before copy deadline
Items in electronic form may be sent via e-mail attachment to e-mail address at foot of page.

For newsletter for other churches in the Team send to admin@dorchester-abbey.org.uk by the 9th of the preceding month.

Advertising in Dorchester News

There are ten issues per year with double issues in July/August and in Dec/Jan. For an eighth of a page the cost is £11.75 mono, £12.75 colour; for a quarter page £23.50 mono, £25.50 colour; for a half page £35.25 mono, £38.50 colour and full page £47.00 mono, £51.00 colour.

All charges are put towards the cost of the paper, printing and postage of copies being sent outside the village. You may supply your own advert or we can produce the advert and artwork for a fee.

To incorporate a logo or artwork, please supply a copy, preferably via e-mail: to address at foot of page or contact the editor.

One-time adverts, please send a cheque, payable to 'Dorchester Abbey PCC', to Nick Forman, Willoughby House, 73 High Street, Dorchester-on-Thames, OX10 7HN.



Deadline for
May
Dorchester
News

email: dorchesternews@dorchesteronthames.co.uk

Through the church's year we are encouraged to remember a variety of people who have changed our world and borne witness to particular Gospel truths. Some are recalled as saints, often recognised during their lifetimes as showing a special holiness in the way they followed the path of Jesus; some are martyrs who died in service of God's self-giving love; some are those whose particular contribution was only gradually realised long after their lifetimes. There is such a rich variety from social reformers to intrepid missionary bishop travelers, to those of particular serenity and wisdom that it is an ongoing reminder of the sheer diversity of character types and gifts which have made up the body of Christ here on earth across the centuries and continue to do so.

One of my favourites while I was training for ministry after working abroad was Dietrich Bonhoeffer, whom we remember on April 9. He was a German Lutheran pastor, born into an academic family in 1906 and studying in America and Spain before returning to Berlin. He felt

compelled to bear witness to the way he saw the society of his time being drawn towards destruction and when the Nazi party came to power, he made a famous radio address warning of what lay ahead in the cult of the leader (the Fuhrer), which was cut off midsentence. He set up a theological training seminary for students within the 'confessing church' which stood out against the social and theological drift and was increasingly harassed by the authorities and eventually banned from publishing as he tried to keep an alternative moral voice heard. After aiding the resistance through the early part of the war, he was arrested in 1943 and executed in the last year of the war. His book *The Cost of Discipleship* has become a modern classic.

That activist witness in the midst of dramatic events stands in stark contrast to divines such as Julian of Norwich whom we remember on May 9. A series of sixteen religious visions that she experienced early in her life provided her with so much material to reflect on, and try to make sense of, that she decided

to become an anchoress attached to the church of St Julian in Norwich, setting herself apart for God and living in a cell culminating in the first book written by a woman in English, *'Revelations of Divine Love'* which still speaks with such clarity to new generations of readers.

Later in May we are encouraged to celebrate the lives of the Wesley brothers, John and Charles, of whom it is written that 'his thousands of hymns established a resource of lyrical piety which has enabled generations of Christians to rediscover the refining power of God's love.' The annual remembrance goes on to include the contributions of St Francis to deepening our understanding of our place within the beauties of creation, the Desert Fathers questioning life back to its essentials through their ascetic endeavours, John Donne writing poetry which celebrates life's exuberance with such exquisite sensibility that we see how we all fall short.

In this Easter season let us thank God for such an amazing cloud of witnesses to guide his pilgrim people.

Dorchester May Morning Monday May 2

Two a Part will again welcome May by singing from the top of the Abbey tower and then give a free concert in the Abbey. Funds raised from breakfasts and donations will be shared between the Abbey and the Nasio Trust for the Medical Centre at their project for AIDS orphans and destitute children in Kenya.

Continental Breakfast

From 8.30am in the Abbey

Two A Part Sing from the Tower at 9, then in the Abbey



Breakfast tickets £5 **Please buy them in advance** from Dorchester Co-op.

£5 keeps a child in food for a month,

£10 provides a teacher for a month



St George's Day Parade

On **Sunday 24 April** the Thames Chiltern District Scouts will be holding their St George's Day Service in Dorchester Abbey. The parade will set off from the Recreation Ground at about 2.15pm accompanied by the Wantage Silver Band and will travel the length of the High Street to the Abbey. After the Service the parade will return along the High Street.

We hope that you will enjoy seeing the parade and apologise for any inconvenience caused as the High Street will be closed to traffic during these periods.

Scouting is very popular with young people in this area and we are expecting a good turn out. Thames Chiltern District covers most of South Oxfordshire.

The London Chorus in Dorchester Abbey

On **Saturday 14 May** at 7.30pm the London Chorus are coming to Dorchester to give a concert in the Abbey in memory of a past Dorchester resident, Douglas Jupp, who sang with the choir for more than 50 years and was their treasurer for over 40 years. The concert is to raise money for 'Parkinson's UK' for research and treatment of Parkinson disease.

The concert will include Handel *'Dettingen Te Deum'*, *'Zadok the Priest'* and *'The King Shall Rejoice'* and work by J S Bach *'Air on the G string'* and Telemann's *'Tempo Giusto'* and Zipoli's *'Elevazione'*. The conductor is Ronald Corp and the orchestra is 'Instruments of Time and Truth'. Tickets will be available on the door, £25 and £15.

Please come and support this excellent London choir and Parkinson's UK.

Susan Jupp

JENKS OXFORD

Arboricultural Contractors

Jenks Oxford are based here in Dorchester and so are even more convenient for all your tree needs.

Ask for a free site consultation and quotation on our full range of general and specialist services from our qualified professional staff.

Tree felling & removal - Pruning - Tree surveys - Diseased or unstable trees - Stump removal... and much more, just ask!

£10 million public liability Insurance. County Council & Arboricultural Association approved contractor.



FREEPHONE
0800 458 3328
info@jenksgroup.co.uk www.jenksgroup.co.uk



UNIQUE PLANTED BASKETS & CONTAINERS

250 varieties
& colours of basket
and patio plants
all grown
on the nursery

Summer Bedding • Veg Plants + much more...

01491 833831

Seasonal Openings: April to July • September & October • 7 Days a week 10am - 5pm

142a Wantage Road • Wallingford • OX10 0LU

www.busbaskets.co.uk

Massage Matters

Massage isn't just a luxury – it is a perfect way to combat stress or muscular discomfort, whatever your age or lifestyle.

Unwind, relax and feel rejuvenated by having a fully customised treatment from a trained holistic therapist.

Based at The George Hotel, Dorchester. Entrance off the High Street.

To book please call **07725062259** or email massagematterstone@gmail.com – for more information visit www.massagematters.me.uk – gift vouchers available.



April at the Hart

“HARTY” SUNDAYS



Enjoy a super Sunday Lunch at The White Hart in delightful Dorchester on Thames
Served from 12 noon through to 8pm from £18



10% off Hotel Bedroom bookings for Dorchester residents – great for your party guests or weekend stays
Ask Sean, Marie or Dawn for details

Saturday April 23rd
St George's Day
Celebration
from 7pm



3 Course
Traditional English Dinner
Fun Quiz

Traditional Sing-song

See menus on
www.white-hart-hotel-dorchester.co.uk/eat

Guest Ale £3.50 a pint



01865 340074

RULES

1. The Show is open to any person residing in Dorchester-on-Thames, Burcot, Drayton St Leonard and Berinsfield.
2. No exhibitor may exhibit more than one exhibit in each class, excepting Classes 14 & 21, where three entries may be made.
3. All entry forms, together with fees, to be submitted **not later than 7.00 pm on Thursday evening** before the show.
4. Entries in Classes 16 & 17 must have been grown by the exhibitor for at least the previous 4 months. Other plant classes with the exception of Classes 23 & 24 must have been grown by the exhibitor. Classes 25 - 39 must be made by the exhibitor.
5. Exhibitors must provide their own dishes, stands etc. Every care will be taken of the exhibits but the committee will not be held responsible for loss or damage.
6. On the relative merits of the exhibits, the opinion of the judges shall be final, but the committee reserves to itself the decision on any other points in dispute.
7. The Committee reserves the right to inspect any competitor's garden or allotment before or after the day of the show.
8. **All exhibits for competition must be staged between 9.00 am and 10.30 am on the day of the show.**
9. All competitors must leave their exhibits on show until after the Prize giving and raffle and clear immediately afterwards.
10. Any protests must be made in writing before 3.00 pm on the day of the Show, accompanied by 50p. deposit which shall be forfeited to the Committee if the protest is not upheld and found to be groundless.
11. Any exhibitor infringing any of these rules shall forfeit all claims to any prize.

Definitions

Class 1: Long trumpet: one flower on a stem; trumpet as long or longer than petals.

Class 2: Short trumpet or cup: one flower on a stem; trumpet shorter than petals.

Classes 23 & 24: Any natural material may be used.

Please label varieties whenever possible
Please note Rule 4

DORCHESTER-ON-THAMES SPRING FLOWER SHOW

and
Plant Sale/Raffle
in
DORCHESTER VILLAGE HALL
on
Saturday 9th April 2015

Viewing 2.30 pm- 4.00 pm

Prizes will be presented at 3.40 pm
followed by Raffle Draw

Exhibitors will be competing for:

The Robert Soffe Cup (Long Trumpet Daffodils)
Short Trumpet Daffodil Cup
The Helen Belcher Cup (Pot Plant)
Vegetable Cup, Spring Flowers Cup
Domestic Classes Cup
Britain in Bloom Cup
The Blackwell Photography Cup
Certificates for Floral Art and Vegetables
Mary Tame Handicraft Plate

Class

- 1) Daffodils, long trumpet 1 variety - 5 stems
- 2) Daffodils/Narcissi, short trumpet or cup, 1 variety - 5 stems
- 3) Daffodils/Narcissi, miniature, 1 variety - 5 stems
- 4) Daffodils, double - 5 stems
- 5) Narcissi, multiple heads - 5 stems
- 6) Narcissi/short trumpet daffodils - 5 stems, 1 of each variety
- 7) Tulips, 1 variety - 3 stems
- 8) Blossom from a tree or shrub, 1 variety - 3 sprays
- 9) Blossom from a tree or shrub, 3 varieties - 1 stem each
- 10) Polyanthus - 5 stems, mixed colours allowed
- 11) Pansies/Violas - 5 stems, mixed colours allowed
- 12) Hellebores, 1 variety - 3 stems
- 13) Hyacinths, 1 variety - 3 stems
- 14) Any other spring flower, 1 variety - 3 stems (up to 3 entries)
- 15) Mixed Spring Flowers, 5 stems

- 16) Plant not in flower, in pot not more than 10" - not exhibited in last 3 years.
- 17) A flowering plant, bulb or bowl of bulbs of same variety, not more than 10" pot.
- 18) Leeks - 3
- 19) Stored Onions - 5
- 20) Stored Shallots - 7
- 21) Any other vegetable or fruit (up to 3 entries)
- 22) Rhubarb - 3 sticks

FLOWER ARRANGEMENT

- 23) An arrangement in shades of yellow (forward facing, 18" x 18" x 12")
- 24) Spring arrangement in a glass (space 9" x 6" x 6")

COOKERY

- 25) Swiss roll
- 26) Ginger cake
- 27) Sour dough loaf
- 28) Pork pie
- 29) Cup cakes - 3
- 30) Pot of curd

PHOTOGRAPHS - all unmounted and not exhibited previously.

Conventional or digital camera
Must not be manipulated or enhanced in any way. Max 8" x 6"

- 31) Machine or machinery
- 32) Subject beginning with 'U'

Image manipulation - up to A4
33) Any subject

HANDICRAFTS

- 34) Any item of needlecraft, incl knitting
- 35) Any other handcrafted item

CHILDREN (Please state age on exhibit)

Aged 9 and over:

- 36) Cheese straws - 5
- 37) Photo of a pet

Aged 8 and under:

- 38) Cereal crispie cakes - 3
- 39) Photo of a pet

ENTRY FORM

Please return no later than **7.00 p.m. Thursday, 7th April** to: Christina Stores, 55 High Street

Class Nos

Full name of Exhibitor

Address.....

Telephone No Entry Fee 5p. per Class

Email address (for Flower Show reminders and schedule only).....



Beauty Essentials

Indulge yourself
in a full range of
Beauty Treatments
& Therapies

Manicures & Pedicures, Gel Overlays,
Facials & Eyelash Tints, Waxing & Electrolysis,
Massage & Spray Tanning, Pamper Parties,
Bridal & Special Occasion Makeup,
Children's Glitz & Glam Sparkle Parties,

GIFT VOUCHERS & MONTHLY SPECIAL OFFERS - VISIT OUR WEBSITE FOR DETAILS

Beauty Essentials has moved from The George Hotel, Dorchester to
Beauty Essentials, Rear of 81 High Street, Wallingford, OX10 0BX

Mobile Beauty Treatments available on request.

www.beautyessentialsoxon.co.uk | 07583 371198

Here to help you find and book the perfect holiday....



Arranging a holiday can be very frustrating and challenging. But with Full Circle Travel, it doesn't need to be.

- We are a local, independent travel agent with mature, professional and well-travelled consultants.
- You do not pay more for our service but get a lot more than booking direct.
- You can book with your favourite tour operator but book locally.
- We are ABTA and AITO members and ensure your money is safe in an uncertain world.
- We listen, we care and are passionate about finding you the perfect holiday.
- Search 'Full Circle Travel' at www.trustpilot.co.uk to read what our clients say about us.

A selection of operators you can book with us at no extra cost to booking directly:

Club Med - Cox and Kings - Abercrombie and Kent - Mark Warner - Audley Travel - Explore - The Adventure Travel Company
Royal Caribbean - Carrier - Western & Oriental - If Only - Beachcomber - Exodus - Kuoni - Viking River Cruises - Seabourn
Riveria Travel - Silversea - Regent Seven Seas - Classic Collection - Prestige Holidays plus many more - please just ask.

Full Circle Travel, 59 St Marys Street, Wallingford, OX10 0EL

www.fullcircletravel.co.uk

T: 01491 833227

E: holiday@fullcircletravel.com

Culham & District Horticultural Club Wednesday 20 April

'Less well known trees and shrubs suited to the smaller garden.'
An illustrated talk by Kevin Hughes. Kevin runs the nursery at Heale House in Wiltshire and will bring plants for sale.



Meetings are held at the Abbey Guest House, Dorchester on Thames at 7.30pm

Membership is open to all those who have a keen interest in horticulture (annual subscription £15)

and visitors are welcome at the meeting (suggested donation £2). For more details telephone **01235 850381** or email judy@tiggercat.me.uk



Hempcroft Allotment News

April is the 'let's go for it!' month on the allotment but proceed with caution. Hopefully we will all have the benefit of the lengthening days and warm sunshine but beware there is always a price to pay with the risk of hard night frosts never far away. Hold back and wait a few days or a week rather take a risk. It isn't the loss of seedlings or young plants that causes the problems but the loss of your precious time and effort that you will never get back that does the damage. The allotment will always catch up eventually.

One of our allotment holders overheard two ladies commenting on the allotments as they walked along Watling Lane. They were saying how impressed they were by the neatness and tidiness of the allotments. It is certainly noticeable that this year there is a greater feeling of commitment to maintaining the individual plots so thank you to all of you.

Sowing and planting

Continue with planting out the seed potatoes; aim to complete the job by the end of April. Be prepared to cover the emerging shoots of the earlies with soil if a frost is forecast. Complete the planting of onion sets and carry on making successional sowings of beetroot, carrots, parsnips, lettuce, spinach, spring onions, kohlrabi, radish, turnips, early peas. On a prepared seed bed sow the seed leeks and summer cabbage. Replant broad beans to replace any which were lost through the winter because they bolted in the exceptionally warm weather.

Edward Metcalfe

Dorchester on Thames Historical Society Wednesday 27 April

7.30pm in Dorchester Village Hall (back room)

A talk by Anne Ransome on
*'Co-operative Societies in Oxfordshire
from 1853 to the present day'*

Come and find out more about the history of our own Co-op in the village.

Visitors and new members are always very welcome to our talks and outings.

Gail Thomas
Chairman

Dorchester on Thames Historical Society Visit to Baddesley Clinton Saturday 2 July 2016

This moated manor house has been a sanctuary since the 15th Century and was the home of the Ferrers Family for 500 years. Baddesley Clinton was a sanctuary not only for the Ferrers family but other persecuted Catholics in its priest's holes. The gardens include fish pools, walled garden and a lakeside walk.

The Barn Restaurant serves hot meals, drinks and snacks and light refreshments are available in the Stables. Picnics are welcomed. There is a National Trust Shop and second-hand bookshop.

9.15 Departure from Bridge End Car Park.
11.00 Baddesley Clinton.

I will organise the tickets for entrance to the House (these are timed and there is a guide and I cannot book in advance) and Gardens after which you will be free to explore on your own. Members of the National Trust please remember to bring your membership card.

4.00 Departure.

The cost is £29 (coach and entrance to Baddesley Clinton), cheques payable to Dorchester Historical Society. Please send to **Gail Thomas**, 14 Herringcote, Martins Lane, Dorchester on Thames, Oxon OX10 7RD. (Tel. **01865 341977** or email: gail.thomas8@btinternet.com)



Enjoy Gardening?

Open your Garden for our
Village Gardens Open Day

Saturday 9 July

We are looking for gardens of all shapes and sizes for this popular event and would be delighted to hear from you!

This year we are raising money for Dorchester Abbey.

Steph Forman

01865 340434

steph@forman.org.uk



A Celebration of Community

to commemorate H.R.H. Queen Elizabeth II

90th Birthday

Saturday 11 June and Sunday 12 June 2016

A number of special events will be held during the weekend for all residents of Dorchester. These include an exhibition of photographs and a celebration of the gifts that people use to support the life of the Abbey.

We hope to hold a Family Fun Sports Day – details still to be fleshed out and will be explained more in the next issue but essentially a lot of daft games at the Recreation Ground designed for everyone to get involved.

Other events may include a street party or family picnic but we would welcome any other input, so if you or your club or society would like to have a say or get involved, please contact Claire Andersson.

Sue Booy & Claire Andersson (on behalf of the Parish Council)

Claire@claireandersson.co.uk

01865 341455

Photographic tribute to the Queen

As part of Her Majesty The Queen's 90th birthday celebrations in early/mid June an exhibition is planned. It will show the history of this community throughout Elizabeth II's life. To help us to represent each decade from 1920s to the present day we would welcome offers of original or scanned images from Dorchester's everyday life and special events throughout that period. Do not forget those pictures from the 1970s, 80s and 90s that you have. They are just as valuable as those from earlier decades

We can make arrangements to scan photographs if you wish. If you are doing the scanning yourself please ensure that it is done to a high resolution.

We would also welcome artefacts but please bear in mind that the exhibition will be held in the Abbey over several days and therefore occasionally unstaffed.

To discuss this further please contact Denise Line on **07765 302346** or denise.line@btinternet.com.



Pre-School News

Our new gardener has done a great job tidying all of our outside space so now that the weather has turned, the children are getting even more pleasure from playing outdoors.

We are fast approaching the end of term which means parents and grandparents must be flat-out with their Easter Bonnet creations! Winners in next month's edition.

As for next term, we kick off with the theme 'All About Me' and we'll begin the choreography for our May Pole dancing!

mobile LIBRARY

Alternate Thursdays, 2.55–3.15pm

Lay-by opposite the War Memorial

14 April, 28 April



St Birinus School News

School News

We had a very unusual start to our assembly at the beginning of Term 4, as we discovered some very strange footprints on the floor and even up the wall near the fire exit in the hall.

There were some fantastic ideas about what could have made those type of footprints and how they could have possibly entered and exited the school – it was a total mystery (to most!). It was the start of our new Big Write topic of Monsters and Aliens, in which the children are letting their minds go wild with ideas of a variety of monsters and even a quick look at the mystery of the Loch Ness Monster.



World Book Day gave us the excuse to dress up as book characters, this year was no different and I must say the variety of costumes was brilliant – there had certainly been a great deal of effort in

their preparation. The children also shared books with each other across the school as well as some of the Year 6 children reading with the Pre-school children.

On the theme of books, we recently introduced our 'Kung-Fu Reading Challenge' to encourage more reading across the



school. The word Kung-Fu refers to any study, learning, or practice that requires patience, energy, and time to complete – which is very important in the art of reading. The children work their way through the various coloured belts to reach the Black level, the Kung-Fu Reading Master. We are all heading for the White level as I write this.

Our next event will be our **May Dancing** on the **29 April** at 1.15pm - please come and join us on our playground for this annual event.

Russell Leigh
Headteacher

Dorchester St Birinus CE Primary School



Graceful Gardens DESIGN

Gardening Service

by RHS qualified female gardener

Garden design / Plans / Landscaping / Planting
Demonstrations / Consultations / Pruning / beds and borders...

Call 07814 691040

email: sundaycarrigan@gmail.com

www.gracefulgardens.vpweb.co.uk

Quotations by appointment References available
Wallingford and surrounding villages covered

CP GROUNDWORKS

Colin Passey

Mini Digger/Skip Loader with Operator

Footings, Oversites,
Drainage, Patios,
Driveways,
Site Clearance, etc.



Mob: 07853612505

Tel: 01491 598856

colin.passey@icloud.com

"No job to big or too small"

Anderson | Orr
Architects



Contact us for a free and informal
discussion about your project

01865 873936

info@andersonorr.com

www.andersonorr.com

We are so lucky here in Dorchester with our beautiful surroundings and community spirit. It really is a special place to live and raise our children knowing that the whole village looks out for their welfare.

It is easy to feel guilty when we see the plight of the migrants, especially those with children making their perilous journeys across Europe to seek security and a better life for their families and if you are like me, you may want to help but not quite sure how.

Hence, I went along to a public meeting recently at St Ethelwold's House in Abingdon to find out more about a compassionate response to the migrant crisis. St Ethelwold's House is a spiritual centre open to all faiths, which offers a place to rest and find peace and also runs a Bed & Breakfast to support its objectives. The meeting included an address by Oxford City of Sanctuary explaining the real problems facing genuine asylum seekers, as opposed to economic migrants, in this country and a moving account of a visit to the refugee camp at Calais.

We discussed how difficult it is for migrants to reach the UK and claim asylum as well as practical measures that could be taken to help. Accommodation, befriending and language lessons would help those already in the asylum process and demonstrates that there are many who welcome refugees to this country.

It was agreed that a new group called "Host Abingdon" linked to Oxford City of Sanctuary's Host

Oxford initiative would be set up to offer temporary accommodation to asylum seekers in the local area including one of the B&B rooms at St Ethelwold's House. As I write this, St Ethelwold's have already accepted their first guests.

So, could Dorchester be part of Host Abingdon? It is often assumed that rural communities are not suitable as they don't have the necessary support services, but this is not necessarily the case. All hosts would be vetted and matched to compatible asylum seekers. There will be many men and women who have left very similar communities who would feel at home here. Wouldn't it be great if Dorchester could extend its hand of friendship to those in need by hosting one or more asylum seekers?

There are also other ways we could help.

- A Sanctuary Seekers Fund has been set up by St Ethelwold's House to raise £500 per month to cover the cost of the accommodation offered there. We are planning to run a tea-room session on **Sunday 7 May** to raise money for this fund. Please come and support.
- Lobbying South Oxfordshire District Council to accept Syrian families under the Syrian Vulnerable Person Resettlement Programme announced by the government.
- Donating items (clothing, sleeping bags, hygiene products) to groups who regularly travel to Calais and Dunkirk to help refugees in camps.



If you wish to find out any more information, you may find the following links useful.

St Ethelwold's House
www.ethelwoldhouse.com

Information on the Host Abingdon Programme can be found here.

Oxfordshire Refugee Action Network Facebook group
 Information on groups who travel to Calais and Dunkirk

Or contact me if you would like to share your views.

Claire Andersson
Claire@claireandersson.co.uk

.....



JOHN MASEFIELD HOUSE
 BURCOT BROOK, NR. ABINGDON, OX14 3DP



Saturday 9th April
Radley College Sports Centre
2pm - 4pm

Why not come along and join the volunteers, staff and supporters of John Masefield House as they attempt to swim a combined marathon distance. Whether you swim one length or one mile, it will help us achieve our goal.

All sponsorship and donations will go towards the JMH dining patio appeal.

For further details or a sponsorship form please contact:
David Williams on 01865 340324
 or e-mail: david.williams@leonardcheshire.org



Refugees queue to board a train at Gyekenyes in Hungary

Earth Trust April events

Discover and Play

Friday 1 April, 10am-12pm

Forest School for the under-5s. Join the Earth Trust for a morning of play and discovery in our woodlands. Forest School offers hands-on learning experiences in a natural environment. £4 suggested donation per child, accompanying adult(s) free. No need to book.

Nettles – Nasty or Nice?

Sunday 3 April, 10am-12pm

Stinging nettles may pack a bit of a punch, but did you know they're used by both people and wildlife? Join us at the Earth Trust Centre and get inspired by our delicious nettle recipes, and discover which other species like eating them too. £4 suggested donation per child, accompanying adult(s) free. Drop in.

Clumps Club

Monday 4 & Tuesday 5 April, 9am-5pm

Wild adventures for 8-12yr olds! Different outdoor activities each day, please check web for details. £30 per child per day; booking essential: **01865 407792**.

Wildlife Wednesday at Wallingford Castle Meadows

Wednesday 6 April, 2pm-4pm

Our roving Wildlife Wednesdays visit a different Earth Trust community nature reserve during each school holiday. This half term, come and join us at Wallingford Castle Meadows (OX10 8DL) to learn about local wildlife and have lots of outdoor fun! £2 suggested donation per child, accompanying adult(s) free; no need to book.

Family Bushcraft

Friday 8 April, 10am-4pm

Bring the whole family and go wild in the great outdoors! Explore the woods, make shelters, learn how to make a fire and use a knife safely. We'll cook on the fire but bring a packed lunch too. £20 adult, £15 child; booking essential: **01865 407792**.

How to Grow Greens

Saturday 9 April, 10am-3pm

Join The Little Salad Company to learn about growing your own salad leaves. The workshop will provide all you need to get started on growing in the upcoming season, from sowing seeds, dealing with pests and getting the most from your crops. For amateurs and more experienced growers. £20; booking essential: **01865 407792**.

Wildlife Photography Walk

Sunday 10 April, 8am-10am

Local photographer Andy Hough will provide top tips on capturing beautiful images of wildlife during this walk around the nature reserve. Bring your own camera. £20; booking essential: **01865 407792**.

Lighting the Queen's Birthday Beacon

Thursday 21 April, 5.30pm-6.30pm

Join us on top of the Wittenham Clumps to light a celebratory beacon to mark the Queen's 90th Birthday. Exact time of lighting TBC, please check the Earth Trust website for details.

Newts, Frogs and Toads

Friday 22 April, 7.45pm-9.30pm

Come and find out all about the amphibians that live in the ponds in Little Wittenham Wood. Ben Carpenter will lead a guided walk filled with fascinating facts, then we'll use nets and torches to get a closer look. £5 adult, £2 child, free for Earth Trust Friends; booking essential: **01865 407792**.

Hurst Water Meadow Trust News

Official Opening of Overy Mead Piece

Our new meadow at Overy Mead Piece (downstream from Dorchester Bridge) will be officially opened on **Thursday 21 April at 2.30 pm** by Graham Scholey, Conservation Technical Specialist at the Environment Agency. All are welcome and if you don't often walk in the meadows this could be an opportunity to see what the Trust is doing on the newly acquired land. There will be parking in the field car park at the bridge (opposite Overy Lane) for those who are unable to walk from the village and those coming from afar.

Following the opening there will be afternoon tea in the Village Hall. **Please inform Gillian Johnson, by Sunday 10 April, if you intend to join us for tea.**

Conclusion of winter work on the meadows

Much work has been carried out on the meadows during the winter months in line with the Trustees' management plan. In early March eleven Hurst volunteers were joined by fifteen members of Sonning Common Green Gym (SCGG) to spend a morning planting a hazel copse and adding further plants to the hedge across the Hurst. By the time you are reading this, SCGG will have joined us again for work on Easter Saturday. Also in March our own 'home trained' team of hedge-layers continued to work on the Hurst hedge.

Closed season for fishing 15 March – 15 June

Fishing is prohibited on the River Thame during the closed season, when fish will be spawning. We are asking all **dog walkers** if they could try to keep their dogs out of the river during this period to avoid disturbing the fish and the river bed. We know that this is a 'big ask', especially as when there are no fishermen present the river is all the more enticing, but your co-operation will help the fish population.

Tree branches on the meadows

We have been accumulating 'habitat piles' of wood from winter clearing work, but some of the branches are finding their way out onto the meadows. Once the grass starts to grow tall these branches become hidden ... until they get caught in the hay-making machinery. Then the Trust has to pay for machinery repairs. If you see branches on the fields please could you help us by removing them to a safe place in the undergrowth?

Thank you to all who use and respect the meadows and help us to keep them in good shape.

Gillian Johnson
Honorary Secretary
01865 340925

Andrew Clements
Honorary Treasurer
01865 340753

Website: www.hurst-water-meadow.org.uk

Earth Trust April events continued

Public Exhibition: Improving visitor facilities at the Earth Trust Centre

Thursday 28 April – Sunday 1 May, times vary

Would you like to find out about plans to improve visitor facilities at the Earth Trust Centre? Drop in to this informal exhibition; check website for opening times and further information.

As always, more information can be found on our website www.earthtrust.org.uk. All events take place at the Earth Trust, Little Wittenham, OX14 4QZ unless otherwise stated.

Chiropodist

Third Thursday of each month, 1.00–4.00 pm
Belcher Court Sitting Room

21 April

For an appointment, Jo Bennett, **07903 133469**
Cost £15



10% off

- MOT's
- Servicing
- Repairs
- Diagnostics
- Bodywork
- Welding

Free collection and delivery

T: 01865 890548

F: 01865 890198

E: fourwinds-garage@btconnect.com

Terms and conditions apply



The George Hotel

DORCHESTER-ON-THAMES

A beautiful 15th century coaching inn set in an idyllic location

We offer a variety of modern British dishes, exotic treats and a senior citizen menu
Join us on Sundays for traditional roasts served with our signature Yorkshire puddings

Ala carte menu available 12-3pm and 6pm-9pm daily

Senior citizen menu available daily from 12pm-3pm at £5.95 per head

Enjoy four fine real ales in our olde worlde pub



Christmas bookings now being taken

To reserve your table please call
01865 340404

www.thegeorgedorchester.co.uk

A New WI Year 2016-2017

Thursday 14 April in the Village Hall at 2.30pm
Lynn Boreham 'The Alexander Technique'
Visitors are very welcome to all meetings other than our AGM.
A donation of £3.00 will be appreciated.

Thanks to the generosity of members we have a new Committee
President: Pauline Kenway- Jackson 01865 340746
Secretary: Gill Haworth 01865 340775
Treasurer and Vice Chair: Susan Jupp 01865 341066
Programme and Events: Anne Parker (01865 340746)
Welfare: Irene Cadman
Haley Poole
Publicity: Jill Love (01865716557)
Many thanks to our past Programme Secretary Audrey Houlston
for all her hard work producing the Programme for 2016-2017
and for continuing to offer her expert help to Anne when needed.

Membership

We happily welcome new members. Any woman over 18 years
of age is very welcome. New ideas are always appreciated.

Subscription made out to Dorchester On Thames WI for
£37.50

The sub is divided as follow:-

DOTWI £18.00

OXFWI £8.40

NFWI £11.10

Remember you may belong to two Institutes. To your second
one you pay a further £18.

Payment to Susan Jupp 341066

Many of us attended Rene Hender's 90th Party at the Village
Hall on 6th February. At the February WI meeting Rene was
presented with a beautiful plant of pink roses with our fond
wishes.

Some Dates for your Diary

Thursday 22 June 3pm Tea in Pauline Kenway-Jackson's garden

Sunday 10 July WI running Tea room for Institute funds

Thursday 11 August River Outing at Henley

Thursday 6 October hosting Shillingford Group meeting. Colin
Oakes 'Gutsy Women A History of Women's Achievements in
London.'

Thursday 10 March at 2.30pm in Village Hall
AGM and Bring and Buy Stall for ACWW projects

This was well attended including by 4 of our 5 new members.
We hope to have raised just over £ 90 for the

ACWW projects. Members also brought pennies for friendship;
the amount will be known by the next meeting.

Part of our AGM was conducted by Christine Denton our WI
Adviser.

We hope to see as many of you as possible at the meeting on
14 April.

Please bring friends and visitors if it's possible.

Best wishes from your President

Pauline Kenway-Jackson

Dvorak : Stabat Mater

Friday 6 May 2016

7.30pm Dorchester Abbey

Saturday 7 May 2016 5pm

St John the Evangelist Church, Iffley Rd

East Oxford Community choir will be joined by Ensemble
Vocal Interlude from Grenoble and exciting young soloists for
two performances of Dvorak's very moving cantata 'Stabat
Mater', which was completed in 1877 after the deaths of his
baby daughter, and his young son, as he tried to cope with
his grief. This work, his first religious piece, became very popular
in England in the 1880s, but is heard less frequently now.

Tickets are available through TicketsOxford or on the door
£12/ £10 concessions/£3 under 18s

Urgent Village Notices

The Parish Clerk sends urgent village notices via e-mail as
the occasion warrants. If you would like to be added to his
e-mail list, please send a message to
parishclerk@dorchesteronthames.co.uk.

When you receive the message, you will view only your
own e-mail address: as a security precaution, all other
residents' addresses are hidden. This is standard practice to
protect your e-mail address.

CLIVE THE HANDYMAN

OVER 35 YEARS EXPERIENCE IN
THE BUILDING TRADE

PAINTING & DECORATING
PATCH PLASTERING
WOODWORK, TILING
FASCIAS, ROOFING/GUTTER
REPAIRS

REPOINTING, BOXING-IN
SMALL PLUMBING JOBS
BLINDS & CURTAIN RAILS
GENERAL HOUSEHOLD
REPAIRS

NO JOB TOO SMALL
ALL WORK GUARANTEED
FULLY INSURED

GIVE ME A RING ON
01491 411321 OR
07766 540117

Peter Alan McCarthy 1925-2016

My grandfather, Peter Alan McCarthy, was born on August 27th 1925 in Homerton, London. His family moved to Chingford when he was 3 years old. By the age of 16 Grandad was an entry boy at Lloyds of London until he was enlisted in the RAF two years later in 1943. After the war in Europe ended he was posted to Indonesia to fight side by side with the Gurkhas. He often spoke fondly of those days to me, declaring love for their curried goat, roast beef and days spent drinking rum in the heat, which, he noted, the Gurkhas drank by the half pint.

After little over a year in Indonesia, Grandad took a journey that was too complex to believe, acquiring a Samurai sword along the way. He returned home to his job at Lloyds. There he proceeded to work hard to climb the ladder, eventually becoming a deputy underwriter, whilst indulging his passion for sport playing cricket, football and later golf. Indeed, Grandad was one of the founding members of the Chinghopper Cricket Club, and one love of his life introduced him to another, his wife, Valerie. Being a star bowler for a club which also included my great uncle and great grandfather, may have helped, but I am sure he had his charm as well. They married in 1955, and by 1961 were parents to two children, my uncle Richard and mum, Sheila. He settled with his young family in Shenfield, Essex, a quiet village favoured by many West Ham footballers – I guess you can't have everything.

Grandad's career took a sideways step as he left Lloyds and became the first underwriter at the newly formed company Factory Mutual International.

In 1978 the family suffered a devastating blow, as Valerie passed away after a battle with cancer. My grandfather's remaining decades were spent mostly living alone, but he was content to do so because, as he said, he couldn't imagine anyone would come close to Valerie. And so, Grandad flung himself into his work, travelling to Frankfurt one week in four and visiting many other countries as was necessary. I recently saw a picture of him at his retirement celebration, my uncle one side of him, my mum the other. He was rosy faced and laughing, probably due to the numerous empty glasses which adorned the table in front of them. FMI wished him luck in his retirement, with his intentions stated to play golf and garden. These plans were certainly fulfilled.



I have been fortunate enough to spend a great deal of time with Grandad, and I feel I learned a number of things about him. He was a fiercely independent, disciplined man, but he was never too proud to ask for help when he needed it, and this I admire him for. Also his sense of humour was as wicked and dark as my own. It became traditional for me to tell him a 'certain joke' at the lunch table on Christmas Day. I won't repeat it here because it is not for civilised company. I will just say that for the last few years I haven't needed to reach the punchline before we were both laughing.

In 2004 Grandad moved from Shenfield to Dorchester on Thames and for the next six to seven years he and I played golf together nearly every Sunday. He often said we should tape the conversations we had on the course, but that wouldn't have been wise. I can tell you about one occasion that sticks out in my mind. By this time Grandad was about 84, and his eyesight wasn't what it was. Although he could see the ball in front of him, once he had hit it he was reliant on me to locate it. Inevitably after every stroke he would ask where his golf ball was and I would direct him. During one Sunday game, and numerous questioning regarding the location of Grandad's golf ball we were both becoming frustrated, Grandad that my guidance wasn't clear enough, and me that he couldn't see that the ball was at his feet. Finally, the situation got the better of both of us, and when Grandad demanded to know where his ball was I replied, 'you are either senile or blind, it is right in front of you,' to which he responded, 'I am going to wrap this bloody club round your head in a minute'. Laughing, I said 'I would like to see you try old man'. Thankfully, he laughed too.

Despite many such exchanges, by the end of our rounds we always shook hands and Grandad would smile and say, 'I enjoyed that, Sam'.

I miss my grandfather very much and there will be times, perhaps on Christmas Day when I want to tell his joke, when I will miss him even more. When this happens I intend to follow his instructions to my mother, left in a letter, 'When something makes you laugh, think to yourself 'Dad would have laughed at that,' and laugh again'. I think that is how he would want to be remembered by us all. I'll finish with what I said to him at the end of each golf round, 'Thanks for that, Grandad. I had fun.'

Sam McCarthy-Primett



In the Greet Hall, Warborough, by Chartered Physiotherapist, fully certified with the Australian Physiotherapy and Pilates Institute.

Physiotherapy and Sports Injuries Clinic

Matwork Pilates class: Tuesdays 9am
(£10/class or £50 for 6 weeks)

Reformer Pilates class (up to 4 people).
Thursdays 11am, 4.30pm, 5.30pm (£15)

Ante/Post Natal Pilates classes tbc:
subject to demand

Please contact **Anna Jenkins**, email: anna@oxfordsportsphysio.co.uk
phone: 01865 858955 or 07825 269287.
Website www.oxfordsportsphysio.co.uk

ARBOCARE LTD. TREE AND GARDEN SPECIALISTS



NATIONAL TRUST APPROVED ARBORIST

- Established 20 years
- Tree surgery & landscaping
- Tree survey / reports
- Grass & hedge cutting
- Fencing

Cert Arb RFS (Distinction)

Freephone 0808 155 5815

Mobile 07778 811 136

www.arbocare.co.uk



Roy Hampton 1933-2016

Roy was born in August 1933 in Winchmore Hill, Enfield to John and Dolly. John was an engineer and when war was declared and Enfield was being bombed, Roy remembered helping his father reinforce their Anderson shelter with a steel structure, extra-large aerial for the wireless and a bed that could be converted into a table and chair.

As the war progressed Roy and his brother Bernard were evacuated to Andover to live with their grandparents Walter and Emma Chittenden. He remembered on the build up to D-Day a stream of tanks passing by and how excited everyone seemed to be.

After the war they moved back to Winchmore Hill and when Roy turned 16 he left school and received an apprenticeship at Sangamo Weston in the engineering department.

He then joined the Southgate Young Conservatives where love blossomed when he had to help the beautiful Audrey Collins on a 'smash the plate' stall for the local fete. In 1957 Roy and Audrey married and he also joined the public relations department for Metal Box Head office, based in Baker Street, London.

Roy and Audrey moved from Enfield to Naphill, Buckinghamshire where Jonathan and Claire were born.

Roy joined the Princess Risborough Round Table, where he helped organised fundraising events and had fond memories of a particular Charity Ball event where the music was so loud that it had to be shut down by the police! He always enjoyed his time being part of the team, and Jonathan and Claire remembered after one rather merry Round Table's meet (this was the 70s) Roy drove home into the garage but without stopping in time and they have vivid memory of his prized lawnmower being catapulted through the back of the garage wall into the garden!

Jonathan remembered spending many hours helping Roy re-building his beloved Hillman Imp engine.

In 1972 the family moved to Purley on Thames as Metal Box head office had relocated to Reading. Roy's work was to set up exhibitions world wide and charity sporting events for The Lords Taverners, where Claire has a wonderful memory of sitting on a wall with Roy and having a chat with Eric Morecombe.

In 1985 the family moved to Dorchester on Thames where they immersed themselves into village life and especially enjoyed meet up with friends for one of Richard's Pies at The Plough and then a pint with Chick and Linda in the Fleur.

When Audrey fell ill they moved down to Barton on Sea hoping the sea air would help with her recovery.

When their darling granddaughter Daisy was born, they were always over the moon seeing her, and hearing about her exciting and creative adventures that she had been up to.



In 2000 Audrey sadly passed away and the family were so pleased that Roy wanted to come back and live in Dorchester, where he spent many lunch times enjoying the company at the different pubs, popping into the Co-op and being fed and watered by Liaan and his team at The George.

Roy loved to join the family on holidays, whether it was skiing in France or down to Cornwall where he loved being propped up in a comfortable chair watching the world go by and enjoying a treat of afternoon tea.

When Roy became ill, especially over these last two years, with the great help of his family, the Berinsfield district nurses and Marie his main carer, Roy was able to stay in the comfort of his home, whilst watching his favourite *Dads Army* TV programmes, and eating lots of his favourite food.

Dad/Grandad is sadly missed, but we know he is now at peace next to his beloved wife, Nana our Mum.

Based on the tribute delivered at the funeral by Roy's daughter Claire.

The family thank both Canon Sue and Father John Osman for delivering a wonderful service, and the kindness and support extended by so many in the village at this sad time.

Letter to the editor

Speed limits



Dear Sir

The so called 'blanket local authority policy' of 1999 was reflected in the Department of the Environment, Transport and the Regions' guidance in 2000: *'Tomorrow's Roads: Safer for Everyone'*. It stated that a standard speed limit of 30mph in villages should be the norm and said:

'Children should be able to walk and cycle in safety. They need the freedom to use the roads for their social development and exercise for their general health and fitness. We want to make it safer for everyone to encourage healthy travel choices.'

Sixteen years on, this is even more relevant, with the need for healthier lifestyles, the increase in cycling and with 2,000 vehicle movements a day through our little village.

'Tomorrow's Roads' also set goals to reduce the number of children killed or injured in road accidents.

Since 2000 there has been an increase in the number of serious accidents in the Abingdon Road. These statistics do not, of course, record the number of near misses or close shaves so we have to ask: how many more accidents would there have been without the 30mph limit?

No one gets up in the morning expecting to have an accident but happen they do, and many happen within a few miles of home. If we do not protect our children, our community and our environment, then who will?

Malcolm Lucas

Fishmonger

The travelling fishmonger comes to Dorchester every Tuesday and will stop at :

10.10 - 10.20am in High Street near War Memorial

JEMINI

LET US DELIVER YOUR MESSAGE BY
 HELIUM BALLOON
 LUXURY CHOCOLATE DELIVERY
 SOFT TOY DELIVERY
 CHAMPAGNE & WINE DELIVERY
 FLOWER DELIVERY


 RING OUR CREDIT CARD HOTLINE
OXFORD 01865 242726
39-40 THE COVERED MARKET OXFORD

mmaunder
 Painting & Artistry

**Skilled Painter, Decorator
 and Artist**

Marcus Maunder
07814725918
maundermarcus@gmail.com

Immaculate painting and decorating
 carried out by an artist/perfectionist!
 Experienced in working on period
 properties.
 Bespoke Murals and Artwork.

Please call or email for further
 information or to arrange a quote.

AKT | Planning+Architecture
 Chartered Town Planners and Architects

AKT is a small established local practice based in Dorchester with a wealth of experience in all aspects of planning and architecture. We pride ourselves in providing a personal and bespoke service and have experience with listed buildings and conservation areas.

Contact Sarah or Paul King for an informal chat to discuss your ideas or projects.
 Tel. 01865 340989




www.archkingtech.co.uk

A member of the Royal Town Planning Institute
 and Royal Institute of British Architects


 TEL: 01235 516614 / 07850 474803
 

PIPELINE DIRECT
 PLUMBING & HEATING SPECIALIST
 SHOWERS & BATHROOMS
 POWER FLUSHING


 EMAIL: pipelinedirect@gmail.com

BRYANS LOCK SERVICES
Phone: 01865 340138. 01491 520820.
01235 420742

Locks Supplied-Fitted-Serviced-Opened-Replaced for
 Timber- Aluminium- Steel, PVCu doors & windows.
 Keys cut to pattern.
 Keys to number for office furniture.
 Supply Safes, Document & Media Cabinets & Files
 Locks to Insurance Company Specifications.

Master Locksmiths Association Approved Company.
 Reg. No. 002623

**Dorchester News
 online**

Remember that Dorchester News is available to download from the Abbey website each month (go to the homepage at: **www.dorchester-abbey.org.uk** and click on Dorchester News) and from the village website (go to **www.dorchester-on-thames.co.uk** and click on the Dorchester News tab).

Remind your friends and family who have moved away from the village that they can catch up with what's going on in Dorchester.

The online version occasionally contains more information than articles than is in the printed copy.

FOR A BEAUTIFUL GARDEN

Choose from our wide range of quality garden services: design and construction, plants and maintenance. We tailor-make our service for you.

For a free, no-obligation visit and written estimate from RHS qualified staff, call 01844 279430,
 or email info@brannfordsgardens.co.uk
 Full details at www.brannfordsgardens.co.uk


BRANNFORDS
 Garden Makers
 DESIGN LANDSCAPE PLANT MAINTENANCE

The English Music Festival



Martin Yates conducting the BBC Concert Orchestra – and the audience – during the first night of the 2015 English Music Festival

Where can you hear the World Première of an orchestral work by Ralph Vaughan Williams played by the BBC Concert Orchestra and a song recital by up-and-coming star Kathryn Rudge alongside two Shakespeare celebrations, a concert of a cappella music of the 16th century, one of the country's top brass bands, toe-tapping dance-band music from the 1920s and 30s, and a late evening of folk music – all taking place over one weekend? All this – and more – can be heard at this year's English Music Festival, which is held each year in and around Dorchester on Thames during the second May Bank Holiday.

The first English Music Festival (EMF) was held ten years ago, and was founded by the young pioneering entrepreneur Em Marshall soon after graduating from university. *'During my teenage years, I became aghast at the lack of representation of British composers in the concert hall, and determined to rectify this imbalance. Thus I conceived the idea of setting up a music festival dedicated to celebrating the glories of this repertoire.'*

Researching suitable venues for the Festival in 2004, Em was struck by the perfection of Dorchester on Thames: *'The village leapt out at me for its ideal location – an idyllic rural setting, yet within easy reach of London – and the Abbey itself combines architectural splendour with marvellous acoustics. Add to this the presence of several hostels within walking distance of the Abbey, and I knew that this would be the perfect place to hold the Festival.'* More than ten years later, Dorchester on Thames remains the Festival's home.

The principal concerts, including the large-scale choral and orchestral events, are held in the Abbey, with the pre-concert talks for which the EMF has become noted taking place in the Abbey Guest House; while other events,

including several chamber-music and song recitals, are held in Radley College and in All Saints' Church, Sutton Courtenay. A special feature is the late-evening concerts, held in the Abbey's side chapel, which are always highly atmospheric: there is something very special about the sense of warm enclosure that results from the contrast of the darkness outside and the gently-lit interior of the Abbey.

The EMF has built up an impressive portfolio of national and international publicity and support. The opening concert each year is given by the BBC Concert Orchestra and is broadcast on Radio 3; and the Festival's enviable reputation for staging the World Premières of works by important British composers such as Britten, Delius, Gurney, Holst, Howells and Vaughan Williams has attracted wide interest, with audience members coming from as far afield as the USA and Australia. Yet, despite this success on the global stage, the EMF remains loyal to its roots in Oxfordshire, with a warm, family atmosphere pervading the whole event. Em herself met her future husband, the violinist and musicologist Rupert Luck, during preparations for the 2010 Festival; and the couple

(surnames now double-barrelled) have a young son, Tristan, who attends many of the EMF's events. More widely, a vital part of the Festival's success lies with the activities of the Local Friends' Group, an assemblage of volunteer enthusiasts who live in and around Dorchester and who tirelessly promote the EMF through publicity circulation as well as providing invaluable support in many forms during the Festival itself. The camaraderie that results, many members of the Group meeting in the 'George', the 'Fleur-de-Lys' or the 'White Hart' for a sociable drink or a meal, undoubtedly results in an infectious and attractive air which infuses the weekend's events.

The Festival celebrates its tenth birthday this year, and, thanks to the

committed support of Rev. Sue Booyes, whose generosity and involvement have been vital to

the Festival's success thus far, and the unstintingly loyal help of the Local Friends' Group, the EMF looks set to continue into its second decade with a proud record of achievement to date. This year will see a landmark Festival. The BBC Concert Orchestra, the pianist and radio presenter David Owen Norris, The Queen's Six (featured on a recent cover disc for *BBC Music Magazine*), the Jaguar Land Rover Band, The City of London Choir, the English Symphony Orchestra, and the Old Swan Band – all will be making their way to Dorchester on Thames at the end of May for a weekend of joyfully exuberant, energetic and celebratory music-making.

And what of the next ten years? Founder-Director Em Marshall-Luck is characteristically and buoyantly enthusiastic: *'We have a number of tremendously exciting plans afoot for the future. Dorchester Abbey has proved to be a very happy home for the first decade of the Festival, appreciated*



The New Foxtrot Serenaders thrill the audience at last year's EMF

and loved by audiences, artists and Festival staff and helpers alike. We hugely look forward to the next decade in Dorchester and to providing both residents and visitors with more stunning performances, gorgeous works and scintillating World Premières.'

The English Music Festival takes place from **Friday 27 to Monday 30 May 2016** inclusive in Dorchester Abbey, Radley College and All Saints' Church, Sutton Courtenay. For further information, please visit www.englishmusicfestival.org.uk; or contact **Em Marshall-Luck** for a full programme brochure (tel.: 07808 473 889; email: em_marshall-luck@englishmusicfestival.org.uk).

A 10% discount on all tickets is available for readers of Dorchester News when purchasing tickets in person. To take advantage of this offer, please present the advertisement contained in this issue at the Box Office in Dorchester Abbey from Friday 27 May.



Founder-Director of the EMF, Em Marshall-Luck, with her violinist husband Rupert and their son, Tristan

Focus on... Dorchester Abbey Museum

Go through the Abbey lych-gate opposite The George, and up the path to the Abbey Guest House. There, sharing a door with the tea-room, is one of Dorchester's gems, the Dorchester Abbey Museum. It may not be huge, although it is certainly larger than most villages can boast, but it is important and it is fascinating.

Go inside. It is open from Easter to October with no entry charge and you will find a treasure trove of displays and artefacts associated with Dorchester from the archaeology of the Bronze Age to the social history of the middle of the twentieth century, to recent filming of Inspector Barnaby's comfortable family-viewing adventures. This is a remarkable length and breadth of scope; even the British Museum does not attempt to cover all this.

This is possible because of the extraordinary length of time that there has been a settlement in what we now call Dorchester. The Dyke Hills are Bronze Age, the dig on the allotments each summer excavates

remains of the Roman town, and a Christian settlement has been here since 635AD. Items relating to all of these periods are turned up or seem to turn up of their own accord on a fairly regular basis. Having a well-run and accredited museum is important if these artefacts are to be kept in the village, together with the more recent social history.

The Museum itself goes back around 55 years to when the American benefactor Miss Edith Stedman determined that a museum would be of help in educating children about the village. Local families had given a number of items to the Historical Society and a home was found for these in the Abbey Guest House and the museum was founded. These days it is run by a management committee, which reports to the Parochial Church Council, and which works closely with the Historical Society. The management of the museum is in the hands of volunteer curator Anne-Marie Joffrin. She took on this role nearly a year ago when the previous curator, John Metcalfe, stepped down.



Edith Atkins's Story

Edith's story tells how local families endured financial hardships throughout the war. Edith Flux was an upstairs maid at Bishop's Court. She married George Atkins of Dorchester in November 1913 and resided in Queen Street.

War times were very hard for Edith and her experience was not unusual. 'A British infantry soldier earned 1 shilling a day, often less than men earned in civilian life. Consequent hardship was not uncommon for wives and families, scant thanks for the sacrifices made.' D P McGregor *Lest We Forget*, 2004

Edith was obliged to help the extended family on the allotment and had to take in washing to make ends meet.

Monday: A day of hard physical work. Water had to be drawn from the well, or pump, and the copper filled. Washing was done in a small bath or tub with a little soap or soda which often made hands very red and painful.

Tuesday: Ironing day. Flat irons were heated on the stove. Clothes were aired on the clothes horse around the fire.

Extracts from "Dorchester Life, 1912" by Mary Tame



Edith, George Jr and Thomas in late 1916 early 1917. The original photograph was carried throughout the war by George Snr, and subsequently treasured by Edith.

*Extract from display panel:
Women in World War I*

John had taken over in 2004.

The museum was short of money and in need of some refurbishment. So, being a man with a clear vision for the museum, he sent to auction an antique sideboard which was in the museum but of no relevance to it, and used the £2,200 that he got for it to set about upgrading the exhibits. Hand-drawn and pasted signs and notices were replaced with new ones properly designed with the help of a designer. Following that he managed to get some grants from the Museum Development Board, and in 2006, jointly with the Institute of Archaeology in Oxford, a major grant from the Heritage Lottery Fund and other donors.

More recently some funding has come through the South East Museum Development Board. This body has also been extremely helpful in the museum getting Arts Council England accreditation, an achievement which demonstrates that Dorchester Museum has attained national standards. In turn this has helped other museums, such as

the Ashmolean in Oxford, to have confidence in loaning items for display in Dorchester, in the knowledge that they will be looked after.

One of the many things that the Museum can be proud of is the Cloister Gallery in the Abbey, which is organised and run by the Museum. In 2006, this was one of the final ten projects long-listed for the Gulbenkian Prize, where it was up against the likes of the Cabinet War Rooms, the Roald Dahl Museum and the eventual winner, SS Great Britain. And it is still just as good today. Have you taken a look recently?

As with all museums, the Abbey Museum holds more material than it can display. For the curator, striking a balance between what is shown to the public and what is held in reserve, as well as the priorities regarding cataloguing and indexing new material as it comes is a constant concern. Anne-Marie is quite clear that this should be a museum of the village, about the village and its people. She is equally aware that what makes our museum different from most is the archaeological and Roman history of the area and the artefacts associated with that. It is this difference that means that we get funding



John Metcalfe and Anne-Marie Joffrin

and grants from public bodies that keeps our museum in its excellent state. A lot of documents are held about life in Dorchester, many donated by villagers as part of their family histories, and in particular some recent donations of photographs and documents from the late Miss Bowditch's family. Whilst it is not possible to display all of these, one of Anne-Marie's aims is to have all of these catalogued on the database so that they can be easily accessible to anyone who wants to research their family history or the social history of Dorchester. As much as possible of this will be digitised so that it can be

accessed online.

An important exhibition this year will be Denise Line's *'History of Dorchester through pictures'*, which will transfer to the museum after it has been displayed in the Abbey for the Queen's birthday event.

But it is not only recent artefacts that get donated by villagers. John recalls the occasion a few years ago when an 80-year old resident of the village donated three complete Roman pots which she had dug up in the High Street when she was an 11-year old, along with various other Roman pieces. The rest had been donated to the Ashmolean, but she had kept these pots as flower pots – complete with holes drilled in the bottom – ever since.

Anne-Marie has also been working on developing the education programme along with Abbey Education Officer Margaret Craig, to welcome school groups and set school activities in the Museum. She also wants to open the Museum to the Midsomer Murder tours and U3A buses that visit Dorchester. With that at least partly in mind, the museum shop is being re-thought so that everyone can find a card, gift, book, or an educational item relating to Dorchester.

Strengthening links with local schools is something that Anne-Marie is very keen on, and the Museum will take part in a national programme called 'Takeover

Day' in the autumn. All of this reinforces the initial tenet of Edith Stedman: that the museum should exist to help educate local children.

The museum is run by a number of volunteers who do everything from documenting and cataloguing new entries during the winter, to staffing the museum when it is open and helping and guiding visitors, to planning and erecting displays. More volunteers are, of course, always wanted. If you would like to get involved, just pop in when it is open and sign yourself up. Anne-Marie will be very grateful.

Those volunteers handle around 4,000 visitors who come to the museum each year during the six months that it is open. The hope is that that number will increase with improved co-ordination with tours and the other attractions of Dorchester. Some come here to go to the museum, others discover it and are pleasantly surprised...and they say so. In a recent survey, they said how much they like what is on display:

'Well presented and made interesting by artefacts displayed'

the range:

'Good social history. Brilliant early, early stuff.'

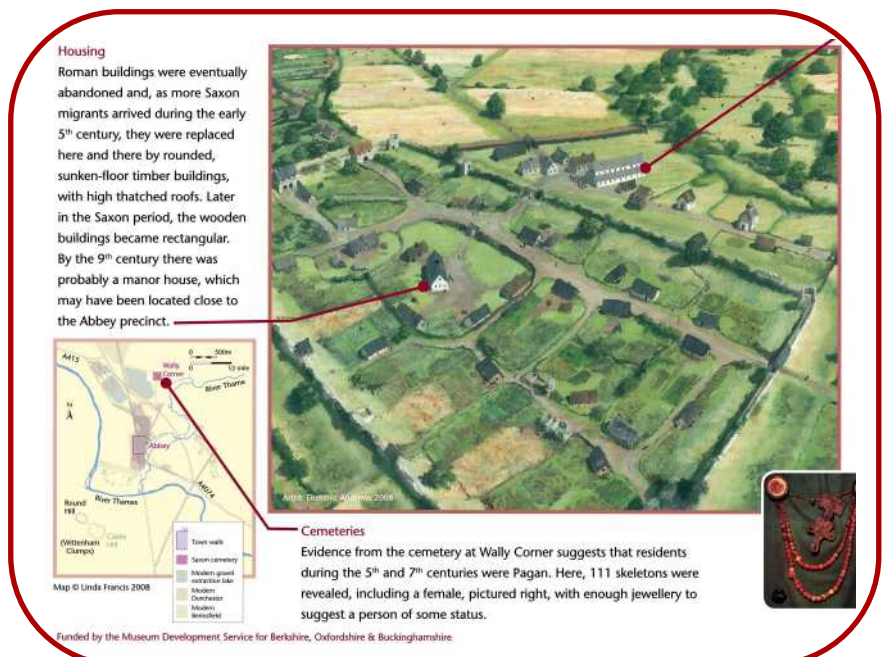
and the staff:

'Informative. Helpful, interesting volunteer on desk.'

Many people may come for the Midsomer Murders tours. But they then go away from the museum knowing that Dorchester is so much more than a back-drop for a television programme.



Inside the museum



Extract from display panel: Saxon Dorchester

THE TENTH

ENGLISH MUSIC FESTIVAL

26-30 MAY 2016
DORCHESTER-ON-THAMES, OXFORDSHIRE

**10%
DISCOUNT
ON ALL TICKETS**
on presentation of this advertisement

The English Music Festival celebrates its tenth anniversary with a thrilling programme of World Première performances of major twentieth-century British composers, overlooked masterpieces and much-loved favourites from artists including the BBC Concert Orchestra, English Symphony Orchestra and rising-star mezzo Kathryn Rudge. Events range from early music from The Queen's Six, through the World Première of a major work by Ralph Vaughan Williams, to the toe-tapping New Foxtrot Serenaders, as well as the complete extant music by George Butterworth, on the centenary of his death, in conjunction with Radley College. Join us for the most exhilarating EMF yet!

For further information contact Festival Director Em Marshall-Luck at em.marshall-luck@englishmusicfestival.org.uk or the EMF Information Line on 01535 272054.

www.englishmusicfestival.org.uk

FindersKeepers™



Property. Properly.



finders.co.uk

Whether you are an experienced landlord or just starting out, we can help you.

Call us now for a free market appraisal.

01235 467967



Henry Brown
Office Manager



ALTOM

TREE CARE LTD



Tree Felling
Height Reductions
Stump Grinding
Landscaping • Fencing
Grass/Hedge Cutting
Patios • Turfing
Maintenance Contracts
**SEASONED LOGS
FOR SALE**

For a reliable, professional service
Mob: 07958 759747
01844 339 833
FULLY INSURED & FREE QUOTATIONS
Email: altomtree@gmail.com
www.altomtrecare.co.uk

LB PLUMBING

Toilets, taps, immersions, showers,
leaks and more,
no job too small

Fully insured, free estimates,
no call out charge

**Call Lee 01491 834484/
07981642688**

BODY CONTROL PILATES®

BCP level 3 certified teacher specialising in back & joint care,
sports rehab, pre & post natal and
Parkinsons Disease

Beginners and Mixed Ability Classes in Benson
and Dorchester On Thames
121 sessions available for personalised
programmes

To book contact Claire on 07801 298 978
www.millstreampilates.co.uk
claire@millstreampilates.co.uk

VICTORIA DYDE

Curtains and Soft Furnishings

Challis Farm
High Street
Long Wittenham
Abingdon
Oxon, OX14 4QH
01865 407197

mcknight1967@gmail.com

Bell Motors

Behind H Cafe at the Berinsfield roundabout

MOT's while you wait
£15 discount on MOT's when you quote this advert

On site MOT bay and Workshops.
All makes and models catered for
Need a service give us a call.

Electronic diagnostics:~ engine management, ABS, air bags all undertaken.
Need a SERVICE. (**10 % discount** when you quote this advert)
We supply and fit exhausts, brakes, batteries
We will carry out any MOT work required. (tyres and air con please call for quote)

**Free collection of your vehicle,
or we will take you home and collect you upon completion.**

We will come out for breakdowns/recovery as needed.
Welding, you break it we will try and repair it, and not just your car!!
Garden machinery not starting we may be able to help?
All credit and debit cards welcome.

MOT`s 01865 341039
WORKSHOP 01865 341155
MOBILE 07931970392

St Mary's Dental Practice

Dr Ash Ratti (BDS Hons) Kings College London
www.stmarysdental.co.uk

21a St Mary's Street
Wallingford Oxon OX10 0EW
Tel 01491 825252

We are a family orientated Practice located in the centre of Wallingford providing care and consideration from all members of my team to help provide you with all aspects of your dental requirements.

For further information, or make an appointment, please call my Receptionist on 01491 825252

STEVE WILKINSON PROPERTY MAINTENANCE

Painting, Plastering, Stonework,
Fencing, Patios, Repointing,
Carpentry, Garden Tidying, Etc.

Telephone: 01865 891554
Mobile: 07885 538514

Parish Council Notices Monthly Meetings

In April the Parish Council will hold its meeting on the second Wednesday which is **13 April**. The venue will be the Village Hall and the meeting will start at 7.30 p.m. The agenda for the meeting will be displayed on Village notice boards at least three clear days in advance. All are welcome to attend and, at the beginning of the meeting, may raise any matter of concern.

From your county councillor... Lorraine Lindsay-Gale March 2016

Budget

As reported last month, prior to Christmas Oxfordshire County Council went out to consultation on possible additional budget cuts totalling £51m, which at the time was believed to be the worst-case scenario. It was hoped that when central Government confirmed the local government settlement that not all the 95 savings measures consulted on would have to be taken. As it transpired, due to a change in the funding formula which unexpectedly penalised shire counties, the settlement was even worse than expected and the total additional savings required now total £69m.

The Council has found a series of short-term measures, including drawing on reserves, to buy time before we have to make yet more new savings to cover the difference between £51m and £69m. Our approach remains the same: we want to try to protect the most vulnerable people in Oxfordshire – by which we mean those adults who need help with basic personal care and children at risk of abuse or neglect.

By law, OCC has to produce a balanced budget and Cabinet has made the necessary recommendations that will be debated by Full Council on February 16th. This includes a proposal to raise Council Tax by 3.99%.

Property, back office and reserves

There have been misleading media reports that OCC could reduce its financial challenges by selling property, cutting the back office and drawing on reserves. The reality is that OCC has already sold more than 100 properties realising over £62 million that has been used on capital projects. Furthermore, 26 leases have been terminated saving over £2.1 million pa. With regard to back office functions, the number of directors has been cut by 50%, senior managers by over 40% and staff generally by 30%. Various services are already shared with other councils and partners, and further options are being explored to find even more back office savings. Reserves are already being drawn upon and will soon become low compared to expenditure.

Backlash against shire counties settlement

Up to 50 MPs are understood to have signed a letter demanding changes to the Government's proposed settlement with local government, which was published last month. The letter calling for shire councils to be given more money has been sent to the Communities Secretary, Greg Clarke, before a final deal is laid before the Commons within the next fortnight. The Government insists the proposal is a good deal because it also allows local authorities to set their own business rates and increase council tax to make up the shortfall. But one Conservative MP said: 'There are a lot of us who are absolutely furious about this. We accept the need for cuts, but it's about fairness. How can it be right that rural councils are facing cuts of 33 per cent, but urban areas – where it is cheaper to provide services – are facing a reduction of just 19 per cent? In Wales, it's just 8 per cent and Scotland 4 per cent.'

Annual Parish Meeting

The Annual Parish Meeting will take place in the Village Hall on **Tuesday 3rd May** commencing at 7.30. The agenda for this meeting, which will include the Annual Report of the Parish Council Chairman, Cllr Chris Hill, and presentation of the Parish Council's draft accounts for the year ended 31st March 2016, will be posted on Village notice boards at least 7 clear days in advance.

Both our County and District Councillors are expected and will be available to answer questions.

Please see the May edition of Dorchester News for more information.

Contacting the Parish Council

The Parish Clerk is Geoffrey Russell of The Pigeons (next to The Fleur de Lys), 5-7 High Street, Dorchester-on-Thames OX10 7HH

Telephone (during normal office hours, please, unless an emergency) **01865 340759**

e-mail: parishclerk@dorchesteronthames.co.uk

Cllr Chris Hill, the Chairman of the Council, can be contacted via chairman@dorchesteronthames.co.uk

More information about the Village is available at www.dorchesteronthames.co.uk

Rise of apprentices boosts thriving Oxfordshire economy

Recent growth in the number of Oxfordshire young people choosing apprenticeships as the key to forging a career is outstripping regional figures. While the number of apprenticeship starts for 16-24 year-olds fell across the South East by 2.5 per cent in 2014/15 compared with the previous academic year, Oxfordshire's figure rose by 2.4 per cent, as employers took on 2,510 new starters.

Temporary new home for Oxford Central Library

Continuing work to transform the Westgate Shopping Centre in Oxford has led to OCC's Central Library temporarily moving to a nearby location. Redevelopment work at Westgate includes the complete transformation of the front of the current library building. The existing frontage of the Central Library will be replaced to become part of the new curving wall forming the south side of Bonn Square marking the new entrance to Westgate. Once complete, the new library will feature a new entrance foyer, a refurbished and extended children's library and new feature windows with views over Bonn Square and Castle Street. While this work takes place, the location for the temporary library will be in the nearby Castle Quarter. Current plans are for the existing library to close to the public on February 27, with the new smaller temporary library opening its doors at the end of March. The library will remain there for 18 months until the new Westgate Oxford opens in October 2017.

Views sought on plans for future of Hill End

A consultation on plans to secure the future of popular outdoor education centre Hill End has been launched. Site owner Oxford University and OCC, which manages the centre, are planning to investigate setting up an independent charitable company to run the activities and unlock new sources of funding. Due to the budget cuts previously referred to, OCC can no longer provide the investment needed to improve services and meet on-going repair and maintenance costs. Both the university and OCC wish to ensure Hill End continues to provide an excellent service for children and young people, supporting their social and emotional health and well-being. The consultation does not affect current or future bookings and, if taken forward, transition to a charitable company would mean 'business as usual' for schools and other service users.

From your MP...

John Howell

March 2016

As I write this month final preparations are being put in place for the Chancellor's budget and, as always, there is much speculation as to what will be included and the effect that it will have on each of us. Once the Chancellor has made his speech and the Budget is published there will be a flurry of media reports and analysis and everyone will make their own judgement on the merits of different measures. Whatever the detail the Chancellor is determined to do his best to get our country's finances into the black by 2020. Difficult though this is it is something that I fully support.

Another big issue is the EU Referendum. The media circus started some while ago and since the announcement of the date of the Referendum on 23 June this year the pace has increased. Importantly this is a referendum and not a parliamentary vote for MPs over anyone else. Every single person registered to vote will be able to do so and my vote will be but one amongst many. I am happy to state my personal position but am primarily concerned that everyone has access to robust sources of information on both sides of the argument so that each can be informed to make their own decision. Such sources are unlikely to be at the forefront of what the mass media present and I am pleased that a section has been set up on the Parliament website which gives a lot of information on the subject. It includes links to briefing papers from the House of Commons library, which is non-partisan, and also presents an impartial view of the different arguments and opinions on both remaining in the EU and on leaving. The website address is www.parliament.uk/business/publications/research/eu-referendum/

I have long been a supporter of our membership of a reformed EU and remain so. The Prime Minister has worked hard to get Britain out of 'ever closer union' and give national parliaments the power to work together to block unwanted EU laws. We said that we would make Europe more competitive and we have delivered that in this deal with commitments to cut red tape, in particular for small business. We have also put an end to the something for nothing welfare culture for EU migrants so that we can control immigration from Europe.

In a short newsletter I can only offer limited information. If you would like to receive more information on my work I would be pleased to add your email address to the circulation list. To be added to the list please email me at john.howell@oxfordshireconservatives.com.

For more information about my work please do visit my website which is regularly updated. The address is www.johnhowellmp.com. You can also follow me on twitter @johnhowellmp or on Facebook www.facebook.com/john.howellmp

From your district councillor...

John Cotton

March 2016

The thing foremost in our minds is the terrible event at Didcot Power Station. All of us have those who were hurt or lost and their families in our thoughts and prayers at this time. Anything that we can do to help will be done.

This month has seen a number of important events, all of which affect our residents one way or another.

Council Tax

Firstly, when Council met on 18 February it approved the budget for 2016/2017, which means that, whilst OCC have increased their bill by 3.99% and with a 1.99% rise for the Police and Crime Commissioner, SODC has kept its element of the Council Tax frozen. This has been achieved without cuts to any of our services, which will be maintained at or above their present standards.

Corporate Services Project

This financial 'win' is due, in no small part, to the pioneering work done by SODC in linking with the Vale of the White Horse in commissioning the original outsourcing of services some years ago. Without the experience gained, it would not have been possible for SODC to come to agreement with the four other councils now to sign up to the new Corporate Services Agreement. For SODC there is a saving of around £1million for each year of the new contract. Now that all parties have formally agreed, the work of recruiting the Contract Manager has begun. By now you will have probably heard that our Chief Executive, David Buckle, has decided that this is a good time for him to take retirement. David has worked hard to make SODC the success story it is today, and will be very active in recruiting our new Chief Executive before he leaves us.

Oxfordshire Vision

The third announcement is that the five district councils in Oxfordshire - including Oxford City Council - have announced their bid for devolution by the formation of three unitary authorities. This would mean the abolition of Oxfordshire County Council. If agreed, for us this will mean that SODC will merge with the Vale of the White Horse, taking on many responsibilities presently with the County Council and gaining new powers from Westminster. At the same time, we will manage others such as transport planning and waste disposal, through a combined authority formed by the new unitary councils. Crucially, and possibly uniquely in the country, the plan proposes the transfer of adult social care to the NHS. The needs of rural and city communities are very different and the Oxfordshire Vision proposal will ensure that the new councils replacing the existing two tiers with one, are the best match for those

Civic News

needs. This proposal has cross-party support from all of the MPs within our county - including the Prime Minister - and we hope that everyone will join us in supporting this exciting evolution of local government. More information, and news as it develops can be found on our website

www.oxfordshire.vision/

Team News

Our Food and Safety Team won Team of the Year at an independent Employee of the Year Awards in Oxford. The awards are open to organisations from both the public and private sector, so it's a great prize to pick up. In addition to this the council's legal team has passed their annual Lexcel assessment. This is the Law Society's mark for excellence in management and customer care.

Planning and Development

A public inquiry into 89 homes near Icknield Way in Chinnor was held at Thame Town Hall. We refused permission for this development as the site is not in our development plan and in our view would be harmful to the local area. It was heard at a public inquiry due to the level of interest in the case and because of the similarities with two other cases which we are challenging in the High Court this May. We must now wait for the Inspector's decision later this year.

This year, one of our housing associations, Soha Housing is celebrating the building of its 2,000th home.

Didcot Gateway Update

The Planning Committee unanimously approved outline plans to develop the 'Didcot Gateway' area opposite the station. This is big news as it means we can move forward with exciting plans to breathe new life into this important area of the town. We'll keep you up to date with progress as it occurs.

Bin stickers

We've started putting stickers on bins in Abingdon and Didcot to try and address the ongoing problem we're having with recycling being contaminated with food waste and nappies. This is a trial run, and the stickers have our recycling website address on. If people visit the site they'll see a short message explaining why we're doing it. It's worth having a quick read of the message yourself, so you can respond to any questions you get about the stickers - visit www.morerecycling.co.uk.

Your Package Has Been Seized' Royal Mail Scam Email

Fraudsters are sending out virus infected emails that claim a package has been seized by HM Revenue & Customs upon arrival into the United Kingdom. The official looking scam emails claiming to be from Royal Mail contain a link to a document which will install malicious software on your computer designed to steal credentials like account names, email addresses and passwords.

An example email reads:

Title: Your parcel has been seized
Royal Mail is sorry to inform you that a package addressed to you was seized by HM Revenue & Customs upon arrival into the United Kingdom.

A close inspection deemed your items as counterfeit and the manufacturers have been notified. If your items are declared genuine then they will be returned back to you with the appropriate custom charges.

You may have been a victim of counterfeit merchandise and the RM Group UK will notify you on how to get your money back. Please review the attached PDF document for more information.

Document (RM7002137GB).Zip

Please accept our apologies for any inconvenience this may have caused.

To help the spread of the virus, the email also says: "you will need to have access to a computer to download and open the Zip file". If you receive one of these emails, do not click on any links or download any attachments and report it to Action Fraud.

Protect Yourself

Royal Mail will never send an email asking for credit card numbers or other personal or confidential information.

Royal Mail will never ask customers to enter information on a page that isn't part of the Royal Mail website.

Royal Mail will never include attachments unless the email was solicited by a customer e.g. customer has contacted Royal Mail with an enquiry or has signed up for updates from Royal Mail.

Royal Mail have also stressed that they do not receive a person's email address as part of any home shopping experience.

If you believe that you have been a victim of fraud you can report it online: http://www.actionfraud.police.uk/report_fraud or by telephone: **0300 123 2040**

A Spring in the step out in the wildlife garden

If like me, the onset of Spring brings you new vigour and you want to know what new things you can add to your garden this year to bring in more wildlife.

Look no further than the contents of your wheelbarrow. Arrange log and twig piles comprised of old pruning's from around your garden. Dead wood as I've said before doesn't have to be as thick as my thigh. These provide valuable hideaway places for wildlife, and by planting up with ferns, primroses, or other suitable plants it can become an interesting feature in itself.

Slabs or stones will act as a suitable wildlife habitat, you'd be amazed what lurks under there. Newts often frequent these dark places.

It's always a good time to build a compost heap or a leaf mould bin, if you do not have these already. Children can be engaged for hours digging away in a compost heap, there's an entire world in miniature in there.

Bee homes are now widely available so why not invest in one or take inspiration and build your own with materials hanging around in your garden. Solitary bees use these more successfully than Bumble Bees, but that's just my observation; it would be interesting to hear about your findings.

Bees often colonise these homes in spring, after hibernating over winter. The boxes can be left out over winter, or taken down and stored in a safe place to avoid bees being eaten by predators. Isn't that part of the joy of wildlife gardening though? Helping build the food chains.

Insects are gardeners' friends as often they are natural pest controllers, helping you keep natural balance in your garden during the coming season.

Try going with the flow this season and working with Mother Nature and not pulling against her, as we all have a tendency to do at times.

Happy gardening

Stuart Mabbutt

Wildlife Gardening Specialist

01865 747243

Become a Friend of Dorchester Abbey

The Friends of Dorchester Abbey is an association with a legal identity separate from the Parochial Church Council and raises funds to be used exclusively for the restoration, maintenance, embellishment and improvement of the structure of the Abbey Church and the Abbey Guesthouse. These have included major repairs to the roof and stonework of the abbey, new sound and lighting systems, restoration of the historic wall paintings and a new high altar frontal.

The Friends were formed in 1959 and over the years have promoted and supported social events such as concerts, lectures, flower and craft festivals as well as visits to cathedrals and other abbeys.

The subscription is not fixed, but we do ask for a minimum annual subscription of £20. Life membership is also available for a single payment of £300 person or £500 for a couple.

Details of the work of the Friends together with application forms can be found on the Friends' notice board in the Abbey and on the Dorchester Abbey website www.dorchester-abbey.org.uk

For further information contact the membership secretary,
Mrs Honor Juniper. **01865 343228** or email friends@dorchester-abbey.org.uk



**CHIMNEY SWEEPING
COMPANY
LTD**

- ★ NO FUSS ★
- ★ NO MESS ★
- ★ NO PROBLEM ★

Oxford
Stadhampton
Deddington
Mobile

01865 772 996
01865 400244
01869 337500
07711 443050

**T.W Hayden
Heating Services**

Tel: 01865340720
Mobile: 07813904055
E-mail: Twhayden@tiscali.co.uk

All plumbing and heating works undertaken.
Free estimates.

15 Fane Drive, Berinsfield,
Wallingford, Oxford, OX10 7NB

The Village Mechanic

- ✂ All makes and models seen
- ✂ Full servicing & repairs
- ✂ Prices estimated in advance
- ✂ Full bodywork & machine shop
- ✂ Recovery Service

*"An honest service with honest prices. No more dread
about taking my car to the garage.
They can even arrange my MOT!"
(A member of Dorchester Parish)*



**Call Anne or James now on
(01865) 341503**

Willowfields
No.1 Drayton Road,
Dorchester-on-Thames Oxon OX10 7PJ



Ringrose

Tree Services

Tree care...we care

Insured Qualified Experienced
Telephone: 01865 735235
simon@ringrosetrees.co.uk

*"Your work has exceeded all our
expectations and our beautiful old oak
will now live on!"*

Blagrove Lodge, Fox Lane
Wootton, Nr Abingdon
Oxfordshire OX13 6DE



Truly a Home from Home

Winterbrook Nursing Home

Where Care comes first

- Idyllic setting with picturesque gardens
- 24 hour professional nursing care
- Long & short term care • Convalescent care

Wallingford (01491) 833922

18 Winterbrook, Reading Road, Wallingford, Oxfordshire OX10 9EF

The Pollard and Willoughby Estate

Elizabeth Lane was the last of the Pollard family. They had been Lords of the Manor of Marsh Baldon for generations. In her will, Elizabeth left a cottage and land for a school for 12 poor boys and girls (Baldon School is among the country's oldest of village schools).

Elizabeth married Dr John Lane from Banbury. They spent a great deal of time in Bristol, the great commercial centre of sailing ship days, visiting family and friends. John Pollard's branch of the family had copper mines in Cornwall; he and John Lane thought it would be more economical to smelt the ore near the source of coal, as at that time coal was being shipped over to Cornwall from South Wales. It needed three tons of coal for each ton of ore. So the two men bought land and set up the copper smelting industry near Swansea.

Before her death in 1771, Elizabeth passed her Baldon Estate to her Bristol friend, Christopher Willoughby, a member of a Gloucestershire land owning family. Christopher Willoughby was an extremely good farmer – he improved his livestock with careful breeding, he tried new varieties of wheat, he grew swedes rather than turnips as they yielded more per acre, he had barge loads of rag brought up the Thames from London to Burcot Wharf which he composted to improve the soil, and he also tried out new ploughs and other machinery. His innovations were noted by Arthur Young who wrote about Oxfordshire. He also praised the Davey's

work at Overy. King George III often stayed with his friends, the Harcourts, at Nuneham and when there, went across to Baldon to see all the Willoughby improvements. He was so impressed that in 1794 he made Christopher a baronet. Sir Christopher died in 1808. Sadly, his eldest son, also Sir Christopher, died just five years later – he was hit on the head by a cricket ball. He was up at Oxford. His brother Henry succeeded. Sir Henry, in 1839, gave a plot of land at Bridge End to a group of men on which they built a Methodist Chapel.

When the remainder of the Bertie/Norris estate came on the market, the Willoughbys were able to buy land in Drayton St Leonard and Dorchester parishes, which adjoined their Baldon property, which made the estate almost three thousand acres. In 1861 came the final enclosure acts and Dorchester's big North Field became Field Farm, sometimes known as Willoughby's Field Farm. They built a brick farmhouse and four farm workers' cottages, as well as outbuildings. They also built a few farm workers' houses in Queen Street in Dorchester.

Sir Henry Willoughby died in 1865. He was a bachelor, so the title passed to his brother John. Sir John was twice married and it is said had eleven daughters, but he also had a little boy,

another John, who became Sir John Christopher Willoughby when his father died in 1866. This Sir John spent his whole life in London. In 1894 the estate gave a piece of land at the corner of Queen Street and Crown Lane for the new Dorchester Boys School.

English agriculture was very depressed, the new steam ships replacing sails were bringing in large amounts of more cheaply produced wheat from the great plains of the Americas and of Australia. Then came the reefer ships' refrigerators bringing beef from Argentina, mutton from Australia and lamb and butter from New Zealand. John put the estate on the market. It was completely broken up into lots to be sold by auction – farms, smallholdings, inns, homes, shops, cottages and plots of land. A few people were able to afford to buy their home. Because of the war, 1914 was not a good time for the sale – it dragged on for some years and by 1920 it was ended. No Ashfields, Fettiplaces, Earls of Abingdon or Willoughbys ever lived in Dorchester. They were just absentee landlords. The last Willoughby, Sir John Christopher Willoughby, died in 1918 from war wounds.

MT

Burcot Wharf

In the piece above, Mary mentions Burcot Wharf. But where was it? The following is extracted from www.thames.me.uk.

'Burcot having, as far as I am aware, no current landing, is remarkable, as far as the river user is concerned, entirely for its past.'

For hundreds of years it may have been the highest point which substantial cargoes could reach. Above it were the Clifton shallows, of solid rock and therefore not able to be dredged.

The northern left bank is the much higher bank with the linear development of Burcot with its back gardens to the river. Here, it is said, was the wharf.

The site has been lost! But it must have been substantial. Heavy goods were unloaded here from barges that might have been 85 feet long and drawing maybe 4 feet. Good access by road would also have been required. And it cannot now be seen.'

Some sources say that flint and coal were being brought by barge to Burcot up to the early part of the 20th century.

Anyone with further knowledge should feel free to send information to john@thames.me.uk

Volunteer drivers needed

Could you spare a few hours a month to do something amazing?

We need volunteer drivers to take the disabled people we support to and from our day centre in Burcot.

Disabled people can face challenges in accessing leisure and social activities. By becoming a volunteer driver, you could make all the difference to their lives and help give valuable respite to their carers.

Drivers are needed for:
Monday and Wednesday
at 9am -11.30am and 14.30-15.30pm

No experience is required. Full training will be provided.

To find out more, contact Sahira
on 07961 860410 or at
sahira.belcher@leonardcheshire.org
leonardcheshire.org

**Leonard
Cheshire
Disability**

Parish News



April 1984

Times past

Welcome to an occasional series on what was going on in *Dorchester News's* past, or as here from April 1984, *Parish News*.

For this particular issue I have to thank Vera Baker who, I understand, not only collected the information for the *Parish News* but typed it all up as well!

The view hasn't changed much in 32 years. In this drawing there is a hanging sign that can just be made out to say 'Abbey Weavers' but otherwise the drawing is remarkably similar to the photograph on last month's cover.

Inside, there is a letter from the Revd. Ray Nichols, which today's Talking Point continues. We also learn that Guide Dogs for the Blind raised £123.35 from a jumble sale, and £105 was raised for Kidney Research from a coffee morning in Belcher Court.. Forthcoming fund-raising events included:

- A Hunger Lunch in aid of 'Wantage Overseas'
- A 'Spring Sale' on behalf of the NSPCC (it doesn't say what they were selling)
- The Royal British Legion Bring and Buy Coffee Morning.

The 'Party for Elderly Friends' was being thrown by the Brownies, and DADS were putting on an 'Easter pantomime'. They claimed to be eight months early for the panto season.

The Abbey Tea Room was advertising for cake makers. Little changes.

This issue was printed on white paper, but, I'm told, because it was printed by Leach's of Abingdon for no charge, it would be printed on whatever paper they had available. Consequently it turned up in a number of different colours. How nice to have some unpredictability.

Dorchester Backwater by Mortimer Menpes 1906





The Footsteps Centre has been very busy this month as lots of new children start coming for therapy and our fundraising year is now well and truly underway. We have been collecting feedback from the families who come to Footsteps from all over the UK for three-week sessions of intensive physiotherapy and want to share some of the lovely testimonials with you this month:

"Everyone in Abbie's life is amazed at the progress this time. There is always a marked improvement but the difference this has made to her life this time has been phenomenal. It is the difference between experiencing the world lying flat on her back and engaging with it sat up, able to see all around her and get where she wants to go".

"Lucia would not be where she is today without Footsteps' therapists and fundraisers and donors' all of whom have made an enormous impact on her quality of life. When the child is helped the whole family benefit. Thank you to all at Footsteps and the Foundation".

"We cannot speak highly enough of the Footsteps team, they are amazing and

are helping change the futures of our grandchildren for the better. We are so grateful for the funding we have been given which enables our son to benefit from this amazing therapy which makes him stronger, helps him develop a voice to make choices and to become more independent. I wish all children with physical and developmental disabilities had access to this team, it would really improve their quality of life".

Most families need some help paying for the therapy that their children require and that is where Footsteps Foundation comes in. The charity runs a busy calendar of events and is always on the lookout for support from local businesses, schools and community groups.

Date for your diary – The Wallingford Vehicle Rally & Parade on **May 8** is a fabulous family day out. 2016 is the final year of the partnership for Footsteps Foundation so come and show your support while enjoying the fine collection of vintage and rare cars. Footsteps Foundation will have a big marquee with children's tombola, a raffle and an auction. We are also on the lookout for prizes and volunteers for the day!



DORCHESTER PROPERTY EXPERTS!

Did you know that In House Sales & Lettings is owned and run by a Dorchester resident ?

We thrive on local connections and are happy to offer preferred rates to fellow villagers. We have sold or let nearly all of our Dorchester properties, very quickly and often for the full asking price. This leaves us with a growing data base of buyers itching to live here.

So, even if you just want an up to date valuation on yours, pick up the phone and invite us round.



We only charge a cup of coffee!

01491 839999

Keep it In House.

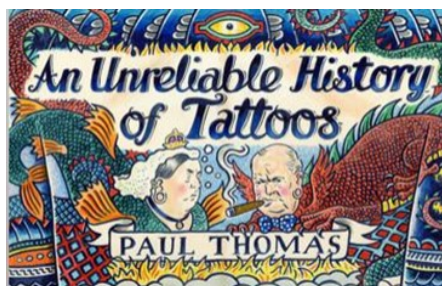


www.inhouseestateagents.co.uk

OXFORDSHIRE

ART

WEEKS



Oxfordshire Art Weeks

14 to 22 May (South Oxfordshire)

Oxfordshire Art Weeks is the longest-running and biggest event of its kind, with 450 studios across the county showing off the work of around 1,000 artists during May this year. In our area, around Wallingford, more than sixty artists will be showing their work. In Dorchester there will be exhibition of contemporary stylised embroidered textiles from Emma Louise Corry and unusual wall mounted 'theatres' by Adrian Brooks. Elsewhere locally there will be woodwork displays at the Sylvia Wood Centre at Long Wittenham. In the same village there will also be paintings by Jane Duff and ceramics and jewellery by Gillian Diggle and Sarah Marchant. Other local exhibitions include a number of artists showing at Stewart Village Hall at Brightwell-cum-Sotwell, including 'digital painting' and a group of six artists working in textiles, ceramics and wood showing work at Ewelme inspired by the fish and water around the watercress beds. Wallingford will host a range of artists working in different media.

The 34th Art Weeks opens in Oxford first from 7 to 15 May, before coming to South Oxfordshire. In Oxford there will be many venues across the city including cafes, shops and the covered market hosting exhibitions, as well as four Oxford colleges not usually open to the public. So you can see mosaics in the covered market, modern oil paintings in Caffè Nero, or a 'Splash of Colour' at Lady Margaret Hall.

In the final week, from 21 to 30 May, the exhibitions will be in North Oxfordshire,

The full programme will be available in early April., and with so many venues to choose from you can have a great time browsing through the brochure. Or you can just go to the local exhibitions where you see the signs and support our Dorchester artists.

Visit www.artweeks.org for full details.

Works on show in Dorchester by artists Adrian Brooks (far left) and Emma Louise Corry (left).

Top left, 'An Unreliable History of Tattoos' is one of the works by Paul Thomas to be seen in Benson.

Neighbourhood Development Plan Report

Since the report in the February Magazine of the Public meeting of 14 January the NDP committee has held further meetings in an effort to complete this draft stage of the preparation of the plan.

This has resulted in the point being reached where we consider that submission of the draft plan to SODC for assessment and comment will be in the near future and may well have occurred by the time you read this article. Public consultation will follow this and photographs will be selected.

It would be appropriate at this time to mention the retirement from this committee of Chris Smith at Christmas and Mike Kitson and John Metcalfe at the last meeting. All have been involved in the working group since its conception and have contributed considerable expertise and knowledge over the past three years. Much thanks are sent from the remaining NDP members and also from the parish council for their hard work and dedication over that time.

Maurice J Day

Music at St Peter's, Wallingford, 2016

14 May: String Quartets by Haydn and Mozart, Mendelssohn Octet.

28 May: The Band of Music - Purcell, Blow, Handel, J C Bach + more!

11 June: Cello & Piano - Beethoven, Schumann, Glazunov, Ravel & Poulenc.

2 July: Piano music by Schubert – Sonatas & Impromptus.

16 July: Guitar recital - Bach, Albeniz, Villa-Lobos, Sculthorpe and Brouwer..

30 July: Saxophone and Piano - de Falla, Piazzolla, Bernstein, Rachmaninov + more!

20 August: Piano Trios by Schubert, Haydn, Bridge and Cecilia McDowall.

10 September: The Villiers Quartet – Elgar, Delius & Faure.

1 October: The Thames Consort (Dir: Jeremy Boughton) Choral & instrumental music by Handel, Vivaldi, Buxtehude and Harold Darke.

All start at 8.00pm at St Peter's Wallingford.

Tickets £14/£12 **01491 824792**

www.musicatstpeterswallingford.org.uk

Paul the Builder

07767 878955

- All types of building work undertaken
 - Extensions
 - Renovations
 - Roofing
 - Stonework/brickwork
 - Paving/Driveways
 - Plastering
 - Guttering
- Lots of satisfied customers in the local area
- References on request



Larkmead VETS

Outstanding Care for Pets, Farm Animals & Horses throughout South Oxfordshire

- Open 7 days a week
- Ample parking and spacious reception rooms
- Extensive modern hospitalisation facilities, including orthopaedic surgery
- Sunday surgeries at Larkmead Didcot
- Regular Cat only Clinics at our Sutton Courtenay and Benson practices
- Personal emergency cover by Larkmead Vets, 24 hours a day, 365 days a year

xl vets

CHOLSEY & BENSON 01491 651379
DIDCOT & SUTTON COURTENAY 01235 814991
HORSES & FARM ANIMALS 01491 651479

www.larkmead.co.uk



Oxfordshire Historic Churches Trust

(Registered Charity No 235644)

LOOKING FORWARD TO RIDE+STRIDE: 2016

The date to remember is Saturday

10th September.

Ride + Stride is a **FUN**draising day out!

Last year we welcomed walkers, cyclists, families & even two tractors to the Abbey!



Ride+Stride is an annual sponsored event to raise money for the Abbey & Oxford Historic Churches Trust

Would YOU like to Ride or Stride for the Abbey and OHCT?
Do you know someone else who would like to join in?

Further information will be available later on this month, including a list of participating churches, sponsorship forms and instructions for taking part.

For further information, please contact me:
Rosemary Byrde, on rosemarybyrde@btinternet.com

Free compost giveaway!

Come and join us to fill your box, bag, or container with top-quality compost for free – and don't forget your shovel!

Saturday 9 April 9.00am – 11.00am

Rye Farm car park, Culham Road, Abingdon OX14 3NN

Sunday 10 April 9.00am – 11.00am

Old South Oxfordshire District Council car park,
Benson Lane, Crowmarsh Gifford OX10 8ED



Free recycling goodies



Pick up kitchen caddies and liners



50% off compost bins, now only £10 (cash)

All while stocks last





Wallingford Historical Society

'Coronation Street: William the Conqueror and Wallingford 1066'

Wednesday 13 April

Katharine Keats-Rohan returns to The Wallingford Historical and Archaeological Society (TWHAS) with a talk describing the strong connections of William the Conqueror with Wallingford.

2016 is the anniversary of the two eleventh-century conquests of England, the Danish Cnut's accession in 1016, and the Norman Conquest of 1066. This talk is designed to complement this year's exhibition in Wallingford Museum, and Katharine will look at Wallingford in the context of both events, with particular focus on the important role played by the town in December 1066, leading to the coronation of William the Conqueror on Christmas Day.

This talk will be at **7.45 for 8pm, at St Mary's Church, Wallingford**. Please note that TWHAS talks are now being held on the second Wednesday of each month at St. Mary's Church, Wallingford.

Visitors (£4) are most welcome.
www.twahas.org.uk

Wallingford Country Market

Regal Centre every Friday, 8.30 – 11.15 am

To celebrate the Queen's 90th birthday - come and visit us on **Friday, 15 April** when a free raffle ticket will be given to each customer visiting the market with the opportunity to win 'a birthday basket fit for a queen, (containing a selection of market goodies), 2nd /3rd prizes, £15 and £10 Market Gift Vouchers. Draw will take place at 11 am.

All our usual home-baked, home-grown, home-crafted items on sale, as well as honey, preserves and eggs. We look forward to seeing you!

All enquiries to Market Manager Tel: **01865 890649** or, better still, do visit us one Friday morning. You may be surprised at what you will find!

Wallingford Gardening Club

Plants, Borders and Gardens

At the April meeting of the Wallingford Gardening Club, Timothy Walker will talk about '**Plants, Borders and Gardens**'. This is the Club's prestigious annual 'Bill Baker Memorial Lecture'.

Timothy has been the Director of the University of Oxford Botanic Garden and Harcourt Arboretum since 1988. He studied botany at University College Oxford, and became a trainee gardener at the Oxford Botanic Garden, then at the Savill Garden in Windsor Great Park, and Kew Gardens, and has won four gold medals at the Chelsea Flower Show.

Timothy presents a very personal view of modern English gardening and gardens. He looks at plants from all over the world and some ways of putting plants together to create borders finishing with what makes plants & borders into a garden.

The talk will be held at Ridgeway Community Church, Wallingford at 7.30pm on **Thursday 14 April**.

Thurs 12 May – *South African Plants in the Wild and in your Garden*: (Sue Bedwell)

Sat 14 May - Wallingford Gardening Club's Annual Plant Sale in Wallingford Market Place.
Isabelle Darby
01491 836867

What's on in Wallingford



Wallingford Museum

Historic guided walks

By popular demand on **Saturday 2 April**, two historic guided walks have been arranged, which will be led by Judy Dewey (local historian and Museum curator).

At 11am there will be a **Castle history walk**, followed by a **Town history walk** at 2.30pm. Each walk lasts about 2 hours, and starts at the Museum. There is a charge of £6 for each walk, or do both walks for a bargain £10 *[unsuitable for dogs!]*

So, why not immerse yourself in the town's fascinating local history for the whole day and also visit the new '**1066: William Comes to Wallingford**', and '**300 Years of Cartoons!**' exhibitions at the Museum.

1066: William Comes to Wallingford

This year, 2016, marks two major anniversaries in English history:

- the 950th anniversary of the last successful invasion of England: the Norman Conquest of England by William the Conqueror - and the one date in English history most people know: 1066, The Battle of Hastings.
- 1000th anniversary of the Viking conquest of England by the Danish King Cnut.

Wallingford and 'Wessex', were very much part of the story of both these invasions. The Danish take-over in 1016, after fierce battles and campaigns, forms the background story to the Norman Conquest of 1066. The exhibition explains just what this was all about. Most significantly for our local history is the fact that, after the Battle of Hastings, William the Conqueror and his army eventually made their way to Wallingford and crossed over the river here.

After the Norman Conquest William ordered the building of the great royal castle at Wallingford, which became one of the most important in England. The Museum's exhibition continues with detailed glimpses into the life of the castle, using newly discovered evidence from the surviving medieval documents.

There's plenty for the children to do too at Wallingford Museum: finding the Norman spearhead, the Saxon arrowhead, the tiny medieval chess-piece and many more fascinating items from the castle. There's also a quiz - guided by 'Charterman', our own little cartoon medieval figure to find as they go round! And, of course, there are sandpits to excavate and the 'smelly-feely' drawers to explore!

And if you come early in the season, your £5 entry ticket will give you terrific value, as you'll be able to return as many times as you like for no extra cost. Children under 16 are free, when accompanied by an adult.

Just come along or contact Judy Dewey for details:
 tel. **01491 651127**
 More details at www.wallingfordmuseum.org.uk



What's On April

Cinema: Performances start at 7.30pm unless otherwise stated.

Fri 1	Speed Sisters (U)
Sun 3	Anomalisa (15)
Mon 4	Anomalisa (15)
Tues 5	Hitchcock/Truffaut (12A)
Wed 6	Giselle (12A) Live ballet from Royal Opera House at 7.15pm
Sun 17	Hail Caesar (12A)
Mon 18	Hail Caesar (12A)
Mon 25	Lucia di Lammermoor , live opera from Royal Opera House 7.15pm
Tues 26	Despite the Falling Snow (12A)
Wed 27	Despite the Falling Snow (12A)

Live

April 2: **Johnny Cash Revisited**, tribute evening to the C&W Man-in-Black legend Johnny Cash and his wife June Carter. 7.45pm

April 13-16: Sinodun Players present **two** by Jim Cartwright. Set in the convivial atmosphere of a Northern pub, two of the SPs' most experienced actors play all 14 roles from the bickering landlord and landlady to the customers they welcome to their hostelry. Characters include a lonely widower, an ageing wife with a bedridden husband, a domineering woman and meek husband, an aggressive husband and mousey wife plus a four-year old boy left behind by his forgetful dad. 7.45pm. £10

April 23: **Shakespeare on Love**. Sinodun Players invite you to celebrate The Bard's 400th anniversary, and join in a toast on the day of his birth, and death with a free glass of sparkling wine on arrival! Enjoy the theme of love that runs through Shakespeare's work with excerpts from some of his best-known plays, songs composed by Peter Orton with lyrics from Shakespeare, and readings from the sonnets. 7.45pm. £10

April 29: **Croft and Pearce Comedy Sketch Show**. Star comedy featuring local funny ladies Hannah Croft and Fiona Pearce. The duo, who took the Edinburgh Fringe by storm, now have their own comedy show on Radio 4. 8pm. £10 (seniors and under-18s £8).

Dates for diary

18 to 21 May: Sinodun Players present **Bazaar and Rummage** by Sue Townsend.

28 May: Merry Opera make a welcome return with **Around the World in 32 Arias**.

Tickets and further information, including any last minute additions to cinema programme, available from www.cornexchange.org.uk or box office (01491 825000).

Wallingford U3A

April 6. Mrs Jill Carey. 'St Helena - Jacob's Ladder and the Saints' Jill has visited us before. Her talks are wonderfully illustrated, lively and full of information about landscapes and wildlife.

May 4. Mrs. Valerie Calderbank. "Myths and Legends of the Stars"

Our Meetings are held in Crowmarsh Village Hall at 2.00pm on the first Wednesday of each month. Visitors are always made welcome,

Our programme for 2016 to 2017 is now available.

Outings:

April 14. Royal Hospital Chelsea

For more information google **u3a Wallingford** or phone Jill on **01491 835024** or Hermione on **01865 858024**. For outings phone Eileen on **01491 825156**.

If you are over 50 and no longer in full time work come and join us!

Village Bus Services				
From Dorchester (War Memorial)				
No.	To	Dep	Arrive	
114	Abingdon	07.30**	08.09	
97	Wallingford	09.07	09.19	
97	Didcot	09.36	10.16	
97	Wallingford	10.57	11.09	
97	Didcot	11.26	12.06	
97	Wallingford	12.47	12.59	
97	Didcot	13.26	14.06	
97	Shillingford	14.47	14.51	NS
97	Wallingford	14.47	14.59	SO
114	Abingdon	14.56	15.16	
114	Wallingford	16.08	16.26	NS
To Dorchester (War Memorial)				
No.	From	Dep	Arrive	
114	Wallingford	07.15**	07.30	
114	Abingdon	08.34	09.07	
97	Wallingford	09.25	09.36	
97	Didcot	10.20	10.57	
97	Wallingford	11.15	11.26	
97	Didcot	12.10	12.47	
97	Wallingford	13.15	13.26	
97	Didcot	14.10	14.47	
114	Shillingford	14.52	14.56	NS
114	Abingdon	15.38	16.08	NS

NS= Not Saturday. SO=Saturday only.

** = Mon-Fri in school term. Five minutes later Mon-Fri in school holidays
No services on Sundays or Bank Holidays.

X39 and **X40** provide half-hourly service to Oxford, Wallingford and Reading from the bypass.

All buses operated by Thames Travel: www.thames-travel.co.uk or **01491 837988**.

Times checked with Thames Travel website 14 March.

Berinsfield Community Business

GARDEN, GROUNDS & PROPERTY
MAINTENANCE FROM A LOCAL
SOCIAL ENTERPRISE

'Quality & Value By and For The Community'

01865 343715
enqs@bcomb.co.uk
www.bcomb.co.uk



INVESTOR IN PEOPLE



Logs for Sale

Martin Drew

01865 343378 or 07774 170727



ROY PASSEY BUILDERS

Interior and Exterior Builders and Decorators

Ashcroft, High Street, Benson, Wallingford, Oxon. OX10 6RP
Tel: 01491 838797 • Mob: 07860 890925

Email: roypassey@btconnect.com
www.roypasseybuilders.co.uk



Kes Furniture Specialists

Clearance • Dealers • Restorers

Mobile: 07879 522511
Workshop: 01865 340173

River Mead, 12 Oxford Road,
Dorchester on Thames, Oxford OX10 7LX
www.kesfurniture.co.uk

HOWARD CHADWICK FUNERAL SERVICE

A caring family owned and managed Funeral Service

- Dedicated Private Chapel of Rest •
- Golden Charter Pre-Paid Funeral Plans •
- Specialists in Memorial Stones and Designs •

Benson Lane, Crowmarsh Gifford
Wallingford OX10 8ED

Tel: 01491 825222

www.chadwicksfuneralservice.co.uk



BROWNING OVENS



Wood Burning Pizza Ovens

Customised design, supply and installation

browningovens.com Tel 07771 924568

DORCHESTER FIREPLACES INTERIORS

Visit our unique showroom, opposite the beautiful Dorchester Abbey in one of Oxfordshire's most picturesque villages, Dorchester on Thames.

- We offer a complete in house service from design to installation
- Our team of professional fitters are all fully qualified and HETAS registered
- Complimentary home or site visit
- Showroom open 10am to 4pm Tuesday – Saturday

Tel: 01865 341452 or E-mail
enquiries@dorchesterfireplaces.co.uk

**CLEARVIEW
STOVES**



WOODBURNING STOVES FOR THE 21ST CENTURY

Day by day

Sun 3 April	Easter 2 8.00 am Holy Communion 1662) (Revd David Haylett) 10.30am Morning Service
Sat 9 April	Spring Flower Show 2.30 to 4.00pm viewing Village Hall
Sun 10 April	Easter 3 8.00 am Holy Communion (1662) (Revd Michael Lakey) 10.30am Sung Eucharist followed by APCM Tennis Club Spring Tournament 2.00pm Recreation Ground
Tues 12 April	10.15am Short Communion
Wed 13 April	Parish Council Meeting 7.30pm Village Hall
Thurs 14 April	WI 2.30pm Village Hall Lynn Boreham 'The Alexander Technique' Mobile library 2.55-3.15 Opposite War Memorial
Sun 17 April	Easter 4 8.00 am Holy Communion (1662) (Revd Michael Lakey) 10.30am Family Service 6.00pm Evensong
Wed 20 April	Culham Horticultural Society 'Less well known trees and shrubs suited to the smaller Garden' Kevin Hughes 7.30pm Abbey Guest House



Thurs 21 April	Cranford House School Founder's Day Service 11am Dorchester Abbey Classic Car Show, George Hotel 1.00-4.00pm Official Opening of Overy Mead Piece 2.30 pm by Graham Scholey, Chiropodist Belcher Court (see px)
Sun 24 April	Easter 5 8.00 am Holy Communion (1662) (Revd Sue Booyes) 10.30am Sung Eucharist 1pm Scouts' Service St George's Day Parade High Street 2.15pm 7pm Taize@7
Wed 27 April	DoT Historical Society 'Co-operative Societies in Oxfordshire from 1853 to the present day' Anne Ransome 7.30pm Village Hall (Back room)
Thurs 28 April	Service at the Cheshire Home 11.30am Mobile library 2.55-3.15 Opposite War Memorial
Fri 29 April	May Dancing St Birinus School 1.15pm
Sat 30 April	Eucharist for Cuddesdon group 4.30pm

Church services in the Abbey appear in red.
More details can be found at :
www.dorchester-abbey.org.uk

For details of services at St Birinus RC
Church go to:
www.stbirinus.co.uk

Weekly events

Monday	Watercolour Painting 10.00am-12.30pm and 1.30 pm-4.00pm Abbey Guest House. Full details from www.rebeccahind.com
Tuesday	Coffee in the Abbey 10.30-12.00 Bellringing Practice 7.30 pm Abbey (Not Holy Week) Fishmonger 10.10 to 10.20am by War Memorial (p.15)
Wednesday	Holy Communion at Berinsfield Church 9.30am Lunch Club Village Hall 12.30
Thursday	Baby & Toddler Group 9.30am – 11.00am Village Hall: (term time only)
Friday	Choir Practice 7.00 pm Abbey

Regular events also appear in the Parish
Council's website:
www.dorchesteronthames.co.uk

Parish Registers

Funeral

25 Feb	Roy Hampton
7 March	Betty Madden

Funeral at crematorium

16 Feb	Peter Alan McCarthy
4 March	Bryan Malcolm Coy

Wedding

27 Feb	Neil Williams and Amanda Groom
--------	-----------------------------------

Baptism

21 Feb	Elden Joe Geddes
--------	------------------

If you would like your village meeting or
event to appear in Dorchester Diary,
send details to the editor by the copy
date given on p2.

Daffodils at the north end of the High Street in March

Useful Information

CONTACTING THE POLICE

To report a non-emergency crime, or to give information to Thames Valley Police, call **101**. Alternatively, call Crimestoppers anonymously on **0800 555111**. In the event of an emergency dial **999**.

.....

HEALTH SERVICES DIRECT LINE TO URGENT LOCAL HEALTH SERVICES

Dial **111** to access urgent local NHS health care services. Where possible, they will book you an appointment or transfer you to the people you need to speak to or send an ambulance if they think you need one. For non-urgent health needs you should contact your GP in the usual way.

MINOR INJURIES

The Minor Injuries Unit at Abingdon Hospital, Marcham Road, daily from 10.00 am to 10.30 pm: **01865 903476**.

A&E

The nearest A&E units are at the John Radcliffe Hospital in Oxford (**01865 741166**) and the Royal Berkshire in Reading (**01183 225111**)

SURGERIES

Berinsfield Health Centre: **01865 340558**
Clifton Hampden: **01865 407888**
Millstream Benson: **01491 838286**

.....

ROOM HIRE

ABBEY GUEST HOUSE BOOKINGS

To hire the Abbey Guest House for private functions, meetings, exhibitions, etc, contact Hilarie Rogers on **01865 340007**.

HIRE OF DORCHESTER VILLAGE HALL

To hire our Village Hall, contact Brenda Edwards; edwards.dorchester2@virgin.net or telephone **01865 343062**. Please telephone at least 24 hours in advance to arrange collection of the key.

THE COMMUNAL LOUNGE AT BELCHER COURT

The communal lounge at Belcher Court is available for rent. Contact the Scheme Manager, Caroline Major, on **01865 343128**.

.....

FAULTS AND COMPLAINTS STREET LIGHTING

Report any problems with a street light to **0800 317802**, available 24 hours a day. Callers will be asked for the address of the site and the nature of the fault.

HIGHWAYS AND FOOTPATHS

Ring Oxfordshire Highways on **0845 3101111**, available five days a week, with a 24-hour answering facility. Complaints can also be sent via e-mail to southernarea@oxfordshire.gov.uk.

BLOCKED DRAINS

Ring Thames Water for blocked drains on **0800 316 9800**. Callers will be asked for the postcode of the address where the drains are blocked.

REFUSE COLLECTION

If your rubbish is not collected on the due date contact the contractor direct. Call **03000 610610** and the website: www.more recycling.co.uk

BERINSFIELD LIBRARY

Green Furlong, Berinsfield **01865 340771**
Free Internet access. DVDs can be ordered.

OPENING HOURS

Mon - closed
Tues, Wed, Fri 10.00am - 12.30pm
Tues 2.00-7.00pm
Weds, Thurs 2.00-5.30pm
Fri 2.00-5.00pm
Sat 10.00am - 12.30pm

.....

TRANSPORT

BUS SERVICES

Information about bus services, both local and national, is available from www.traveline.info, and **0871 200 2233**, which also provides information about trains, London Underground and Overground and ferries throughout the UK.

OXFORDSHIRE DIAL-A-RIDE

Door to door minibus service for shopping trips. For information please contact **0845 310 1111**.

SHOPMOBILITY

Free loan of wheelchairs and electric scooters to people who need them for shopping in Oxford. For information please ring **01865 248737**.

.....

CONTACTING THE PARISH COUNCIL

The Parish Clerk is Geoffrey Russell of The Pigeons (next to The Fleur de Lys), High Street, Dorchester on Thames OX10 7HH; **01865 340759** (during normal office hours, please, unless an emergency); parishclerk@dorchesteronthames.co.uk.

More information about the village is available at: www.dorchesteronthames.co.uk

.....

USEFUL CONTACTS

ANGLICAN PRIEST

Dorchester Rectory
Revd. Canon Sue Booy
01865 340007

EDUCATION OFFICER

Margaret Craig
01865 343164
education@dorchester-abbey.org.uk

ABBEY E-MAIL:

admin@dorchester-abbey.org.uk
Contact details for Church Wardens and other Abbey information are on the notice board in the Abbey.

ABBEY WEBSITE

www.dorchester-abbey.org.uk

VILLAGE WEBSITE

www.dorchesteronthames.co.uk

ROMAN CATHOLIC PRIEST

The Presbytery
Fr. John Osman
Bridge End
01865 340417
www.stbirinus.co.uk



REFUSE COLLECTIONS

Sat 2 April	Green
Fri 8 April	Black
Fri 15 April	Green
Fri 23 April	Black

Fridays from 7.00 am.
Saturdays from 6.00am

Weekly: food waste (in bio-degradable starch-based bag or wrapped in newspaper, in green caddy).

The recycling centre at Oakley Wood (off the A4130) is open 8.00am - 5.00pm seven days a week.

Index of advertisers

	Page
AKT Planning	16
Altom tree care	21
Anderson Orr	9
Arborcare	14
Beauty Essentials	6
Bell Motors	21
Berinsfield Community Business	33
Brannfords	16
Browning Ovens	33
Bryan's Locks	16
Clive the Handyman	13
CP Groundworks	9
Dorchester Fireplaces	33
Finders Keepers	20
Four Winds	12
Full Circle	6
George Hotel	12
Graceful Gardens	9
Howard Chadwick funerals	33
In House	28
JEM chimney sweep	25
Jemini	16
Jenks	4
Kes furniture	33
Larkmead vets	30
LB Plumbing	21
Marcus Maunder	16
Martin Drew Logs	33
Massage Matters	4
Millstream Pilates	21
Oxford Sports Physio	14
Paul the Builder	30
Pipeline Direct	16
Ringrose	25
Roy Passey Builders	33
St Mary's Dental	21
Steve Wilkinson	21
T W Hayden	25
Victoria Dyde	21
Village Mechanic	25
White Hart	4
Winterbrook nursing home	25

DADS

Dorchester Amateur Dramatic Society

"ALL EXCLUSIVE"

A Comedy By Hugh Morrison

Dorchester Village Hall

18th - 21st May 2016

7.45 pm



Tickets

Wed £8.00

Thurs, Fri, Sat £10.00

www.dads.org.uk

Web:- www.ticketsource.co.uk/dads (booking fee applies)

Email:- tickets@dads.org.uk

Phone 01865 340792

By arrangement with Lazy Bee Scripts

Artwork by Simon

Available from
Co-op & Lily's, Dorchester
Aisha Stores, Warborough
Derry's Den, Benson